



# FAN GUIDE

## SSC NAPOLI - AC MILAN



**STADIO DIEGO ARMANDO MARADONA**

**06/04/2026 - 20:45**



# INDEX

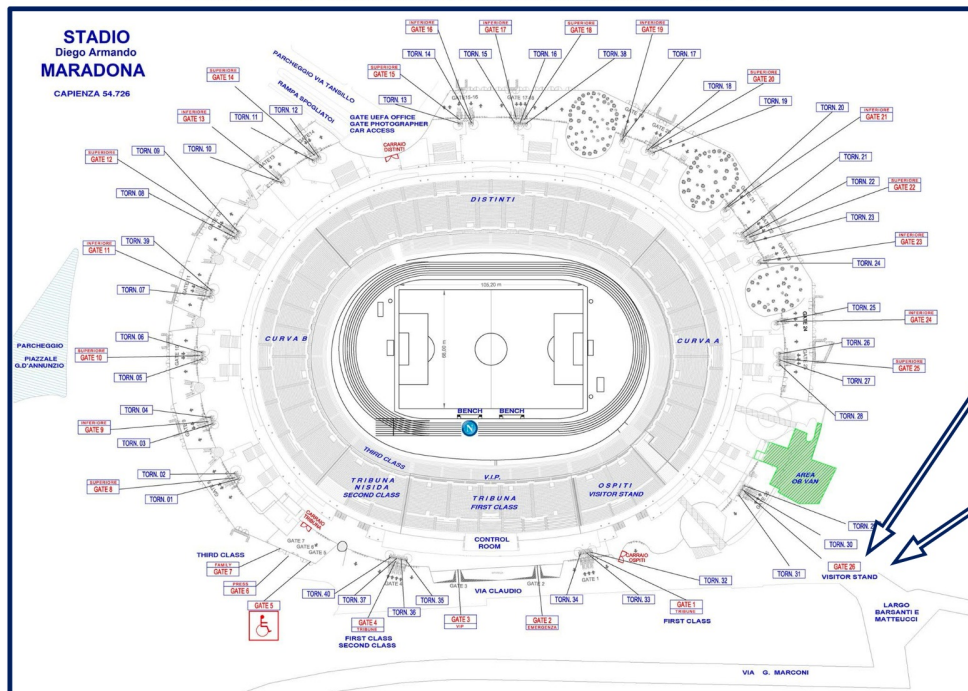
---

<b>STADIUM.....</b>	<b>3</b>
<b>AWAY SECTOR.....</b>	<b>4</b>
<b>HOW TO GET TO THE STADIUM.....</b>	<b>5</b>
<b>PARKING.....</b>	<b>6</b>
<b>STADIUM REGULATION.....</b>	<b>7</b>
<b>HOME TEAM.....</b>	<b>8</b>
<b>USEFULL INFORMATION.....</b>	<b>9</b>
<b>SLO AC MILAN.....</b>	<b>10</b>



# STADIUM

## STADIO DIEGO ARMANDO MARADONA - MAPPA



**TIFOSI OSPITI CON  
DISABILITÀ  
GATE 26**

**SETTORE OSPITI  
GATE 26**

**INAUGURATIONS:** 1959

**ADDRESS:** Via Jacopo de Gennaro, 80125, Napoli

**COVERING:** All seats

**PITCH DIMENSIONS:** 105 x 68

**CAPACITY:** 54 726

**GATES OPENING:** 2 hours before, unless otherwise GOS directions

**RISTRUTTURAZIONE:** 1990



# AWAY SECTOR

---



**GATE:** Largo Barsanti e Matteucci

**AWAY SECTOR:** Gate 26

**GATES OPENING:** 18:30 AM, unless otherwise GOS directions

**CAPACITY:** 2482

**HOLD BACK:** 40 minutes



# HOW TO GET TO THE STADIUM

---

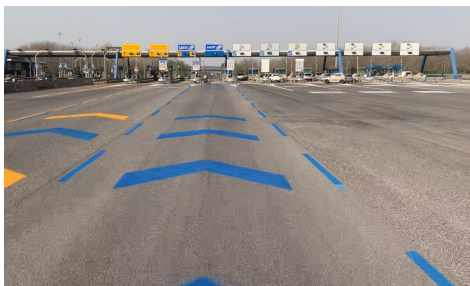


## AIRPLANE

From Naples Airport, take the Alibus towards the city center, with main stops at the Central Station (Piazza Garibaldi) and the port (Molo Beverello), departing near the exit of the Arrivals Terminal. Then, from the Central Station, take Metro Line 1 towards Piscinola and get off at one of the convenient stops such as Piazza Municipio or Toledo. From there, follow the directions to the stadium (Stadio Diego Armando Maradona).

## TRAIN

Arriving at Naples Central Station (about 6 km from Stadio Diego Armando Maradona). Take Metro Line 1 towards Piscinola and get off at a convenient stop such as Toledo or Municipio, then follow the signs to Fuorigrotta and the stadium (Stadio Diego Armando Maradona), possibly continuing by bus or the Cumana railway.



## HIGHWAY

Arriving from Milan, Florence, or Bologna (A1 motorway).

Continue towards Naples, then take the Naples Ring Road (A56) and exit at Agnano, then continue along Via Terracina. Follow the signs to the stadium (Stadio Diego Armando Maradona). Parking (for cars, buses, and minivans) is available on Viale Marconi.

---



# PARKING



A parking area will be arranged for the visiting fans arriving in Naples on Via Marconi.

The drop-off and pick-up area for visiting fans will be located at Largo Barsanti e Matteucci.



# STADIUM REGULATIONS

---



[CLICK HERE TO ACCESS THE STADIUM RULES OF USE](#)



# USEFUL INFORMATION

---

**EMERGENCY NUMBER:** 112

**RADIO TAXI:** 8888 / 081 0101

**TICKET PRICE:** €50

**AWAY SECTOR COVERAGE:** yes

**GATES OPENING:** 2 hours before, unless otherwise GOS directions

**HOLD BACK:** 40 minutes

**LAST GUIDE UPDATE:** Tuesday, 31 march 2026 h 12:00 AM



# SLO AC MILAN

---



<b>E-MAIL</b>	<a href="mailto:slo@acmilan.com">slo@acmilan.com</a>
<b>WHATSAPP</b>	+39 338 627 5753
<b>ON-SITE CONTACT</b>	Riccardo Savio

**WE'RE WAITING FOR YOU!**

Monday 6 april 2026  
h 20:45 AM

**FORZA MILAN!**