

Join our co-design workshop

Would you like to help shape the future of your neighbourhood?

SNG (Sovereign Network Group) owns a number of properties in the Westfield area of Harwell, and as part of our commitment to improving homes, public spaces, and community wellbeing, we're exploring the potential for future redevelopment.

We're inviting all local residents - whether you're an SNG customer, homeowner or privately rent - to join our co-design sessions and work with us to co-create positive changes in your neighbourhood.

What we will be looking at:

- **Public spaces:** making green spaces, walkways and shared outdoor spaces more welcoming, safer for all and well-used
- **Connectivity:** improving how we move around our neighbourhood and access local services, such as the primary school
- **Sustainability and biodiversity:** ensuring any improvements support a greener, healthier community; and
- **Housing:** exploring how homes can be made more sustainable and what type and where new homes could go.

What is co-design?

Co-design enables local people to have a real voice in developing ideas for the future of your community alongside the design team. You will contribute your ideas and insights, making sure that proposed changes reflect community needs and aspirations. You don't need specialist knowledge - just enthusiasm and a passion for the area.

Our aims

- Create a safer, more connected community by working together on solutions to local challenges, using local knowledge and experience.
- Shape spaces and homes that are better designed, more sustainable, and affordable to run for future generations.

How to get involved



The workshop will be on:

Monday 18 May 2026

5pm to 7pm

Harwell Village Hall, Cherry Hall

All are welcome, including children.

To let us know you are coming, please scan the QR code below, email us on info@westfield-harwell.co.uk or call us on **0800 772 0475**.



We look forward to hearing from you.

What's happened so far?

We're exploring how we can improve homes, public spaces and community wellbeing in the Westfield area of Harwell. Since November 2025, we've spoken with many residents, held three events and collected ideas and feedback. We've also carried out technical surveys to better understand the condition of the homes and surrounding area.

Please visit our website to view the information boards shared at the event on 19 March 2026 which provide an overview on why redevelopment is being explored, what this could mean for you and how we will support you through any proposed changes.



www.sng.org.uk/westfield-harwell

Decisions involving homes and land can take time, and we want to make sure people are supported early as we progress redevelopment options. During this period, there will be opportunities for community engagement, and any changes would take place in phases over time, meaning nothing would happen suddenly. We will continue to keep you informed and updated throughout the process.

What's happening next

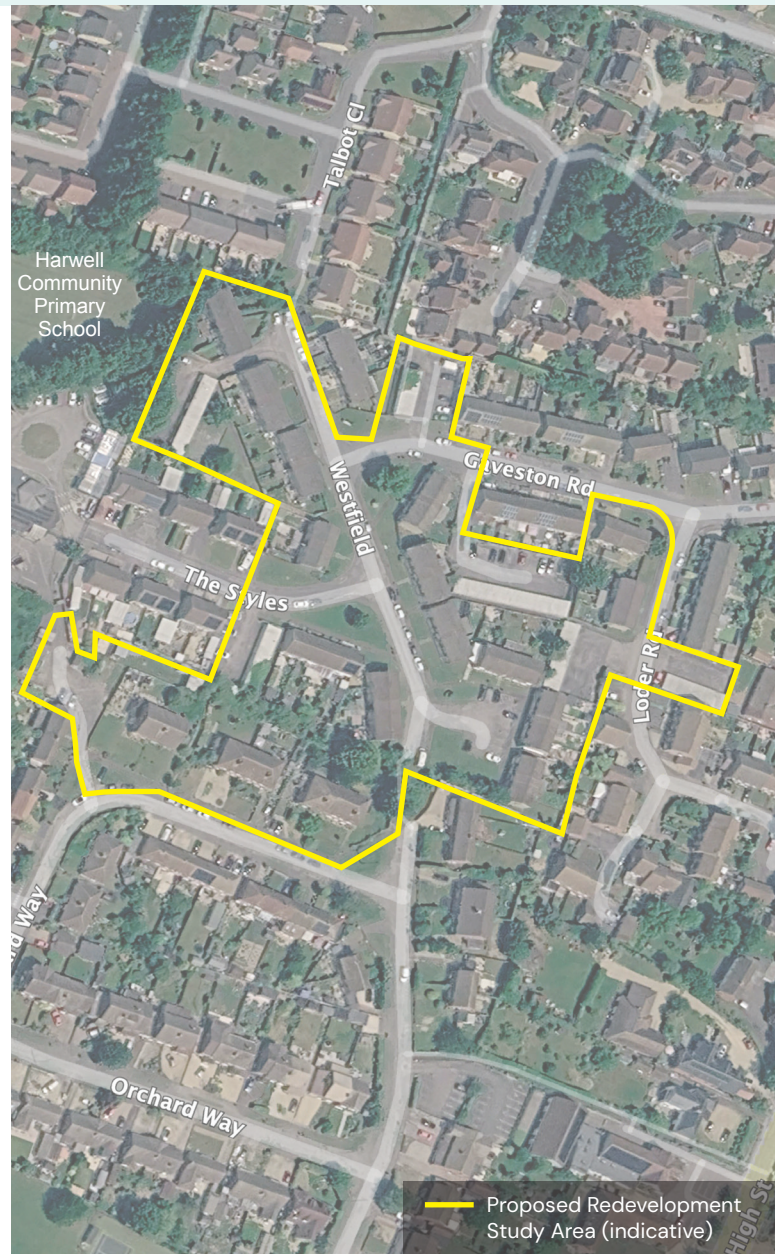
We're still at a very early stage and no decisions have been made.

However, we understand it would be helpful to share an indicative timeline should development go ahead.

We anticipate the programme could look like this:

- **Spring 2026**
First co-design workshop
- **Summer 2026**
Second co-design workshop
- **Autumn 2026**
Public consultation events
- **Winter 2026**
Submission of planning application to Vale of White Horse Council
- **2029**
Earliest anticipated start on site.

The timeline above is indicative and subject to change. We'll be able to share a more detailed programme as the proposals develop, including at the public consultation later this year.



— Proposed Redevelopment Study Area (indicative)

Please get in touch with us if you have any queries:

info@westfield-harwell.co.uk | 0800 772 0475 | www.sng.org.uk/westfield-harwell