

## 660SJ TELESCOPIC BOOM LIFTS

### Platform

- 0.91 m x 1.83 m low mount platform
- Side entry with drop bar mid rail
- Multiple function operation
- Full proportional drive joystick control with integral thumb steer switch
- Full proportional main boom and swing joystick control
- Multiple speed control for telescope and platform rotate
- Selectable creep speed on drive / lift and swing functions
- 1.83 m articulating jib
- 180 degree powered platform rotator
- Platform console machine status light panel <sup>1</sup>
- Load sensing system
- AC cable to platform

### Power & Transmission

- Deutz D2011-L03 (36.4 kW) diesel engine
- Engine distress warning/shut down system <sup>2</sup>
- Gull-wing hoods
- Swing-out engine tray
- Spark arresting type muffler
- Control ADE® - Advanced Design Electronics System
- Hydrostatic drive transmission
- Horn

### Functional Equipment & Accessories

- 3 degree tilt alarm and indicator light
- 39 x 15-22.5 foam filled lug tread tyres
- Lifting/tie down lugs
- Hour meter
- Ground control selector switch with key lock
- Platform tool tray
- 12V DC auxiliary power

### Available Options

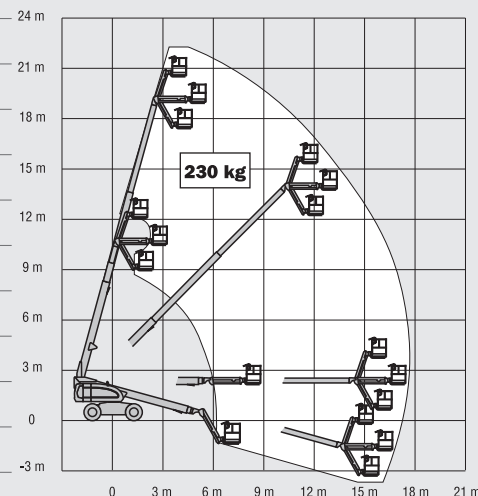
- 0.91 m x 2.44 m low mount platform
- Side entry with inward swing gate
- 13 mm air line to platform
- Four wheel drive
- Four Wheel Steer/Two Wheel Steer/Crab Steer
- 15 x 19.5 foam filled non marking tyres
- Oscillating front axle
- On-board 4,000 W generator
- SkyPower® package 7,500 watt on-board generator
- SkyWelder® package 250 amp welder in the platform <sup>3</sup>
- Nite-Bright® package <sup>4</sup>
- Tow Package <sup>5</sup>
- All motion alarm
- Alarm package <sup>6</sup>
- Light package <sup>7</sup>
- Head and tail lights
- Flashing amber beacon
- Plugs & Sockets
- Hostile environment package <sup>8</sup>
- Hydraulic oil cooler
- Catalytic Purifier Muffler
- Soft Touch Proximity System
- Corner storage tray



<sup>1</sup> Provides indicator lights at platform control console for system distress, low fuel, tilt light, and foot switch status.  
<sup>2</sup> Low oil pressure and high coolant temperature alarms with shut-down enabled/disabled by analyser.  
<sup>3</sup> Available when integrated with the SkyPower® package.  
<sup>4</sup> Consists of six 40-watt lights, four turntable mounted lights and two platform mounted lights.  
<sup>5</sup> Available only with two wheel drive on models 600S and 660SJ.  
<sup>6</sup> Includes all-motion alarm and flashing amber beacon.  
<sup>7</sup> Includes platform mounted work lights and head & tail lights.  
<sup>8</sup> Includes console cover, boom wipers and cylinder bellows.

# 660SJ TELESCOPIC BOOM LIFTS

Platform Height	20.31 m
Horizontal Outreach	17.30 m
Swing (Continuous)	360°
Platform Capacity – Unrestricted	230 kg
Platform Rotator (Hydraulic)	180°
Jib – Overall Length	1.83 m
Jib - Range of articulation	130° (+70°/-60°)
A. Platform Size	0.91 m x 1.83 m
B. Overall Width	2.49 m
C. Tailswing (working condition)	1.14 m
D. Stowed Height	2.57 m
E. Overall Length	10.88 m
F. Stowed Length	10.21 m
G. Wheelbase	2.48 m
H. Ground Clearance	0.30 m
Machine weight <sup>1</sup>	13,150 kg
Maximum Ground Bearing Pressure	5.27 kg/cm <sup>2</sup>
Maximum Tyre Load	6,455 kg
Drive Speed 2WD	6.8 km/h
Drive Speed 4WD	6.8 km/h
Gradeability 2WD	30%
Gradeability 4WD	45%
Tyres	39 x 15-22.5 Foam Filled
Axle Oscillation (optional)	0.20 m
Turning Radius – Inside 2WS	2.23 m
Turning Radius – Inside 4WS	1.40 m
Turning Radius – Outside 2WS	5.36 m
Turning Radius – Outside 4WS	2.89 m
Diesel Engine Deutz D2011L03	36.4 kW
Fuel Tank Capacity	151 L
Hydraulic System	151 L
Auxiliary Power	12V DC

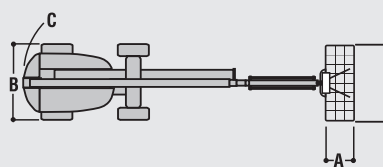
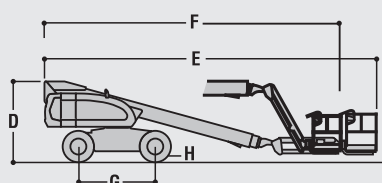


**JLG Industries, Inc. is a leading designer and manufacturer of access equipment and complementary services and attachments.**

JLG has manufacturing facilities in the United States, France, Romania, China and Belgium. Customers throughout Europe, Scandinavia, Africa and the Middle East benefit from a network of dedicated sales and service operations designed to deliver the highest levels of support.

JLG is an Oshkosh Corporation company.

[www.jlgeurope.com](http://www.jlgeurope.com)



<sup>1</sup> Certain options or country standards may increase weight and/or dimensions.