



BRACHOT

**Landscape &
Surface Materials**

**OUTDOOR
CERAMICS**



uniceramica



uniceramica

A renewed and extensive range of tiles

Outdoor ceramic tiles have become extremely popular, which has inspired Brachot to expand its range even further. From now on, you will find our well-known OCS (Outdoor Ceramics) range in the Uniceramica brand, which has been complemented for the occasion with new designs and corresponding finishes. This will allow you to shape your outdoor environment in the style you like, from sleek minimalism to rural charm. The designs are divided into five collections: Naturals, Tea-time, Cemento, Bluestone and Legno.



Cemento Light (OCS)
cemento collection

UNIQUE CHARACTERISTICS



Rectified

Thanks to their straight cut, equal sides and corners, the tiles can be installed quickly to create a sleek effect with minimal joints.



Frost resistant

Our full-body ceramic tiles are resistant to changes in temperature and humidity. What is more, they are 100% frost resistant.



Anti-slip

All the tiles have a minimum anti-slip value of R11, which is excellent for outdoor use. The anti-slip surface also keeps its value over time.

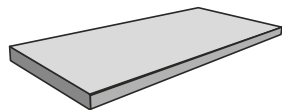


Paving supports

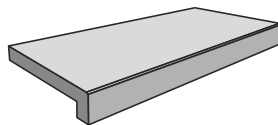
With their nearly perfect calibration, our light and easy-to-install ceramic tiles are particularly suitable for installation on paving supports.

The high-quality designs are available in two types of pool copings. This for a harmonious ensemble around your pool and fully in line with the design of your garden.

Type 1 is the traditional coping with straight edge. Type 3 has an overhanging edge, giving it a sleeker look. Both types are available in the popular materials from the Uniceramica range.



POOL COPINGS type 1
with straight bevelled edge.



POOL COPINGS type 3
with straight overhanging edge.



 **Almond Beige (OCS)**
tea-time collection



Bluestone Light Grey (OCS)
bluestone collection

Bluestone collection



Belgian Black



Belgian Blue



Belgian Blue Dark



Belgian Blue Dark Grey



Belgian Blue Grey



Bluestone Light Grey (OCS)

Cemento collection



Cemento Light (OCS)



Concrete Beige



Concrete Dark



Concrete Grey

Legno collection



Legno Miele



Legno Silver



Legno Silver
legno collection

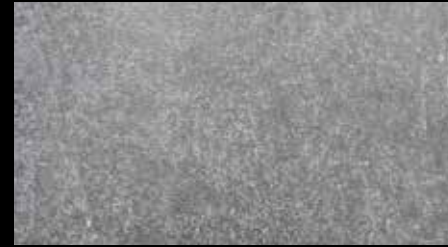
Naturals collection



Travertine Silver



Romano Grigio



Slate Anthracite



Quartz Grey



Pietra Arena Grigio



Black Basalt



Quarzo Grigio Scuro



Basaltino (OCS)



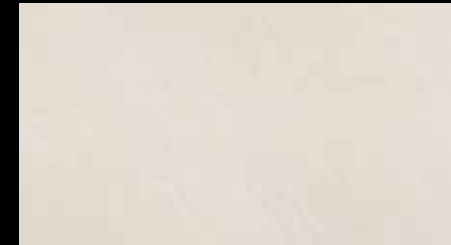
Basalt Grey



Quarzo Grigio Chiaro



Basaltino Nero



Pietra Arena Avorio



Pepper Grey



Pepper Dark (OCS)



Travertine Beige



Travertino (OCS)

Naturals collection
continued



Pietra Grey Antico



Romano Beige



Pietra Beige Antico



Pietra Arena Beige



Pepper Dark (OCS)
naturals collection

Tea-time collection



Almond Beige (OCS)



Anthracite Cream



Ceppo Grey



Biscuit Beige (OCS)



Biscuit Dark (OCS)



Ivory Cream



Biscuit Grey (OCS)



Cappuccino Beige (OCS)



Silver Cream



 **Ceppo Grey**
tea-time collection

		19x19	60x60	90x60	120x30	120x60	pc type 1	pc type 3
Bluestone collection	Belgian Black		◆				◆	◆
	Belgian Blue		◆				◆	◆
	Belgian Blue Dark		◆				◆	◆
	Belgian Blue Dark Grey		◆				◆	◆
	Belgian Blue Grey	◆	◆				◆	◆
	Bluestone Light Grey (OCS)		◆	◆		◆	◆	◆

Cemento collection	Cemento Light (OCS)		◆				◆	◆
	Concrete Beige		◆				◆	◆
	Concrete Dark		◆				◆	◆
	Concrete Grey		◆				◆	◆

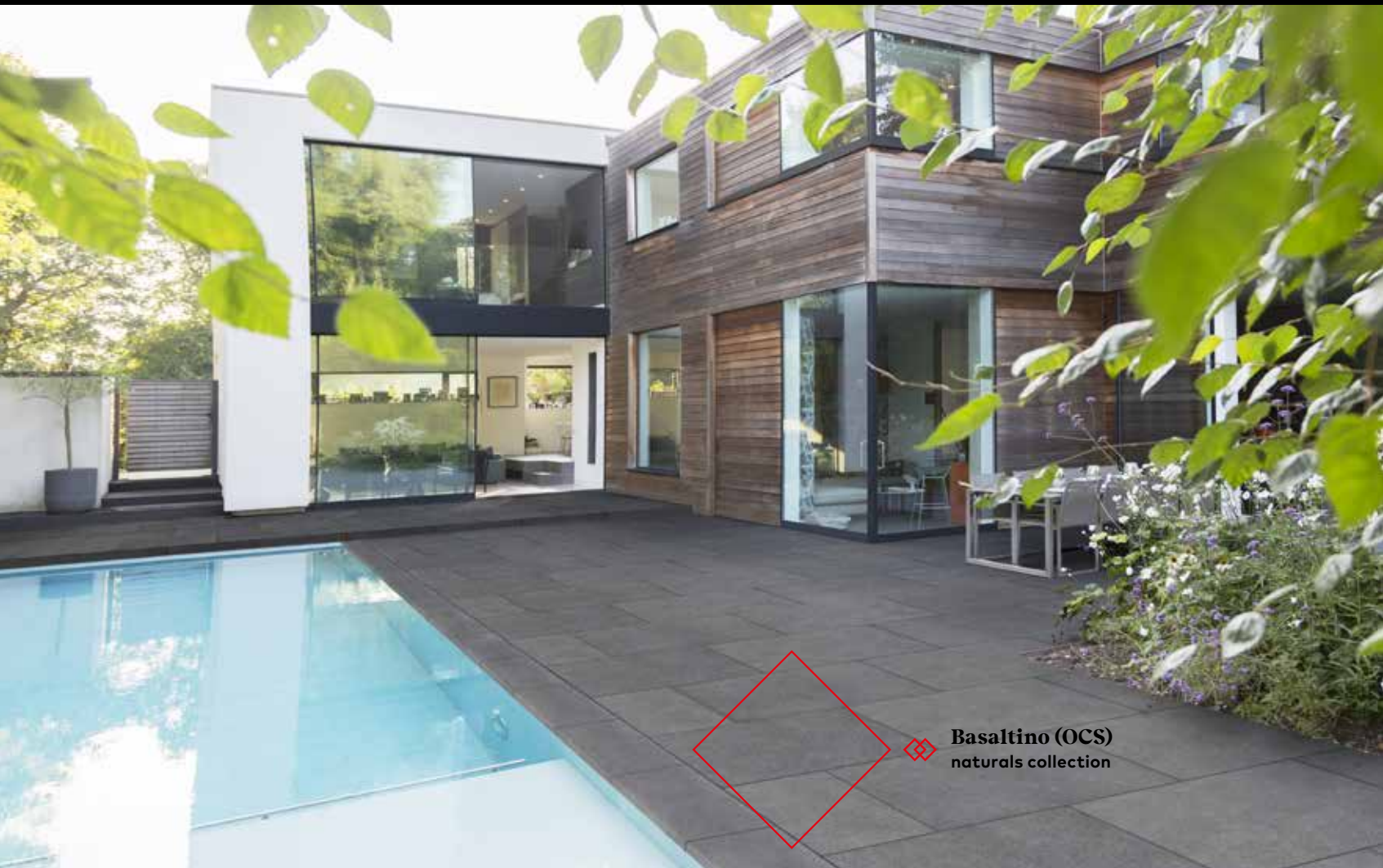
Tea-time collection	Almond Beige (OCS)		◆	◆			◆	◆
	Anthracite Cream		◆				◆	◆
	Biscuit Beige (OCS)		◆	◆			◆	◆
	Biscuit Dark (OCS)		◆				◆	◆
	Biscuit Grey (OCS)		◆	◆			◆	◆
	Cappuccino Beige (OCS)		◆				◆	◆
	Ceppo Grey		◆				◆	◆
	Ivory Cream		◆				◆	◆
	Silver Cream		◆				◆	◆

Naturals collection

		19x19	60x60	90x60	120x30	120x60	pc type 1	pc type 3
Naturals collection	Basalt Grey		◆				◆	◆
	Basaltino (OCS)		◆	◆		◆	◆	◆
	Basaltino Nero		◆				◆	◆
	Black Basalt		◆				◆	◆
	Pepper Dark (OCS)		◆	◆		◆	◆	◆
	Pepper Grey		◆				◆	◆
	Pietra Arena Avorio			◆			◆	◆
	Pietra Arena Beige			◆			◆	◆
	Pietra Arena Grigio			◆			◆	◆
	Pietra Beige Antico			◆			◆	◆
	Pietra Grey Antico			◆			◆	◆
	Quartz Grey		◆				◆	◆
	Quarzo Grigio Chiaro			◆			◆	◆
	Quarzo Grigio Scuro			◆			◆	◆
	Romano Beige			◆			◆	◆
	Romano Grigio			◆			◆	◆
Slate Anthracite		◆				◆	◆	
Travertine Beige		◆				◆	◆	
Travertine Silver		◆				◆	◆	
Travertino (OCS)		◆	◆			◆	◆	

Legno collection

Legno collection	Legno Miele				◆		◆	◆
	Legno Silver				◆		◆	◆



Basaltino (OCS)
naturals collection

DIMENSIONAL CHARACTERISTICS

Uniceramica Outdoor Ceramics tiles are rectified, thanks to which following dimensional characteristics can be guaranteed (according to standard EN ISO 10545-2 and conform to requirements from EN ISO 14411):

Length/Width	+/- 2 mm (CONFORM EN ISO 14411)
Thickness	+/- 0,5 mm (CONFORM EN ISO 14411)
Rectangularity	+/- 2 mm (CONFORM EN ISO 14411)
Surface flatness	+/- 2 mm (CONFORM EN ISO 14411)

TECHNICAL SPECIFICATIONS

PROPERTY	STANDARD	AVERAGE VALUE
Water absorption	EN ISO 10545-3	< 0,2 %
Breaking strength	EN ISO 10545-4	> 9500 N
Flexural strength (MOR)	EN ISO 10545-4	> 40 N/mm ²
Abrasion resistance	EN ISO 10545-6	< 145 mm ³
Frost resistance	EN ISO 10545-12	Frost-resistant
Slip resistance	DIN 51130	R11
Stain resistance	EN ISO 10545-14	class 4 - easy to clean

CRAFTING VALUE FOR FUTURE GENERATIONS

www.brachot.com

Brachot extracts, produces and distributes landscape and surface materials in natural stone and blended materials. With its 20 quarries, 7 production sites and 15 distribution centres across Europe and Africa, Brachot has the entire production process in its own hands: from extraction to sawing and processing to distribution. This creates endless possibilities for the production of blocks, slabs, tiles and accessories for indoor and outdoor applications in natural stone and blended materials.

Brachot and its Family Members are firmly united by their focus on innovation. They continuously come up with new possibilities and applications, both in production and distribution. State-of-the-art machines and techniques enable Brachot to work faster and to ensure higher quality and greater sustainability. As a result, Brachot has become an internationally leading name in the world of natural stone and blended materials.

BRACHOT ERDINGTON

Wood Lane, Erdington
Birmingham B24 9QJ
+44 121 382 8778
info.erdington@brachot.com

BRACHOT CZAPLE

ul. Czaple 23A
80-298 Gdańsk
+48 666 876 716
info.czaple@brachot.com

BRACHOT DEINZE SLABS

E3-laan 86
9800 Deinze
+32 9 381 81 81
info.deinze@brachot.com

BRACHOT HALESOWEN

Unit 1 Brook Park, Saltbrook Road
Halesowen B63 2QU
+44 138 456 4315
info.halesowen@brachot.com

BRACHOT SWARZEDZ-JASIN

ul. Poznanska 49
62-020 Swarzedz-Jasin (Poznan)
+48 602 55 49 43
info.swarzedz@brachot.com

BRACHOT HARELBEKE TILES

Venetijëlaan 22
8530 Harelbeke
+32 56 23 70 00
info.harelbeke@brachot.com

BRACHOT ITALY

Via Paganella, 79
37020 Dolcè (Verona), Fraz. Volargne
+39 045 683 34 44
info.italy@brachot.com

BRACHOT STRZEGOM

ul. Mostowa 1
58-150 Strzegom
+48 60 252 84 57
info.strzegom@brachot.com