

# Floorplans

# QUARTORIA

NEW BARNET

# 1, 2 & 3 bedroom Shared Ownership apartments



Indicative only. Computer Generated Image subject to change.

## Specification

### General

- Smoke and heat alarms
- Audio / video entry phone system to front entrance door
- Balcony or terrace to all apartments
- Telephone and data points for wireless broadband / TV (subject to subscription) in the living area and main bedroom
- Dulux Timeless Fast Matt emulsion finish to kitchen, lounge, hallways, and bedrooms
- Heat Interface Unit (HIU)

### Kitchen

- Contemporary light grey kitchen units with soft-close doors
- Black glass splashback
- Dark Mountain Oak worktops
- Integrated stainless steel appliances to include:
  - 1.5 bowl sink with chrome monobloc mixer tap
  - Frameless black glass touch control Indesit ceramic hob
  - Indesit oven
  - Hotpoint cooker hood
  - Indesit dishwasher
  - Indesit fridge / freezer
  - Fully integrated Indesit washer / dryer where possible, or within the cupboard

### Main Bathroom

- White bathroom suite
- Toughened glass shower screen
- Thermostatic shower mixer and shower head over bath
- Mirrored bathroom cabinets
- Future Stone white wall tiles:
  - Full height to end walls of the bath
  - Half height to the wash hand basin wall, including a tiled shelf to the boxing
- Future Stone white décor wall tiles:
  - Overlap design in a stacked bond (landscape orientation) with silver detailing
- Grey grout to the side wall of the bath

### Cloakrooms

- Cloakroom – toilet & basin to selected plots
- Future Stone white overlap décor wall tile, fixed one tile above the wash hand basin, to extend full width of basin. Silver grey grout

### Flooring

- Amtico Spacia Acoustic “Sun Bleached Oak” flooring to lounge/kitchen
- Boulevard Grey floor tiles to separate kitchens
- Future Stone white porcelain floor tiles to bathroom
- New Dublin Twist carpet in grey to bedrooms and stairs / upper floor (duplex units)

### Lighting

- Standard pendant lighting to lounge, dining area, hallways, and bedrooms
- 6W LED white downlights to kitchen and bathroom
- Surface-mounted flexible LED strip lighting to the underside of kitchen wall units

### Bedroom

- Two-panel wardrobe to the main bedroom

### Communal

- Landscaped gardens
- Cycle storage
- Refuse storage
- Car parking (off street or undercroft)

Specification correct at time of print and may change at any time - please speak to a Sales Executive for confirmation.

# Site plan

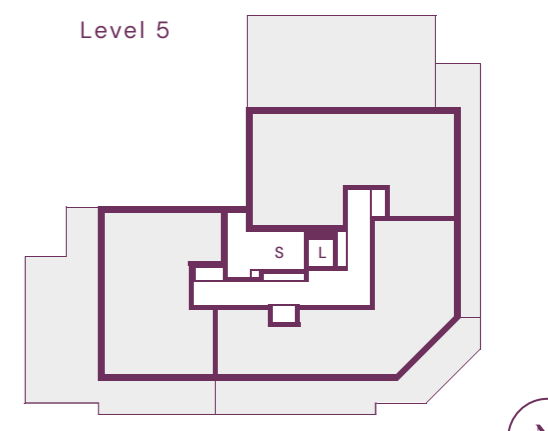
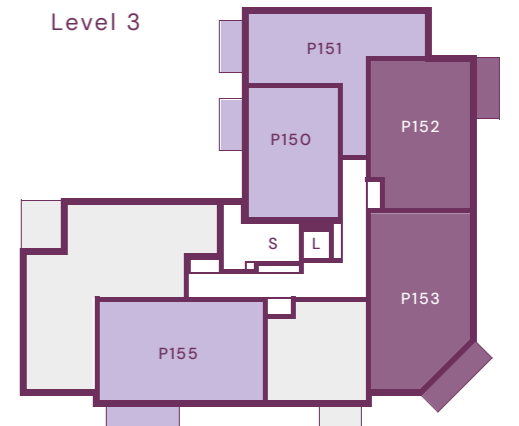
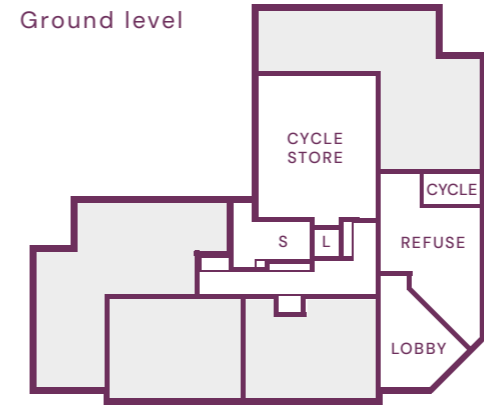




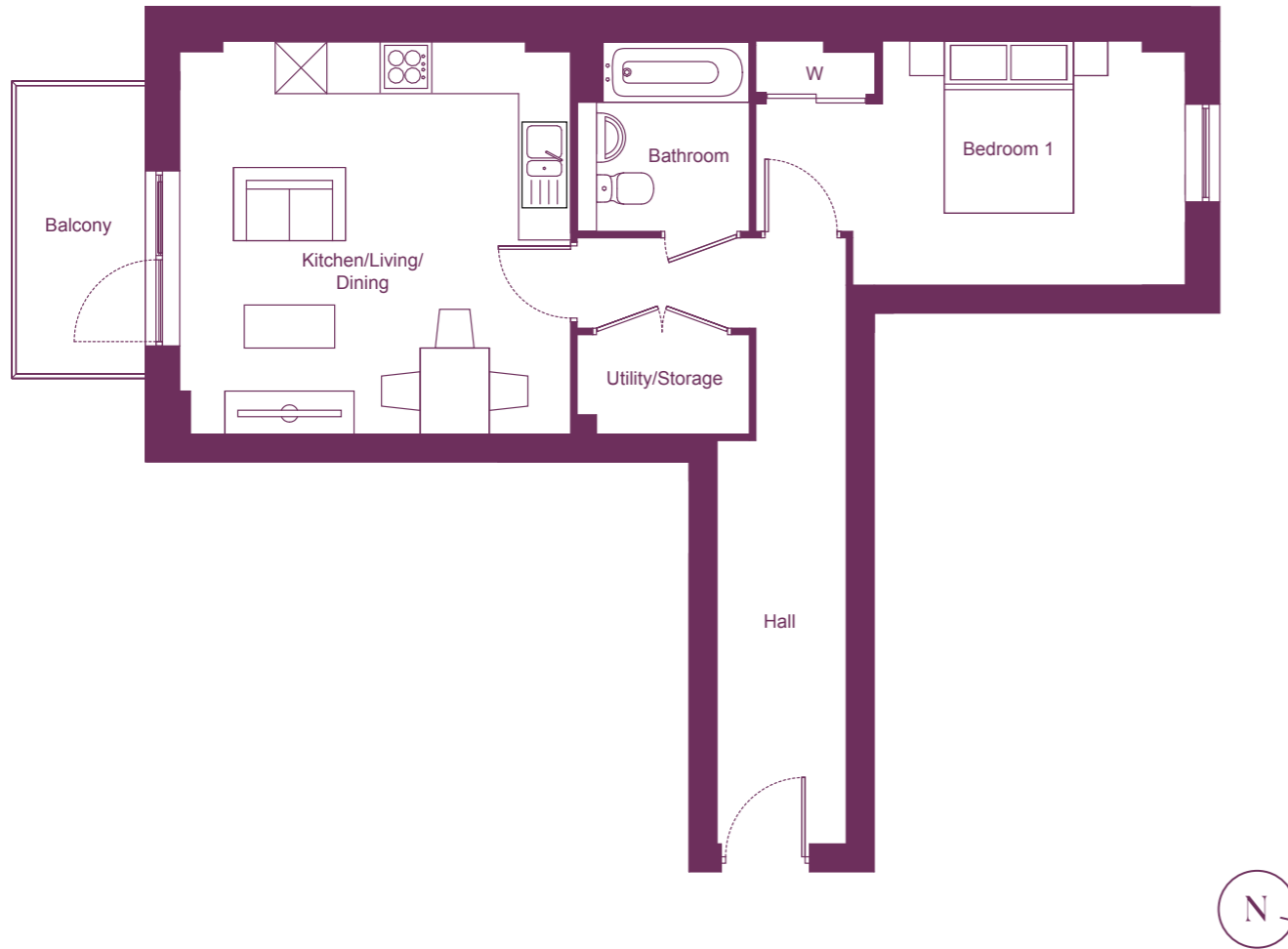
Indicative only. Computer Generated Image subject to change.

# Passenger Court Block B2

- One bedroom
- Two bedroom
- Three bedroom
- Private sale



S - stairs L - lift. Block plans are indicative only



## Plots 139, 144, 151 & 158

ONE BEDROOM APARTMENT

53.2m<sup>2</sup> / 573ft<sup>2</sup>



### Dimensions

Kitchen/Dining/Living	4.49m x 4.25m	14' 9" x 13' 11"
Bedroom 1	5.05m x 2.85m	16' 7" x 9' 4"

Plot 139	Level 1
Plot 144	Level 2
Plot 151	Level 3
Plot 158	Level 4

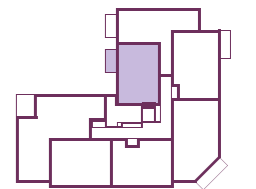
Please note that all dimensions shown are for guidance only. Floorplans are not to scale and are indicative only. Location of windows, doors, bathroom fittings, kitchen units and appliances may differ. Dimensions given are approximate and should not be used to order carpets or furniture. External area sizes and locations may differ from those illustrated.



## Plots 138, 143, 150 & 157

ONE BEDROOM APARTMENT

50.5m<sup>2</sup> / 544ft<sup>2</sup>

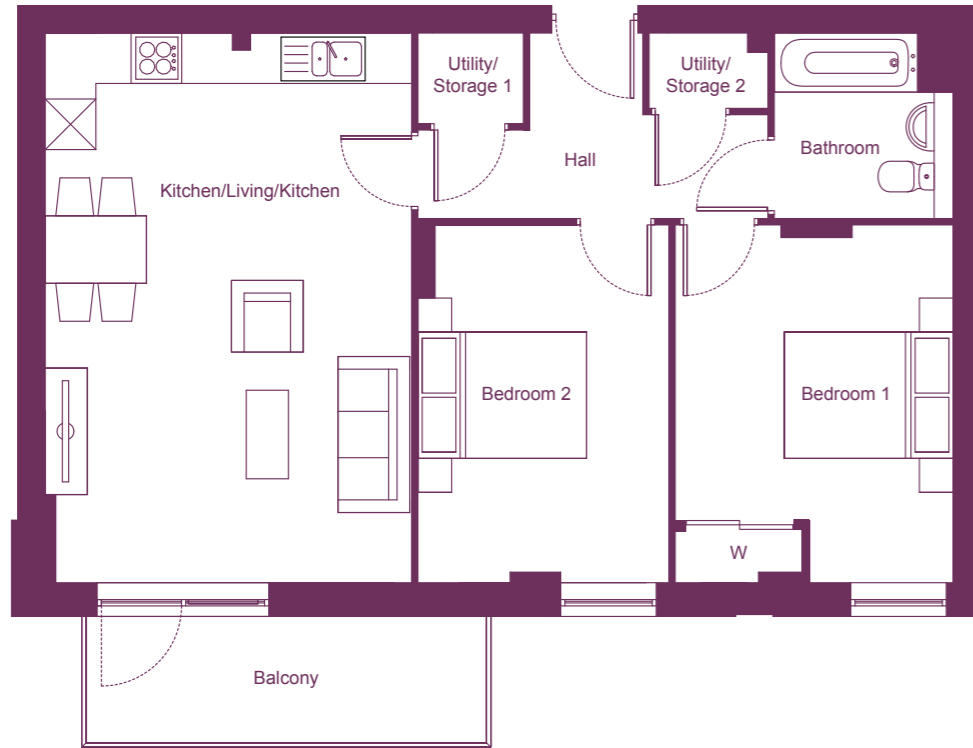


### Dimensions

Kitchen/Dining/Living	5.81m x 4.97m	19' 1" x 16' 4"
Bedroom 1	3.58m x 3.64m	11' 9" x 11' 11"

Plot 138	Level 1
Plot 143	Level 2
Plot 150	Level 3
Plot 157	Level 4

Please note that all dimensions shown are for guidance only. Floorplans are not to scale and are indicative only. Location of windows, doors, bathroom fittings, kitchen units and appliances may differ. Dimensions given are approximate and should not be used to order carpets or furniture. External area sizes and locations may differ from those illustrated.



## Plots 148, 155 & 162

TWO BEDROOM APARTMENT

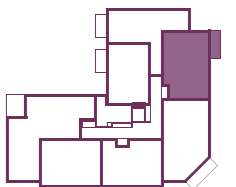
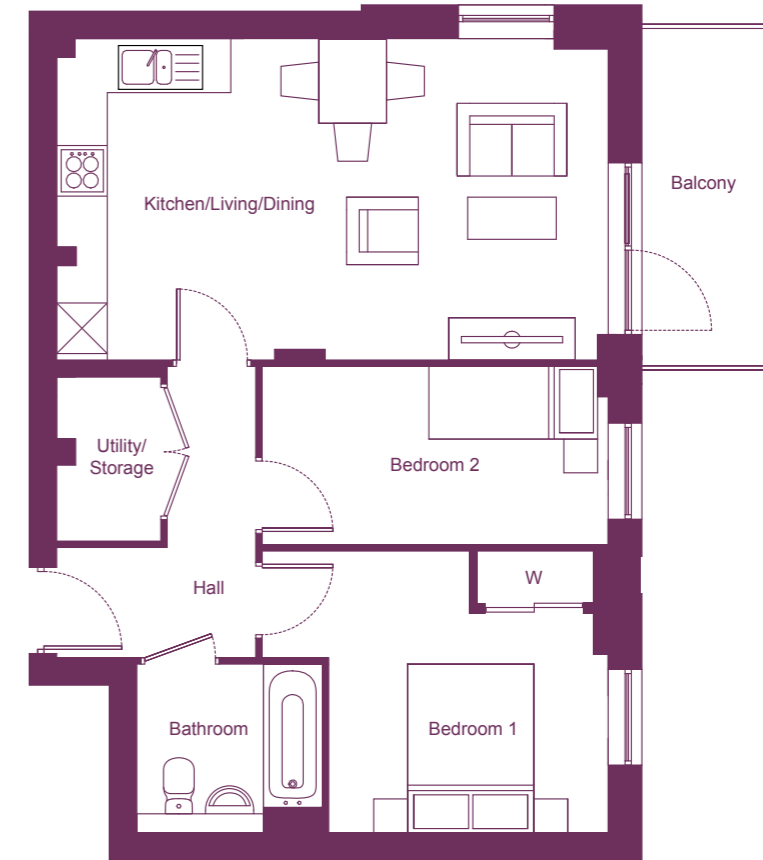
70.0m<sup>2</sup> / 753ft<sup>2</sup>

### Dimensions

Kitchen/Dining/Living	6.59m x 4.30m	21' 7" x 14' 1"
Bedroom 1	4.37m x 3.27m	14' 4" x 10' 9"
Bedroom 2	4.37m x 2.94m	14' 4" x 9' 8"

Plot 148	Level 2
Plot 155	Level 3
Plot 162	Level 4

Please note that all dimensions shown are for guidance only. Floorplans are not to scale and are indicative only. Location of windows, doors, bathroom fittings, kitchen units and appliances may differ. Dimensions given are approximate and should not be used to order carpets or furniture. External area sizes and locations may differ from those illustrated.



## Plot 140, 145, 152 & 159

TWO BEDROOM APARTMENT

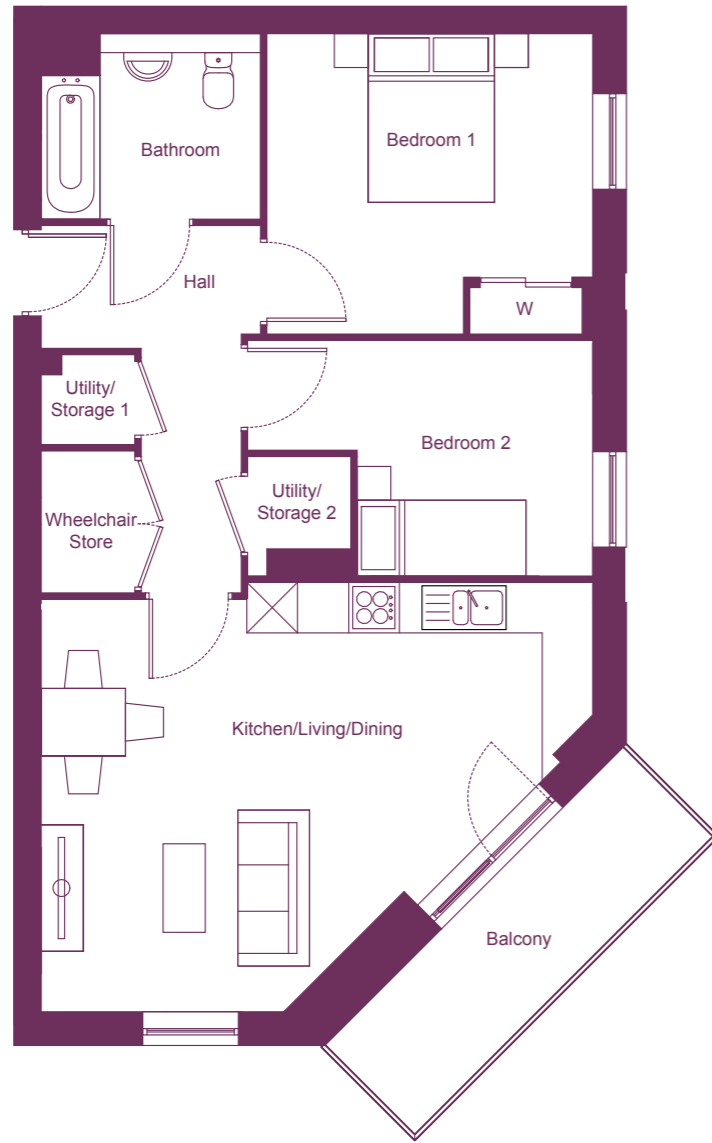
61.2m<sup>2</sup> / 659ft<sup>2</sup>

### Dimensions

Kitchen/Dining/Living	6.56m x 3.89m	21' 6" x 12' 9"
Bedroom 1	3.42m x 3.42m	11' 3" x 11' 3"
Bedroom 2	4.13m x 2.18m	13' 7" x 7' 2"

Plot 140	Level 1
Plot 145	Level 2
Plot 152	Level 3
Plot 159	Level 4

Please note that all dimensions shown are for guidance only. Floorplans are not to scale and are indicative only. Location of windows, doors, bathroom fittings, kitchen units and appliances may differ. Dimensions given are approximate and should not be used to order carpets or furniture. External area sizes and locations may differ from those illustrated.



## Plot 141

TWO BEDROOM APARTMENT

70m<sup>2</sup> / 753ft<sup>2</sup>

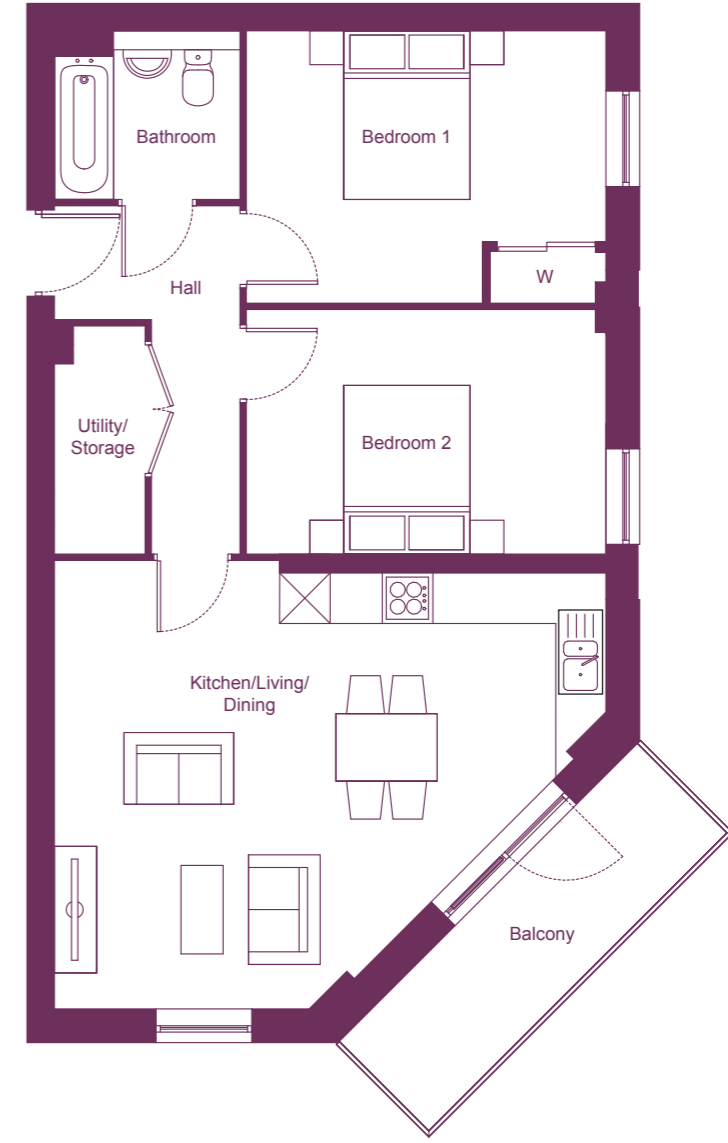
### Dimensions

Kitchen/Dining/Living	6.56m x 5.07m	21' 6" x 16' 8"
Bedroom 1	3.89m x 3.60m	12' 9" x 11' 10"
Bedroom 2	2.18m x 2.78m	7' 2" x 9' 1"

Plot 141 Level 1



Please note that all dimensions shown are for guidance only. Floorplans are not to scale and are indicative only. Location of windows, doors, bathroom fittings, kitchen units and appliances may differ. Dimensions given are approximate and should not be used to order carpets or furniture. External area sizes and locations may differ from those illustrated.



## Plots 146, 153 & 160

TWO BEDROOM APARTMENT

70.1m<sup>2</sup> / 755ft<sup>2</sup>

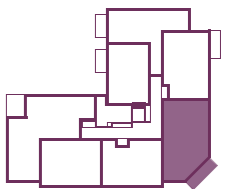
### Dimensions

Kitchen/Dining/Living	6.56m x 5.35m	10' 5" x 24' 7"
Bedroom 1	4.34m x 3.19m	14' 3" x 10' 6"
Bedroom 2	4.34m x 2.94m	14' 3" x 9' 8"

Plot 146 Level 2

Plot 153 Level 3

Plot 160 Level 4



Please note that all dimensions shown are for guidance only. Floorplans are not to scale and are indicative only. Location of windows, doors, bathroom fittings, kitchen units and appliances may differ. Dimensions given are approximate and should not be used to order carpets or furniture. External area sizes and locations may differ from those illustrated.



## Plots 142, 149

### THREE BEDROOM APARTMENT

88.1m<sup>2</sup> / 948ft<sup>2</sup>

#### Dimensions

Kitchen/Dining	5.42m x 2.54m	17' 9" x 8' 4"
Living	4.14m x 3.19m	13' 7" x 10' 6"
Bedroom 1	4.54m x 2.75m	14' 11" x 9' 0"
Bedroom 2	3.59m x 2.23m	11' 9" x 7' 4"
Bedroom 3	3.27m x 2.36m	10' 9" x 7' 9"

Plot 142 Level 1  
Plot 149 Level 2

Please note that all dimensions shown are for guidance only. Floorplans are not to scale and are indicative only. Location of windows, doors, bathroom fittings, kitchen units and appliances may differ. Dimensions given are approximate and should not be used to order carpets or furniture. External area sizes and locations may differ from those illustrated.

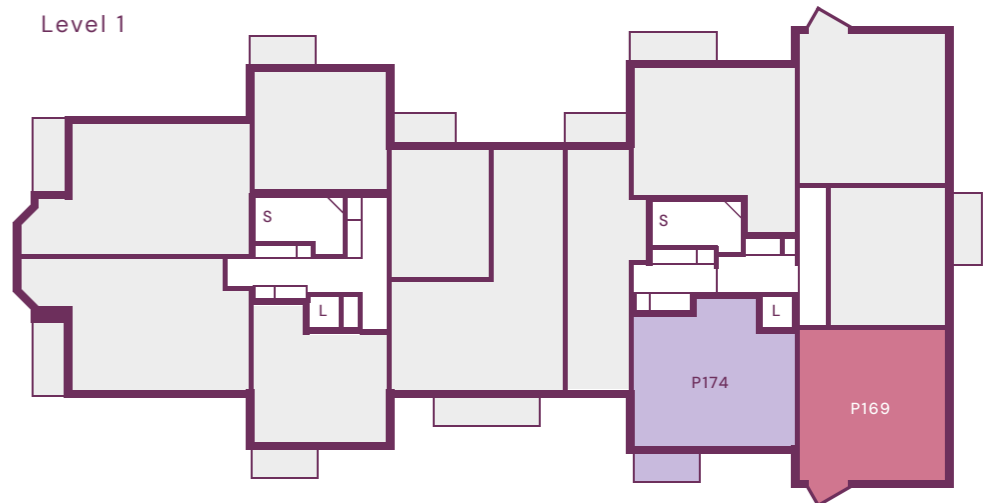


# Steel Court Block C

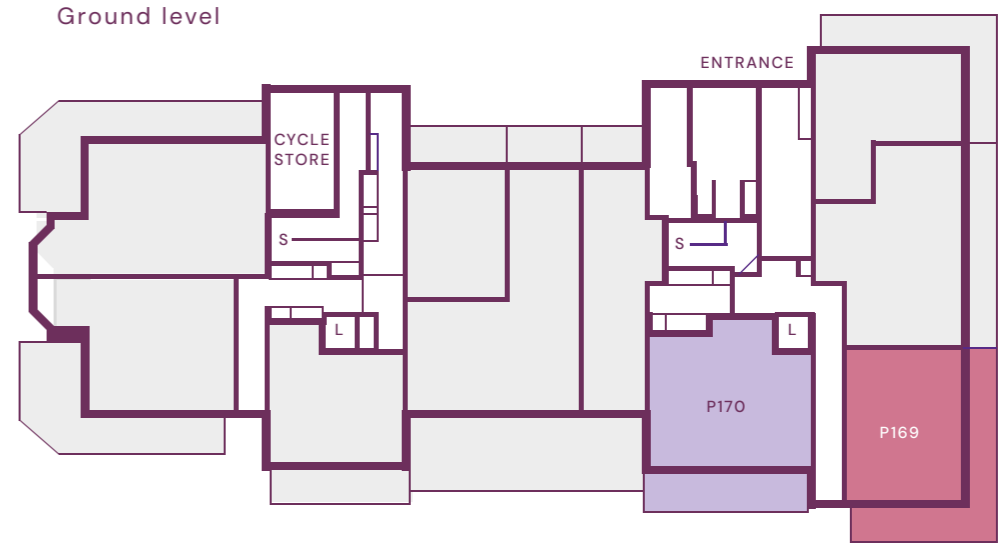
Anticipated  
completion:  
January 2027

- One bedroom
- Three bedroom
- Private sale

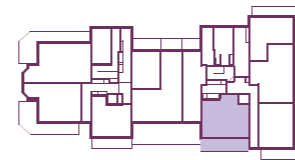
Level 1



Ground level



S - stairs L - lift. Block plans are indicative only



Plot 170 Ground

## Plot 170

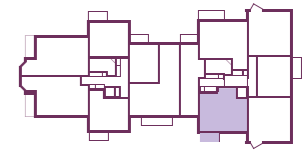
ONE BEDROOM APARTMENT

66m<sup>2</sup> / 710ft<sup>2</sup>

### Dimensions

Kitchen/Dining/Living	5.76m x 4.62m	18' 11" x 15' 2"
Bedroom 1	6.31m x 3.23m	20' 8" x 10' 7"

Please note that all dimensions shown are for guidance only. Floorplans are not to scale and are indicative only. Location of windows, doors, bathroom fittings, kitchen units and appliances may differ. Dimensions given are approximate and should not be used to order carpets or furniture. External area sizes and locations may differ from those illustrated.



Plot 174 Level 1

## Plot 174

ONE BEDROOM APARTMENT

66m<sup>2</sup> / 710ft<sup>2</sup>

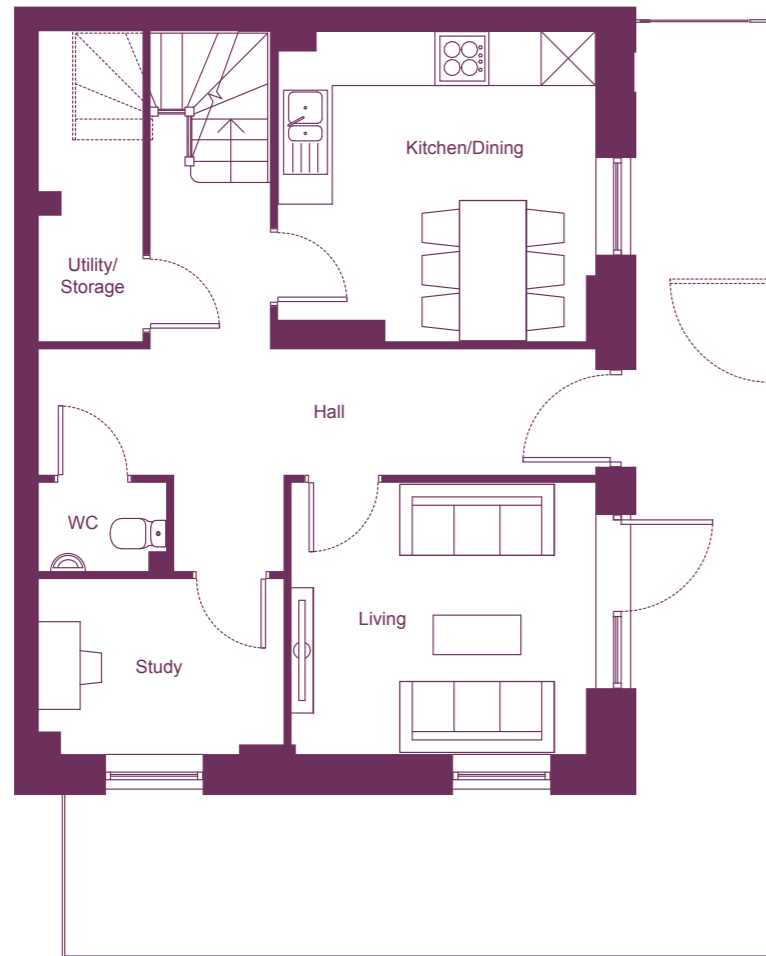
### Dimensions

Kitchen/Dining/Living	5.76m x 4.62m	18' 11" x 15' 2"
Bedroom 1	6.31m x 3.23m	20' 8" x 10' 7"

Please note that all dimensions shown are for guidance only. Floorplans are not to scale and are indicative only. Location of windows, doors, bathroom fittings, kitchen units and appliances may differ. Dimensions given are approximate and should not be used to order carpets or furniture. External area sizes and locations may differ from those illustrated.

# Duplex – Plot 169

## THREE BEDROOM APARTMENT



Ground level

126.8m<sup>2</sup> / 1365ft<sup>2</sup>

### Ground level dimensions

Kitchen/Dining	3.73m x 3.68m	12' 3" x 12' 1"
Living	3.60m x 3.21m	11' 10" x 10' 6"
Study	2.87m x 2.08m	9' 5" x 6' 10"

Please note that all dimensions shown are for guidance only. Floorplans are not to scale and are indicative only. Location of windows, doors, bathroom fittings, kitchen units and appliances may differ. Dimensions given are approximate and should not be used to order carpets or furniture. External area sizes and locations may differ from those illustrated.

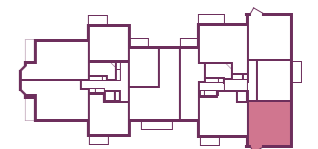


Level 1

### First level dimensions

Bedroom 1	4.71m x 4.14m	15' 5" x 13' 7"
Bedroom 2	3.69m x 3.03m	12' 1" x 9' 11"
Bedroom 3	4.68m x 4.08m	15' 4" x 13' 5"

Please note that all dimensions shown are for guidance only. Floorplans are not to scale and are indicative only. Location of windows, doors, bathroom fittings, kitchen units and appliances may differ. Dimensions given are approximate and should not be used to order carpets or furniture. External area sizes and locations may differ from those illustrated.



Plot 169 Ground & level 1

# How Shared Ownership works

## OWN THE HOME YOU LOVE, FOR LESS

Our homes at Quartoria are available to purchase with Shared Ownership, providing you with an affordable way into home ownership.

It's an opportunity to buy the home that's right for you without needing a large mortgage or the deposit that goes with it.

Put simply, you buy a share in the home that's affordable for you (starting from 25%) and pay a reduced rent on the share we own.

Deposits start from just 5-10% of your share value, offering an achievable savings goal that helps you get moving sooner.

As your finances allow, you can buy further shares in your home as and when you choose. This is through a process known as staircasing. The amount you pay us in rent will go down as the amount of the property you own goes up.

Shared Ownership is subject to availability and qualifying criteria. Priority will be given to people who live or work in Barnet.

Service charges apply to cover the cost of communal maintenance and building insurance.

1

Search for the home that's right for you

2

Apply in just two simple steps:

1. Speak to our Sales Advisor
2. Arrange to speak to a mortgage advisor to arrange a financial assessment

3

View and reserve a home

4

Appoint a solicitor

5

Apply for your mortgage

6

Exchange contracts when everything is in place

7

Move in, put the kettle on and put your feet up!



## About SNG

SNG is one of the UK's top housing associations, providing over 85,000 homes across the South of England, including London.

We are passionate about giving everyone the opportunity to own a home of their own and work closely with local authorities to deliver high-quality, affordable homes in desirable places for our customers. To date, we've helped thousands of customers step onto the property ladder with Shared Ownership, and thanks to our social purpose we will continue to help thousands more.

We're proud to be a home builder with a difference, reinvesting every pound of profit we make into our new and existing homes and services so that we can maintain the highest standards of living and environment for our customers and communities. We know that the more houses we can build, the more homeowners we can help – and that's the best part.



Sovereign Network Group is charitable. All computer generated images (CGIs) used in these particulars are for illustrative purposes only, are not intended to provide an actual forecast or impression of the measurements, dimensions, layouts, placements, context and/or finishes of the buildings premises or landscaping within the development, and should not be relied upon as true or accurate. These brief particulars have been prepared and are intended as a guide to supplement an inspection or survey and do not form part of any offer or contract. Their accuracy is not guaranteed. They contain statement of opinion and in some instances we have relied upon information supplied by others. This brochure includes imagery for illustrative purposes only. The map is not to scale. Design elements and specification details may change without notice. You should verify the particulars on your visit to the site and with the sales agent. The particulars do not obviate the need for a survey and all the appropriate enquiries. Accordingly, there shall be no liability as a result of any effort or omission in the particulars or information given. All information believed to be correct at time of print. June 2026.