



# Monument View

A collection of 2 & 3 bedroom homes

# A place for new beginnings


**Located on the edge of Wellington in Somerset, Monument View is an attractive new development situated close to the M5 and A38.**

The market town of Wellington is located 7 miles south west of Taunton close to the Devon border. It has a range of specialist shops, supermarkets and cafes and also hosts regular Farmers' Markets. Wellington Park is a Grade II listed Edwardian park that occupies 1.8 hectares.

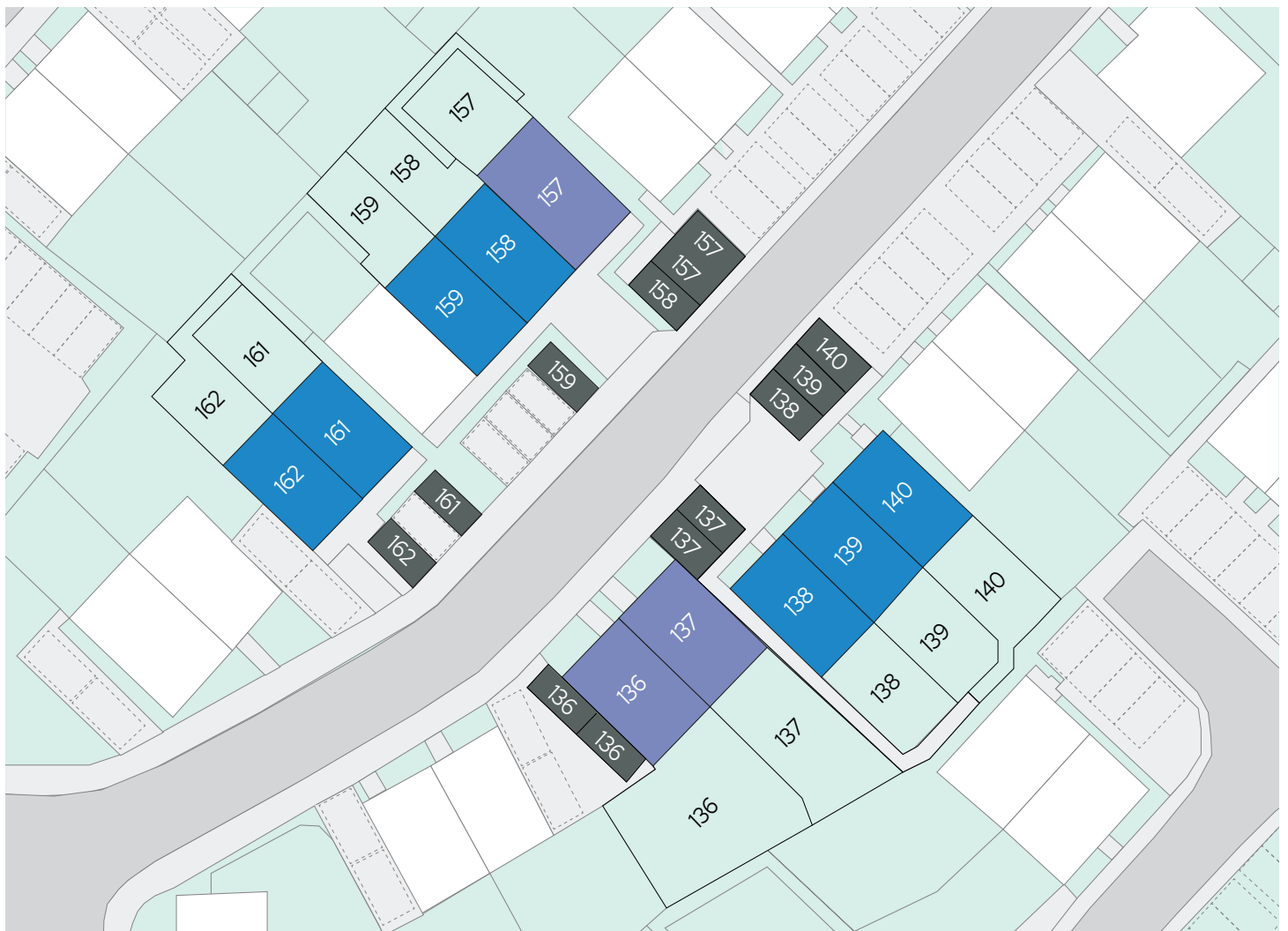
These 2 and 3 bedroom homes each benefit from an open plan kitchen/dining room with separate living room and downstairs cloakroom. There's a family bathroom on the first floor, a private garden and allocated parking.

- Cherry**
- Apple**
- Parking spaces**



 **Rose Close,**  
Wellington,  
TA2 9GS

North









# Cherry

2 bed terraced & semi detached  
Plot 138\*, 139\*, 140\*, 158\*, 159, 161\*,  
162

2  1  1 

## Room

Kitchen/dining	4.74m x 3.25m
Living	3.72m x 3.65m
Bedroom 1	4.74m x 3.45m
Bedroom 2	4.00m x 2.56m



CGI shows plots 138-140






\* Mirrored plot S Storage

We operate a policy of continuous product development and individual features such as windows and elevational treatments may vary. Consequently, particulars contained within this document should be treated as general guidance only. They do not constitute a contract, part of a contract or a warranty. Computer generated images and photographs are for illustration purposes only and may not accurately depict individual plots. Dimensions provided are for general guidance and are not intended to be used for carpet sizes, appliances, spaces or items of furniture. All dimensions are maximum.

# Apple

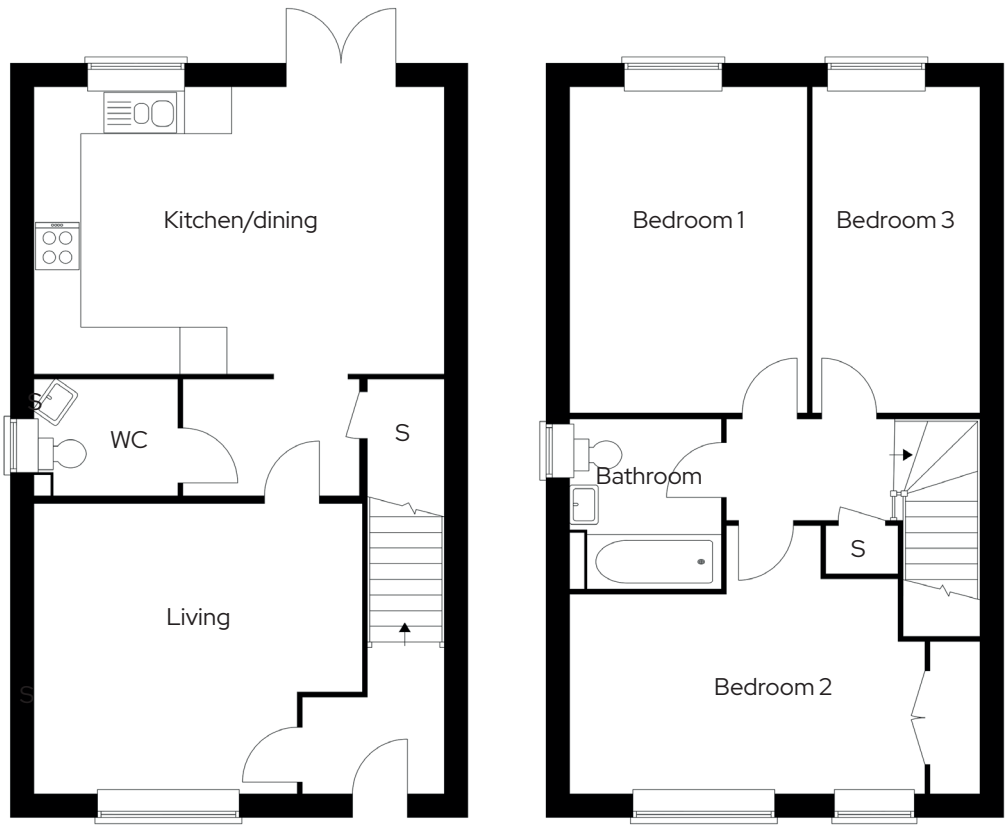
3 bed terraced & semi detached  
Plot 136\*, 137, 157\*

3  1  2 

Room	
Kitchen/dining	5.19m x 3.64m
Living	4.17m x 3.69m
Bedroom 1	3.00m x 4.15m
Bedroom 2	4.50m x 2.52m
Bedroom 3	2.10m x 4.15m



CGI shows plots 136-137



\* Mirrored plot   S Storage

We operate a policy of continuous product development and individual features such as windows and elevational treatments may vary. Consequently, particulars contained within this document should be treated as general guidance only. They do not constitute a contract, part of a contract or a warranty. Computer generated images and photographs are for illustration purposes only and may not accurately depict individual plots. Dimensions provided are for general guidance and are not intended to be used for carpet sizes, appliances, spaces or items of furniture. All dimensions are maximum.

## Get in touch

### 0300 330 0718

To find out more about shared ownership and the homes we offer, get in touch today.

→ [sovereignliving.org.uk](https://sovereignliving.org.uk)

### Head office

Sovereign House  
Basing View  
Basingstoke  
RG21 4FA

As one of the UK's leading shared ownership providers, Sovereign is passionate about giving everyone the opportunity to own their own home.

Our highly dedicated sales team has already helped thousands of people step onto the property ladder and our profit with a purpose principle means we can continue to help thousands more. Established, experienced, and affordable, we are proud to help more people live where they love.