

# Potters Grove

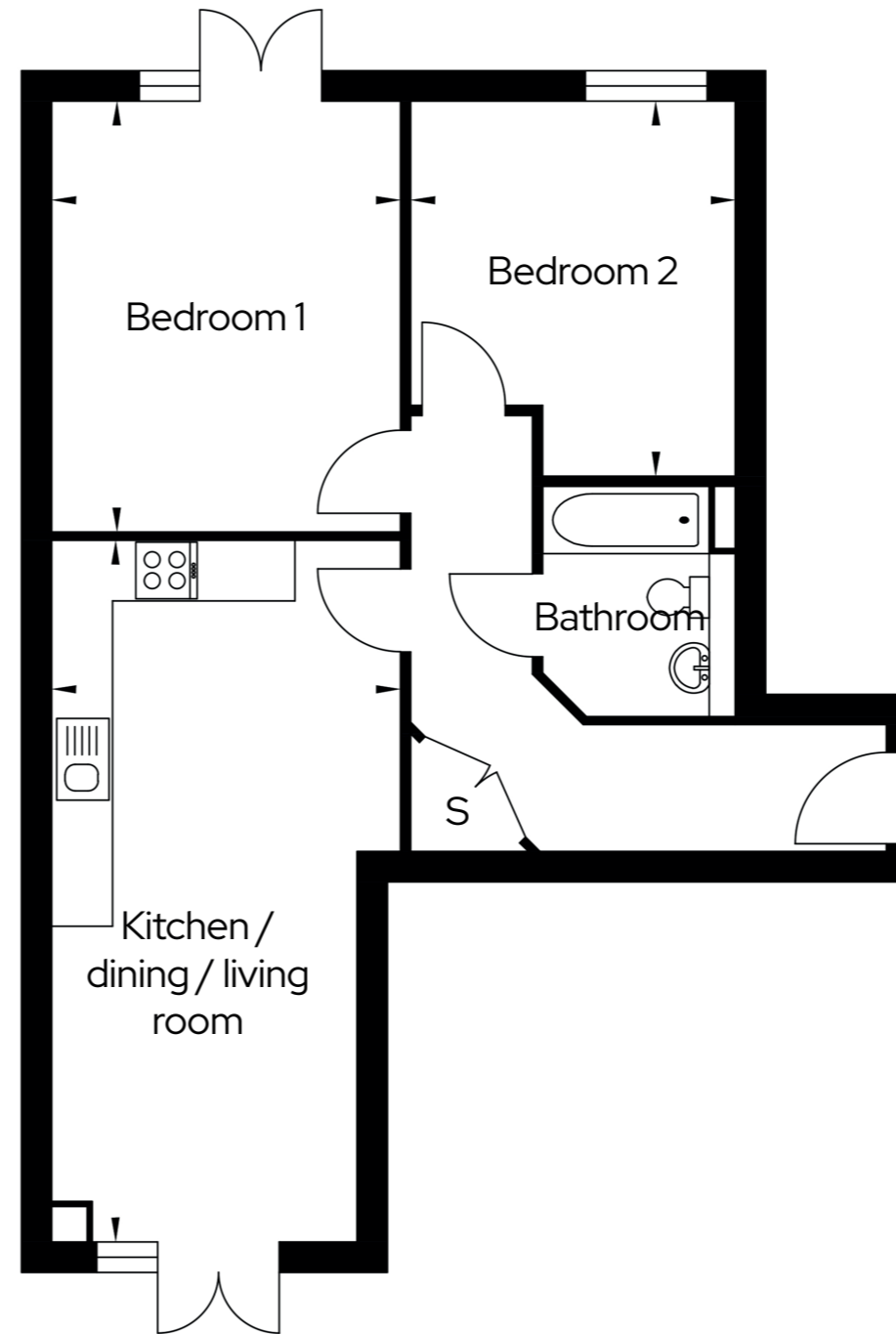
## Type A3

2 Bedroom apartment  
Plots 90, 100 & 110

2  1  1 

### Room

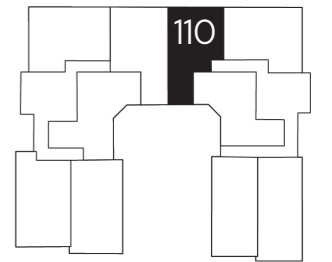
Kitchen/Dining/Living	7.0m x 3.1m
Bedroom one	4.3m x 3.5m
Bedroom two	3.7m x 3.3m



Apartment plan shown is the ground floor apartment number 90 with doors opening onto a terrace

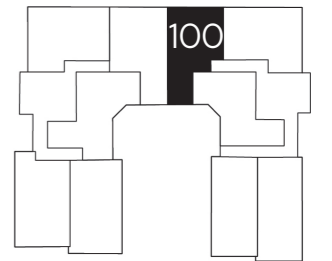
S Storage

Second Floor



This apartment has windows only to the kitchen/living/dining area and bedroom 1

First Floor



This apartment has a Juliette balcony with doors opening inwards to the kitchen/living/dining area and a Juliette balcony to bedroom 1 with doors opening inwards

Ground Floor

