



Brooklands Park




A stylish collection of 2 bed homes

Balance without compromise

A collection of stylish 2 bedroom homes available with shared ownership are coming soon to the Brooklands Park development in Stoke Gifford.

Built by Crest Nicholson, these new homes will each come complete with a modern fitted kitchen with a built-in oven, hob and extractor, stylish open-plan kitchen/dining, and a downstairs cloakroom. Also benefitting from two double bedrooms, stylish bathroom suite with shower over bath, private enclosed garden laid to lawn including a shed and one allocated parking space.



-  The Okebourne
-  Parking spaces
-  Visitor parking

 **Brooklands Park,**
Crop Leaze,
Stoke Gifford,
Bristol,
South Gloucestershire,
BS34 8BT




North





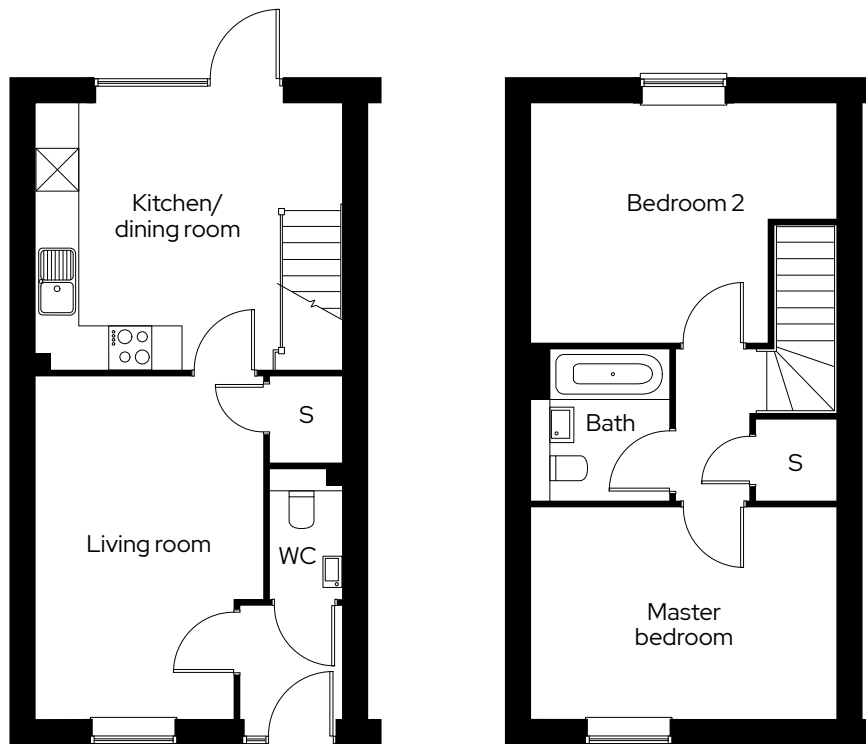

The Okebourne

2 bedroom end terraced
Plot 473*, 476

2  1  1 

Room




Kitchen/dining room	4.5m x 3.9m
Living room	3.3m x 4.9m
Master bedroom	4.5m x 3.1m
Bedroom 2	4.5m x 3.5m



* Mirrored plot S Storage

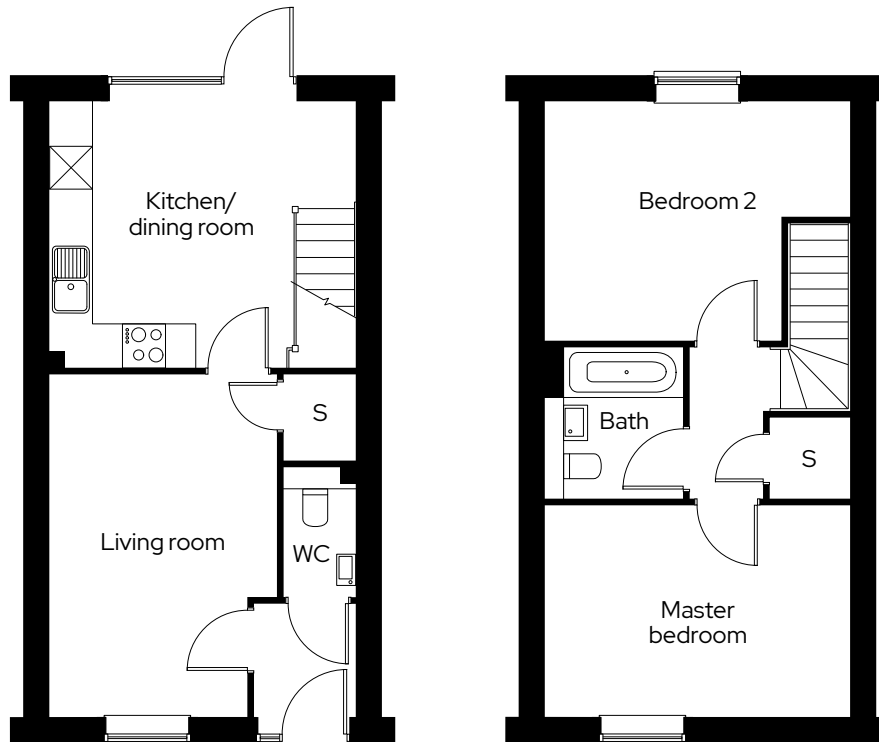
The Okebourne

2 bedroom mid terraced
Plot 474, 475*

2  1  1 

Room

Kitchen/dining room	4.5m x 3.9m
Living room	3.3m x 4.9m
Master bedroom	4.5m x 3.1m
Bedroom 2	4.5m x 3.5m



* Mirrored plot S Storage

We operate a policy of continuous product development and individual features such as windows and elevational treatments may vary. Consequently, particulars contained within this document should be treated as general guidance only. They do not constitute a contract, part of a contract or a warranty. Computer generated images and photographs are for illustration purposes only and may not accurately depict individual plots. Dimensions provided are for general guidance and are not intended to be used for carpet sizes, appliances, spaces or items of furniture. All dimensions are maximum.

Get in touch

0300 330 0718

To find out more about shared ownership and the homes we offer, get in touch today.

→ sovereignliving.org.uk

Head office

Sovereign House
Basing View
Basingstoke
RG21 4FA

As one of the UK's leading shared ownership providers, Sovereign is passionate about giving everyone the opportunity to own their own home.

Our highly dedicated sales team has already helped thousands of people step onto the property ladder and our profit with a purpose principle means we can continue to help thousands more. Established, experienced, and affordable, we are proud to help more people live where they love.