



HydroReport 10/2021

Sonderdruck | Supplemento | Extra print
Climareport N. 310

AUTONOME PROVINZ BOZEN - SÜDTIROL
Agenteur für Bevölkerungsschutz



PROVINCIA AUTONOMA DI BOLZANO - ALTO ADIGE
Agenzia per la Protezione civile

Foto des Monats

Foto del mese


Picture of the month



Ahr I Aurino



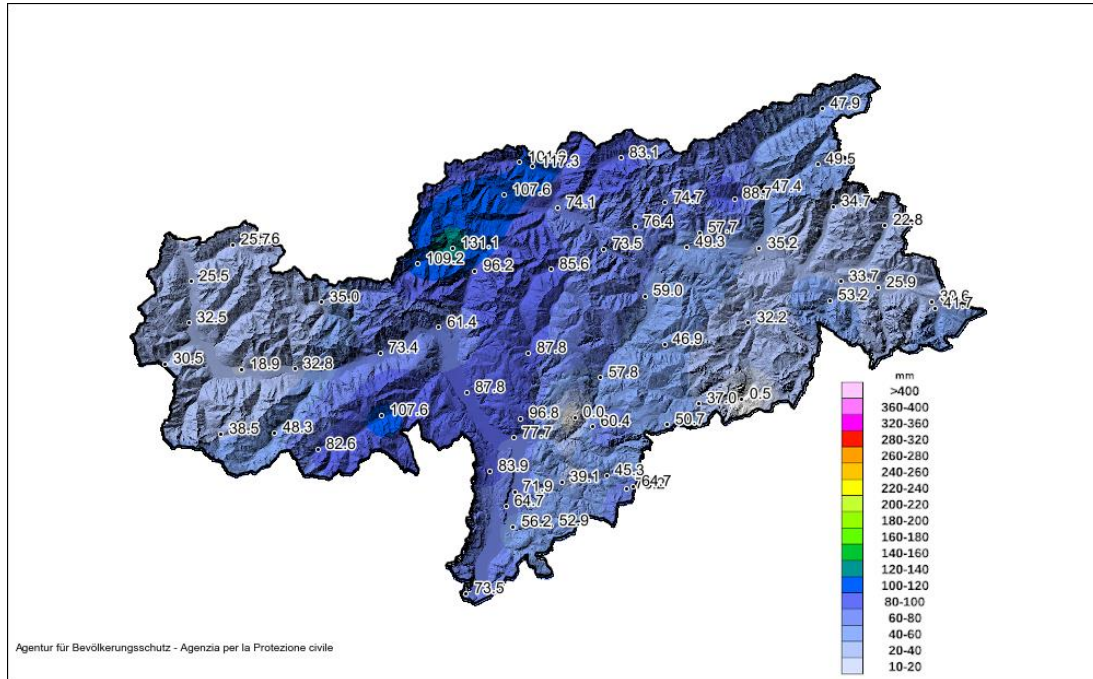
Meander im Unterlauf der Ahr.
Meandro nel corso inferiore dell'Aurino.
Meander in the lower reach of the Aurino river.

 Luca Messina, 14/10/2021

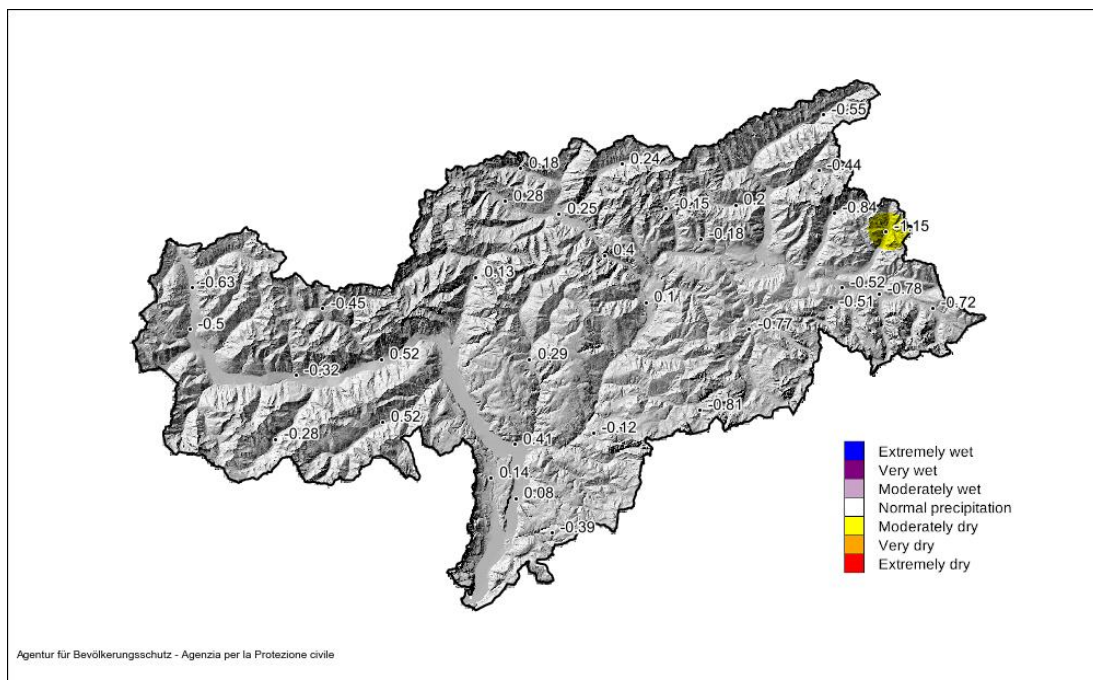
Niederschläge Precipitazioni Rainfall



Regionale Verteilung der Niederschläge | Precipitazioni areali | Regional rainfall



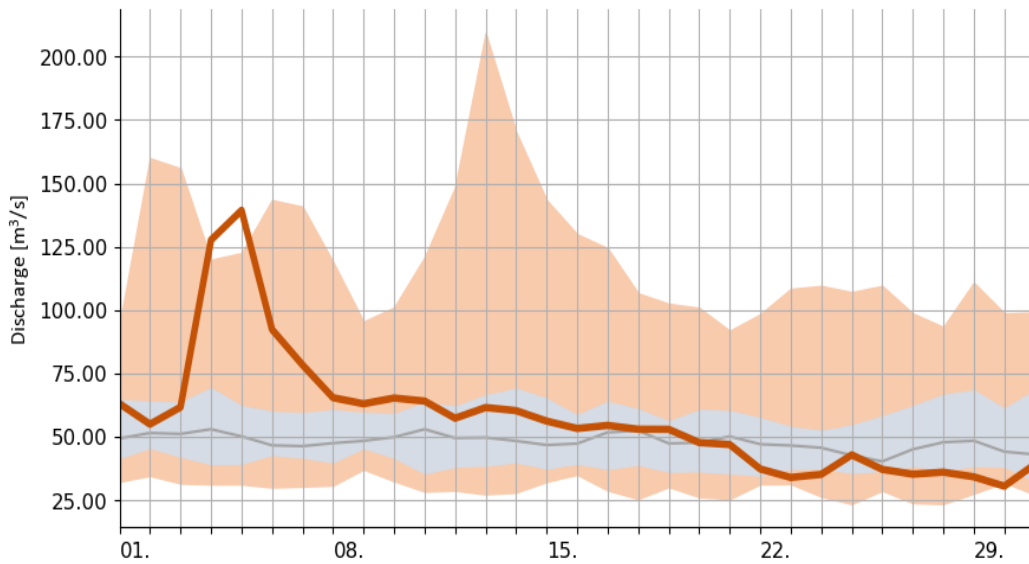
Standardisierter Niederschlagsindex | Indice SPI | Standardised Precipitation Index



Fließgewässer Corsi d'acqua Rivers



Etsch, Sigmundskron | Adige, Ponte Adige



2723.0 km²

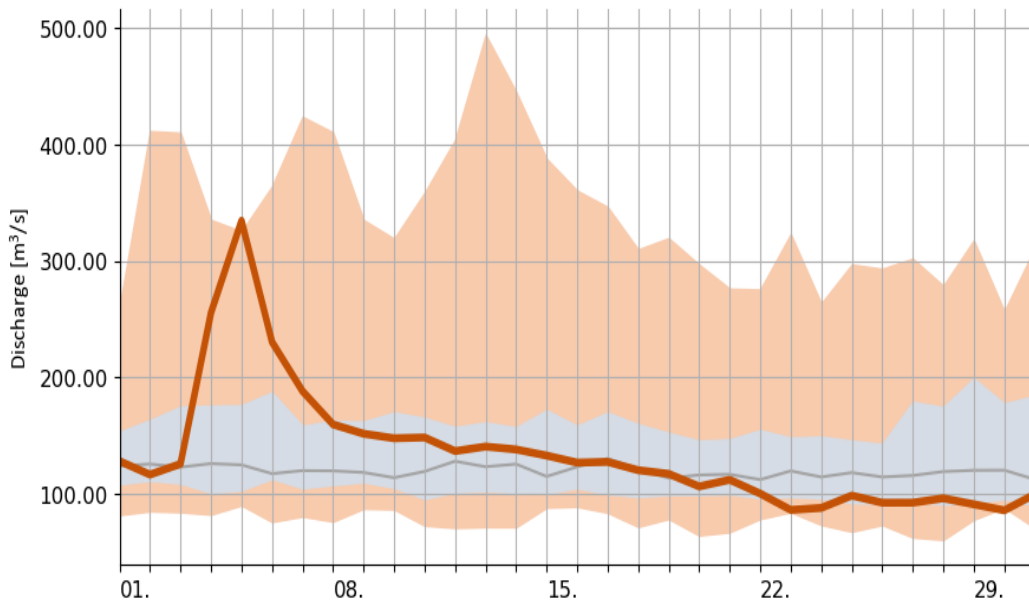


3893.0 m

1907.0 m

240.0 m

Etsch, Branzoll | Adige, Bronzolo



6927.0 km²



3893.0 m

1804.0 m

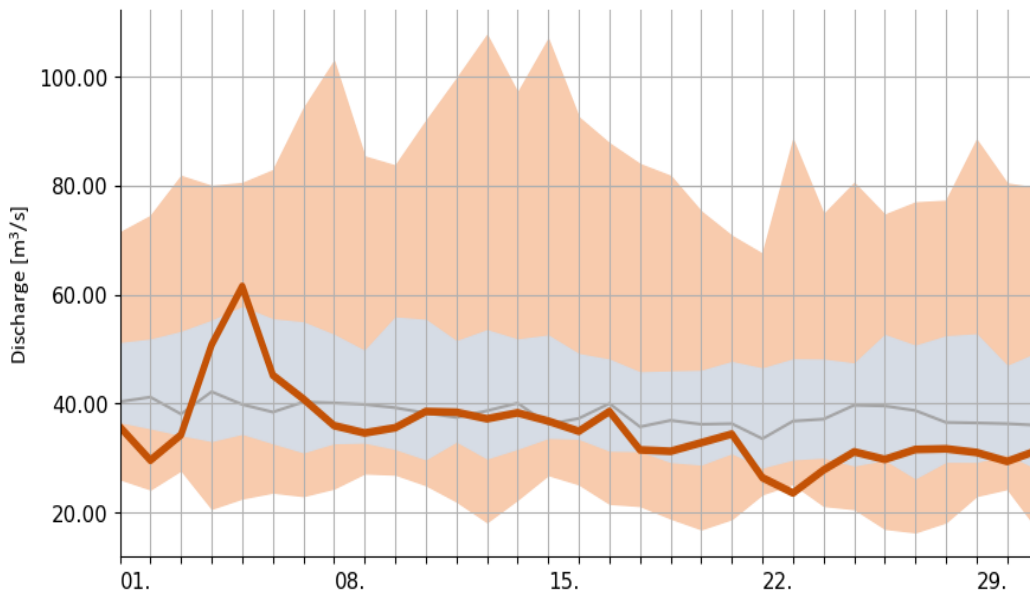
228.0 m

- Daily mean
- 5th + 95th percentile range
- 50th percentile
- 25th + 75th percentile range

Fließgewässer Corsi d'acqua Rivers



Rienz, Vintl | Rienza, Vandoies



1919.0 km²

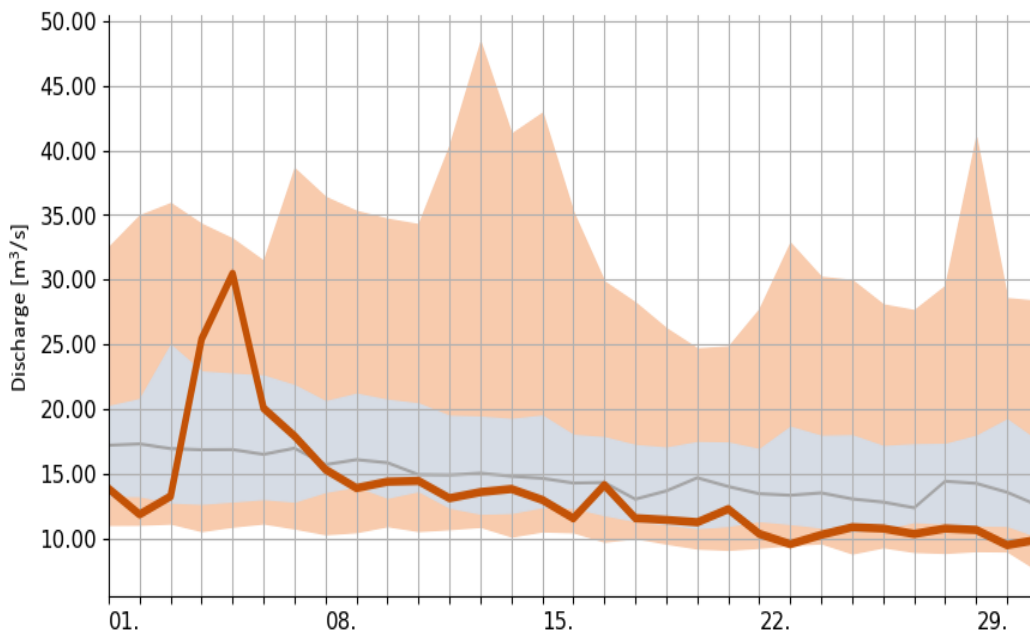


3498.0 m

1861.0 m

735.0 m

Ahr, St.Georgen | Aurino, San Giorgio



613.0 km²



3470.0 m

2038.0 m

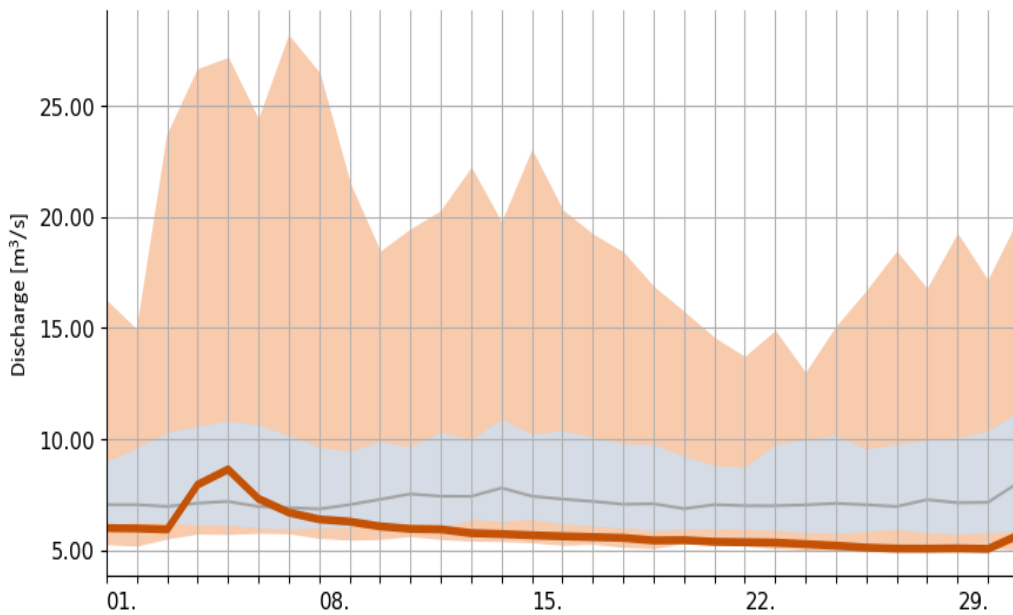
819.0 m

- Daily mean
- 5th + 95th percentile range
- 50th percentile
- 25th + 75th percentile range

Fließgewässer Corsi d'acqua Rivers

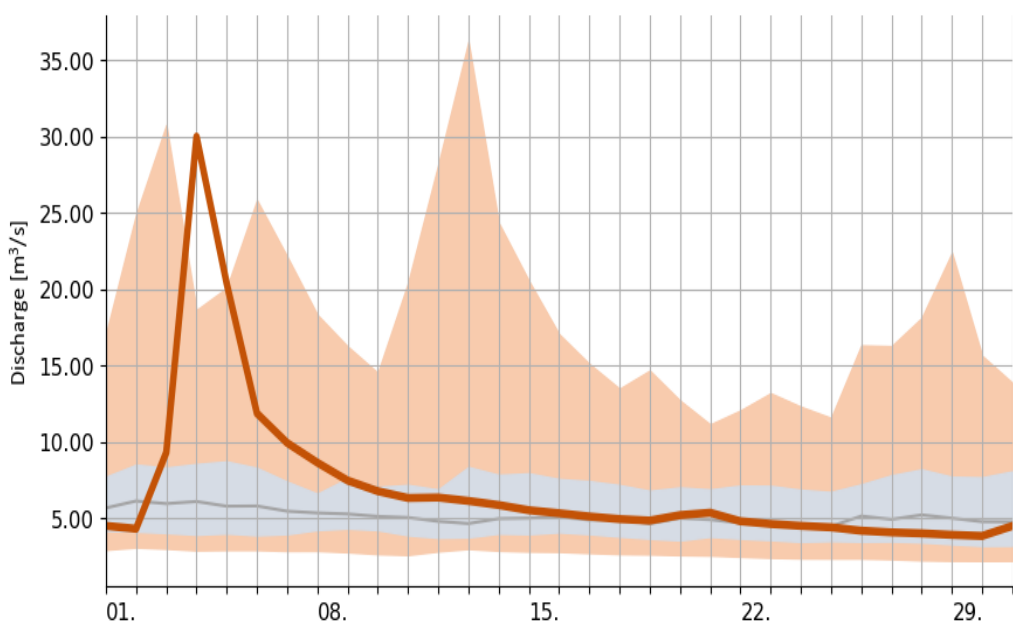



Gader, Montal | Gadera, Mantana







 389.0 km²
 3120.0 m
 1856.0 m
 813.0 m

Mareiterbach, Sterzing | Rio Ridanna, Vipiteno



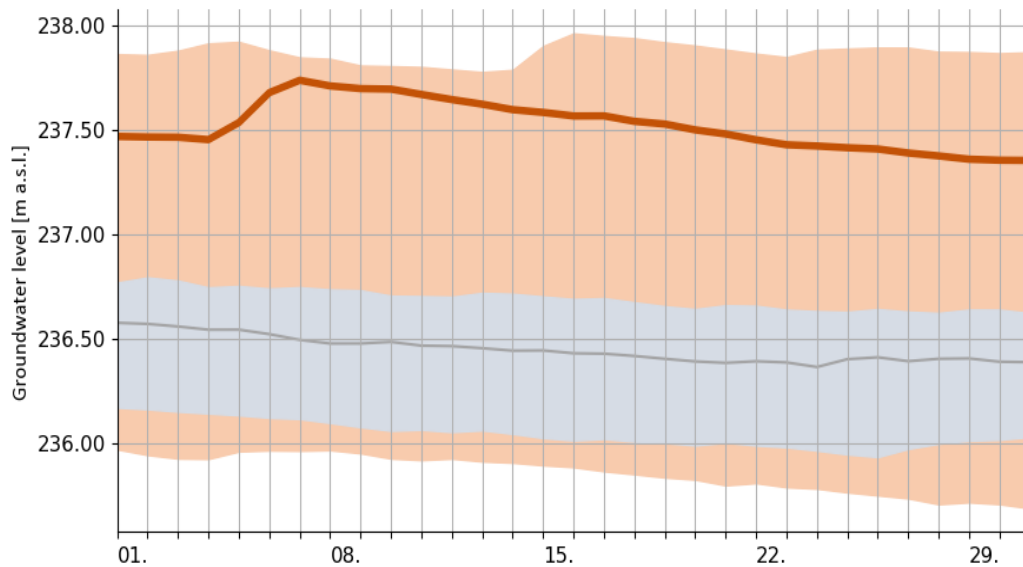
 207.4 km²
 3456.0 m
 1927.0 m
 939.0 m

 Daily mean
 5th + 95th percentile range
 50th percentile
 25th + 75th percentile range

Grundwasser Acque sotterranee Groundwater

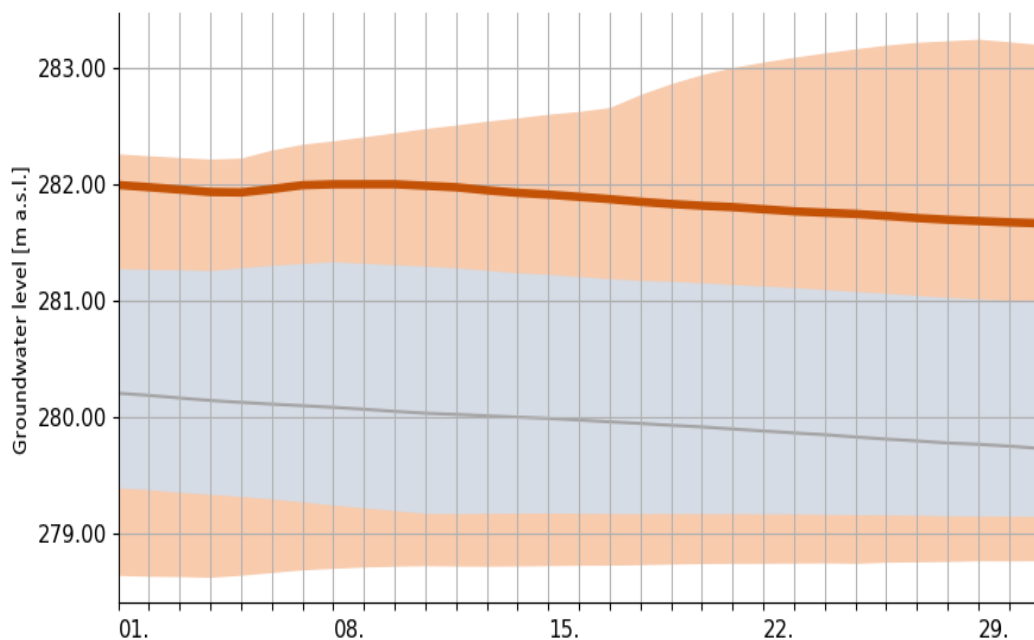


Bozen, Einsteinstrasse | Bolzano, via Einstein




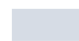


 241.2 m

Meran, Viehmarkt | Merano, Foro Boario

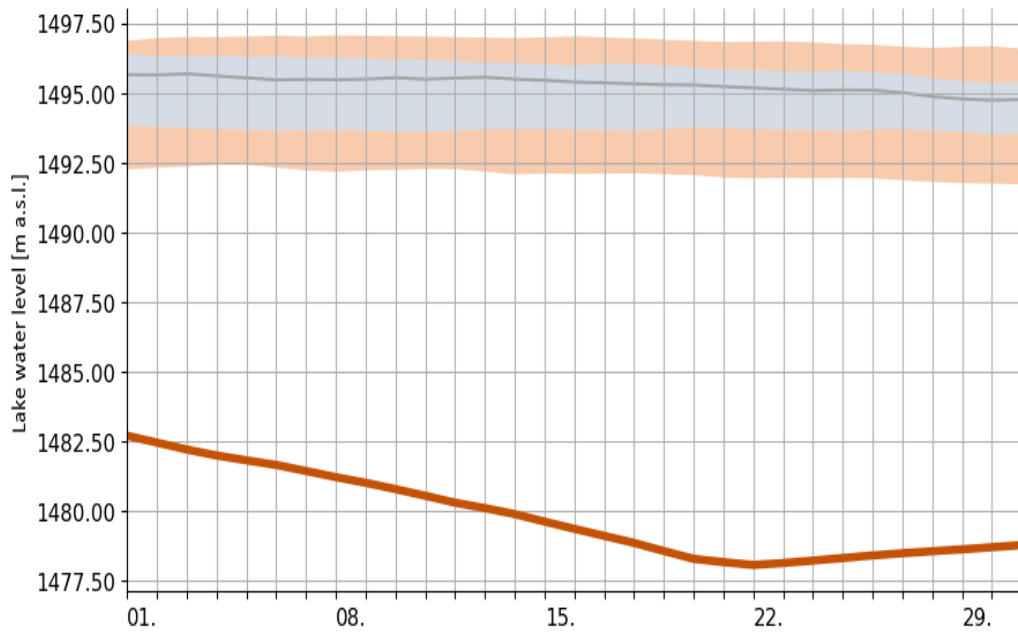


 301.2 m

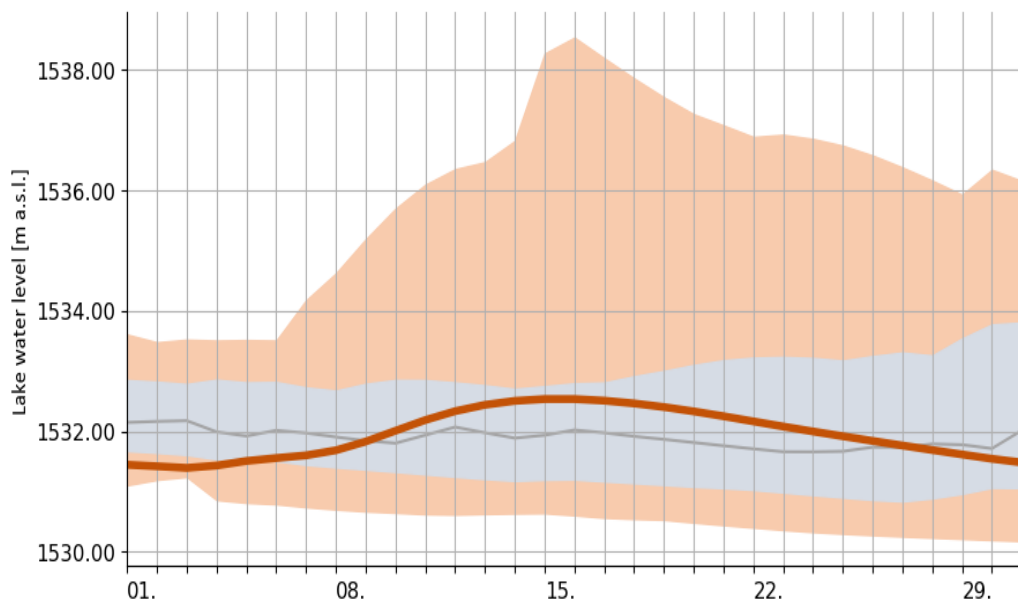
-  Daily mean
-  5th + 95th percentile range
-  50th percentile
-  25th + 75th percentile range



Reschen Stausee | Lago artificiale di Resia



Karersee | Lago di Carezza



- Daily mean
- 5th + 95th percentile range
- 50th percentile
- 25th + 75th percentile range

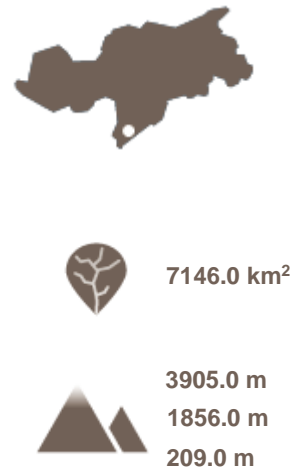
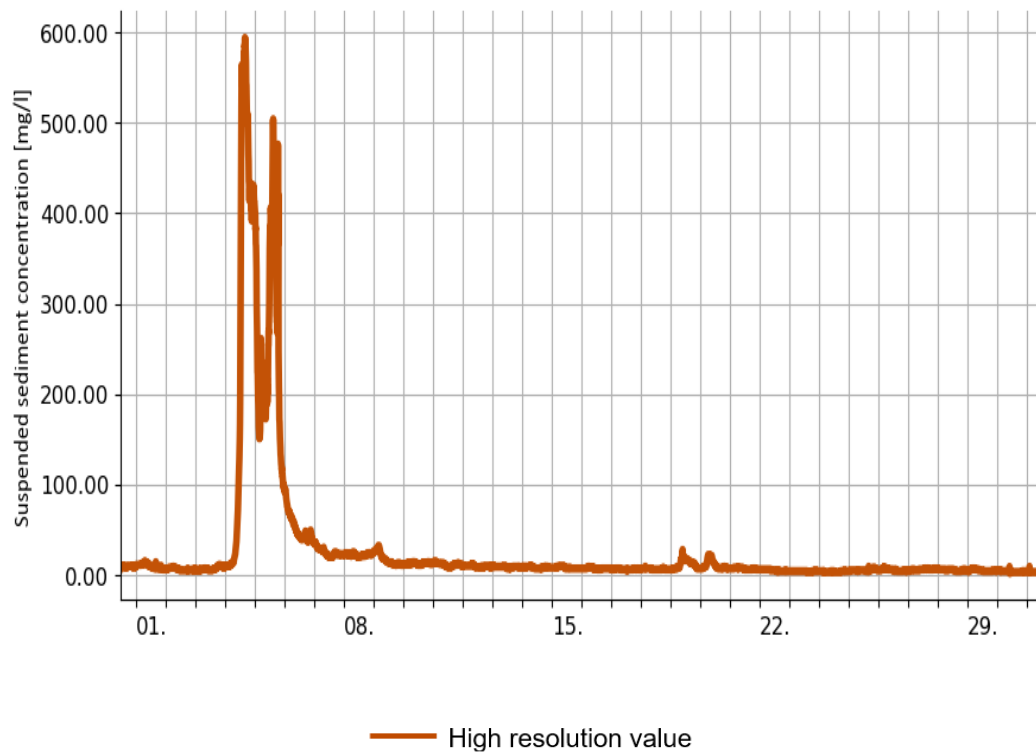
Sedimentfracht

Carico di sedimenti

Sediment Load



Etsch, Salurn | Adige, Salorno





Regionale Verteilung der Niederschläge [mm]: Räumliche Verteilung des Niederschlags, die durch Interpolation und Extrapolation der an den einzelnen Wetterstationen gemessenen monatlichen Niederschlagssummen gewonnen wird.

Standardisierter Niederschlagsindex SPI: Klimatologischer Index zur Identifikation von Niederschlagsüberschüssen und -defiziten (Trockenheit).

Durchflussmenge [m³/s]: Wasservolumen, das pro Zeiteinheit einen definierten Fließquerschnitt durchfließt.

Grundwasserstand [m ü.M.]: Höhe des Grundwasserspiegels, als Höhe über dem Meeresspiegel angegeben.

Seewasserstand [m ü.M.]: Höhe des Wasserspiegels, als Höhe über dem Meeresspiegel angegeben.

Schwebstoffkonzentration [mg/l]: Konzentration der Sedimente, die in Form von Suspensionen von Flüssen transportiert werden.

Referenzperiode [Jahre]: Langjährige Messperiode, die zur Berechnung der statistischen Normwerte (Perzentile) herangezogen wird. Nach Möglichkeit wird in diesem Bericht die 30-jährige WMO-Periode 1991-2020 verwendet.

Perzentil: Statistisches Lagemaß zur Beschreibung der mittleren hydrologischen Verhältnisse einer Station. Zum Beispiel ist das 95. Perzentil der Wert, unterhalb dessen 95% der Beobachtungen (in der Referenzperiode) liegen. Das 50. Perzentil, oder Median, teilt die Werte einer Verteilung in zwei gleich große Hälften.

Precipitazioni areali [mm]: distribuzione spaziale delle precipitazioni, che si ottiene per interpolazione ed estrapolazione delle cumulate mensili misurate alle singole stazioni meteorologiche.

Indice SPI: indice climatologico utilizzato per l'identificazione delle eccedenze e dei deficit di precipitazione (siccità).

Portata [m³/s]: volume d'acqua che attraversa una determinata sezione nell'unità di tempo.

Altezza della falda [m s.l.m.]: livello delle acque sotterranee, indicato come altezza sul livello del mare.

Livello del lago [m s.l.m.]: livello della superficie dell'acqua, indicato come altezza sul livello del mare.

Concentrazione di solidi sospesi [mg/l]: concentrazione dei sedimenti in sospensione trasportati dai fiumi.

Periodo di riferimento [anni]: periodo di misura pluriennale utilizzato per il calcolo dei valori statistici di riferimento (percentili). Laddove possibile, nel presente report viene utilizzato il periodo trentennale del WMO 1991-2020.

Percentile: indice statistico di posizione, utilizzato per descrivere le condizioni idrologiche medie di una stazione. Ad esempio, il 95° percentile è il valore al di sotto del quale si trova il 95% delle osservazioni (nel periodo di riferimento). Il 50° percentile, o valore mediano, divide i valori di una distribuzione in due parti uguali.

Regional rainfall [mm]: Spatial distribution of rainfall, which is obtained by interpolation and extrapolation of the cumulative monthly rainfall measured at the single weather stations.

Standardised precipitation index SPI: Climatological index, used for the identification of precipitation surpluses and deficits (drought).

Discharge [m³/s]: Volume of water that passes a given cross section of a watercourse over unit time.

Groundwater level [m a.s.l.]: Height of the water table, indicated as height above sea level.

Lake water level [m a.s.l.]: Height of the water surface, indicated as height above sea level.

Suspended sediment concentration [mg/l]: Concentration of suspended solids transported by rivers.

Reference period [years]: Multiannual measurement period used for the calculation of statistical reference values (percentiles). Where possible, the 30-year WMO period 1991-2020 is used in this report.

Percentile: Statistical value, used to describe the average hydrological conditions of a station. For example, the 95th percentile is the value below which 95% of the observations (in the reference period) are found. The 50th percentile, or median value, divides the values of a distribution into two equal parts.

Kennwerte des Einzugsgebiets | Caratteristiche del bacino idrografico | Characteristics of the watershed



Stationsstandort mit Einzugsgebiet (dunkel)
Posizione della stazione con bacino (scuro)
Station location with catchment area (dark)



Einzugsgebietsfläche
Area del bacino imbrifero
Catchment area



Max., mittlere, min. Höhe
Quota massima, media, minima
Max., average, min. height

**Zuständiges Amt | Ufficio competente | Reference office**

Amt für Hydrologie und Stauanlagen | Ufficio Idrologia e dighe | Office for Hydrology and dams

Verantwortlicher Direktor | Direttore responsabile | Responsible director

Roberto Dinale

Konzept | Ideazione | Concept

Rudi Nadalet

Autoren | Autori | Authors

Rudi Nadalet, Roberto Dinale, Stefan Ghetta, Luca Maraldo, Martin Pernter, Mauro Tollardo, Hartmann Stuefer, Herbert Thaler

Eintragung | Iscrizione | Registration

Druckschrift eingetragen mit Nr. 24/97 vom 17.12.1997 beim Landesgericht Bozen.

Pubblicazione iscritta al Tribunale di Bolzano n. 24/97 del 17/12/1997.

Publication registered with n° 24/97 of 17/12/1997 at the Court of Bolzano.

Nachdruck | Riproduzione | Reprint

Auszugsweiser oder vollständiger Nachdruck mit Quellenangabe gestattet.

Riproduzione parziale o totale autorizzata con citazione della fonte.

Partial or total reproduction is authorised provided the source is acknowledged.

Bemerkung | Annotazione | Remark

Die veröffentlichten Daten sind nur teilweise validiert.

I dati pubblicati sono solo parzialmente validati.

The published data are only partially validated.

Wie man diesen Report zitiert | Come citare questo report | How to cite this report

Nadalet R., Dinale R., Ghetta S., Maraldo L., Pernter M., Tollardo M., Stuefer H., Thaler H. (2023). *HydroReport 10/2021*, Autonomous Province of Bolzano - South Tyrol.