



Wilhelmina Kinderziekenhuis

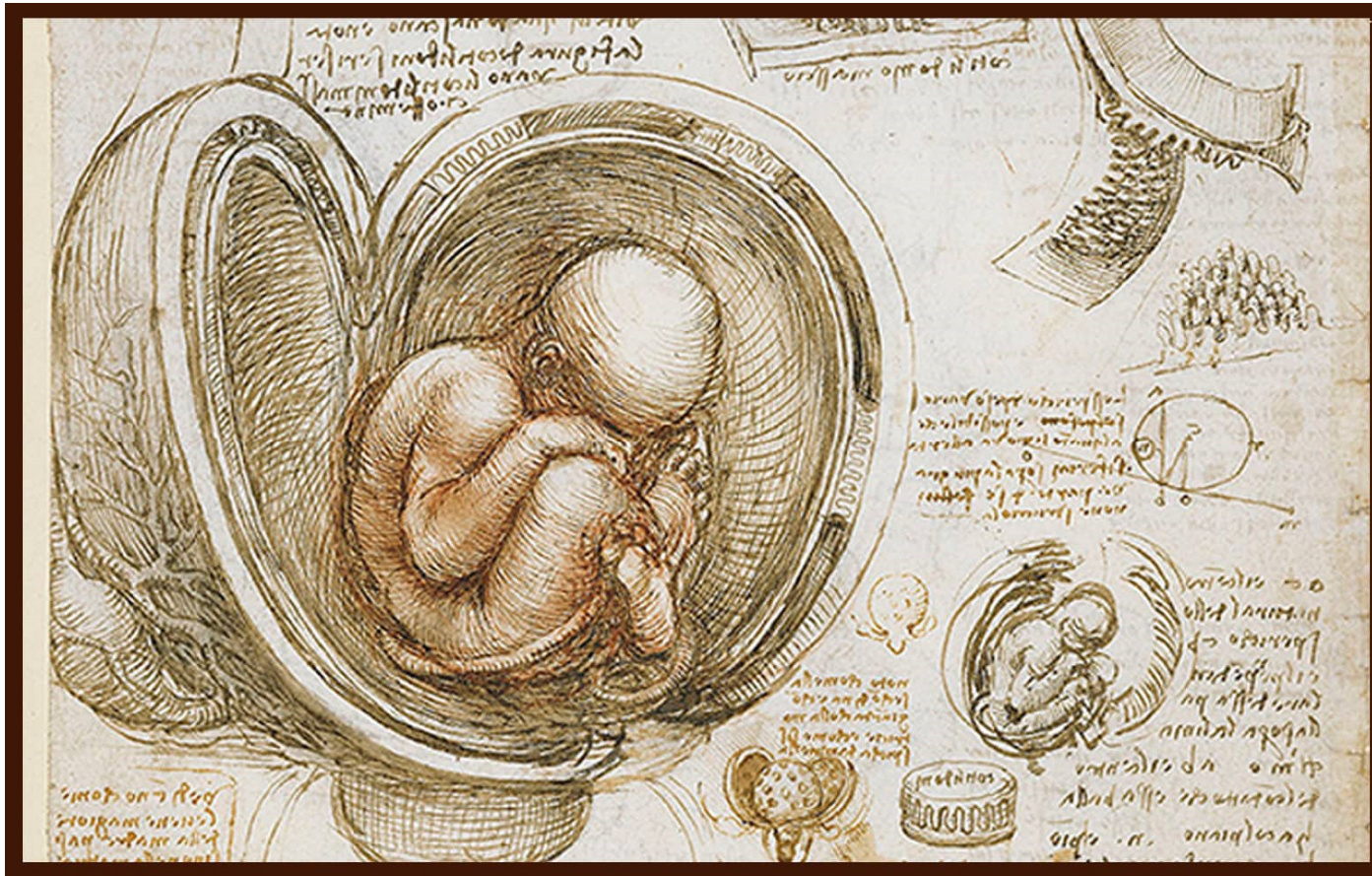
7e 'Utrecht Sessions' over aangeboren hartafwijkingen:

# De aortaboog

Henriëtte ter Heide  
Kindercardioloog



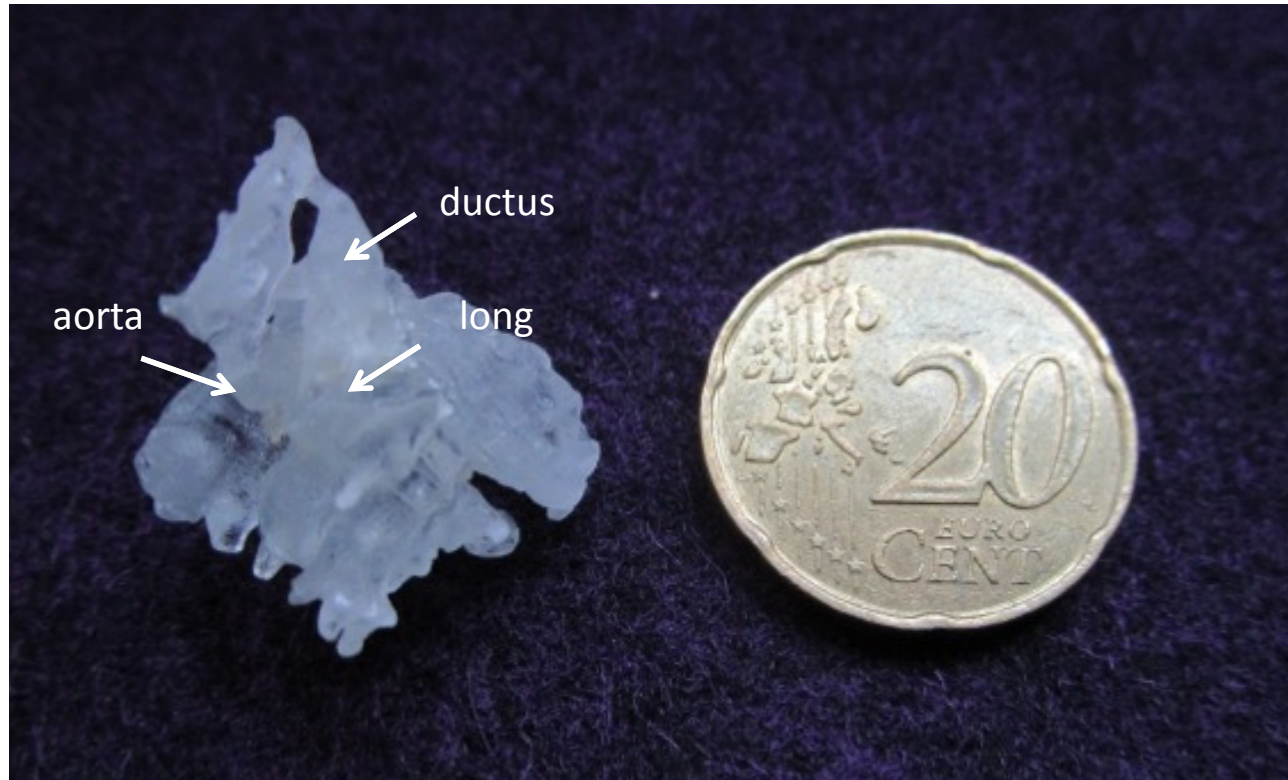
Universitair Medisch Centrum Utrecht



*Studies of a Fetus in the Womb, a drawing by Leonardo da Vinci, c. 1510 to 1512*



**Wilhelmina Kinderziekenhuis**



# Hartafwijkingen

- Geboortecijfer 2018: 168.525 (CBS)
  - ✓ 0.6% aangeboren hartafwijkingen:
    - ✓ - ongeveer 1030 kinderen per jaar
  - ✓ 1/3: geringe afwijking
  - ✓ 1/3: matige afwijking
    - ✓ - heeft of eenvoudige ingreep of medicamenteuze ondersteuning
  - ✓ 1/3: ernstige afwijking
    - ✓ - alleen palliatieve of risicovolle chirurgie, letaal
- Aangeboren hartafwijkingen zijn de meest voorkomende aangeboren afwijkingen



## Geboorteprevalentie aangeboren hartafwijkingen

5-jaarsgemiddelde over de periode 2013-2017

Type afwijking	Per 10.000 levend geborenen	Jaarlijks aantal afwijkingen
Alle hartafwijkingen	60	1.030
Alle ernstige hartafwijkingen	19	330
Ventrikelseptumdefect	32	560
Atriumseptumdefect	6	110
Pulmonaire klepafwijkingen	5	90
Coarctatio van de aorta	3	55
Transpositie van de grote vaten	4	70
Tetralogie van Fallot	2	30
Aortaklep stenose	3	35
Hypoplastisch linkerhart	1	20
Totaal aangeboren afwijkingen	230	3.900

Bron: Eurocat (2019)

Jaarlijks aantal: Er is hier aangenomen dat er jaarlijks in Nederland 175.000 kinderen geboren worden



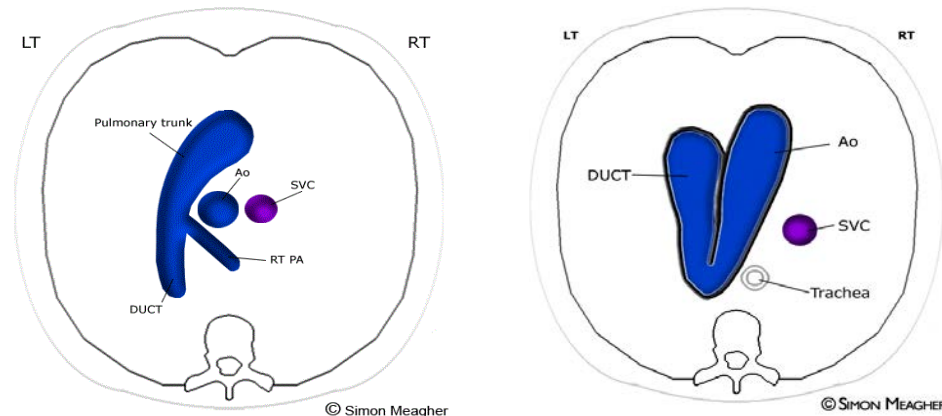
# Nationaal prenataal screeningsprogramma

2007:

Introductie nationaal prenataal screeningsprogramma

2012:

Toevoegen uitstroombanen en three vessel view



# Structureel echoscopisch onderzoek

## *Hart*

- ✓ Beoordeling positie en grootte hart
- ✓ Beoordeling 4-kamerbeeld: symmetrie, identificatie beide AV-kleppen, crux
- ✓ Beoordeling aorta uit linker ventrikel, longslagader uit rechter ventrikel
- ✓ Beoordeling kruising van de grote vaten
- ✓ Beoordeling 'three vessel view'

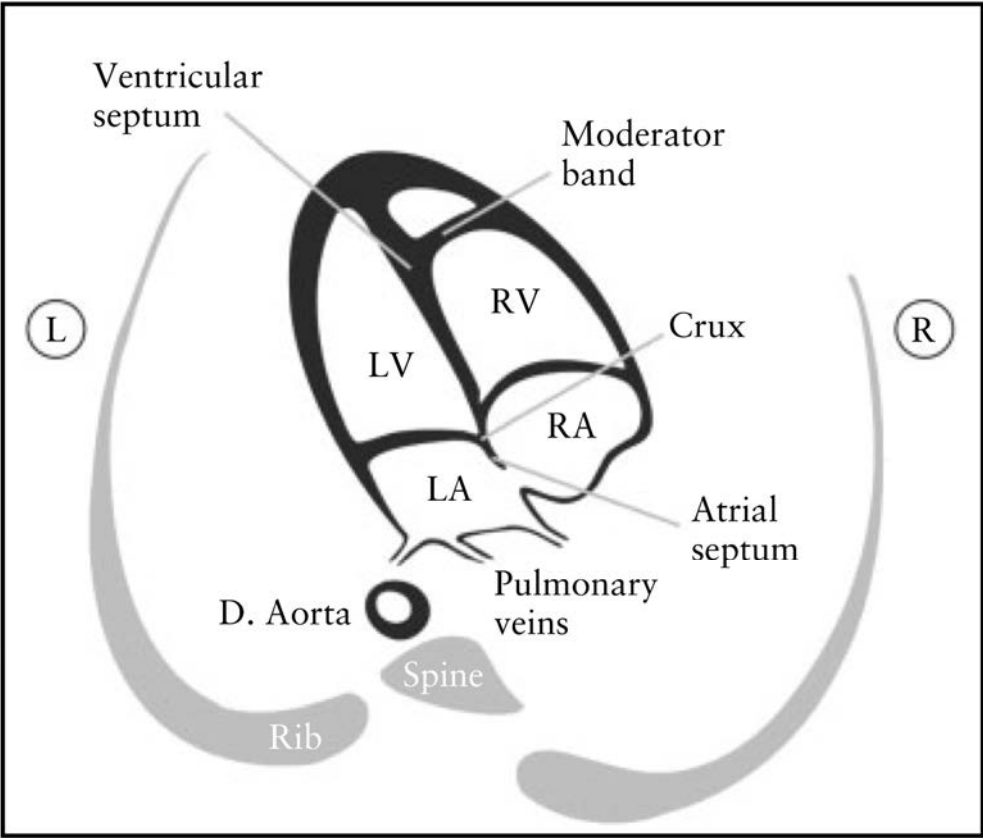


# Structureel echoscopisch onderzoek

4- kamerbeeld: >50% sensitiviteit

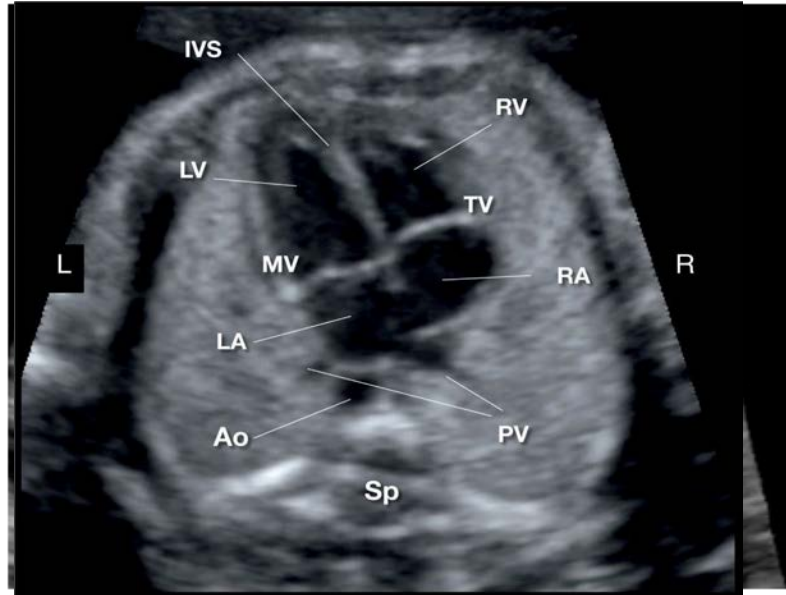
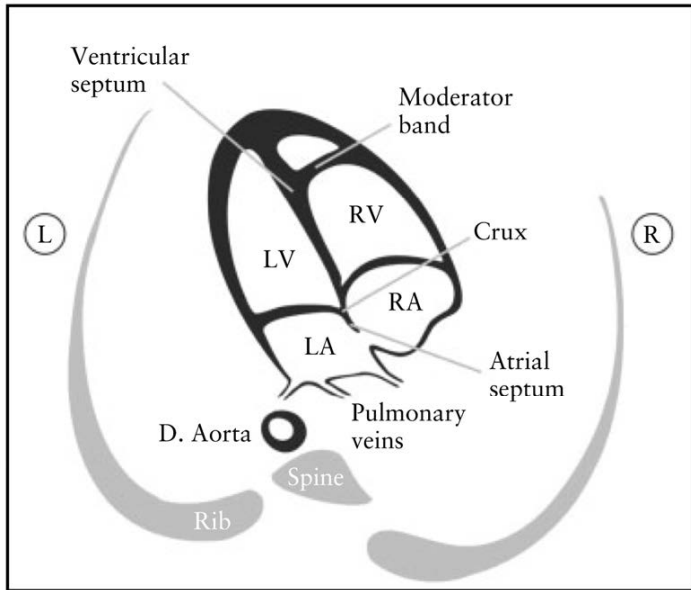
✓ *HLHS, tricuspidaalklep atresie, AVSD*





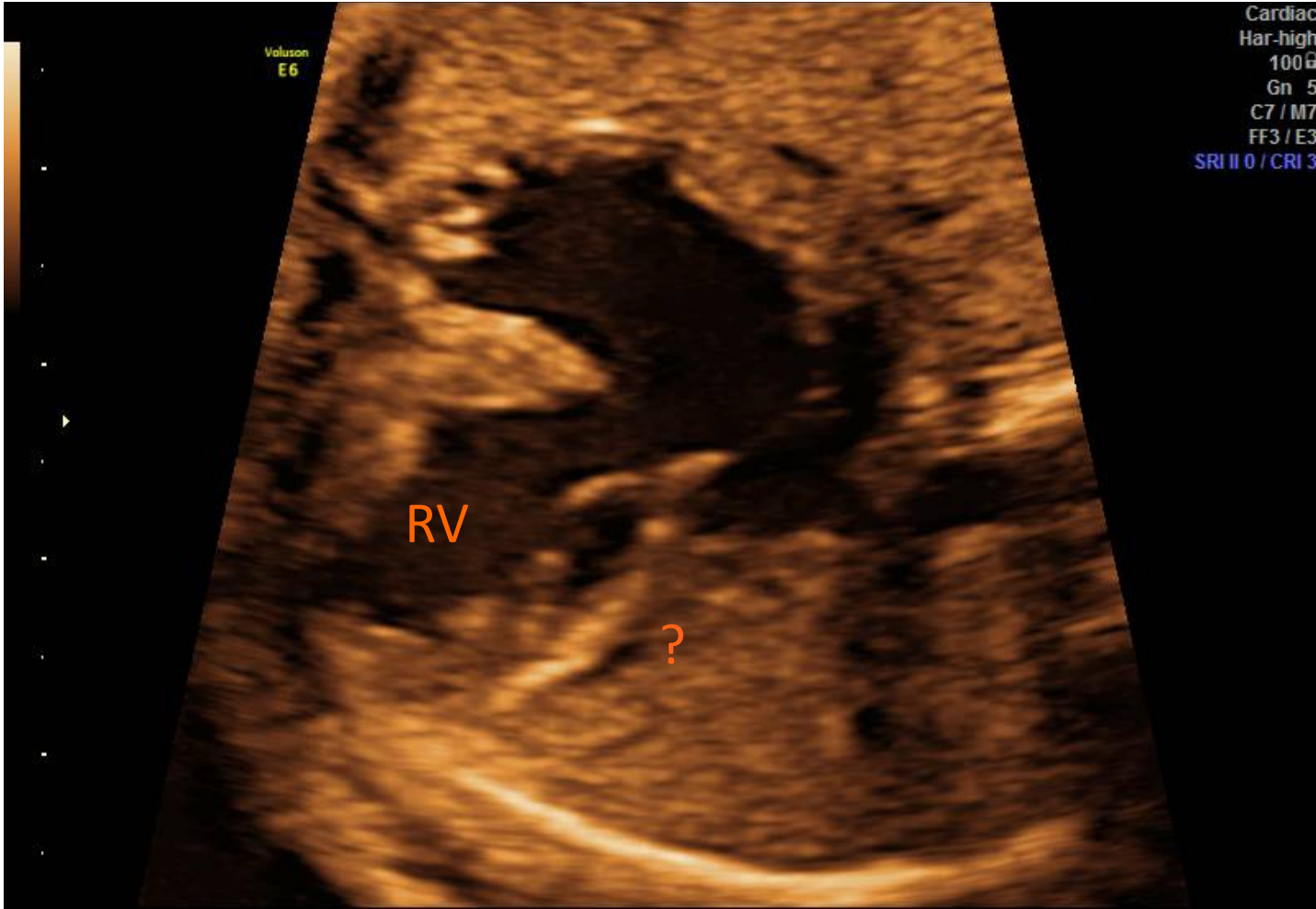
4 chamber view





4 chamber view





# Structureel echoscopisch onderzoek

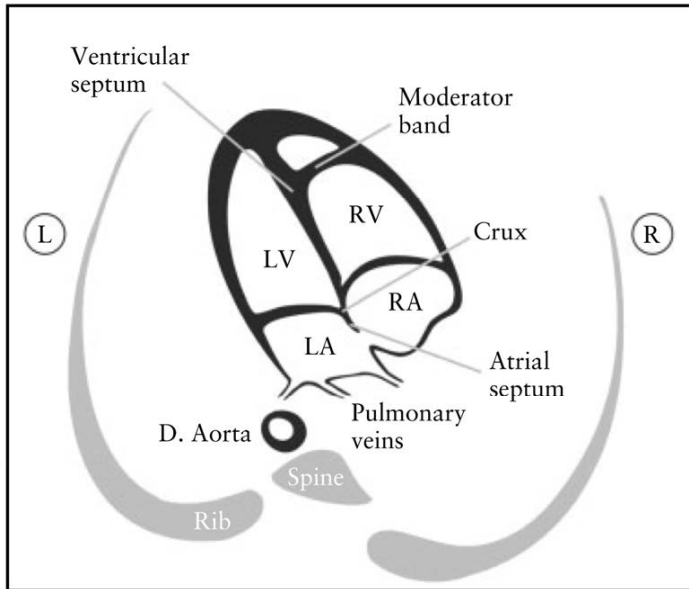
4- kamerbeeld: >50% sensitiviteit

✓ *HLHS, tricuspidaalklep atresie, AVSD*

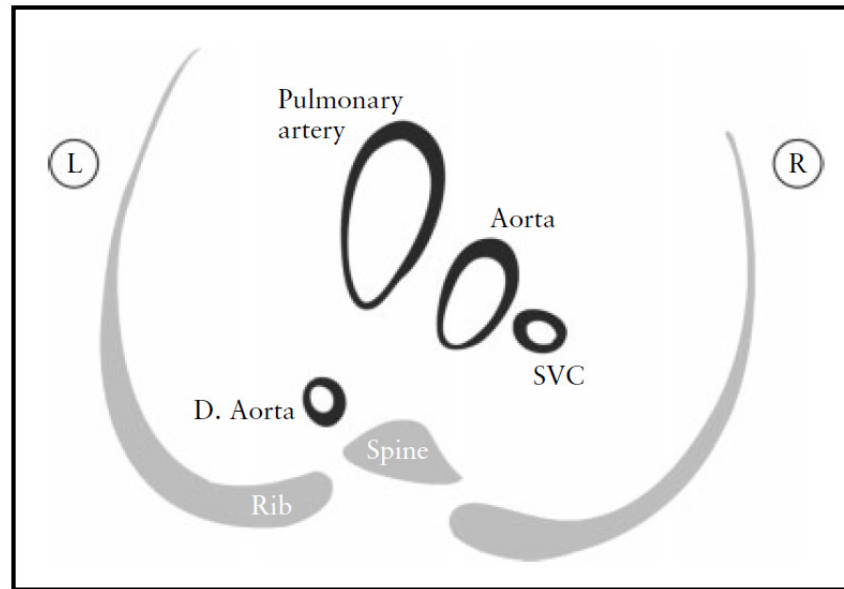
+ Uitstroombanen en 'three vessel view' : 90% sensitiviteit

✓ *TOF, DORV, Truncus arteriosus, TGA*





4 chamber view

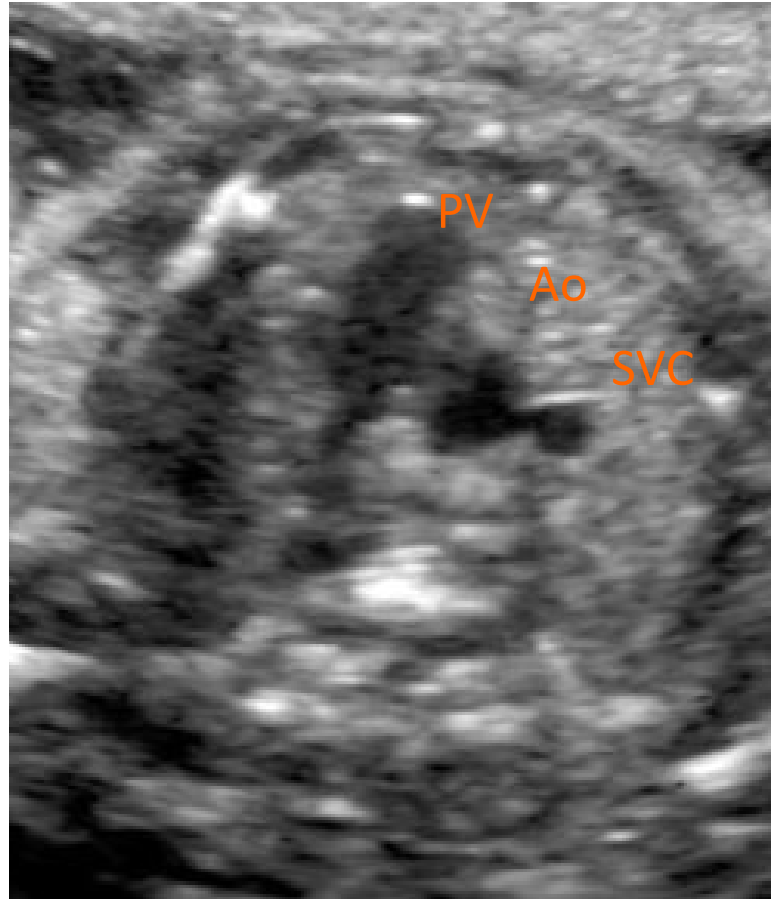


3 vessel view





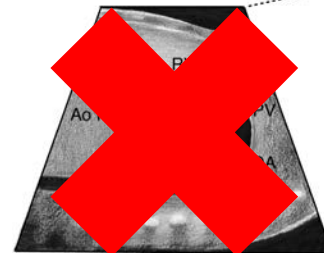
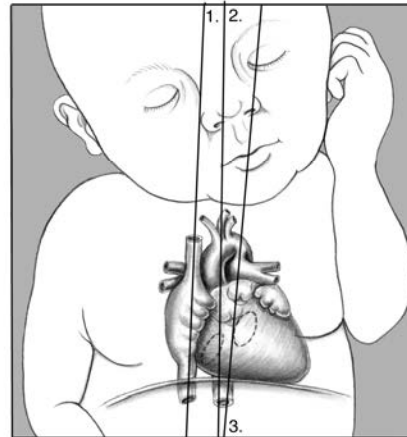
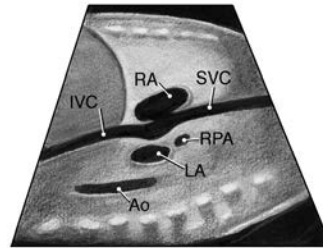
4 chamber view



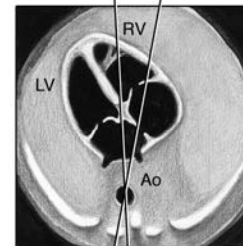
3 vessel view



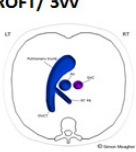


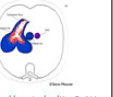

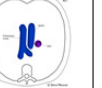

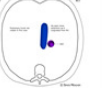




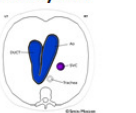
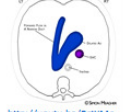







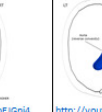


# En de bogen dan?



Ductal Arch Plane Aortic Arch Plane



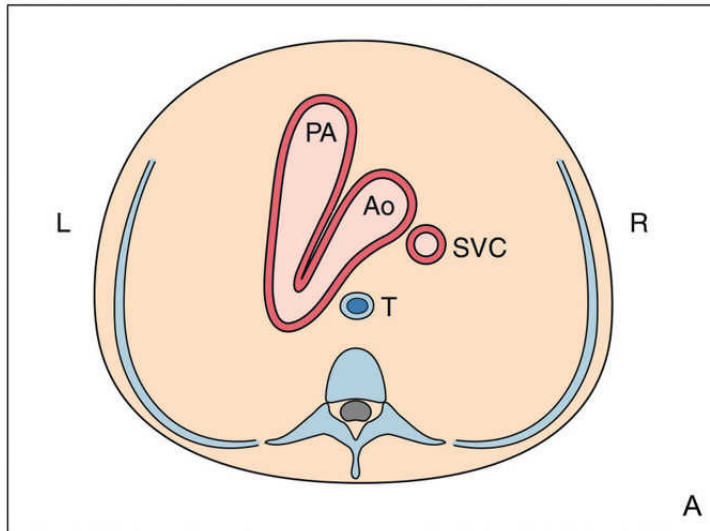
# En de bogen dan?

<p><b>ROFT/ 3vv</b></p>  <p><a href="http://youtu.be/LUj6QmxfC8g">http://youtu.be/LUj6QmxfC8g</a>  <a href="http://youtu.be/6NGw5yc2hk">http://youtu.be/6NGw5yc2hk</a></p>	<p><b>Main subtypes:</b> (VSD/PA/MAPCA-see rare cardiac table)</p> <p><b>Pulmonary stenosis (75% cases)</b></p>  <p><a href="http://youtu.be/a2V_wry-rlw">http://youtu.be/a2V_wry-rlw</a>  <a href="http://youtu.be/ePb5f0E1X8E">http://youtu.be/ePb5f0E1X8E</a></p> <p><b>Pulmonary atresia (20%)</b></p>  <p><a href="http://youtu.be/gk-wzLU0oo00">http://youtu.be/gk-wzLU0oo00</a></p> <p><b>Absent (dysplastic/ring) pulmonary valve syndrome (5% cases)</b></p>  <p><a href="http://youtu.be/KesSs1LHsg">http://youtu.be/KesSs1LHsg</a>  <a href="http://youtu.be/-Ma3Wv3HPEg">http://youtu.be/-Ma3Wv3HPEg</a></p>			 <p><a href="http://youtu.be/7H9H8VKuW4M">http://youtu.be/7H9H8VKuW4M</a></p>	 <p><a href="http://youtu.be/HkaIXDwfn2A">http://youtu.be/HkaIXDwfn2A</a></p>	 <p>No video</p>	 <p><a href="http://youtu.be/GdM-DZ4XCLY">http://youtu.be/GdM-DZ4XCLY</a></p>	 <p><a href="http://youtu.be/Es3rmvE0N3dk">http://youtu.be/Es3rmvE0N3dk</a></p>	 <p><a href="http://youtu.be/ik-0k8FyEE_U">http://youtu.be/ik-0k8FyEE_U</a></p>	 <p><a href="http://youtu.be/Ksu7ACooWYU">http://youtu.be/Ksu7ACooWYU</a></p>	 <p><a href="http://youtu.be/6KnyeXnKM7M">http://youtu.be/6KnyeXnKM7M</a></p>
<p><b>Transverse arches/ 3vT</b></p>  <p><a href="http://youtu.be/9DmGcINag8Q">http://youtu.be/9DmGcINag8Q</a></p>	 <p><a href="http://youtu.be/Pc2XMePwP68">http://youtu.be/Pc2XMePwP68</a></p>	 <p><a href="http://youtu.be/jpD-wj9j8TE">http://youtu.be/jpD-wj9j8TE</a>  <a href="http://youtu.be/vGdivvopfic">http://youtu.be/vGdivvopfic</a></p>	 <p><a href="http://youtu.be/hrfacsPfaE">http://youtu.be/hrfacsPfaE</a></p>	 <p><a href="http://youtu.be/Aqm-52Q8G3Q">http://youtu.be/Aqm-52Q8G3Q</a></p>	 <p><a href="http://youtu.be/Qtjprj8MQ0">http://youtu.be/Qtjprj8MQ0</a></p>	 <p>No video</p>	 <p><a href="http://youtu.be/cpPT4pNkUw">http://youtu.be/cpPT4pNkUw</a></p>	 <p><a href="http://youtu.be/orF1bEjgnI4">http://youtu.be/orF1bEjgnI4</a></p>	 <p><a href="http://youtu.be/Q2wP_gIWoZl">http://youtu.be/Q2wP_gIWoZl</a></p>	 <p><a href="http://youtu.be/5mJ7qvTde0">http://youtu.be/5mJ7qvTde0</a></p>	 <p><a href="http://youtu.be/6KnyeXnKM7M">http://youtu.be/6KnyeXnKM7M</a></p>
<p><b>Overview videos</b></p> <p><a href="http://youtu.be/kfhzHFkLBOY">http://youtu.be/kfhzHFkLBOY</a>  <a href="http://youtu.be/86kIF5s1jk">http://youtu.be/86kIF5s1jk</a></p>	<p><a href="http://youtu.be/e02Q-RvEVQg">http://youtu.be/e02Q-RvEVQg</a></p>	<p><a href="http://youtu.be/8m-837otstFU">http://youtu.be/8m-837otstFU</a>  <a href="http://youtu.be/gvFnQ48vmeY">http://youtu.be/gvFnQ48vmeY</a></p>	<p><a href="http://youtu.be/Z21jOD8-VVg">http://youtu.be/Z21jOD8-VVg</a>  <a href="http://youtu.be/bRk-ogUvNWVg">http://youtu.be/bRk-ogUvNWVg</a></p>	<p><a href="http://youtu.be/6CXAcb6mvs">http://youtu.be/6CXAcb6mvs</a></p>	<p><a href="http://youtu.be/JGvc-m87D53k">http://youtu.be/JGvc-m87D53k</a></p>	<p>No video</p>	<p><a href="http://youtu.be/Zrmy8jNfCa">http://youtu.be/Zrmy8jNfCa</a></p>	<p><a href="http://youtu.be/C_KCgUJL0U">http://youtu.be/C_KCgUJL0U</a>  <a href="http://youtu.be/R4rClu414r">http://youtu.be/R4rClu414r</a>            Advanced clips:  <a href="http://youtu.be/6aXeD5t-kLM">http://youtu.be/6aXeD5t-kLM</a>  <a href="http://youtu.be/Ld5juOfr4U">http://youtu.be/Ld5juOfr4U</a></p>	<p><a href="http://youtu.be/sze1d6zmxM0">http://youtu.be/sze1d6zmxM0</a>            Advanced clips:  <a href="http://youtu.be/1AQLx45zb0">http://youtu.be/1AQLx45zb0</a>  <a href="http://youtu.be/IDeaJTEkqvE">http://youtu.be/IDeaJTEkqvE</a></p>	<p><a href="http://youtu.be/fcD20NkyQ2Q">http://youtu.be/fcD20NkyQ2Q</a></p>	<p><a href="http://youtu.be/3HiesopNX04">http://youtu.be/3HiesopNX04</a></p>

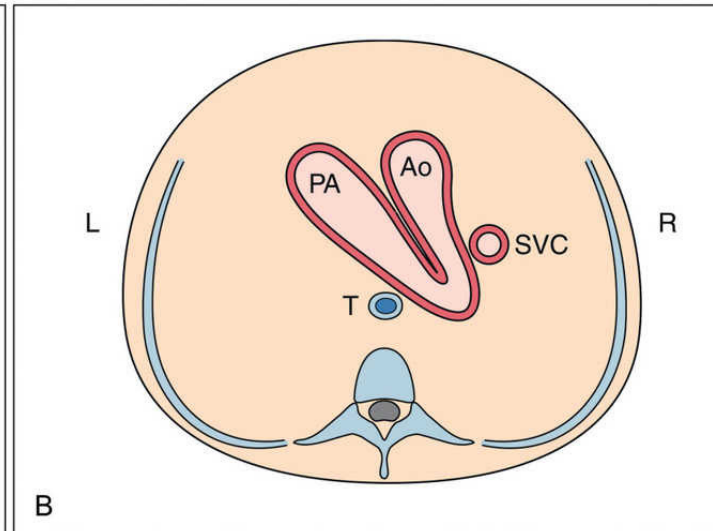




Linker boog, linker ductus



Rechter boog, rechter ductus

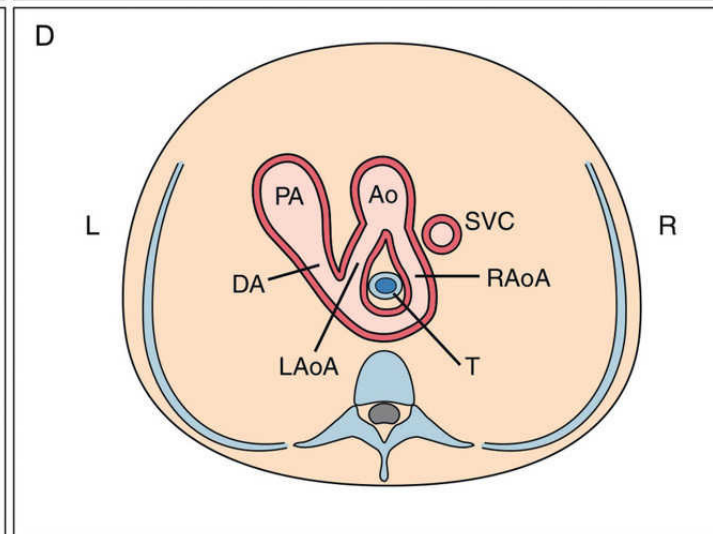
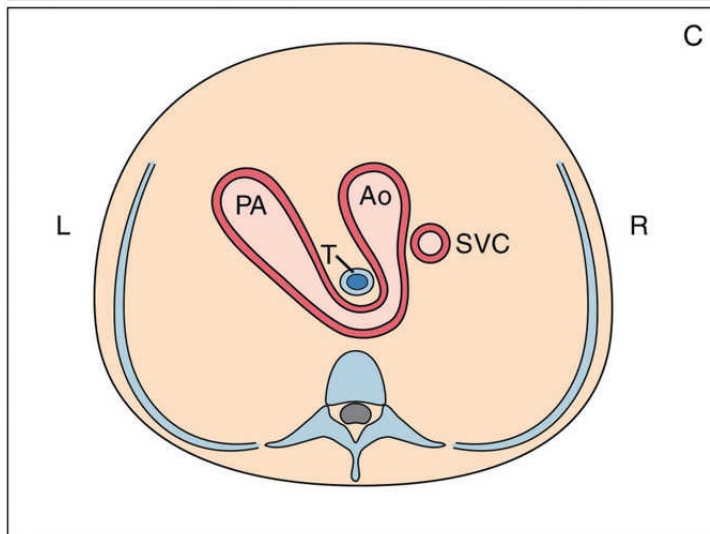


A

B

C

D

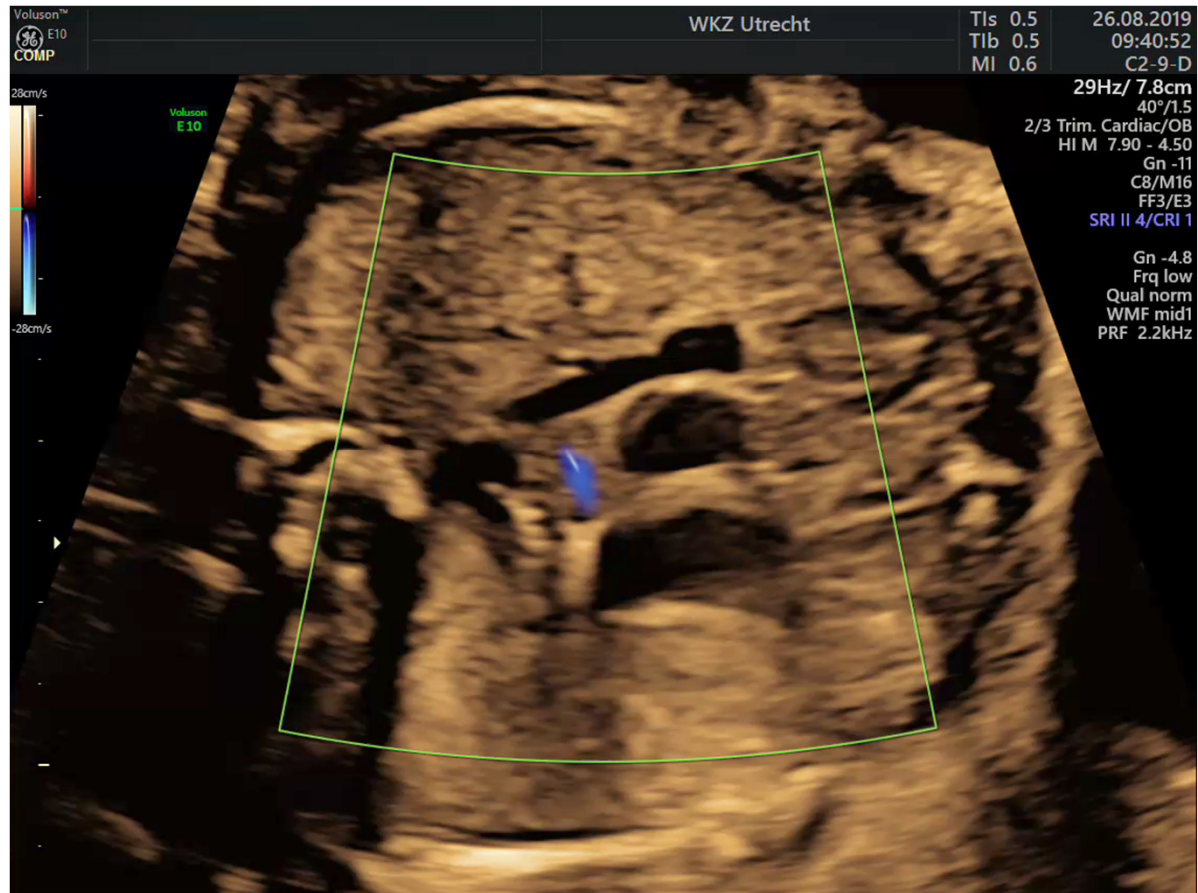


Rechter boog, linker ductus  
Vaak aberrante li subclavia

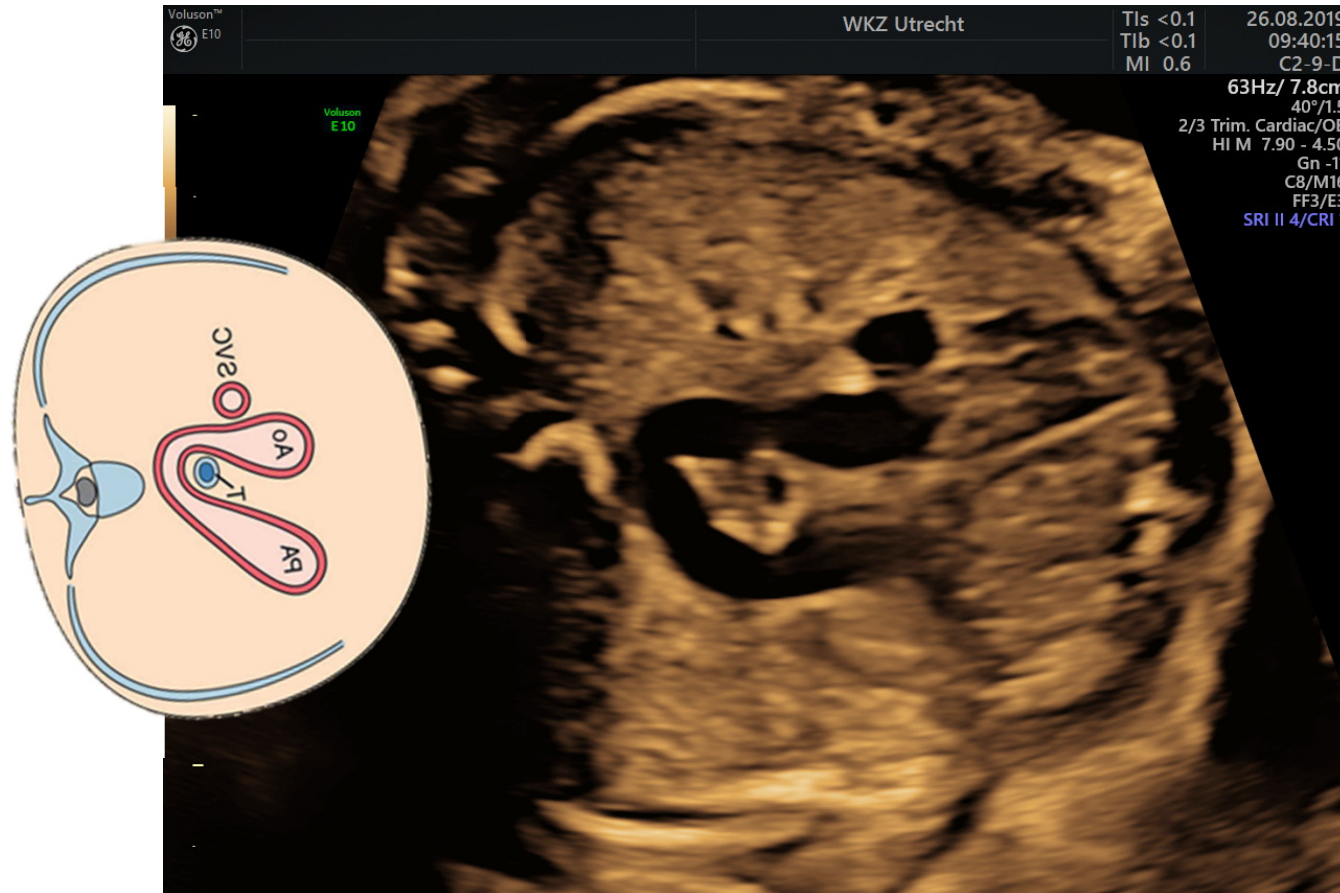
Dubbele aortaboog boog



# Rechter aortaboog



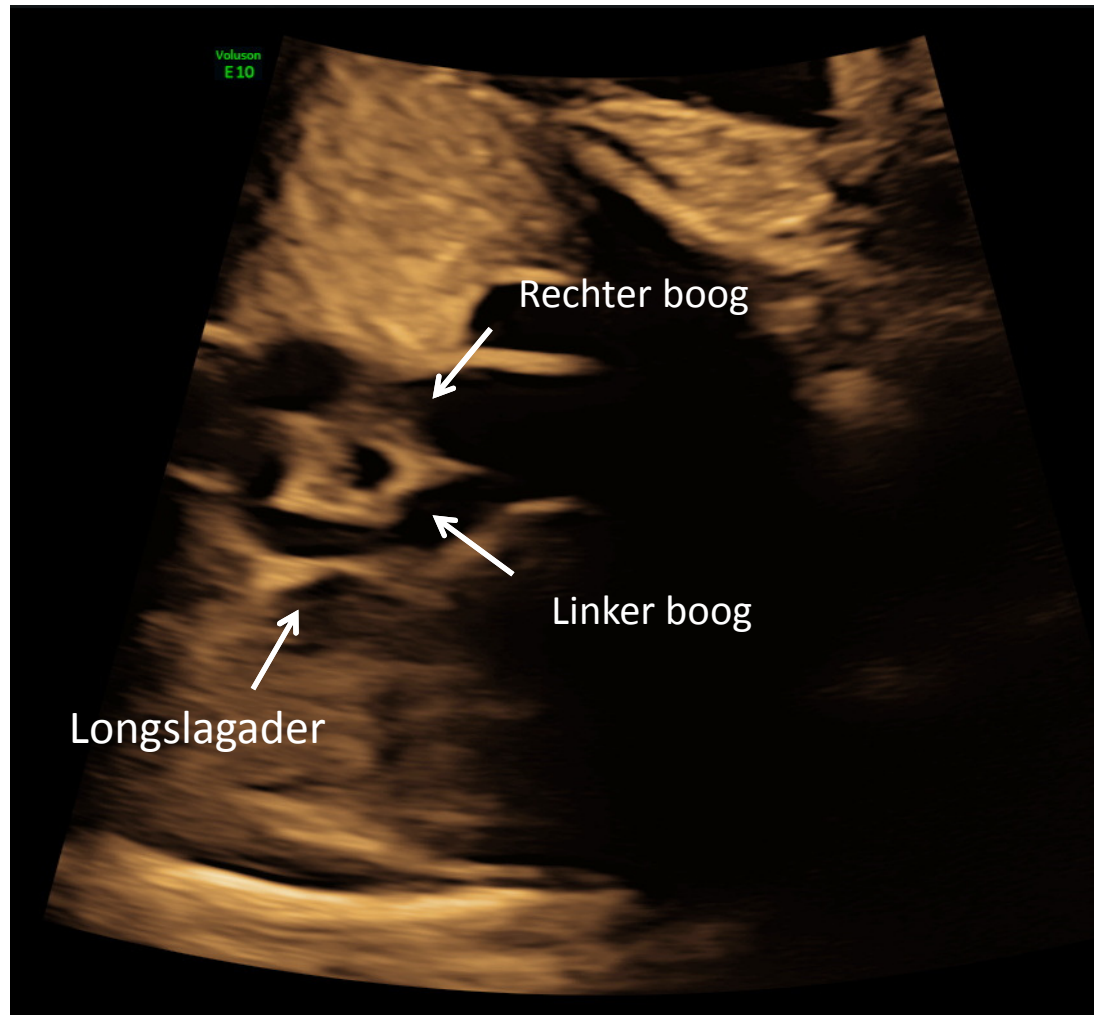
# Rechter aortaboog



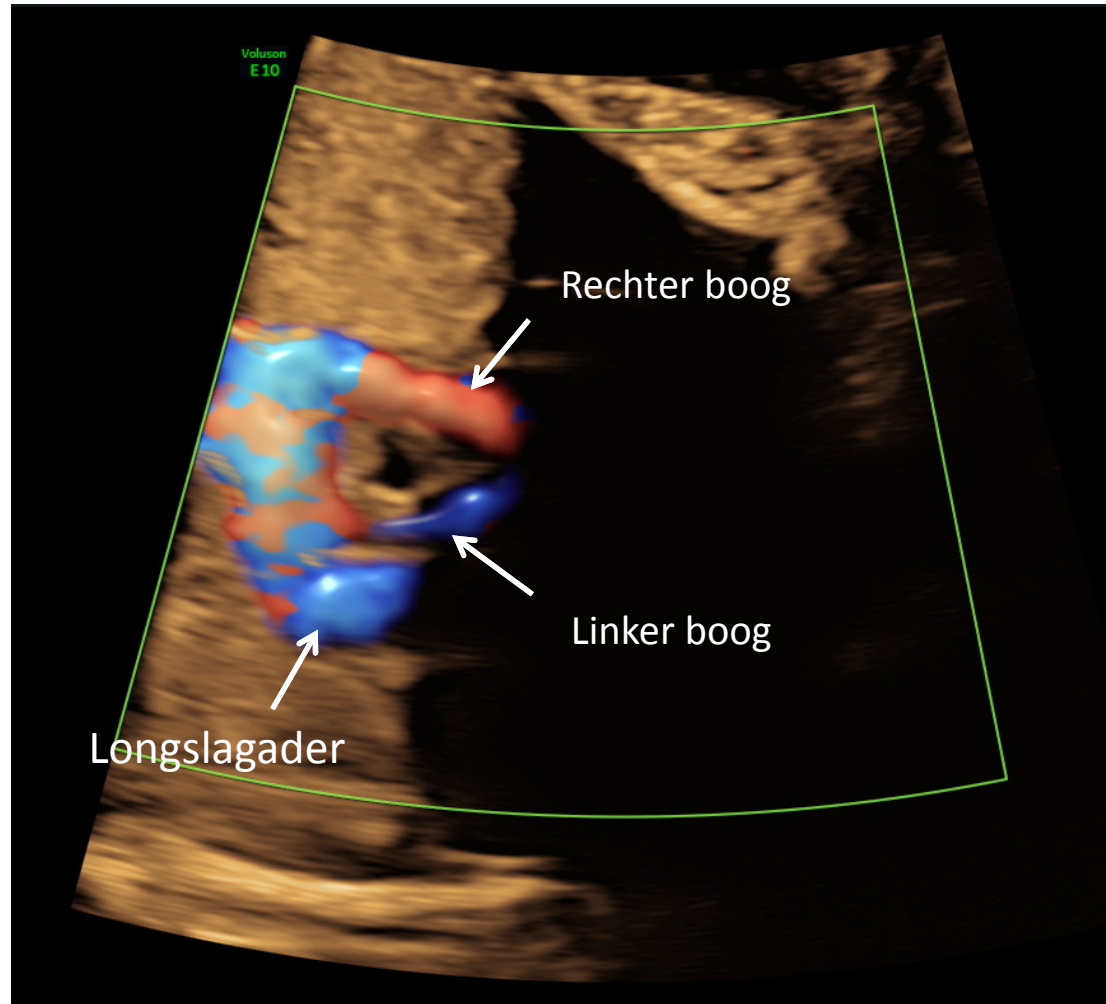
# Rechter aortaboog



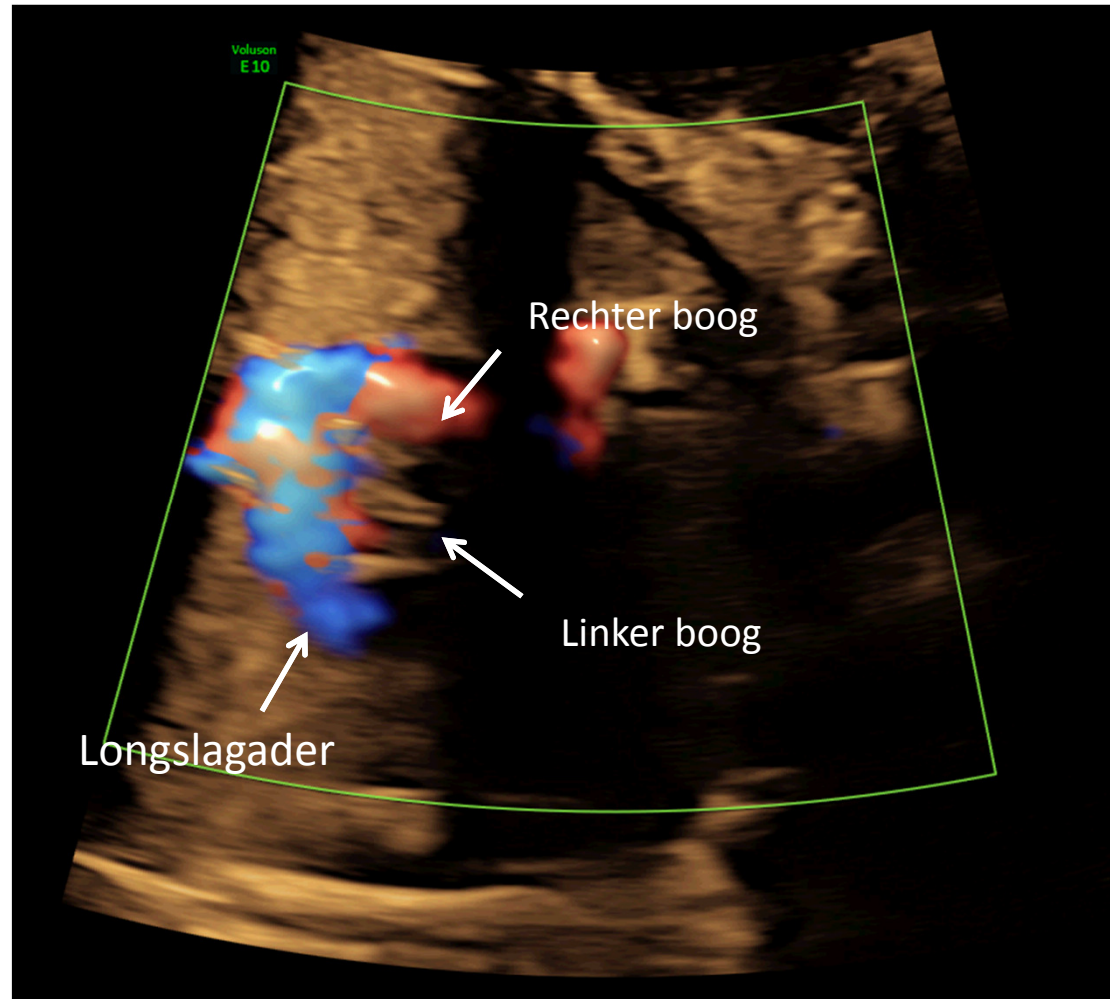
# Dubbele aortaboog



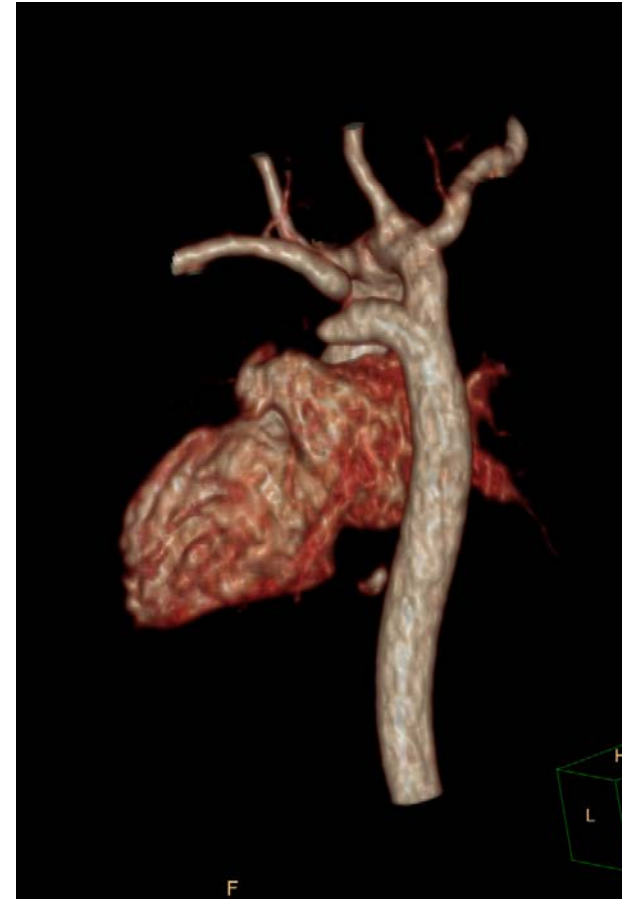
# Dubbele aortaboog



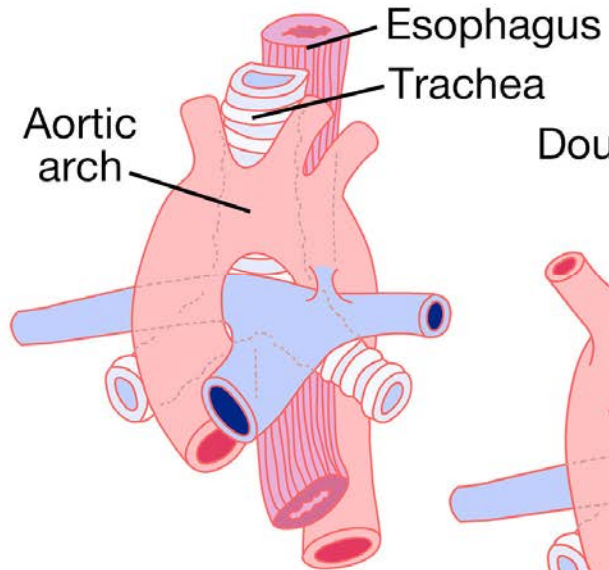
# Dubbele aortaboog



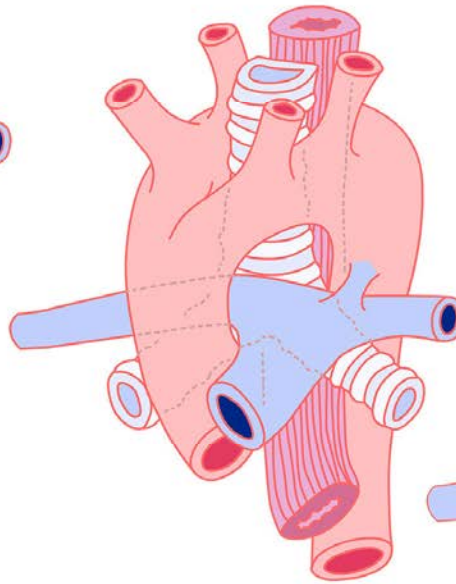
# Dubbele aortaboog



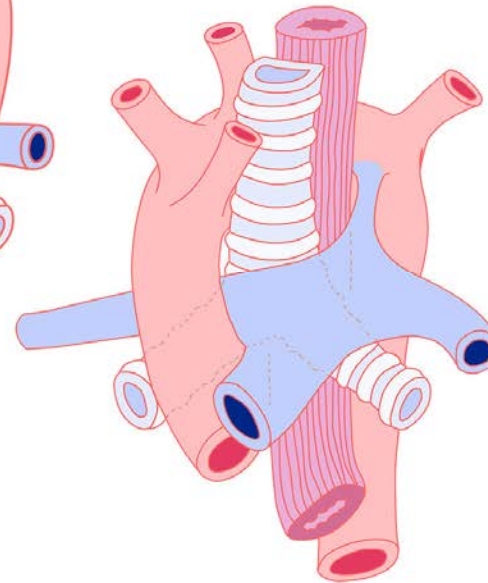
Normal Aortic Arch



Double Aortic Arch



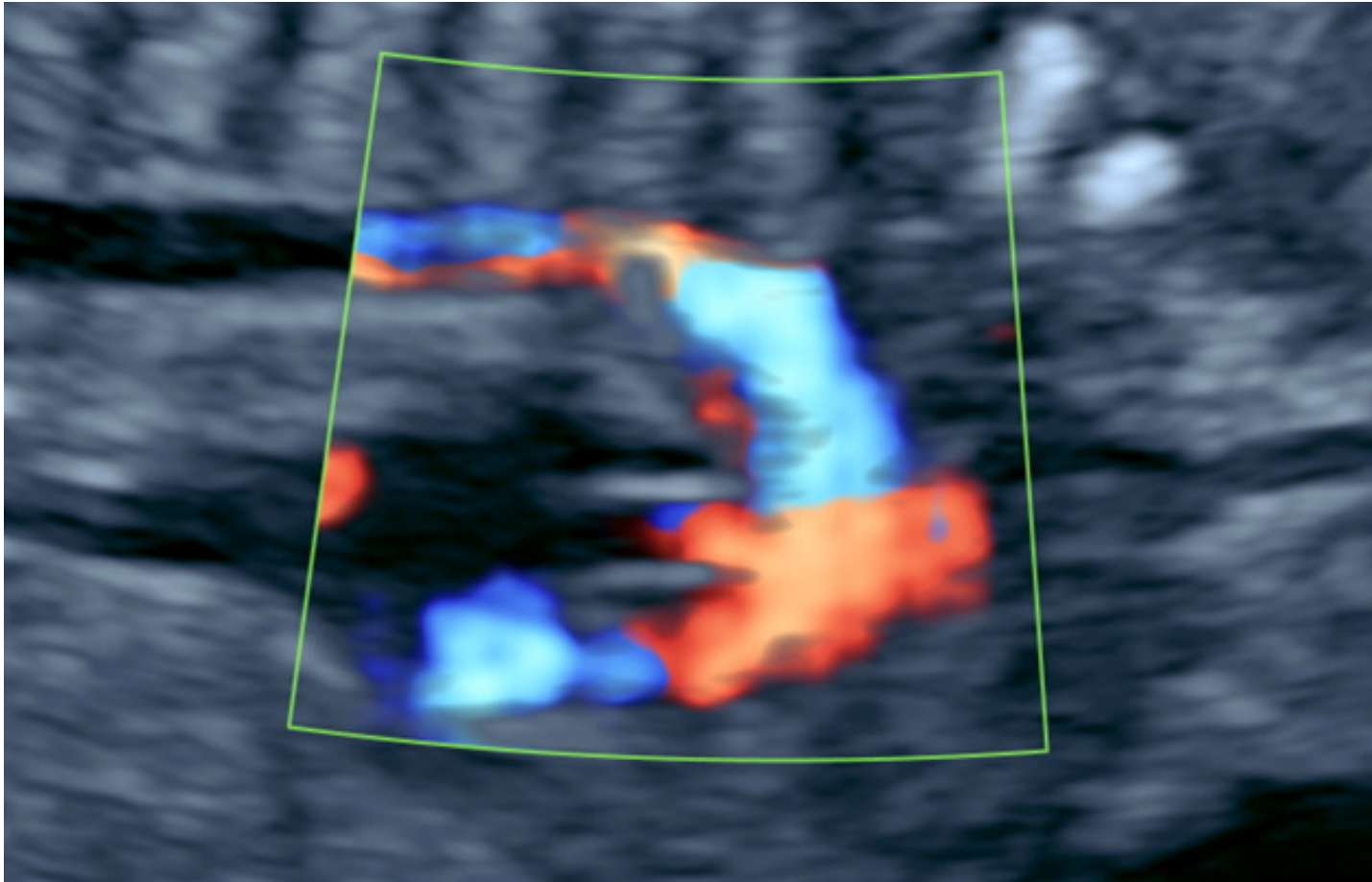
Right Aortic Arch



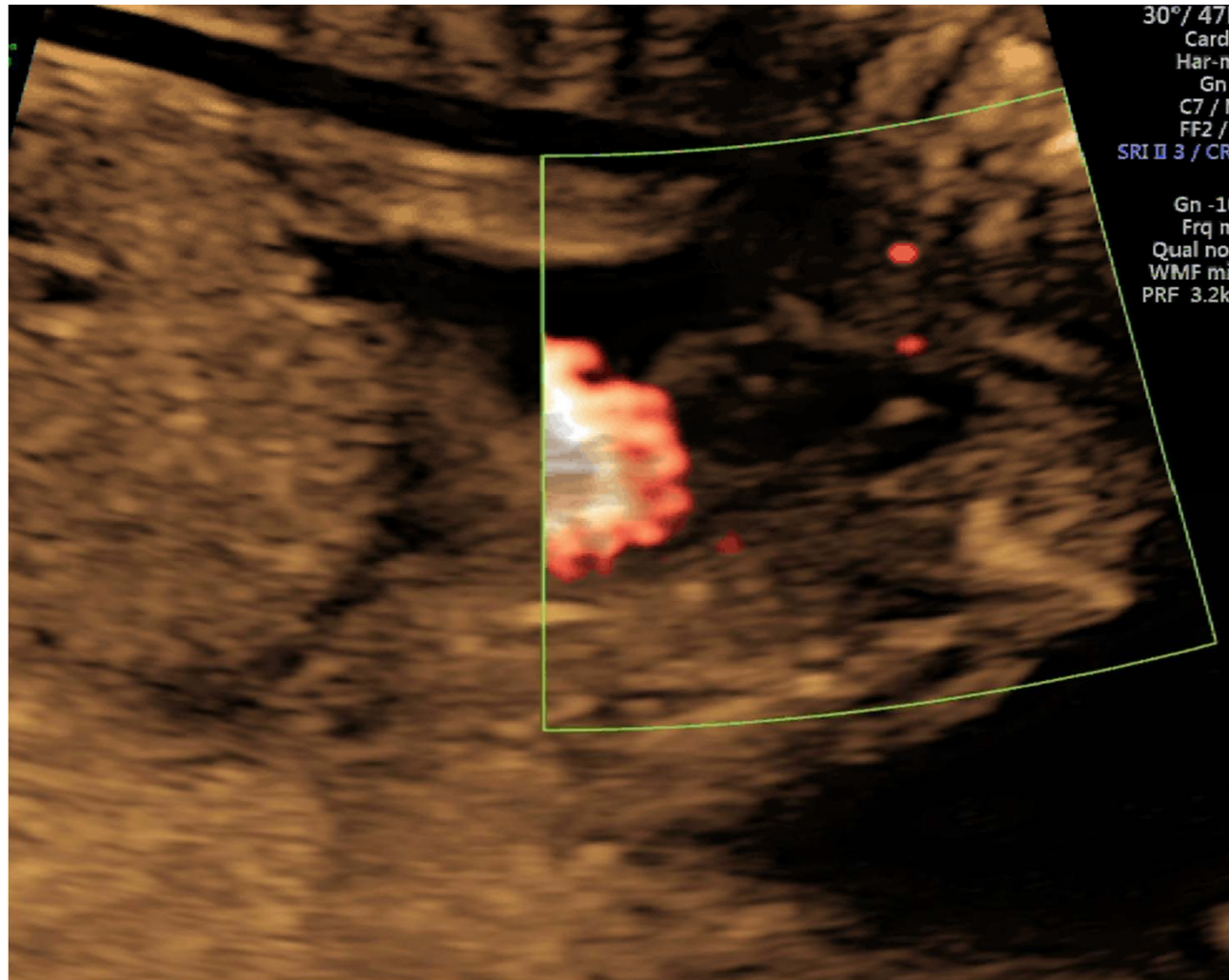
© medmovie.com



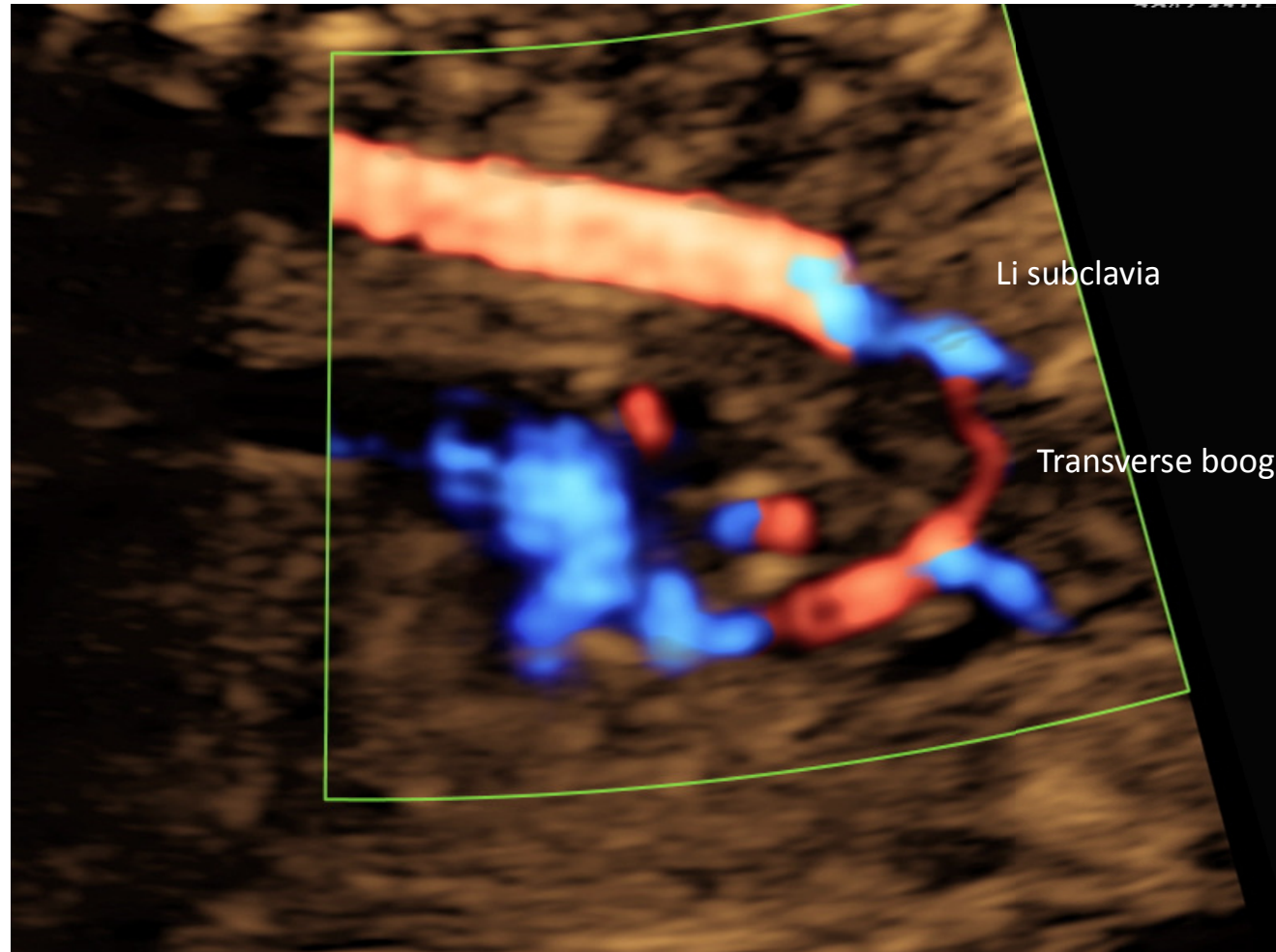
# Aortabooghypoplasie



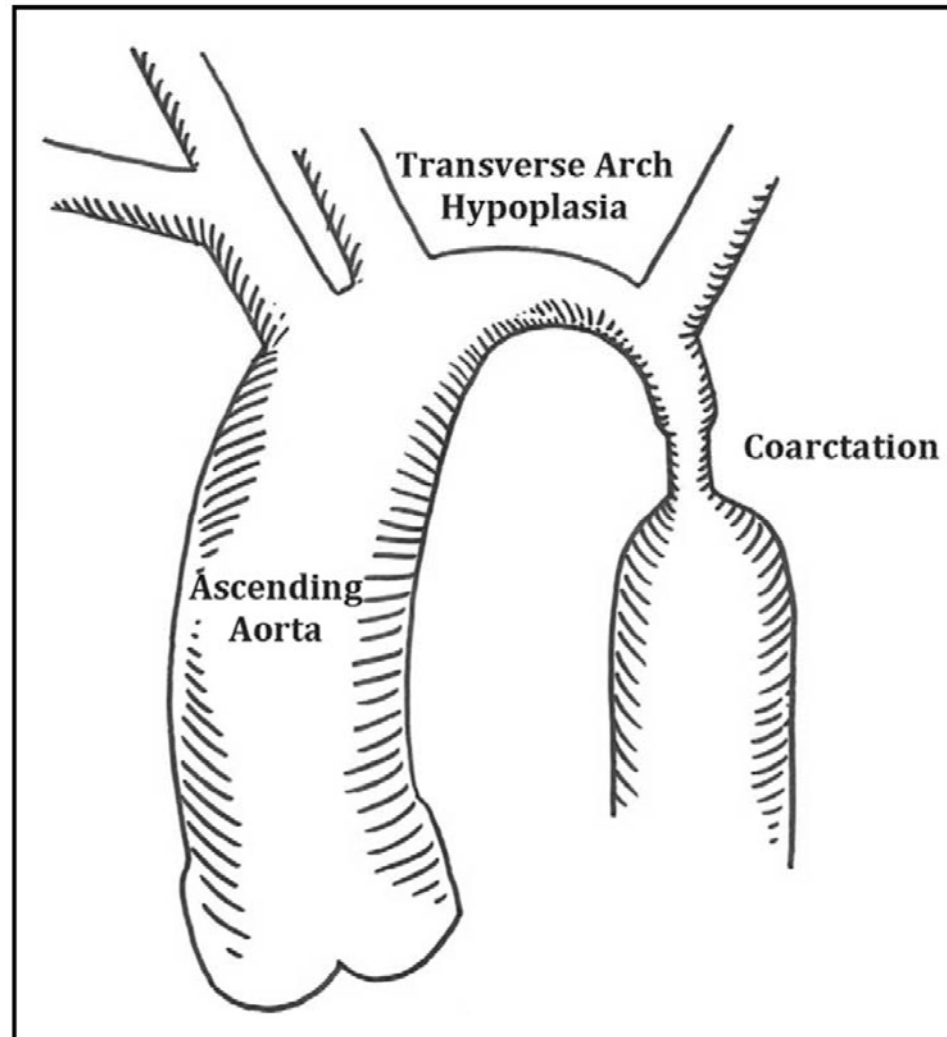
# Aortabooghypoplasie



# Aortabooghypoplasie



# Aortabooghypoplasie



# Wat kunnen we missen (en doen we)

Onze ogen zijn de ogen van de echoscopist en wat zij herkennen als afwijkend.

Aortaboogafwijkingen zijn lastig en antenataal niet altijd te herkennen

Veelbelovend: foetale cardiale MRI

*Futurestudie, start mei 2020*



