



Wilhelmina Kinderziekenhuis

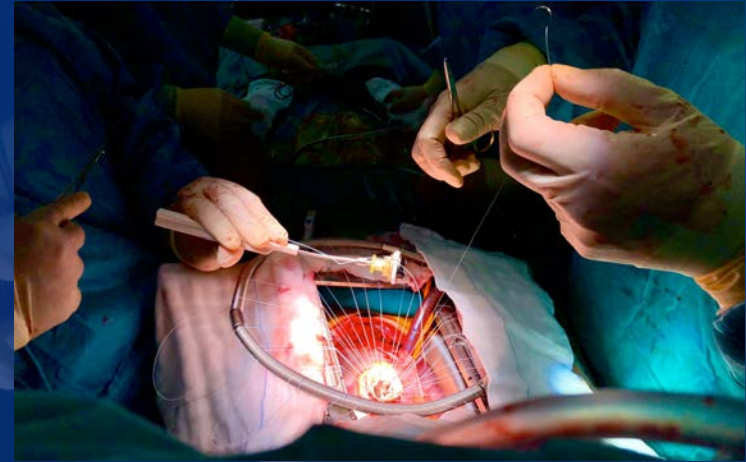
Houd je klep!

... wat als ze toch vervangen moet worden ?

Bram van Wijk & Gregor Krings



Centrum voor aangeboren Hartafwijking
UMC Utrecht



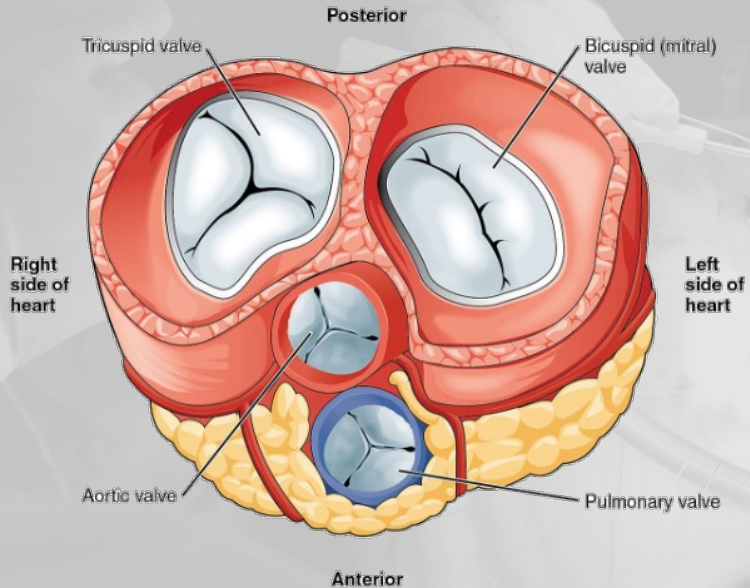
DISCLOSURES

No disclosures

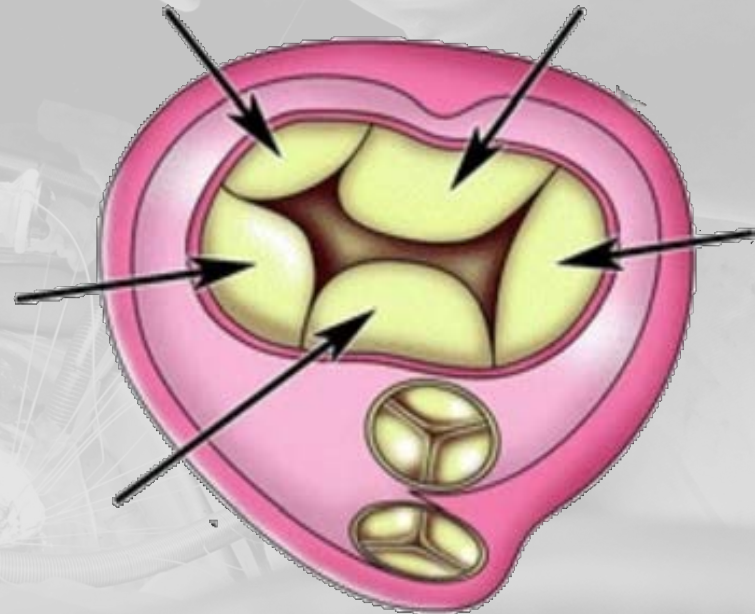


ANATOMIE AV KLEPPEN

Normaal



AVSD



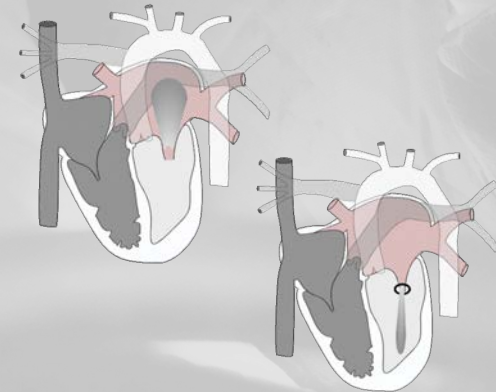
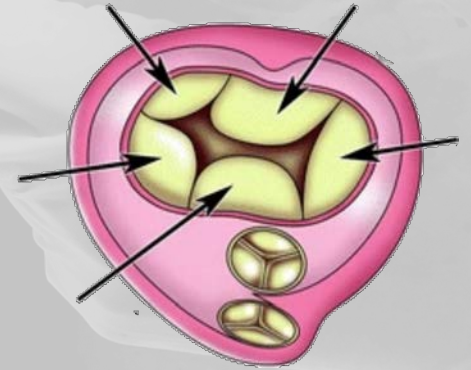
VAN PLASTIEK TOT VERVANGING

AV klep bij AVSD ...

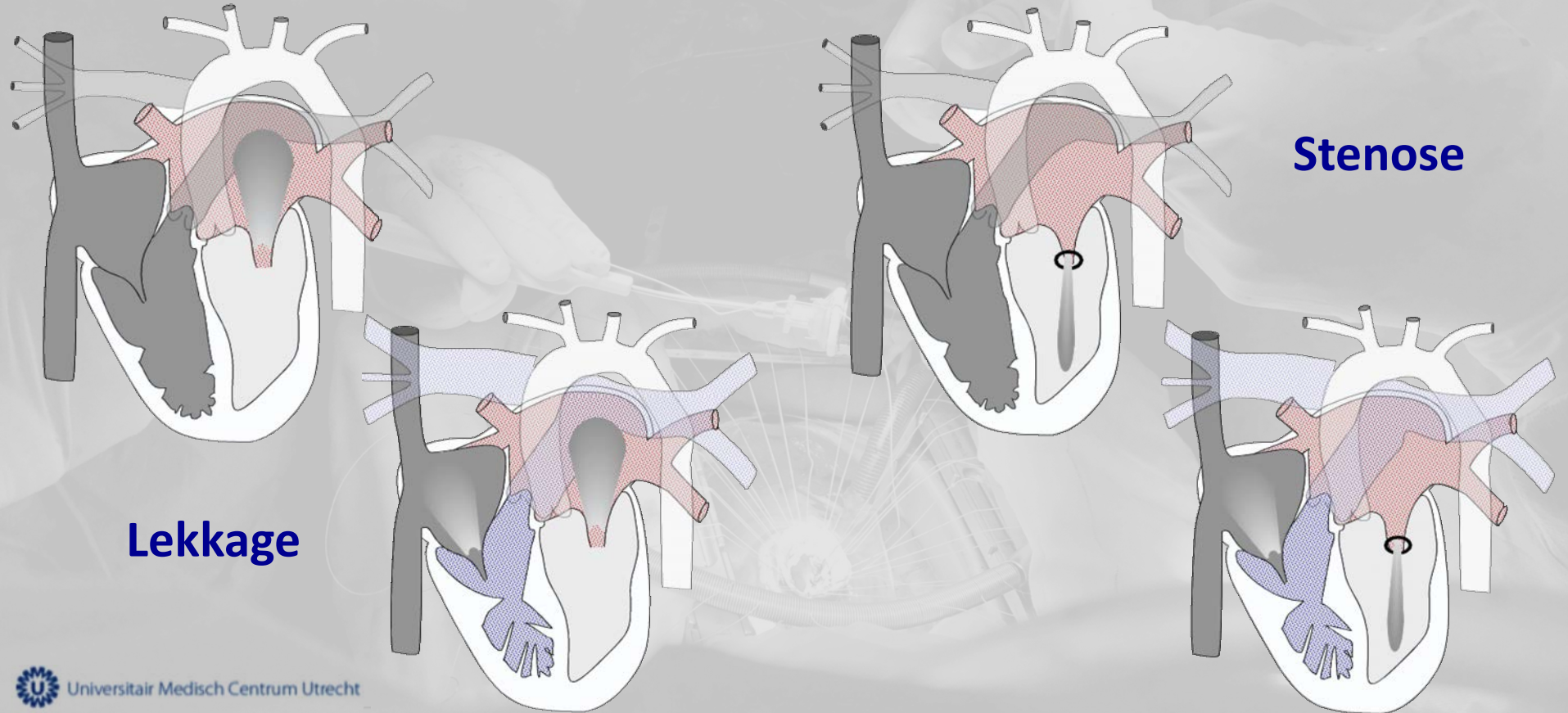
is geen Tricuspidaal of Mitraal klep ring-ring-oval
Het is een 2-in-1, een brug van een klep, 1-voor-2

behoud je klep ... zo lang mogelijk !

lekkage of vernauwing door plastic verbeteren

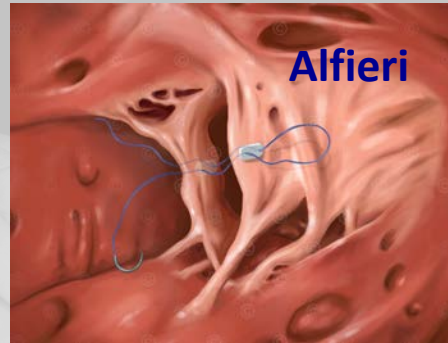
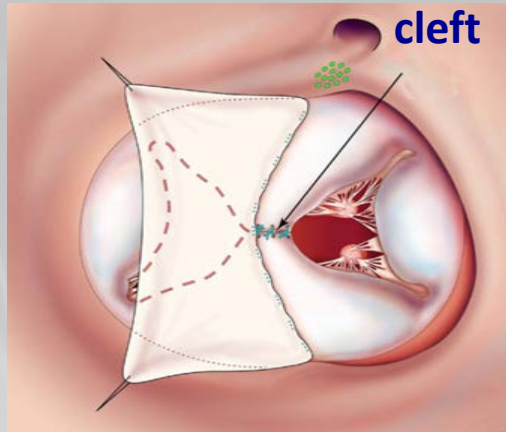


LEKKAGE EN STENOSE



OPTIES PLASTIEK

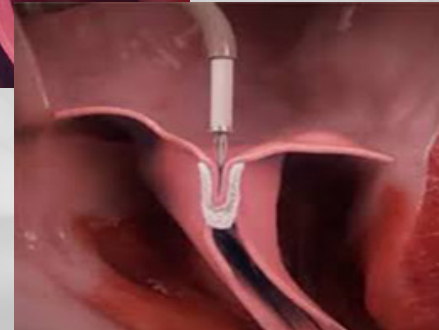
Chirurgisch



Catheter



Mitraclip



OPTIES VERVANGING CHIRURGISCH

Cruciaal

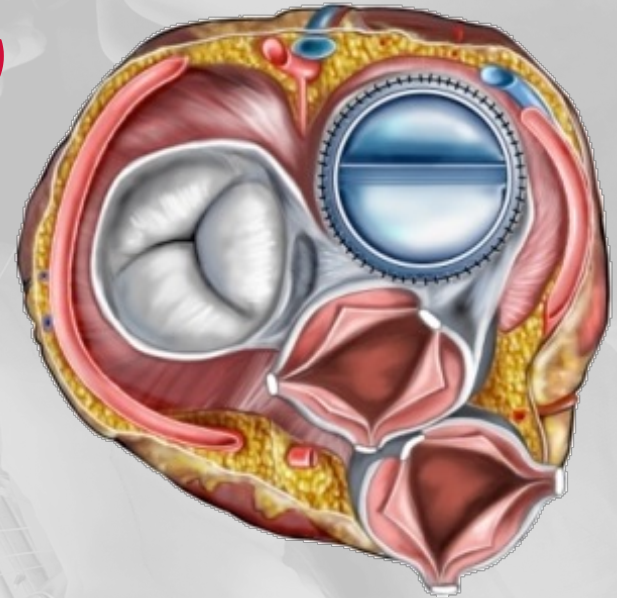
leeftijd en gewicht !

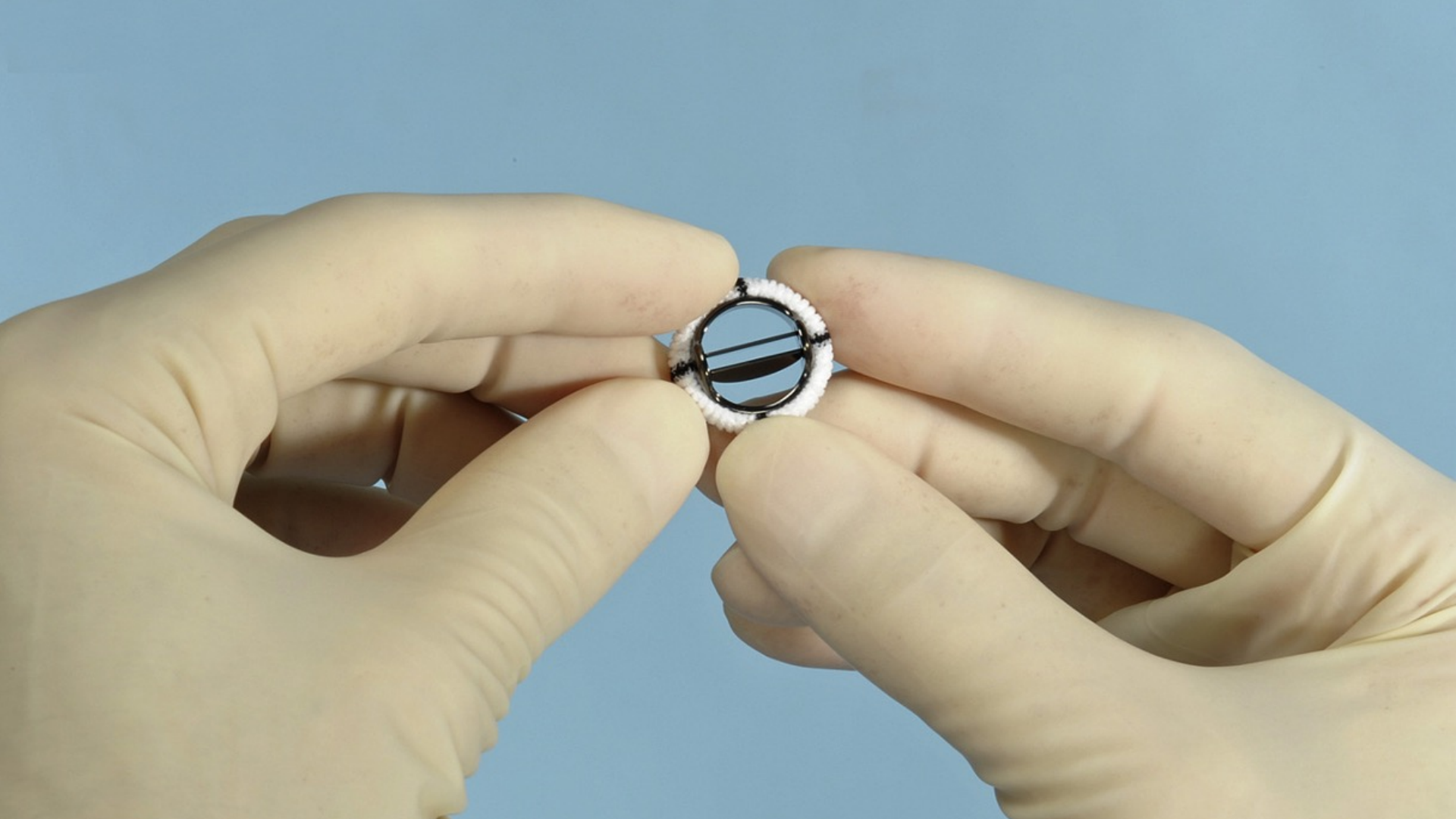
vroeg na 1^e correctie (5kg)

laat = volwassenen

bioklep (?)

kunstklep (15-33mm)





KUNSTKLEP

Masters Series 15 mm Mechanical Heart Valve

Model	Tissue Annulus Diameter (mm)	Geometric Orifice Area (cm ²)	Implant Height Open (mm)	Overall Height Open (mm)	Cuff OD (mm)
Aortic					
15 AHPJ-505	15	1.3	4.6	8.5	20
Mitral					
15 MHPJ-505	15	1.3	2.2	8.5	20

Masters Series Valves: HP Series Cuffed Valves

Model		Tissue Annulus Diameter (mm)	Geometric Orifice Area (cm ²)	Implant Height Open (mm)	Overall Height Open (mm)	Cuff OD (Standard / Expanded) (mm)
Standard Polyester Cuff	Expanded Polyester Cuff					
Aortic						
17 AHPJ-505	17 AEHPJ-505	17	1.6	2.9	9.9	23/24
19 AHPJ-505	19 AEHPJ-505	19	2.1	3.0	10.6	25/26
21 AHPJ-505	21 AEHPJ-505	21	2.6	3.3	12.0	27/28
23 AHPJ-505	23 AEHPJ-505	23	3.1	3.3	13.3	29/31
25 AHPJ-505	25 AEHPJ-505	25	3.8	3.8	13.7	31/33
27 AHPJ-505	27 AEHPJ-505	27	4.4	4.6	14.6	33/35
Mitral						
17 MHPJ-505	--	17	1.6	2.9	9.9	23/24
19 MHPJ-505	--	19	2.1	3.0	10.6	25/26
21 MHPJ-505	--	21	2.6	3.3	12.0	27/28
23 MHPJ-505	--	23	3.1	3.3	13.3	29/31
25 MHPJ-505	--	25	3.8	3.8	13.7	31/33
27 MHPJ-505	--	27	4.4	4.6	14.6	33/35

Kunstklep maten

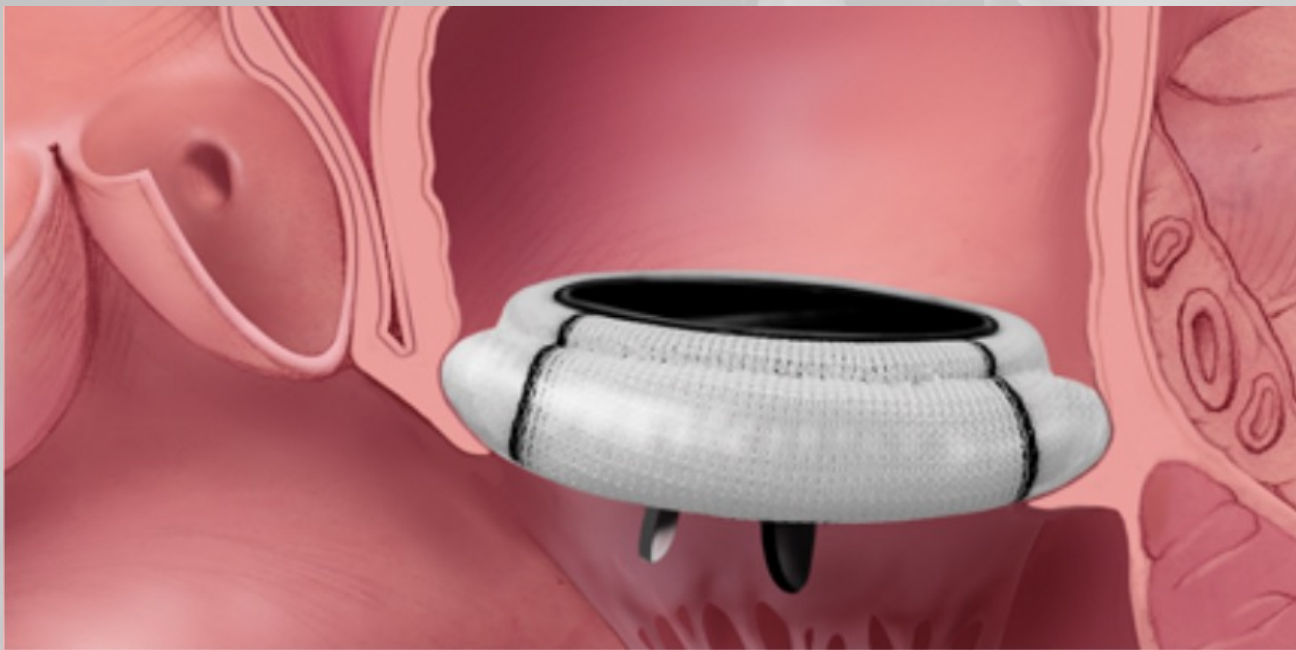
minimaal 15 mm binnen 20 mm buiten

maximaal 33 mm binnen 42 mm buiten

Masters Series Valves: Polyester Cuff

Model		Tissue Annulus Diameter (mm)	Geometric Orifice Area (cm ²)	Implant Height Open (mm)	Overall Height Open (mm)	Cuff OD (Standard / Expanded) (mm)
Standard Polyester Cuff	Expanded Polyester Cuff					
Aortic						
19 AJ-501	19 AECJ-502	19	1.6	3.3	9.9	22/23
21 AJ-501	21 AECJ-502	21	2.1	3.7	10.6	24/25
23 AJ-501	23 AECJ-502	23	2.6	4.4	12.0	26/27
25 AJ-501	25 AECJ-502	25	3.1	5.2	13.3	28/29
27 AJ-501	27 AECJ-502	27	3.8	5.7	13.7	31/32
29 AJ-501	29 AECJ-502	29	4.4	6.5	14.6	33/35
31 AJ-501	31 AECJ-502	31	5.1	7.2	15.9	35/37
Mitral						
19 MJ-501	19 MECJ-502	19	1.6	4.4	9.9	23/26
21 MJ-501	21 MECJ-502	21	2.1	4.5	10.6	26/29
23 MJ-501	23 MECJ-502	23	2.6	4.8	12.0	28/31
25 MJ-501	25 MECJ-502	25	3.1	5.2	13.3	30/33
27 MJ-501	27 MECJ-502	27	3.8	5.8	13.7	32/36
29 MJ-501	29 MECJ-502	29	4.4	6.6	14.6	35/38
31 MJ-501	31 MECJ-502	31	5.1	7.2	15.9	37/40
33 MJ-501	33 MECJ-502	33	5.1	8.2	15.9	39/42
35 MJ-501	--	35	5.1	8.2	15.9	40/NA
37 MJ-501	--	37	5.1	8.2	15.9	40/NA

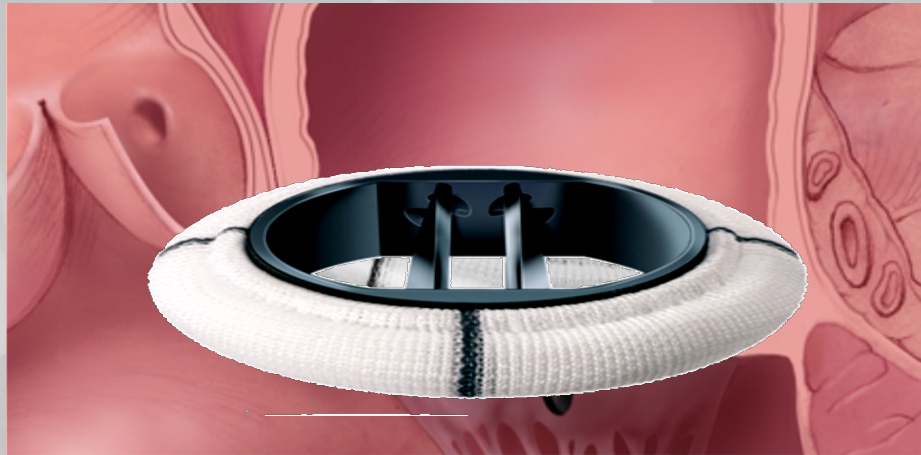
KUNSTKLEP



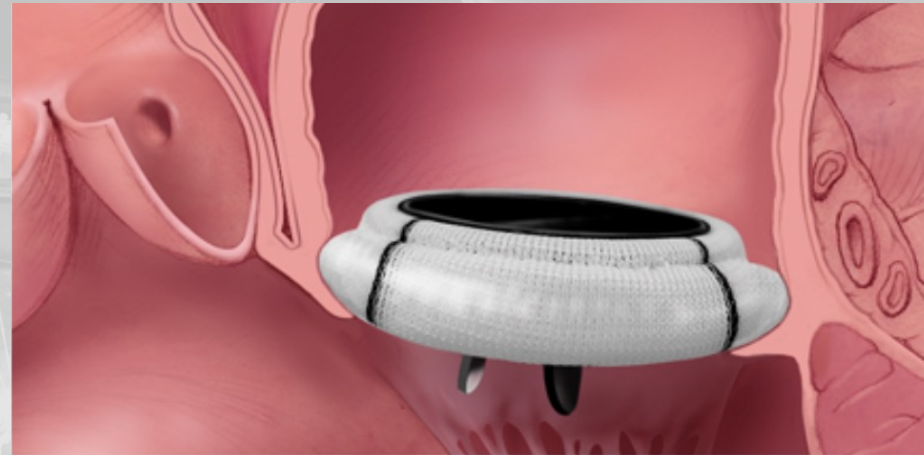
RICISO'S AV KLEPPEN



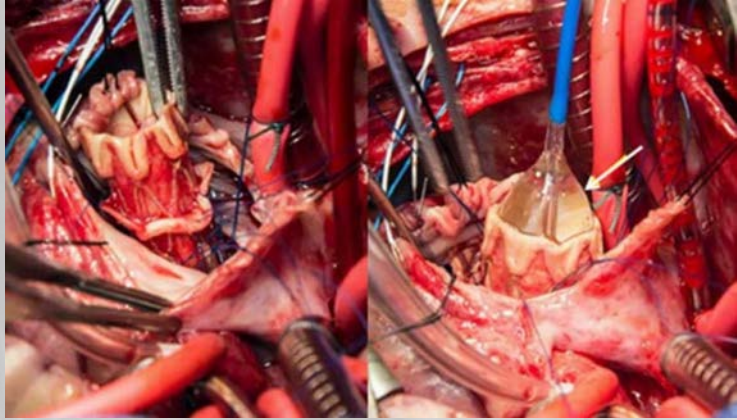
Kleine Kinderen



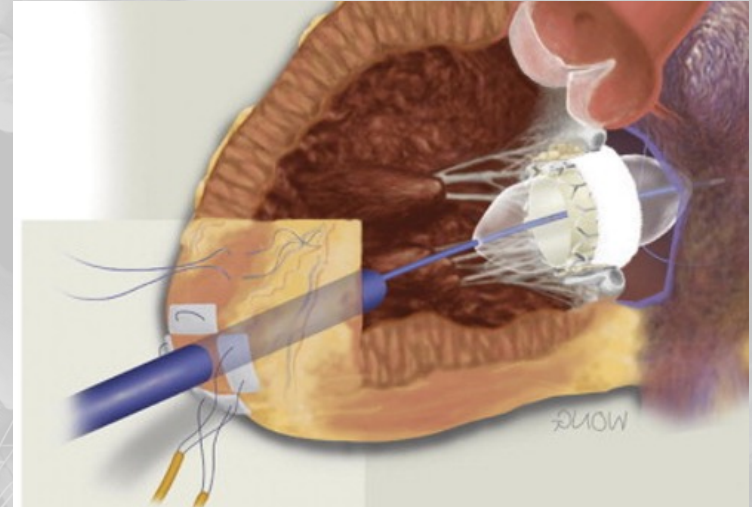
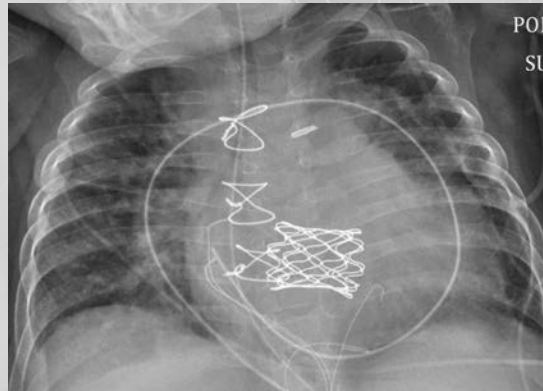
Volwassenen



OPTIES VERVANGING: HYBRIDE



Melody kind 5kg



transapical

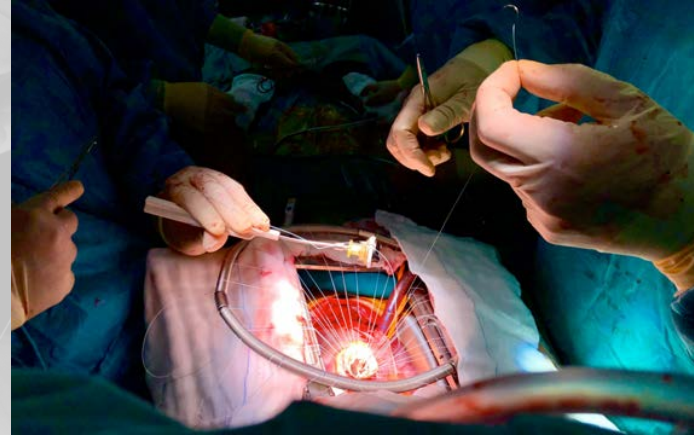
CONCLUSIE

houd de AV klep zo lang mogelijk

vervanging bij AVSD: vooral kunstklep

Antistolling (Vit K antagonist)

klein kind versus volwassenen: 2 werelden



HOUD DE KLEP

Bedankt voor jullie aandacht !

