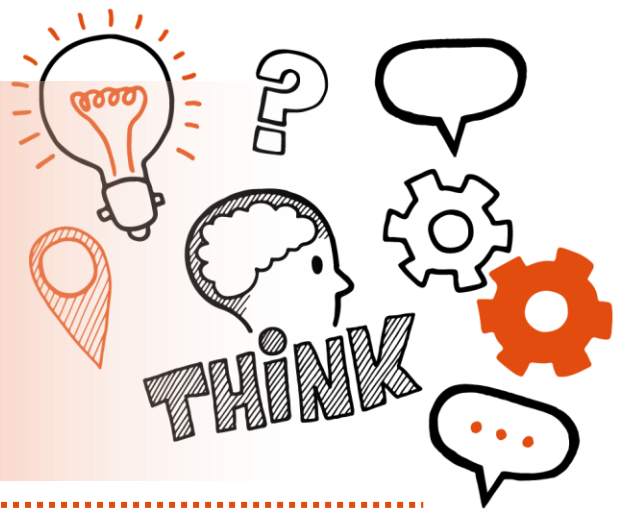


Think about
Professional discussion underpinned
by a portfolio of evidence
Level 3 ST0550 Safety, Health and
Environment Technician V1.4



On the day of this assessment you will carry out:



A 60-minute (+10%) professional discussion



Remote or face-to-face



In a suitable, controlled environment free from distraction



With an end-point assessor



Key point

You will have already submitted your portfolio of evidence, which is not formally assessed, but can be used to illustrate your answers.



Do

- Review the criteria associated with the professional discussion underpinned by a portfolio of evidence - this can be found in the EPA Kit and in the table at the end of this document
- Review relevant legislations, regulations and your organisation's policies and procedures
- Ensure a quiet room is available and that there are no interruptions
- Be prepared to answer at least 10 questions and any follow-up questions that your assessor may ask



Don't

- Forget to bring your ID
- Forget to plan
- Forget to bring your portfolio to refer to during the professional discussion



Next steps

- Results can take up to 7 working days to be confirmed
- Your manager or training provider will inform you of the results



Resits

- If you do not achieve a pass result on the professional discussion underpinned by a portfolio of evidence you can resit the assessment





Use the table below to plan and prepare for the professional discussion underpinned by a portfolio of evidence

(P) indicates pass criteria

(D) indicates distinction criteria

Assessment criteria	Key points to remember
Research and Best Practice	
(P) Explain how you use research relating to safety, health and environmental issues from trusted sources to drive forward innovation and how you apply your own ongoing professional development to improve systems or processes. (S10, B4, B8)	
(D) Justify research and selection criteria for application in the workplace to improve systems or processes. (S10)	



Inspections and Investigations

(P) Describe how you can assist in an incident investigation and implement SHE inspection and monitoring systems. (S6, S11)

(P) Explain how you ensure manufacturer's instructions for the safe use of products is cascaded to colleagues. (S5)

(P) Describe how you would monitor and analyse SHE performance, whilst ensuring all records are prepared and maintained in accordance with legislation and accessible to all authorised parties. (S7, S8)



(D) Explain how you would lead an incident investigation and your justification for embedding the lessons learnt. (S11)

(D) Explain the need for different types of SHE inspections and monitoring systems. (S6)

Stakeholder Engagement and signposting

(P) Explain how you assist the management team in establishing, managing or maintaining relationships with external stakeholders, internal departments and use your professional judgement to recognise situations where the activity will benefit from contributions and expertise of other internal departments and signpost to a more relevant third party internally. (S9, S13, B5)



(D) Justify your professional judgement to recognise situations where the activity will benefit from contributions and expertise of other internal departments. (S13)

Ethics

(P) Describe the moral reasons for implementing SHE practices and explain how you apply the code of ethics to ensure you uphold safe working practices at all times. (K1, B6)

V3.0

