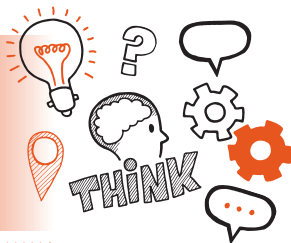


Think about Practical Assessment Level 2 Urban Driver AP01



On the day of this assessment you will carry out:



A 120-minute practical assessment consisting of three components.

1. Practical vehicle journey plan (15 minutes)
2. Practical pre-use checks (40 minutes)
3. Practical driving assessment (65 minutes)



Face-to-face



In your natural working environment



With an end-point assessor



Key point

You will be required to drive a vehicle on a real road network to a final destination which will be a simulated site, chosen by Highfield.



Do

- ☐ Review the criteria associated with the practical assessment – this can be found in the EPA kit
- ☐ Ensure you have a category C/C1 vehicle and route planning equipment and resources available
- ☐ Take into account the most efficient routes, vehicle type and limitations, road features and use of navigation equipment in your planning
- ☐ Complete vehicle checks in line with the Driver and Vehicle Standards Agency (DVSA) guidelines and remember to check the fuel gauge/charge level, the cab condition and identify any defects
- ☐ Remember to risk assess the destination and park the vehicle safely



Be prepared to answer at least 5 questions relating to driving safely and professionally, using IT and equipment and risk assessment



Don't



Forget to plan



Forget to bring your ID



Forget to include a range of road types in your journey plan



Next steps

- Results can take up to 7 working days to be confirmed
- Your manager/training provider will inform you of the results



Resits

- If you do not achieve a pass result on the practical assessment you can resit the assessment



Use the table below to plan and prepare
for the practical assessment

Standard area	Key points to remember
Vehicle preparation	
Route planning	
Drive safely and professionally	

Use of equipment and IT

Risk assessment