



PPG STREAM™ Clear Paint Film

Surface preparation, application and maintenance

PPG STREAM clear paint film is an evolution in paint, designed for lasting brilliance, durability and easy application and maintenance. Proper preparation and maintenance of your PPG finish will help ensure the best performance and aesthetics.

Overview

This guide includes the repair of vehicle surface defects if needed, the removal of exterior parts, thorough cleaning of work areas and substrates, application of PPG STREAM clear paint film, finishing techniques, and, finally, maintenance and care of the film. Following these steps will help to ensure the successful application of your film and aid in maintaining its ongoing beauty for years to come.

Recommended Tools

- Wet wall
- Nitrile gloves
- Safety
- Clay bar or mitt
- 90% isopropyl alcohol
- Glass cleaner
- Aqueous soap solution
- Spray bottle
- Squeegee
- Adhesion promoter
- Knife or scissors
- 1/2" clear trap tape
- Microfiber towel
- Quick detailer

Step 1

Repair surface defects / remove previous vehicle wraps

If the vehicle has surface defects, bodywork issues or corrosion, then repair before beginning. Sanding and primer application must be performed prior to film installation. Used or weathered panels will require repair for damage, abrasion, chipping or erosion. Installers should feather paint and apply primer to repaired surfaces, then follow directions for fresh paint.

Similarly, any previous vehicle wraps will need to be fully stripped and all adhesive residue removed prior to preparation for clear paint film application.



Previous vehicle wraps and adhesives
should be removed

Step 2 Parts removal and surface cleaning

Prior to installation of clear paint film, the following parts must be removed:

- Emblems/badges
- Any exterior aerodynamic components, such as splitters, air dams, side skirts or wings
- Hood/bonnet vents/intake covers

Once removed, any parts that will be decorated in PPG STREAM clear paint film must be fully cleaned. Clean the panels first with soap and water. Once dried, follow with a clay bar or clay mitt to remove any debris. Next, clean using 90% alcohol and quickly dry the surface with a clean cloth to ensure alcohol is not sitting on the surface. Painted surfaces will need to be wiped down with a tack cloth to remove any remaining particulates. Application in a clean, climate-controlled environment is highly recommended.

Once all surfaces have been cleaned and prepared, ensure that no remaining debris, dust or liquid remains on the substrate.



Step 3 Application preparation: wet wall

MIX RATIO FORMULA:

Dawn Original Dish Soap to Deionized Water.

Below 60° F ($<15^{\circ}\text{C}$)	Not Recommended
60 - 65° F ($15 - 18^{\circ}\text{C}$)	1.4 ml per 1000 ml
65 - 70° F ($18 - 21^{\circ}\text{C}$)	1.5 ml per 1000 ml
70 - 75° F ($21 - 24^{\circ}\text{C}$)	1.7 ml per 1000 ml
75 - 80° F ($24 - 26^{\circ}\text{C}$)	1.8 ml per 1000 ml
80 - 85° F ($26 - 29^{\circ}\text{C}$)	2.0 ml per 1000 ml
Above 85° F ($>29^{\circ}\text{C}$)	Not Recommended

1. Prepare work area for film application. The entire area must be clean and free of dirt and lint.
2. Clean the entire wet wall with an appropriate glass cleaner.
3. An application solution can aid with the film application process. Based on the chart, add 1.4 to 2.0 ml of Dawn® Original Dish Soap to 1,000 ml of deionized water. Adjust the amount of soap in 0.2 ml increments based on the temperature. More soap is needed for warmer temperatures, less for cooler temperatures. Soap solutions can behave differently as they age. Thoroughly rinse bottles and change solutions daily.
4. Spray the application solution thoroughly onto the wet wall, making sure the solution will extend on the wall beyond the edges of the film that is to be applied.
5. Remove clear paint film from cardboard container and apply to the wet wall with the release liner facing you.
6. Once the film is completely applied to the wet wall, carefully remove the liner starting at a corner of the film. Be careful not to stretch or tear the film.
7. After the liner has been completely removed, the adhesive side of the film is now towards you. Liberally spray the application solution over the entire film.

NOTE: For large pieces of film such as the hood, deck lid or roof, remove the liner in sections and spray each section of film thoroughly. This will help prevent the film from adhering to itself should it flip over while on the wet wall.

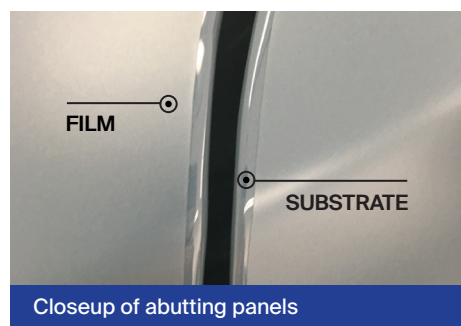
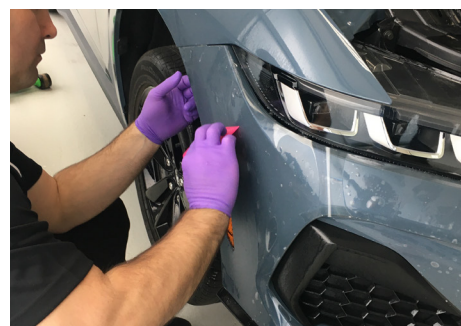


Step 4 Application

Each section of PPG STREAM clear paint film has been pre-cut to the dimensions of your vehicle with additional material that extends past the edges of surface if necessary.

Installation must be performed in dust-free, climate-controlled environments between 65-80° F (18-25° C).

1. Wet the substrate surface with the application soap solution.
2. Remove wet film from wet wall and spray with the application solution before proceeding.
3. On relatively flat surfaces, affix film using some tension across the substrate.
4. Apply the film along natural lines in the bodywork. Once you have the film aligned and in place, spray an alcohol-based tack solution at the edges to activate the adhesive. Tack solution can be made using 90% isopropyl alcohol cut at a ratio of 80% deionized water to 20% alcohol. Begin to apply pressure using a squeegee from the center outwards, using controlled, overlapping strokes and constant pressure to remove the application solution.
5. Edges that extend past the panel edge can be tucked at corners, using trap tape to seal the film. Relief cuts and adhesion promoter can often help with convex edges.
6. To prevent wear or peeling from parts expansion, film should not abut attached parts. This applies to fixtures like side mirror and door handles that are attached to the door where film will encircle the entire part.
7. When two panels meet and film cannot be extended and wrapped around the edge, the film will end 1 mm from the edge.

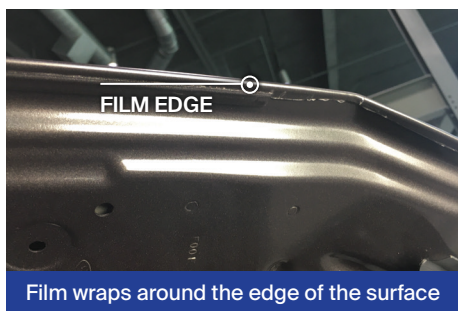


Closeup of abutting panels

Step 5 Finishing

Allowing the film to set overnight is highly recommended to ensure permanent bond strength.

Imperfections in manufacture of bodywork (e.g., edges on the underside of hoods/bonnets, weld points), can often disrupt good adhesion. Touch these up by "trapping" these edges with ½" clear tape to provide a lasting solution.



Film wraps around the edge of the surface



Tape over film edge to trap it

Step 6

Maintenance

Regular vehicle upkeep and cleaning will enhance the aesthetic value of PPG STREAM clear paint film while preserving and protecting the substrate. It is recommended to wait at least 72 hours after film application before performing any cleaning or maintenance.

Maintenance of PPG clear paint film is easier than ever due to its built-in chemical resistance, toughness, and self-healing properties. The system is engineered for extreme environments and maintenance protocols, for better resistance to cleaners, environmental elements, engine fluids, fuels and lubricants.

Tire and asphalt debris/buildup is cleaned by applying degreaser to a microfiber towel or rag and then wiping the film.

After wiping road debris and particulates from the surface, apply quick detailer to a microfiber towel and use long lateral strokes to wipe away residue. Be sure to wipe away any streaks to ensure the best shine.

To achieve the showroom-quality shine, polish and wax the clear paint film just like a traditional paint finish.



PPG STREAM Clear Paint Film

paintapplieddifferently.com/customization

This document contains general information only and should not be construed as creating any warranties, express or implied.

Please contact a PPG representative for additional information.

PPG Advanced Surface Technologies • 9360 Innovation Campus Way, Suite 100, New Albany, OH 43054

The PPG Logo and We protect and beautify the world are registered trademarks of PPG Industries Ohio, Inc.
Dawn is a trademark of Procter & Gamble. © 2025 PPG Industries, Inc. All Rights Reserved.



We protect and beautify the world®