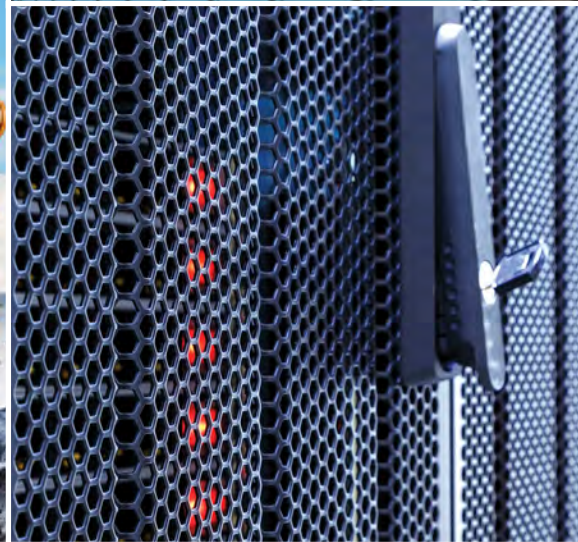




PPG TECHNOLOGIES: EUROPE, MIDDLE EAST & AFRICA

Liquid coatings



Preferred Product Offering Selection for Industrial Coatings



We protect and beautify the world®



Liquid coatings from PPG

PPG's innovative liquid coatings portfolio is suitable for a broad range of industries and products that span consumer electronics to architectural building components. Our versatile and durable liquid coatings are available in a variety of solventborne and waterborne chemistries and can be applied with a range of application methods.

Unique benefits

- Global capability
- Color styling and color trends consultation
- Large color library with customizable colors and glosses
- Variety of application methods resulting in customization and efficiencies
- Multiple performance levels to match specific requirements
- Numerous platform options provide versatility and flexibility
- Technical support on- and off-site

Table of Contents

About this guide	3
Heavy Duty Equipment	4
Coil.....	16
General Industrial	20
Appliance.....	30
Bicycle	32
Transportation	34

About this guide

This guide showcases PPG's preferred products – the coatings that have proven the most popular and useful to the widest number of customers. We proudly feature products from two distinct brands PPG and Tikkurila, each with its unique strengths. This diversity ensures a comprehensive range of options for your needs. However, it's important to note that our offering extends beyond these selections. Please consult your local PPG representative to find the best solution for your needs.

The various product ratings are a distillation of existing technical information, performance testing data and internal review from experienced product experts.

Products are evaluated in relation to comparable offerings from PPG and Tikkurila. This evaluation excludes comparisons with products from competitors or PPG or Tikkurila products for different applications and industries.

For further details, consult your local PPG representative or visit www.ppg.com/industrialcoatings.

The technical data presented in this document is based upon information believed by PPG to be currently accurate. However, no guarantees of accuracy, comprehensiveness or performance are given or implied. Continuous improvements in coatings technology may cause future technical data to vary from what is in this document.



Heavy Duty Equipment

PPG's cost-effective and sustainable coatings for heavy duty equipment are engineered to protect vehicles and machinery from corrosion, chemicals, UV damage and fading, even under the harshest conditions. Meeting stringent OEM applications, PPG provides solutions that deliver world-class protection performance and lower applied costs.

PPG offerings

System	Coating Type	Product Name	Product Identifier	Chemistry	Features >	< Potential Benefits to Customer
Waterborne	Primers	AQUACRON® WPR	WPR30 serie	2K Polyurethane	Compatibility with solventborne and waterborne topcoats	Allows hybrid systems for customized solutions
					Common hardener with topcoat	Reduces process complexity and inventory
					Application robustness	Generates less rework and optimizes cost to use
					Voc < 150g/L	Offers a sustainable coating system

Solventborne	Primers	SPECTRACRON® SPR	SPR63 serie	2K Epoxy	Application robustness	Flexibility in process conditions Protects surfaces with high blast profiles
		Spectracron SPR	SPR64 serie	2K Epoxy	Fast wet on wet application	Optimizes footprint and though-output
					Common hardener with topcoat	Reduces complexity and inventory
		Spectracron SPR	SPR72 serie	1K Epoxy Ester	No hardener needed	Reduces complexity and inventory
					Good performance	Offers economical performance
		Tikkurila	SPR277/ Temazinc serie	2K Zinc Rich Epoxy	High corrosion protection	Protects assets and increases product longevity
					Smooth surface	Allows differentiation through final appearance
		Spectracron SPR	SPR91 serie	2K Epoxy	High corrosion performance on multisubstrate	Protects assets and increases product longevity
					Common hardener with topcoat	Reduces complexity and inventory
		Spectracron SPR	SPR53 serie	2K Epoxy	Application robustness	Flexibility in process conditions
					High corrosion protection	Protects surfaces with high blast profiles

Performance					Substrates		VOCs with exempts			Cure			Application			
Quality	Corrosion	Durability	Appearance / Cosmetic	Intermix / Dispensability	Metal	Plastic*	≤ 250 g/L (≤ 2.1 lbs./gal)	< 420 g/L (< 3.5 lbs./gal)	≥ 420 g/L (≥ 3.5 lbs./gal)	Air Cure 25-60° C (77-140° F)	Low Cure 60-100° C (140-212° F)	High Cure >100° C (>212° F)	Conventional / HVL P	Airmix / Airtless	Disk / Bell	Dip
Better	★★★★	★★	★		✓	✓	✓			✓	✓		✓	✓		
Better	★★★★		★★★★		✓	✓			✓	✓	✓		✓	✓		
Better	★★★★		★★		✓				✓	✓	✓		✓	✓		
Good	★★		★★		✓				✓	✓	✓		✓	✓		✓
Best	★★★★★		★		✓	✓			✓	✓			✓	✓		
Best	★★★★★		★★★★		✓	✓			✓	✓			✓	✓		
Best	★★★★★		★★		✓			✓	✓	✓			✓	✓		



* Requires adhesion promoter.

Heavy Duty Equipment (continued)

PPG offerings

System	Coating Type	Product Name	Product Identifier	Chemistry	Features >	< Potential Benefits to Customer
Waterborne	Topcoat	Aquacron WPUT	WPUT serie	2K Polyurethane	Application robustness	Lowers application cost and rework
					High UV durability	Protects assets and increases product longevity
Solventborne	Topcoat	Spectracron SPU	SPU5000	2K Polyurethane	Application robustness	Reduces rework and cost to use
					Good performance	Offers economical performance
					Wide color palette	Allows differentiation through color
		SPECTRACRON® XP	XP serie	2K Polyurethane	Application robustness	Reduces rework and cost to use
					Good performance	Offers economical performance
					Wide color palette	Allows differentiation through color
		SPECTRACRON® BHS	BHS serie	2K Polyurethane	Superior appearance and yield	Allows differentiation through appearance
					Superior performance and multi OEM approval	Protects assets and increases product longevity
					Wide application window and application robustness	Reduces rework cost and lowers cost to use
					High solid and low VOC	Offers a sustainable coating system
Solventborne	DTM	Spectracron SPU	SPU5000 serie	2K Polyurethane	Application robustness	Reduces rework and cost to use
					Cost-effective solution	Offers economical performance

Performance					Substrates		VOCs with exemptions			Cure			Application			
Quality	Corrosion	Durability	Appearance / Cosmetic	Intermix / Dispensability	Metal	Plastic*	≤ 250 g/L (≤ 2.1 lbs./gal)	< 420 g/L (< 3.5 lbs./gal)	≥ 420 g/L (≥ 3.5 lbs./gal)	Air Cure 25-60° C (77-140° F)	Low Cure 60-100° C (140-212° F)	High Cure >100° C (>212° F)	Conventional / HVL P	Airmix / Airless	Disk / Bell	Dip
Best		★★★	★★★★	✓	✓	✓	✓				✓		✓	✓		
Better		★★★	★★★	✓	✓	✓		✓		✓	✓		✓	✓		
Better		★★★	★★★	✓	✓	✓		✓		✓	✓		✓	✓		
Best		★★★	★★★★	✓	✓	✓	✓			✓	✓		✓	✓		
Better	★	★★★	★★★	✓	✓	✓		✓		✓	✓		✓	✓		



* Requires adhesion promoter.

Heavy Duty Equipment (continued)

Tikkurila offerings

System	Coating Type	Product Name	Chemistry	Features >	< Potential Benefits to Customer
Waterborne	Primers	Fontecryl SC-MR 10	1K Acrylic	Self priming	Can be applied directly onto steel
				Fast drying	Enables rapid overcoating, thus shortening overall painting time
				Wide range of colors	Allows differentiation through color

Solventborne	Primers	Temazinc 77	2K Zinc Rich Epoxy	Zinc content fulfils the requirements of ISO standard 12944-5	Cost-efficient option for cathodic corrosion protection in severe environments
				For paint systems in severe climatic stress	Utilized in coating systems for enhanced longevity requirements.
		Temacoat GPL-S Primer	2K Epoxy	Excellent adhesion to various surfaces	A universal, all-round primer to reduce inventory
				Long overcoating interval	Recoatable without roughening up to 6 months
				Tintable, MED certified	Can be used for painting interior ship surfaces
		Temacoat HS-F Primer	2K Epoxy	Short overcoating time with polyurethane topcoats	Enables rapid overcoating with polyurethane topcoats, thus shortening overall painting time
				Wide range of film thicknesses achievable in one layer	Eases the painting process of multiform structures
				Good adhesion to steel, zinc and aluminum surfaces	Provides excellent corrosion protection for the paint system

Solventborne	Adhesion promoters	Temanyl PVB Grey	1K Polyvinyl-butylal	Excellent adhesion to various surfaces	Ensures the durability of the entire painting system
				Very fast drying	Saves time during the application process
				Withstands temperatures up to +160°C (320 F)	Due to its high temperature resistance can be overcoated with powder coatings
	Temakeep	2K Epoxy	Excellent adhesion to steel, zinc, aluminium and stainless steel	Provides excellent corrosion protection for the paint system	
			Can be used on previously painted hard surfaces	Can be used as a barrier coat for other types of systems	
			Compatible with almost any type of paint	Extends the usage area and eases the painting process	

Performance					Substrates			VOCs with exemptions			Cure		Application		
Quality	Corrosion	Durability	Appearance / Cosmetic	Colors/ tinting	Steel	Zinc	Aluminum	≤ 250 g/L (≤ 2.1 lbs./gal)	< 420 g/L (< 3.5 lbs./gal)	≥ 420 g/L (≥ 3.5 lbs./gal)	Normal 15-35°C (59-95 F)	Forced 35-80°C (95-176 F)	Conventional / HVLP	Airmix / Airtless	Dip
Better	★★	★★	★★★	Tintable	✓	✓	✓	✓			✓	✓	✓	✓	

Best	★★★	★★★	★★	Grey	✓					✓	✓			✓	
Best	★★★	★★★	★★	Tintable	✓	✓	✓		✓		✓	✓		✓	
Best	★★★	★★★	★	Grey and red	✓	✓	✓	✓			✓	✓		✓	

Better	★★	★★	★★	Grey	✓	✓	✓			✓	✓	✓	✓	✓	✓
Better	★★	★★	★★★	Grey, white; limited tintability	✓	✓	✓		✓		✓		✓	✓	

Heavy Duty Equipment (continued)

Tikkurila offerings

System	Coating Type	Product Name	Chemistry	Features >	< Potential Benefits to Customer
Waterborne	Topcoats	Fontedur HB 80	2K Polyurethane	Superior gloss and color retention	For environments with high demands on esthetics and resistance
				Durable and easy-to-clean surface	Retains the outlook of the painted object longer
				Waterborne product with low VOCs	More environmentally friendly than solventborne systems
		Fontedur Clear Plus	2K Polyurethane	Excellent weathering and abrasion resistance	Improved UV resistance extends product's lifespan
				Lower VOC emissions	More environmentally friendly than solventborne systems
				Very good spraying properties	Easier application with no need for thinning

Solventborne	Topcoats	Temadur 50	2K Polyurethane	Reliable technology	A time-proven, easy-to-use general purpose topcoat
				Good weather and abrasion resistance	Helps to prolong the life cycle of the painted object, even with metallic colors
				MED certified	Can be used for painting interior ship surfaces
		Temadur 90	2K Polyurethane	Superior gloss and color retention	Highlights the appearance of your assets
				Excellent weathering and abrasion resistance	Retains the outlook of the painted object longer, even with metallic colors
		Temadur HS 90	2K Polyurethane	Appearance of the painted surface close to that achieved with car finishes	Painted object will retain its aesthetically-pleasing film appearance even longer
				High-gloss paint film with one application	Enables faster throughput time and, therefore, more efficient production
				Excellent weathering and abrasion resistance	Prolongs the maintenance painting interval
		Temathane PC 50	2K Polyurethane	Excellent gloss and color retention	High-solids product to retain the outlook of the painted object longer
				For paint systems in severe climatic stress	Helps extending the service life of the paint system
				Excellent weather and abrasion resistance	Protects assets and increases product longevity
		Temathane PC 80	2K Polyurethane	Excellent gloss and color retention	High-solids product to retain the outlook of the painted object longer
				For paint systems in severe climatic stress	Helps extending the service life of the paint system
				Excellent weather and abrasion resistance	Protects assets and increases product longevity
		Temadur Clear	2K Polyurethane	Significantly improves the finishing coat	Provides extra protection to retain the outlook of your assets even longer
MED certified	Can be used for painting interior ship surfaces				
Suitable for various surfaces	Adheres well to aluminium and zinc surfaces				

Performance					Substrates			VOCs with exempts			Cure		Application		
Quality	Corrosion	Durability	Appearance / Cosmetic	Colors/ tinting	Steel	Zinc	Aluminum	≤ 250 g/L (≤ 2.1 lbs./gal)	< 420 g/L (< 3.5 lbs./gal)	≥ 420 g/L (≥ 3.5 lbs./gal)	Normal 15-35°C (59-95 F)	Forced 35-80°C (95-176 F)	Conventional / HVLP	Airmix / Airless	Dip
Best		★★★	★★★★	Tintable	-	-	-	✓			✓	✓	✓	✓	
Best		★★★	★★★★	Clear	-	-	-	✓			✓		✓	✓	
Better		★★★	★★★	Tintable	-	-	-			✓	✓	✓	✓		
Better		★★★★	★★★★	Tintable	-	-	-			✓	✓	✓	✓		
Best		★★★★	★★★★	Tintable	-	-	-	✓			✓	✓	✓	✓	
Best		★★★★★	★★★	Tintable	-	-	-	✓			✓	✓	✓	✓	
Best		★★★★★	★★★	Tintable	-	-	-	✓			✓	✓	✓	✓	
Best		★★★★	★★★★	Clear	-	-	-			✓	✓	✓	✓		

Heavy Duty Equipment (continued)

Tikkurila offerings

System	Coating Type	Product Name	Chemistry	Features >	< Potential Benefits to Customer
Waterborne	DTM	Fontecryl SC-MR 10	1K Acrylic	Self priming	Can be applied directly onto steel
				Fast drying	Enables rapid overcoating, thus shortening overall painting time
				Wide range of colors	Allows differentiation through color
		Fontecryl SC 50	1K Acrylic	High film-building properties	Reduces application time and costs
				Single-coat paint	Enhances efficiency, easier to apply, and reduces application costs.
				Wide range of colors	Allows differentiation through color
		Fontecryl SC-EF 50	1K Acrylic	Does not contain zinc phosphate	More environmentally friendly than traditional waterborne corrosion protection paints
				Self priming	Can be applied directly onto steel
				Great film building properties	Thick paint film with one application reduces application costs
		FONTECOAT® EP 50	2K Epoxy	Fast curing	May help speeding up the painting process and decrease the overall costs of the painting system
				Environmentally friendly (low VOC emissions)	An ideal option when a low VOC content is required
				Excellent adhesion and surface tolerance	Possible to achieve a very rapid production cycle
Fontecoat FD 20	2K Epoxy	Fast curing	May help speeding up the painting process and decrease the overall costs of the painting system		
		Self priming	Can be applied directly onto steel		
		Easy to apply	Can be applied in thick layers, thus enabling a faster painting process		

Performance					Substrates			VOCs with exemptions			Cure		Application		
Quality	Corrosion	Durability	Appearance / Cosmetic	Colors / tinting	Steel	Zinc	Aluminum	≤ 250 g/L (≤ 2.1 lbs./gal)	< 420 g/L (< 3.5 lbs./gal)	≥ 420 g/L (≥ 3.5 lbs./gal)	Normal 15-35°C (59-95 F)	Forced 35-80°C (95-176 F)	Conventional / HVLP	Airmix / Airless	Dip
Better	★★	★★	★★★★	Tintable	✓	✓	✓	✓			✓	✓	✓	✓	
Better	★★	★★	★★★★	Tintable	✓			✓			✓	✓	✓	✓	
Better	★★	★★	★★★★	Tintable	✓			✓			✓	✓	✓	✓	
Better	★★★★	★★★★	★★	Tintable	✓			✓			✓	✓	✓	✓	
Best	★★★★	★★★★	★★	Tintable	✓			✓			✓	✓		✓	

Heavy Duty Equipment (continued)

Tikkurila offerings

System	Coating Type	Product Name	Chemistry	Features >	< Potential Benefits to Customer
Solventborne	DTM	Temadur 10	2K Polyurethane	Can be used directly on metal	Enhances productivity, easier to apply, and reduces cost for steel, zinc, and aluminum surfaces
				Metallic colors in matt versions	Allows differentiation through color, even metallic colors
				MED certified	Can be used for painting interior ship surfaces
		Temadur 20	2K Polyurethane	Can be used directly on metal	Enhances productivity, easier to apply, and reduces cost for steel, zinc, and aluminum surfaces
				Good weather and abrasion resistance	Helps to prolong the life cycle of the painted object
				MED certified	Can be used for painting interior ship surfaces
		Temadur SC-F 20	2K Polyurethane	Directly to metal	Enhances efficiency, easier to apply, and reduces application costs
				Fast curing	May help speeding up the painting process and decrease the overall costs of the painting system
				Good gloss and color retention	Forms a durable, easy-to-clean, non-chalking finish
		Temadur SC-F 50	2K Polyurethane	Directly to metal	Enhances efficiency, easier to apply, and reduces application costs
				Fast curing	May help speeding up the painting process and decrease the overall costs of the painting system
				Good gloss and color retention	Forms a durable, easy-to-clean, non-chalking finish
		Temadur SC-F 80	2K Polyurethane	Directly to metal	Enhances efficiency, easier to apply, and reduces application costs
				Fast curing	May help speeding up the painting process and decrease the overall costs of the painting system
				High film-building properties	Thick paint film with one application reduces application costs
		DUASOLID® 50	2K Oxirane Ester	Iso-cyanate free DTM product	An option when products containing iso-cyanate cannot be used
				Good corrosion resistance	Offers both protection and performance
				Easy to apply	As a high-solids product can be applied in thick layers, thus enabling faster production
		Temasilox	2K Polysiloxane	Excellent anti-corrosive properties	Protects your assets and increases the life cycle of the product
				Does not contain free isocyanates	Promotes a healthier working environment and has less impact on the environment
				High solids, VOC compliant	Remarkable reduction in solvent emissions
TEMASPART® HS-SC 80	2K Polyurethane	Fast curing	Maximises production throughput at normal room temperature resulting in lower energy costs		
		Good anti-corrosive properties	For prolonging the service life of your product		
		Low VOC	Provides significant reductions in solvent emission		

Performance					Substrates			VOCs with exempts			Cure		Application		
Quality	Corrosion	Durability	Appearance / Cosmetic	Colors/ tinting	Steel	Zinc	Aluminum	≤ 250 g/L (≤ 2.1 lbs./gal)	< 420 g/L (< 3.5 lbs./gal)	≥ 420 g/L (≥ 3.5 lbs./gal)	Normal 15–35°C (59–95 F)	Forced 35–80°C (95–176 F)	Conventional / HVLP	Airmix / Airless	Dip
Best	★★★★	★★★★	★★	Tintable	✓	✓	✓			✓	✓	✓	✓	✓	
Best	★★★★	★★★★	★★	Tintable	✓	✓	✓			✓	✓	✓	✓	✓	
Best	★★★★	★★★★	★★	Tintable	✓				✓		✓	✓	✓	✓	
Best	★★★★	★★★★	★★	Tintable	✓	✓			✓		✓	✓	✓	✓	
Best	★★★★	★★★★	★★★★	Tintable	✓				✓		✓	✓	✓	✓	
Good	★★	★★	★★	Tintable	✓				✓		✓	✓	✓	✓	
Best	★★★★	★★	★★★★	TS Premium	✓				✓		✓	✓		✓	
Best	★★★★	★★	★★★★	TS Premium	✓				✓		✓		✓	✓	

Coil

PPG's coil coatings strike a perfect balance of beauty and protection with coatings engineered to withstand the most rigorous conditions. Architects, product designers and manufacturers appreciate PPG's innovative coatings for the design flexibility, empowering them to be creative with shapes, colors, patterns and textures.

PPG offerings

System	Coating Type	Product Name	Product Identifier	Chemistry	Features >	< Potential Benefits to Customer
Solventborne	Primer	DuraPrime ZAM 515	Chrome VI NIA white or grey	Polyester	Multiple substrates (including zinc aluminum magnesium) and chemistries compatibility	Compatible with all types of polyester, PVDF, polyurethane backbone
					Good flexibility and good corrosion protection	Prevents cracking during forming and increases durability
					Multipurpose - universal primer	Reduces inventory and process complexity
		DuraPrime HY 525	Chrome VI NIA white or grey	Polyester, Polyurethane	Multiple substrates (including zinc aluminum magnesium)	Compatible with all types of polyester, pvd, polyurethane backbones
					Good flexibility and excellent corrosion protection	Prevents cracking during forming and increases durability
					High dry film thickness (max 25um)	High film build designed for high speed lines cured by Induction, NIR, IR and conventional oven
Solventborne	Backcoat	DURABACK® PR	White, grey, transparent	Polyester-Epoxy	Premium backcoat in particular for hot temperature and humidity storage resistance	Reduces coil collapsing issue
					Very good coverage	Provides good hiding power
					Excellent adhesion to PUR, PIR insulation foams and glues	Better humidity resistance
					Multipurpose - Universal Backcoat	Reduces inventory and process complexity
					Can be applied direct to substrate	User friendly and versatile
					Cured on conventional air convection, induction, NIR and IR ovens	Can fit various line conditions
Solventborne	Topcoat	Durastar HP 9000 HR	BP (Building Products)	Polyester	Good flexibility	Prevents cracking during forming
					Cured on conventional air convection, induction, NIR and IR ovens	Can fit various line conditions
					Very good scratch and mar resistance	Reduces damage during handling and installation
					Higher volume solids and enhanced flow	Reduces applied cost and increases line speed
					Intermix manufacture	Fast delivery/color availability
		Durastar VHP / HP10000 HR	BP (Building Products)	Polyester	Good flexibility	Prevents cracking during forming
					Cured on conventional air convection, induction, NIR and IR ovens	Can fit various line conditions
					Excellent outdoor durability	Maintains quality and aesthetics for a long time
					Higher volume solids and enhanced flow	Reduces applied cost and increases line speed
					Very good scratch and mar resistance	Reduces damage during handling and installation
		Durastar Writex	Wrinkle	Polyester	"Wrinkle" finish with sparkle effect different textures fine and coarse available	Enhances texture of surrounding materials
					Very Good flexibility with a tough and hard finish	Reduces damage during handling and installation
					Higher volume solids with textured effect	Increases hiding of substrate imperfections
					Intermix manufacture	Fast delivery/color availability

Performance					Substrates		Cure	Application	Segments		
Quality	Corrosion	Durability	UV Class	Intermix	Aluminum	Steel	Recommended PMT (Peak Metal Temperature) Range (°C/mins)	Coil (Rollercoating)	Industrial Building Products	Appliances	Architectural Building Products
Better	★★★				✓	✓	224-243° C (435-469° F)	✓	✓		✓
Best	★★★★★				✓	✓	232-249° C (450-480° F)	✓	✓		✓
Better	★★	★★			✓	✓	216-254° C (420-489° F)	✓	✓		
Better		★★★	RUV3	✓	✓	✓	232-249° C (450-480° F)	✓	✓		✓
Better		★★★★★	RUV4	✓	✓	✓	232-249° C (450-480° F)	✓	✓		✓
Best		★★★	RUV4	✓	✓	✓	232-243° C (449-469° F)	✓			✓

Continued on next page

PPG offerings

System	Coating Type	Product Name	Product Identifier	Chemistry	Features >	< Potential Benefits to Customer							
Solventborne	Topcoat	Durastar Writex PU	Wrinkle	Polyurethane	"Wrinkle" finish with sparkle effect different textures fine and coarse available	Enhances texture of surrounding materials							
					High flexibility with a tough and hard finish	Reduces damage during handling and installation							
					Higher volume solids	Increases hiding of substrate imperfections							
		DURANAR®	IF	70% PVDF, Solid Colors	IF	70% PVDF, Solid Colors	Outstanding UV durability (color and chalk resistance)	Maintains quality and aesthetics for a long time					
							Superior corrosion resistance	Reduces coatings failure and warranty claims					
							High flexibility with a tough and hard finish	Reduces damages during handling and installation					
							Intermix manufacture	Fast delivery/color availability					
							Duranar	IF Sunstorm®	70% PVDF	IF Sunstorm®	70% PVDF	Mica formulations for pearlescent/metalescent finish	Eliminates cost of aluminum flakes or additional coats
												Intermix manufacture	Fast delivery/color availability

Solventborne	Clearcoat	Duranar	IF XL / MXL	70% PVDF with PVDF clearcoat or mica-tinted PVDF clearcoat	Additional corrosion protection when used over Duranar topcoats	Protects and extends aesthetics of metallic colors		
					Good stain resistance	Reduces maintenance time and costs		
					Intermix manufacture	Fast delivery/color availability		
		Durabrite	IF Transparent or semi-transparent	FEVE	IF Transparent or semi-transparent	FEVE	Can be applied directly over cleaned and brushed aluminum	Achieves high-end aesthetics with fewer coating layers
							Excellent UV durability (gloss retention)	Maintains quality and aesthetics for a long time
							Hard finish with good scratch and abrasion resistance	Reduces damage during handling and installation
							Intermix manufacture	Fast delivery/color availability

Performance					Substrates		Cure	Application	Segments		
Quality	Corrosion	Durability	UV Class	Intermix	Aluminum	Steel	Recommended PMT (Peak Metal Temperature) Range (°C/min)	Rollercoating (Coil)	Industrial Building Products	Appliances	Architectural Building Products
Best		★★★★★	RUV4	✓	✓	✓	243-249° C (469-480 F)	✓			✓
Best		★★★★★	RUV4	✓	✓	✓	243-254° C (469-489° F)	✓	✓		
Best		★★★★★	RUV4	✓	✓	✓	243-254° C (469-489° F)	✓			✓
Best		★★★★★	RUV4	✓	✓	✓	243-254° C (469-489° F)	✓			✓
Best		★★★★★	RUV4	✓	✓	✓	243-254° C (469-489° F)	✓			✓
Best		★★★★★	RUV4	✓	✓	✓	243-254° C (469-489° F)	✓			✓

General Industrial

PPG's coatings are the trusted choice for leading equipment manufacturers, offering cost-effective, vibrant, and low-emission general industrial coatings. These coatings enhance product durability and improve the efficiency of coating processes. From electrical equipment to toolboxes, from water valves to shopping carts, PPG has the solutions to optimize the coating process, making finished products look better and last longer.

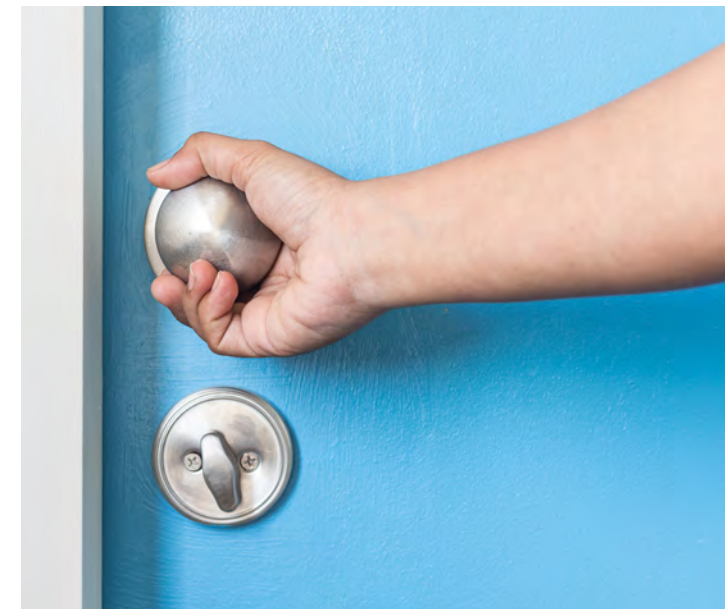
PPG Offerings

System	Coating Type	Product Name	Product Identifier	Chemistry	Features >	< Potential Benefits to Customer
Solventborne	Primer	Spectracron SPR	SPR72 serie	1K Epoxy Ester	No hardener needed	Reduces complexity and inventory
					Good performance	Offers economical performance
Waterborne	Topcoat	Aquacron WPUT	WPUT serie	2K Polyurethane	Application robustness	Lowers application cost and rework
					High UV durability	Protects assets and increases product longevity
Solventborne	Basecoat	Durethane XPB	XPB serie	1K Acrylic	Vast color database	Allows differentiation through color
					Application robustness	Provides flexibility in process conditions and reduces cost to use
Waterborne	DTM	Aquacron WPE	WPE72/ Pololak EKO serie	1K Polyester Melamine	Allows stripping without masking	Brings ease of use
					Direct to substrate	Optimizes footprint and through-output
Solventborne	DTM	Spectracron SPU	SPU5000 serie	2K Polyurethane	Application robustness	Reduces rework and cost to use
					Cost effective solution	Offers economical performance

* Requires adhesion promoter.



Performance					Substrates		VOCs with exempts			Cure			Application			
Quality	Corrosion	Durability	Appearance / Cosmetic	Intermix / Dispensability	Metal	Plastic*	≤ 250 g/L (≤ 2.1 lbs./gal)	< 420 g/L (< 3.5 lbs./gal)	≥ 420 g/L (≥ 3.5 lbs./gal)	Air Cure 25-60° C (77-140° F)	Low Cure 60-100° C (140-212° F)	High Cure >100° C (>212° F)	Conventional / HVLP	Airmix / Airless	Disk / Bell	Dip
Good	★★		★★		✓				✓	✓	✓		✓	✓		✓
Best		★★★	★★★★	✓	✓	✓	✓				✓		✓	✓		
Best			★★★★	✓	✓	✓		✓		✓			✓		✓	
Better	★★	★	★	✓	✓	✓	✓				✓		✓	✓		✓
Better	★	★★★★	★★★★	✓	✓	✓		✓		✓	✓		✓	✓		



General Industrial (continued)

Tikkurila Offerings

System	Coating Type	Product Name	Chemistry	Features >	< Potential Benefits to Customer
Waterborne	Primers	Fontecryl SC-MR 10	1K Acrylic	Self priming	Can be applied directly onto steel
				Fast drying	Enables rapid overcoating, thus shortening overall painting time
				Wide range of colors	Allows differentiation through color
		Fontezinc 85	2K Zinc Rich Epoxy	Offers cathodic protection of steel	A more environmentally friendly option for demanding corrosion protection
				For paint systems in severe environments	Protects assets in climatic conditions up to corrosivity class C5

Solventborne	Primers	Temazinc 77	2K Zinc Rich Epoxy	Zinc content fulfils the requirements of ISO standard 12944-5	Cost-efficient option for cathodic corrosion protection in severe environments
				For paint systems in severe climatic stress	Utilized in coating systems for enhanced longevity requirements.
		Temacoat GPL-S Primer	2K Epoxy	Excellent adhesion to various surfaces	A universal, all-round primer to reduce inventory
				Long overcoating interval	Recoatable without roughening up to 6 months
				Tintable, MED certified	Can be used for painting interior ship surfaces
		Temacoat HS-F Primer	2K Epoxy	Short overcoating time with polyurethane topcoats	Enables rapid overcoating with polyurethane topcoats, thus shortening overall painting time
Wide range of film thicknesses achievable in one layer	Eases the painting process of multiform structures				
		Good adhesion to steel, zinc and aluminum surfaces	Provides excellent corrosion protection for the paint system		

Solventborne	Adhesion promoters	Temanyl PVB Grey	1K Polyvinyl-butylal	Excellent adhesion to various surfaces	Ensures the durability of the entire painting system
				Very fast drying	Saves time during the application process
				Withstands temperatures up to +160°C (320 F)	Due to its high temperature resistance can be overcoated with powder coatings
	Temakeep	2K Epoxy	Excellent adhesion to steel, zinc, aluminium and stainless steel	Provides excellent corrosion protection for the paint system	
			Can be used on previously painted hard surfaces	Can be used as a barrier coat for other types of systems	
			Compatible with almost any type of paint	Extends the usage area and eases the painting process	

Performance					Substrates			VOCs with exempts			Cure		Application		
Quality	Corrosion	Durability	Appearance / Cosmetic	Colors/ tinting	Steel	Zinc	Aluminum	≤ 250 g/L (≤ 2.1 lbs./gal)	< 420 g/L (< 3.5 lbs./gal)	≥ 420 g/L (≥ 3.5 lbs./gal)	Normal 15-35°C (59-95 F)	Forced 35-80°C (95-176 F)	Conventional / HVLP	Airmix / Airtless	Dip
Better	★★	★★	★★★	Tintable	✓	✓	✓	✓			✓	✓	✓	✓	
Better	★★	★★	★★	Reddish grey	✓			✓			✓			✓	
Best	★★★	★★★	★★	Grey	✓					✓	✓	✓		✓	
Best	★★★	★★★	★★	Tintable	✓	✓	✓			✓	✓	✓		✓	
Best	★★★	★★★	★	Grey, red	✓	✓	✓	✓			✓	✓		✓	
Better	★★	★★	★★	Grey	✓	✓	✓			✓	✓	✓	✓	✓	✓
Better	★★	★★	★★★	Grey, white; limited tintability	✓	✓	✓			✓	✓		✓	✓	

General Industrial (continued)

Tikkurila Offerings

System	Coating Type	Product Name	Chemistry	Features >	< Potential Benefits to Customer
Waterborne	Topcoats	Fontedur HB 80	2K Polyurethane	Superior gloss and color retention	For environments with high demands on esthetics and resistance
				Durable and easy-to-clean surface	Retains the outlook of the painted object longer
				Waterborne product with low VOCs	More environmentally friendly than solventborne systems
		Fontedur Clear Plus	2K Polyurethane	Excellent weathering and abrasion resistance	Improved UV resistance extends product's lifespan
				Lower VOC emissions	More environmentally friendly than solventborne systems
				Very good spraying properties	Easier application with no need for thinning

Solventborne	Topcoats	Temadur 50	2K Polyurethane	Reliable technology	A time-proven, easy-to-use general purpose topcoat
				Good weather and abrasion resistance	Helps to prolong the life cycle of the painted object, even with metallic colors
				MED certified	Can be used for painting interior ship surfaces
		Temadur 90	2K Polyurethane	Superior gloss and color retention	Highlights the appearance of your assets
				Excellent weathering and abrasion resistance	Retains the outlook of the painted object longer, even with metallic colors
		Temadur HS 90	2K Polyurethane	Appearance of the painted surface close to that achieved with car finishes	Painted object will retain its aesthetically-pleasing film appearance even longer
				High-gloss paint film with one application	Enables faster throughput time and, therefore, more efficient production
				Excellent weathering and abrasion resistance	Prolongs the maintenance painting interval
		TEMATHANE® PC 50	2K Polyurethane	Excellent gloss and color retention	High-solids product to retain the outlook of the painted object longer
				For paint systems in severe climatic stress	Helps extending the service life of the paint system
				Excellent weather and abrasion resistance	Protects assets and increases product longevity
		Temathane PC 80	2K Polyurethane	Excellent gloss and color retention	High-solids product to retain the outlook of the painted object longer
				For paint systems in severe climatic stress	Helps extending the service life of the paint system
				Excellent weather and abrasion resistance	Protects assets and increases product longevity
		Temadur Clear	2K Polyurethane	Significantly improves the finishing coat	Provides extra protection to retain the outlook of your assets even longer
				MED certified	Can be used for painting interior ship surfaces
				Suitable for various surfaces	Adheres well to aluminium and zinc surfaces

Performance					Substrates			VOCs with exemptions			Cure		Application		
Quality	Corrosion	Durability	Appearance / Cosmetic	Colors/ tinting	Steel	Zinc	Aluminum	≤ 250 g/L (≤ 2.1 lbs./gal)	< 420 g/L (< 3.5 lbs./gal)	≥ 420 g/L (≥ 3.5 lbs./gal)	Normal 15-35°C (59-95 F)	Forced 35-80°C (95-176 F)	Conventional / HLP	Airmix / Airtless	Dip
Best		★★★★	★★★★★	Tintable				✓			✓	✓	✓	✓	
Best		★★★★	★★★★★	Clear				✓			✓		✓	✓	
Better		★★★★	★★★	Tintable						✓	✓	✓	✓	✓	
Better		★★★★★	★★★★★	Tintable	-	-	-			✓	✓	✓	✓	✓	
Best		★★★★★	★★★★★	Tintable	-	-	-			✓	✓	✓	✓	✓	
Best		★★★★★	★★★	Tintable	-	-	-			✓	✓	✓	✓	✓	
Best		★★★★★	★★★	Tintable	-	-	-			✓	✓	✓	✓	✓	
Best		★★★★	★★★★★	Clear	-	-	-			✓	✓	✓	✓	✓	

General Industrial (continued)

Tikkurila Offerings

System	Coating Type	Product Name	Chemistry	Features >	< Potential Benefits to Customer
Waterborne	DTM	Fontecryl SC-MR 10	1K Acrylic	Self priming	Can be applied directly onto steel
				Fast drying	Enables rapid overcoating, thus shortening overall painting time
				Wide range of colors	Allows differentiation through color
		Fontecryl SC 50	1K Acrylic	High film-building properties	Reduces application time and costs
				Single-coat paint	Enhances efficiency, easier to apply, and reduces application costs
				Wide range of colors	Allows differentiation through color
		Fontecryl SC-EF 50	1K Acrylic	Does not contain zinc phosphate	More environmentally friendly than traditional waterborne corrosion protection paints
				Self priming	Can be applied directly onto steel
				Great film building properties	Thick paint film with one application reduces application costs
		Fontecoat EP 50	2K Epoxy	Fast curing	May help speeding up the painting process and decrease the overall costs of the painting system
				Environmentally friendly (low VOC emissions)	An ideal option when a low VOC content is required
				Excellent adhesion and surface tolerance	Possible to achieve a very rapid production cycle
Fontecoat FD 20	2K Epoxy	Fast curing	May help speeding up the painting process and decrease the overall costs of the painting system		
		Self priming	Can be applied directly onto steel		
		Easy to apply	Can be applied in thick layers, thus enabling a faster painting process		

Solventborne	DTM	Temacoat RM 40	2K Epoxy	Can be used as a single-coat system	A universal product that helps to reduce inventory
				Also suitable for immersion	Protects the product in wet environment
		Temadur 10	2K Polyurethane	Can be used directly on metal	Enhances productivity, easier to apply, and reduces cost for steel, zinc, and aluminum surfaces
				Metallic colors in matt versions	Allows differentiation through color, even metallic colors
		MED certified	Can be used for painting interior ship surfaces		

Performance					Substrates			VOCs with exemptions			Cure		Application		
Quality	Corrosion	Durability	Appearance / Cosmetic	Colors/ tinting	Steel	Zinc	Aluminum	≤ 250 g/L (≤ 2.1 lbs./gal)	< 420 g/L (< 3.5 lbs./gal)	≥ 420 g/L (≥ 3.5 lbs./gal)	Normal 15-35°C (59-95 F)	Forced 35-80°C (95-176 F)	Conventional / HVLP	Airmix / Airless	Dip
Better	★★	★★	★★★	Tintable	✓	✓	✓	✓			✓	✓	✓	✓	
Better	★★	★★	★★★	Tintable	✓			✓			✓	✓	✓	✓	
Better	★★	★★	★★★	Tintable	✓			✓			✓	✓	✓	✓	
Better	★★★	★★★	★★	Tintable	✓			✓			✓	✓	✓	✓	
Best	★★★	★★★	★★	Tintable	✓			✓			✓	✓		✓	

Better	★★	★★★	★★	Tintable	✓	✓	✓		✓		✓	✓		✓	
Best	★★★	★★★	★★	Tintable	✓	✓	✓	-	-	✓	✓	✓	✓	✓	✓

General Industrial (continued)

Tikkurila Offerings

System	Coating Type	Product Name	Chemistry	Features >	< Potential Benefits to Customer
Solventborne	DTM	Temadur 20	2K Polyurethane	Can be used directly on metal	Enhances productivity, easier to apply, and reduces cost for steel, zinc, and aluminum surfaces
				Good weather and abrasion resistance	Helps to prolong the life cycle of the painted object
				MED certified	Can be used for painting interior ship surfaces
		Temadur SC-F 20	2K Polyurethane	Directly to metal	Enhances efficiency, easier to apply, and reduces application costs
				Fast curing	May help speeding up the painting process and decrease the overall costs of the painting system
				Good gloss and color retention	Forms a durable, easy-to-clean, non-chalking finish
		Temadur SC-F 50	2K Polyurethane	Directly to metal	Enhances efficiency, easier to apply, and reduces application costs
				Fast curing	May help speeding up the painting process and decrease the overall costs of the painting system
				Good gloss and color retention	Forms a durable, easy-to-clean, non-chalking finish
		Temadur SC-F 80	2K Polyurethane	Directly to metal	Enhances efficiency, easier to apply, and reduces application costs
				Fast curing	May help speeding up the painting process and decrease the overall costs of the painting system
				High film-building properties	Thick paint film with one application reduces application costs
		Dusolid 50	2K Oxirane Ester	Iso-cyanate free DTM product	An option when products containing iso-cyanate cannot be used
				Good corrosion resistance	Offers both protection and performance
				Easy to apply	As a high-solids product can be applied in thick layers, thus enabling faster production
		Temasilox	2K Polysiloxane	Excellent anti-corrosive properties	Protects your assets and increases the life cycle of the product
				Does not contain free isocyanates	Promotes a healthier working environment and has less impact on the environment
				High solids, VOC compliant	Remarkable reduction in solvent emissions
		Temaline EPL 100	2K Epoxy Phenolic	High temperature resistance	Withstands immersion in hot water up to +90°C (194 F) and dry heat up to +150°C (302 F)
				High chemical resistance	Protects your assets exposed to chemical stress
		Temaspart HS-SC 80	2k Polyaspartic	Fast curing	Maximises production throughput at normal room temperature resulting in lower energy costs
Good anti-corrosive properties	For prolonging the service life of your product				
Low VOC	Provides significant reductions in solvent emission				

Performance					Substrates			VOCs with exemptions			Cure		Application		
Quality	Corrosion	Durability	Appearance / Cosmetic	Colors/ tinting	Steel	Zinc	Aluminum	≤ 250 g/L (≤ 2.1 lbs./gal)	< 420 g/L (< 3.5 lbs./gal)	≥ 420 g/L (≥ 3.5 lbs./gal)	Normal 15-35°C (59-95 F)	Forced 35-80°C (95-176 F)	Conventional / HVLP	Airmix / Airless	Dip
Best	★★★	★★★	★★	Tintable	✓	✓	✓			✓	✓		✓	✓	
Best	★★★	★★★	★★	Tintable	✓				✓		✓	✓	✓	✓	
Best	★★★	★★★	★★	Tintable	✓	✓			✓		✓	✓	✓	✓	
Best	★★★	★★★	★★★	Tintable	✓				✓		✓	✓	✓	✓	
Good	★★	★★	★★	Tintable	✓				✓		✓	✓	✓	✓	
Best	★★★	★★	★★★	TS Premium	✓				✓		✓	✓		✓	
Best	★★★	★★★★	★★	White, beige, light grey, limited tintability	✓				✓		✓		✓		
Best	★★★	★★	★★★	Tintable	✓				✓		✓		✓	✓	

Appliance

PPG's coatings provide major commercial and household appliance manufacturers with protective coatings that enhance durability, color and style for their equipment. With a comprehensive range of water- and solventbased liquid coatings, PPG ensures color harmony, application efficiency and long-lasting resiliency. PPG's color stylists and designers create trend-forward palettes and finishes, while engineers develop innovations that offer hardness, flexibility and excellent resistance to stains, scratches, chemicals and corrosion.

PPG Offerings

System	Coating Type	Product Name	Product Identifier	Chemistry	Features >	< Potential Benefits to Customer
Waterborne	Primer	Aquacron WPR	WPR26/ WPR72 serie	1K Polyester Melamine	Smooth surface	Offers perfect finish
					Proven robustness	Generates less rework and optimizes cost to use
Solventborne	Basecoat	Durethane XPB	XPB serie	1K Acrylic	Vast color database	Allows differentiation through color
					Application robustness	Provides flexibility in process conditions and reduces cost to use
Waterborne	DTM	Aquacron WPE	WPE72/ Pololak EKO serie	1K Polyester Melamine	Allows stripping without masking	Brings ease of use
					Direct to substrate	Optimizes footprint and through-output

* Requires adhesion promoter.



Performance					Substrates		VOCs with exempts			Cure			Application			
Quality	Corrosion	Durability	Appearance / Cosmetic	Intermix / Dispensability	Metal	Plastic*	≤ 250 g/L (≤ 2.1 lbs./gal)	< 420 g/L (< 3.5 lbs./gal)	≥ 420 g/L (≥ 3.5 lbs./gal)	Air Cure 25-60° C (77-140° F)	Low Cure 60-100° C (140-212° F)	High Cure >100° C (>212° F)	Conventional / HVL P	Airmix / Airtless	Disk / Bell	Dip
Best	★★★		★		✓		✓					✓	✓		✓	✓
Best			★★★★	✓	✓	✓		✓		✓			✓		✓	
Better	★★	★	★	✓	✓	✓	✓					✓	✓	✓		✓



Bicycle

PPG's color stylists and designers propose new colors and finishes inspired by fashion and other industries that become the latest trends of the year and respond to diverse consumer types and choices. From glossy to extremely matte finishes, PPG's full range of colors will enable you to create unique bicycles and build your own image. From primers to touch up products, through basecoats and topcoats, PPG's water-based coatings, small batch production capabilities enables PPG to deliver quickly any quantities requested.

PPG Offerings

System	Coating Type	Product Name	Product Identifier	Chemistry	Features >	< Potential Benefits to Customer
Waterborne	Primer	Aquacron WPR	WPR26/ WPR72 serie	1K Polyester Melamine	Smooth surface	Offers perfect finish
					Proven robustness	Generates less rework and optimizes cost to use

Waterborne	Basecoat	Aquacron WPE	WPE/ 135HV serie	1K Polyester Melamine	Large color database	Allows differentiation through color
					On customer site production	Increases responsiveness on color and reduces inventory
Solventborne	Basecoat	Durethane XPB	XPB serie	1K Acrylic	Vast color database	Allows differentiation through color
					Application robustness	Provides flexibility in process conditions and reduces cost to use

* Requires adhesion promoter.



Performance					Substrates		VOCs with exempts			Cure			Application			
Quality	Corrosion	Durability	Appearance / Cosmetic	Intermix / Dispensability	Metal	Plastic*	≤ 250 g/L (≤ 2.1 lbs./gal)	< 420 g/L (< 3.5 lbs./gal)	≥ 420 g/L (≥ 3.5 lbs./gal)	Air Cure 25-60° C (77-140° F)	Low Cure 60-100° C (140-212° F)	High Cure >100° C (>212° F)	Conventional / HVL	Airmix / Airless	Disk / Bell	Dip
Best	★★★		★		✓		✓					✓	✓		✓	✓
Best			★★★★	✓	✓		✓					✓	✓		✓	
Best			★★★★	✓	✓	✓		✓		✓			✓		✓	



Transportation

PPG's transportation coatings are built for the long haul on the toughest on-road and off-road terrain. PPG protects its customers' most valuable assets by engineering paints and coatings that extend the life of vehicles through world-class corrosion protection, enduring color and long-lasting gloss.

PPG Offerings

System	Coating Type	Product Name	Product Identifier	Chemistry	Features >	< Potential Benefits to Customer
Solventborne	Primers	Tikkurila	SPRZ77/ Temazinc serie	2K Zinc Rich Epoxy	High corrosion performance	Protects assets and increases product longevity
					Smooth surface	Allows differentiation through final appearance
		SPECTRACRON® SPR	SPR91 serie	2K Epoxy	High corrosion performance on multisubstrate	Protects assets and increases product longevity
					Common hardener with topcoat	Reduces complexity and inventory
		Spectracron SPR	SPR53 serie	2K Epoxy	Application robustness	Flexibility in process conditions
					High corrosion protection	Protects surfaces with high blast profiles
		Spectracron SPR	SPR63 serie	2K Epoxy	Application robustness	Flexibility in process conditions
					Cost vs. performance	Protects surfaces with high blast profiles
		Spectracron SPR	SPR64 serie	2K Epoxy	Fast wet on wet application	Optimizes footprint and through-output
					Common hardener with topcoat	Reduces complexity and inventory
Multi OEM approvals	Protects assets and increases product longevity					
Waterborne	Topcoat	Aquacron WPUT	WPUT serie	2K Polyurethane	Application robustness	Lowers application cost and rework
Solventborne	Topcoat	Spectracron SPU	SPU5000 serie	2K Polyurethane	High UV durability	Protects assets and increases product longevity
					Application robustness	Reduces rework and cost to use
					Good performance	Offers economical performance
		SPECTRACRON® XP	XP serie	2K Polyurethane	Wide color palette	Allows differentiation through color
					Application robustness	Reduces rework and cost to use
					Good performance	Offers economical performance
		Spectracron® BHS	BHS serie	2K Polyurethane	Wide color palette	Allows differentiation through color
					Superior appearance and yield	Allows differentiation through appearance
					Superior performance and multi OEM approval	Protects assets and increases product longevity
					Wide application window and application robustness	Reduces rework cost and lowers cost to use
High solid and low VOC	Offers a sustainable coating system					
Solventborne	Basecoat	Durethane XPB	XPB serie	1K Acrylic	Vast color database	Allows differentiation through color
					Application robustness	Provides flexibility in process conditions and reduces cost to use
Solventborne	DTM	Spectracron SPU	SPU5000 serie	2K Polyurethane	Application robustness	Reduces rework and cost to use
					Cost-effective solution	Offers economical performance

Performance					Substrates		VOCs with exemptions			Cure			Application			
Quality	Corrosion	Durability	Appearance / Cosmetic	Intermix / Dispensability	Metal	Plastic*	≤ 250 g/L (≤ 2.1 lbs./gal)	< 420 g/L (< 3.5 lbs./gal)	≥ 420 g/L (≥ 3.5 lbs./gal)	Air Cure 25-60° C (77-140° F)	Low Cure 60-100° C (140-212° F)	High Cure >100° C (>212° F)	Conventional / HVLP	Airmix / Airtless	Disk / Bell	Dip
Best	★★★★★		★		✓	✓			✓	✓			✓	✓		
Best	★★★★★		★★★		✓	✓		✓		✓			✓	✓		
Better	★★★★★		★★		✓			✓		✓	✓		✓	✓		
Better	★★★		★★★		✓	✓			✓	✓	✓		✓	✓		
Better	★★★		★★		✓				✓	✓	✓		✓	✓		
Best		★★★	★★★★★	✓	✓	✓	✓				✓		✓	✓		
Better		★★★	★★★	✓	✓	✓		✓		✓	✓		✓	✓		
Best		★★★	★★★★★	✓	✓	✓		✓		✓	✓		✓	✓		
Best			★★★★★	✓	✓	✓			✓	✓			✓		✓	
Better	★	★★★	★★★	✓	✓	✓		✓		✓	✓		✓	✓		

* Requires adhesion promoter.

Transportation (continued)

Tikkurila Offerings

System	Coating Type	Product Name	Chemistry	Features >	< Potential Benefits to Customer
Waterborne	Primers	Fontecryl SC-MR 10	1K Acrylic	Self priming	Can be applied directly onto steel
				Fast drying	Enables rapid overcoating, thus shortening overall painting time
				Wide range of colors	Allows differentiation through color
Solventborne	Primers	Temazinc 77	2K Zinc Rich Epoxy	Zinc content fulfils the requirements of ISO standard 12944-5	Cost-efficient option for cathodic corrosion protection in severe environments
				For paint systems in severe climatic stress	Utilized in coating systems for enhanced longevity requirements.
		Temacoat GPL-S Primer	2K Epoxy	Excellent adhesion to various surfaces	A universal, all-round primer to reduce inventory
				Long overcoating interval	Recoatable without roughening up to 6 months
				Tintable, MED certified	Can be used for painting interior ship surfaces
Solventborne	Adhesion promoters	Temanyl PVB Grey	1K Polyvinyl-butylal	Excellent adhesion to various surfaces	Ensures the durability of the entire painting system
				Very fast drying	Saves time during the application process
				Withstands temperatures up to +160°C	Due to its high temperature resistance can be overcoated with powder coatings
		Temakeep	2K Epoxy	Excellent adhesion to steel, zinc, aluminium and stainless steel	Provides excellent corrosion protection for the paint system
				Can be used on previously painted hard surfaces	Can be used as a barrier coat for other types of systems
				Compatible with almost any type of paint	Extends the usage area and eases the painting process
Waterborne	Topcoats	Fontedur HB 80	2K Polyurethane	Superior gloss and color retention	For environments with high demands on esthetics and resistance
				Durable and easy-to-clean surface	Retains the outlook of the painted object longer
				Waterborne product with low VOCs	More environmentally friendly than solventborne systems
		Fontedur Clear Plus	2K Polyurethane	Excellent weathering and abrasion resistance	Improved UV resistance extends product's lifespan
				Lower VOC emissions	More environmentally friendly than solventborne systems
				Very good spraying properties	Easier application with no need for thinning

Performance					Substrates			VOCs with exempts			Cure		Application		
Quality	Corrosion	Durability	Appearance / Cosmetic	Colors/ tinting	Steel	Zinc	Aluminum	≤ 250 g/L (≤ 2.1 lbs./gal)	< 420 g/L (< 3.5 lbs./gal)	≥ 420 g/L (≥ 3.5 lbs./gal)	Normal 15-35°C (59-95 F)	Forced 35-80°C (95-176 F)	Conventional / HVL	Airmix / Airless	Dip
Better	★★	★★	★★★	Tintable	✓	✓	✓	✓			✓	✓	✓	✓	
Best	★★★	★★★	★★	Grey	✓				✓		✓	✓		✓	
Best	★★★	★★★	★★	Tintable	✓	✓	✓			✓	✓	✓		✓	
Better	★★	★★	★★	Grey	✓	✓	✓			✓	✓	✓	✓	✓	✓
Better	★★	★★	★★★	Grey, white, limited tintability	✓	✓	✓			✓	✓	✓	✓	✓	
Best		★★★	★★★★	Tintable	-	-	-	✓			✓	✓	✓	✓	
Best		★★★	★★★★	Clear	-	-	-	✓			✓	✓	✓	✓	

Tikkurila Offerings

System	Coating Type	Product Name	Chemistry	Features >	< Potential Benefits to Customer
Solventborne	Topcoats	Temadur 50	2K Polyurethane	Reliable technology	A time-proven, easy-to-use general purpose topcoat
				Good weather and abrasion resistance	Helps to prolong the life cycle of the painted object, even with metallic colors
				MED certified	Can be used for painting interior ship surfaces
		Temadur 90	2K Polyurethane	Superior gloss and color retention	Highlights the appearance of your assets
				Excellent weathering and abrasion resistance	Retains the outlook of the painted object longer, even with metallic colors
		Temadur HS 90	2K Polyurethane	Appearance of the painted surface close to that achieved with car finishes	Painted object will retain its aesthetically-pleasing film appearance even longer
				High-gloss paint film with one application	Enables faster throughput time and, therefore, more efficient production
				Excellent weathering and abrasion resistance	Prolongs the maintenance painting interval
		Temathane PC 50	2K Polyurethane	Excellent gloss and color retention	High-solids product to retain the outlook of the painted object longer
				For paint systems in severe climatic stress	Helps extending the service life of the paint system
				Excellent weather and abrasion resistance	Protects assets and increases product longevity
		Temathane PC 80	2K Polyurethane	Excellent gloss and color retention	High-solids product to retain the outlook of the painted object longer
				For paint systems in severe climatic stress	Helps extending the service life of the paint system
				Excellent weather and abrasion resistance	Protects assets and increases product longevity
		Temadur Clear	2K Polyurethane	Significantly improves the finishing coat	Provides extra protection to retain the outlook of your assets even longer
MED certified	Can be used for painting interior ship surfaces				
Suitable for various surfaces	Adheres well to aluminium and zinc surfaces				

Performance					Substrates			VOCs with exemptions			Cure		Application		
Quality	Corrosion	Durability	Appearance / Cosmetic	Colors/ tinting	Steel	Zinc	Aluminum	≤ 250 g/L (≤ 2.1 lbs./gal)	< 420 g/L (< 3.5 lbs./gal)	≥ 420 g/L (≥ 3.5 lbs./gal)	Normal 15-35°C (59-95 F)	Forced 35-80°C (95-176 F)	Conventional / HVLP	Airmix / Airless	Dip
Better		★★★	★★★	Tintable	-	-	-			✓	✓	✓	✓		
Better		★★★★	★★★★	Tintable	-	-	-			✓	✓	✓	✓		
Best		★★★★	★★★★	Tintable	-	-	-		✓		✓	✓	✓	✓	
Best		★★★★★	★★★	Tintable	-	-	-		✓		✓	✓	✓	✓	
Best		★★★★	★★★	Tintable	-	-	-		✓		✓	✓	✓	✓	
Best		★★★★	★★★★	Clear	-	-	-			✓	✓	✓	✓	✓	

Transportation (continued)

Tikkurila Offerings

System	Coating Type	Product Name	Chemistry	Features >	< Potential Benefits to Customer
Waterborne	DTM	Fontecryl SC-MR 10	1K Acrylic	Self priming	Can be applied directly onto steel
				Fast drying	Enables rapid overcoating, thus shortening overall painting time
				Wide range of colors	Allows differentiation through color
		Fontecryl SC 50	1K Acrylic	High film-building properties	Reduces application time and costs
				Single-coat paint	Enhances efficiency, easier to apply, and reduces application costs
				Wide range of colors	Allows differentiation through color
		Fontecryl SC-EF 50	1K Acrylic	Does not contain zinc phosphate	More environmentally friendly than traditional waterborne corrosion protection paints
				Self priming	Can be applied directly onto steel
				Great film building properties	Thick paint film with one application reduces application costs
		Fontecoat EP 50	2K Epoxy	Fast curing	May help speeding up the painting process and decrease the overall costs of the painting system
				Environmentally friendly (low VOC emissions)	An ideal option when a low VOC content is required
				Excellent adhesion and surface tolerance	Possible to achieve a very rapid production cycle
Fontecoat FD 20	2K Epoxy	Fast curing	May help speeding up the painting process and decrease the overall costs of the painting system		
		Self priming	Can be applied directly onto steel		
		Easy to apply	Can be applied in thick layers, thus enabling a faster painting process		

Performance					Substrates			VOCs with exempts			Cure		Application		
Quality	Corrosion	Durability	Appearance / Cosmetic	Colors/ tinting	Steel	Zinc	Aluminum	≤ 250 g/L (≤ 2.1 lbs./gal)	< 420 g/L (< 3.5 lbs./gal)	≥ 420 g/L (≥ 3.5 lbs./gal)	Normal 15-35°C (59-95 F)	Forced 35-80°C (95-176 F)	Conventional / HVLP	Airmix / Airtless	Dip
Better	★★	★★	★★★★	Tintable	✓	✓	✓	✓			✓	✓	✓	✓	
Better	★★	★★	★★★★	Tintable	✓			✓			✓	✓	✓	✓	
Better	★★	★★	★★★★	Tintable	✓			✓			✓	✓	✓	✓	
Better	★★★★	★★★★	★★	Tintable	✓			✓			✓	✓	✓	✓	
Best	★★★★	★★★★	★★	Tintable	✓			✓			✓	✓		✓	

Transportation (continued)

Tikkurila Offerings

System	Coating Type	Product Name	Chemistry	Features >	< Potential Benefits to Customer
Solventborne	DTM	Temadur 10	2K Polyurethane	Can be used directly on metal	Enhances productivity, easier to apply, and reduces cost for steel, zinc, and aluminum surfaces
				Metallic colors in matt versions	Allows differentiation through color, even metallic colors
				MED certified	Can be used for painting interior ship surfaces
		Temadur 20	2K Polyurethane	Can be used directly on metal	Enhances productivity, easier to apply, and reduces cost for steel, zinc, and aluminum surfaces
				Good weather and abrasion resistance	Helps to prolong the life cycle of the painted object
				MED certified	Can be used for painting interior ship surfaces
		Temadur SC-F20	2K Polyurethane	Directly to metal	Enhances efficiency, easier to apply, and reduces application costs
				Fast curing	May help speeding up the painting process and decrease the overall costs of the painting system
				Good gloss and color retention	Forms a durable, easy-to-clean, non-chalking finish
		Temadur SC-F50	2K Polyurethane	Directly to metal	Enhances efficiency, easier to apply, and reduces application costs
				Fast curing	May help speeding up the painting process and decrease the overall costs of the painting system
				Good gloss and color retention	Forms a durable, easy-to-clean, non-chalking finish
		Temadur SC-F80	2K Polyurethane	Directly to metal	Enhances efficiency, easier to apply, and reduces application costs
				Fast curing	May help speeding up the painting process and decrease the overall costs of the painting system
				High film-building properties	Thick paint film with one application reduces application costs
		Temasilox	2K Polysiloxane	Excellent anti-corrosive properties	Protects your assets and increases the life cycle of the product
				Does not contain free isocyanates	Promotes a healthier working environment and has less impact on the environment
				High solids, VOC compliant	Remarkable reduction in solvent emissions
		Temaspart HS-SC 80	2K Polyaspartic	Fast curing	Maximises production throughput at normal room temperature resulting in lower energy costs
				Good anti-corrosive properties	For prolonging the service life of your product
				Low VOC	Provides significant reductions in solvent emission

Performance					Substrates			VOCs with exemptions			Cure		Application		
Quality	Corrosion	Durability	Appearance / Cosmetic	Colors/ tinting	Steel	Zinc	Aluminum	≤ 250 g/L (≤ 2.1 lbs./gal)	< 420 g/L (< 3.5 lbs./gal)	≥ 420 g/L (≥ 3.5 lbs./gal)	Normal 15-35°C (59-95 F)	Forced 35-80°C (95-176 F)	Conventional / HVLP	Airmix / Airtless	Dip
Best	★★★★	★★★★	★★	Tintable	✓	✓	✓			✓	✓		✓	✓	
Best	★★★★	★★★★	★★	Tintable	✓	✓	✓			✓	✓		✓	✓	
Best	★★★★	★★★★	★★	Tintable	✓			✓			✓	✓	✓	✓	
Best	★★★★	★★★★	★★	Tintable	✓	✓		✓			✓	✓	✓	✓	
Best	★★★★	★★★★	★★★★	Tintable	✓			✓			✓	✓	✓	✓	
Best	★★★★	★★	★★★★	TS Premium	✓			✓			✓	✓		✓	
Best	★★★★	★★	★★★★	Tintable	✓			✓			✓		✓	✓	



PPG: WE PROTECT AND BEAUTIFY THE WORLD®



A trusted global coatings leader

Operations in 70 countries



Renowned color expertise

Trend-setting palettes for home, kitchen, auto and industry paired with unrivaled color matching



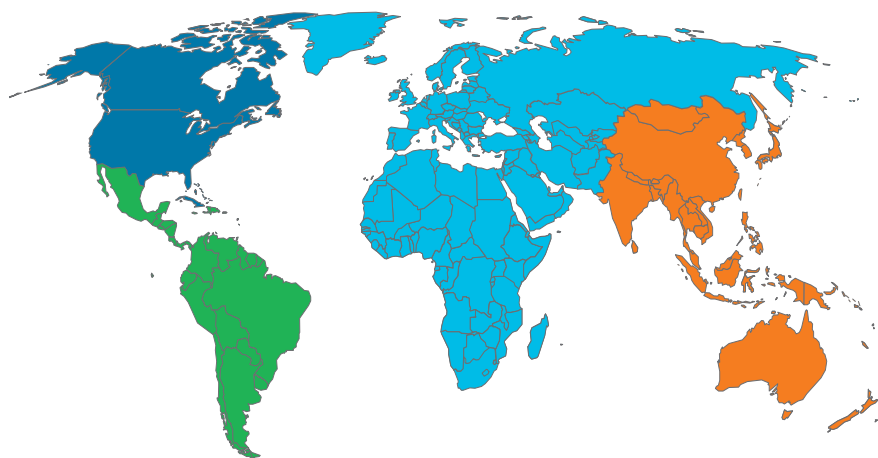
Commitment to sustainability

Over 41% of annual sales from sustainably advantaged products and processes



Dedication to innovation

Over 30 R&D@ 100 Awards received.



Industrial coatings from PPG

- World-class technical services and training
- Help meeting specific, coatings-related environmental mandates
- Assistance setting up new equipment and identifying areas where your processes may be streamlined
- Troubleshooting production issues
- SECURE LAUNCH EXCELLENCE® accelerated custom product formulation and color development process

To learn more about PPG, please visit us online at www.ppg.com/industrialcoatings, or contact one of the international sales offices listed below.

PPG Regional Headquarters

■ PPG Global Headquarters / PPG North America
Pittsburgh, PA USA
ic-na@ppg.com

■ PPG Latin America
Sumare, Sao Paulo, Brazil
ic-latam@ppg.com

■ PPG Europe, Middle East and Africa
Rolle, Switzerland
ic-emea@ppg.com

■ PPG Asia Pacific
Hong Kong, China
ic-ap@ppg.com

■ PPG China HQ
Shanghai, China
ic-cn@ppg.com

The preferred product offering guides will be reviewed periodically for updates. Please contact ic-emea@ppg.com to send suggestions or request changes.

The technical data presented in this document is based upon information believed by PPG to be currently accurate. However, no guarantees of accuracy, comprehensiveness or performance are given or implied. Continuous improvements in coatings technology may cause future technical data to vary from what is presented in this document. Contact your PPG representative for the most up-to-date information.

The PPG Logo, We protect and beautify the world, DuraBack, Duranar, Spectracron and Secure Launch Excellence are registered trademarks and Aquacron, Durabrite, Durastar, Duraprime, are trademarks of PPG Industries Ohio, Inc.. Fontecoat, Duasolid, Temaspart and Temathane are registered trademarks of Tikkurila. R&D is a registered trademark of Advance Business Media LLC. The IN Logo is a registered trademark of LinkedIn Corporation. ©2025 PPG Industries, Inc. All rights reserved 05/2025 IC348

