

PAINTMANAGER® XI

Paint Shop Interface Folder Configuration

Create Folders

1 Navigate to the Computer C:\PPG folder and create the following folders.

- ⇒ C:\PPG\PaintShopInterface
- ⇒ C:\PPG\PaintShopInterface\FromBSMS
- ⇒ C:\PPG\PaintShopInterface\FromBSMS\Archive
- ⇒ C:\PPG\PaintShopInterface\ToBSMS

Share Folder

2 Navigate to and open the Computer “C:\PPG” folder.

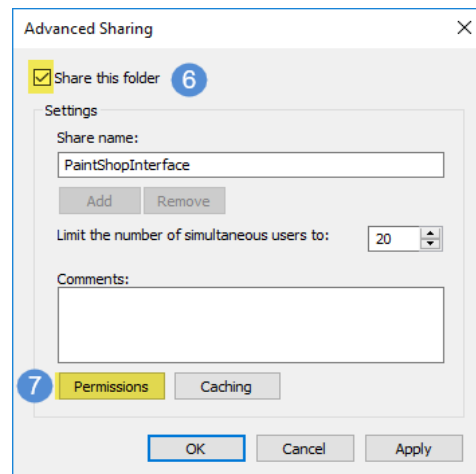
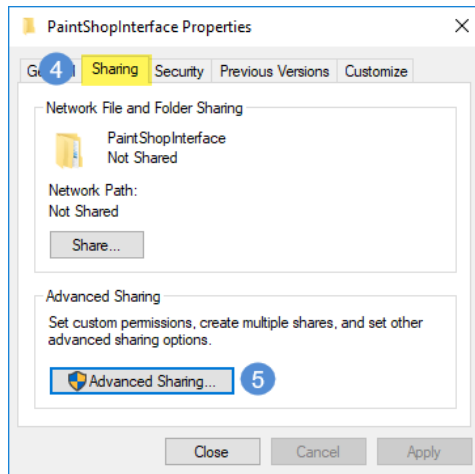
3 Right-Click on the **PaintShopInterface** folder and select **Properties**.

4 Select the **Sharing** tab.

6 Check the box next to **Share this folder**.

5 Select the **Advanced Sharing** button.

7 Select the **Permissions** button.

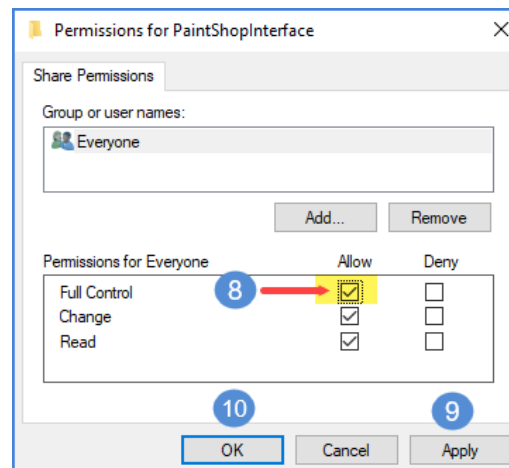


8 Check the box under **Allow** for **Full Control**.

9 Select the **Apply** button.

10 Select the **OK** button.

11 Select **Apply** and **OK** on the next screen.



(Continued on the other side)

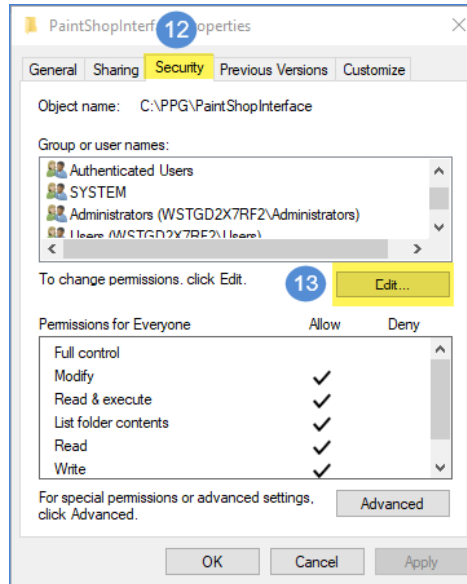
PAINTMANAGER® XI

Paint Shop Interface Folder Configuration

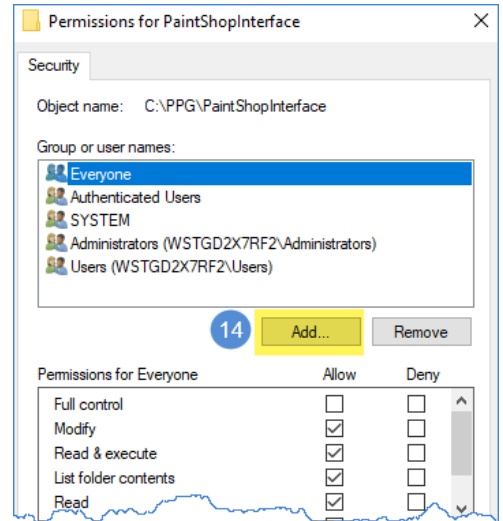
Folder Security Settings

12 Select the **Security** tab.

13 Select **Edit**.



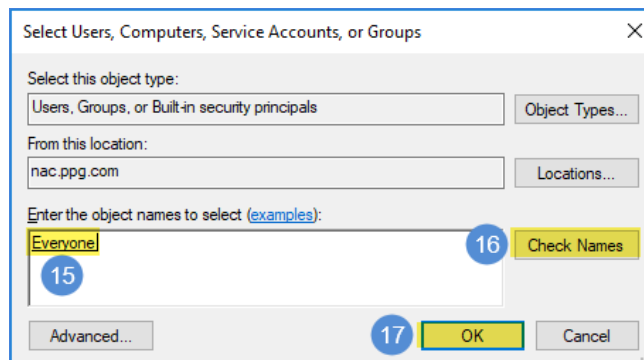
14 Select the **Add** button.



15 Enter the name **Everyone**.

16 Select **Check Names**.

17 Select **OK**.

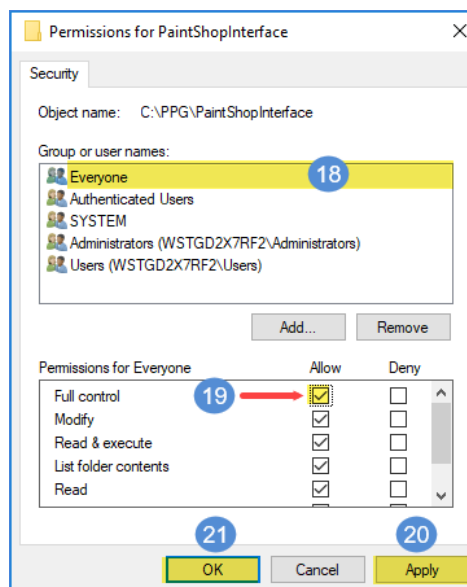


18 Select **Everyone**.

19 Check **Allow Full Control**.

20 Select **Apply**.

21 Select **OK**.



22 Select **Apply** and **OK** on the next screen.