

Pavement markings



Engineered to provide performance, lasting value and extended life to your pavement marking program

Pre-cut ENNIS-FLINT® by PPG PREMARK® pavement markings are formulated with high-quality resin, binder and aggregate for year-round application in any temperature.

Depending upon regulatory requirements or specific application purposes, *PreMark* pavement markings can be manufactured with visibility boosting retroreflective beads and/or safety enhancing anti-skid elements.



Design

- Lasts 6 to 8 times longer than paint with a clean, crisp appearance
- Impervious to oil and gasoline
- Made with up to 60% recycled material
- 24-month shelf life



Installation

- No surface preheating required, allowing for year-round application
- Precut and ready to use
- No specialty equipment or expensive custom tools needed
- Can be modified or repaired in the field with a razor knife or heavy-duty scissors



Pedestrian Safety

- Available with reflective beads and/or anti-skid elements distributed evenly throughout material for enhanced visibility and slip resistance
- As material wears, new beads or anti-skid elements are exposed depending upon manufacturing option



Compliance/Certification

- ADA-compliant pedestrian and wheelchair friendly surface
- Facility is ISO 9001:2015 certified for the design, development and manufacturing of preformed thermoplastic

Installation

PreMark materials can be applied with an industrial propane heat torch. Regularly spaced indents in the material indicate when the required molten state, satisfactory adhesion and proper bead embedment have been achieved. A recommended sealer is required when applying *PreMark* material on concrete surfaces and for large, multi-colored specialty markings and colorized lanes.

Need ideas? Your PPG sales representative can provide no-cost demo and application training for proper application techniques.



Step 1: Prepare



Step 2: Position



Step 3: Heat

Standard Regulatory Colors



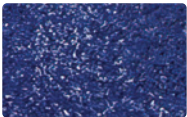
Black



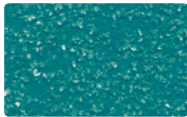
Grey



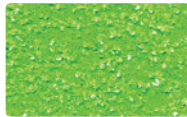
White



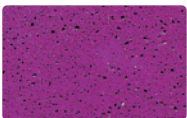
Blue



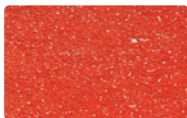
Green



Bike Lane Green



Purple



Orange



Yellow



Red

Manufacturing Options



Material before heating



Material after heating with ideal 60% glass bead embedment for optimal performance

BD: Beaded

Factory-applied surface and intermix beads are uniformly distributed at time of manufacturing. As the marking wears, new beads are exposed.

NB: Non-Beaded

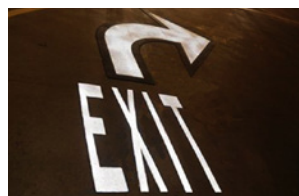
No factory-applied surface beads, typically used for reversible arrows where beads are dispersed evenly over surface during field application.

VG: VIZIGRIP® visibility and anti-skid treatment

Surface beads and anti-skid elements maximize skid resistance and retroreflectivity. Used for crosswalks, bike symbols, accessibility markings, interstate shields, and other pedestrian uses.

SK: Skid Only

Anti-skid elements are on the surface and in the intermix for enhanced skid resistance; no glass beads. Primary purpose is for colored preferential lane treatments if retroreflectivity is not required.



WARNING: Certain colors of this product may contain chemicals known to the State of California to cause cancer and/or reproductive harm. For more information go to P65Warnings.ca.gov.

This document contains general information only and should not be construed as creating any warranties, express or implied. Please contact a PPG representative for additional information.

The PPG Logo and *We protect and beautify the world* are registered trademarks of PPG Industries Ohio, Inc. *Ennis-Flint*, *PreMark* and *ViziGrip* are registered trademarks of the PPG Group of Companies. The *IN Logo* is a registered trademark of LinkedIn Corporation. ©2025 PPG Industries, Inc. All rights reserved. 10/25 TS005

