

# Total Solutions Provider

Multi-surface solutions for architectural design and development from a global, specialty coatings leader



We protect and beautify the world®

# Total solutions from a single partner

At PPG, we work every day to develop and deliver the paints, coatings and specialty materials that our customers have trusted for more than 140 years.

Driven by a commitment to innovation, collaboration and service, PPG is a global-leading supplier of high-performance coatings. We partner with our customers to find solutions that solve their toughest challenges and take their products to the next level.

With global headquarters in Pittsburgh, Pennsylvania, PPG also has regional headquarters in Rolle, Switzerland; Shanghai, China and Dubai, United Arab Emirates. We serve customers in construction, consumer products, industrial, transportation markets and aftermarkets.

To learn more, visit [ppg.com/industrialcoatings](http://ppg.com/industrialcoatings)

## PPG's Offerings

### Solutions



#### Liquid Coatings

From general industrial and transportation to architectural building components and heavy duty equipment:

- Durability • Beauty
- Functionality • Solvent- and waterborne
- Versatility



#### Powder Coatings

PPG is one of the world's leading pioneers of powder coating innovations:

- Highly durable • Efficient finishing
- Sustainable • Aesthetically pleasing
- Enhances performance and appearance

### Industry areas



#### Coil and Extrusion

From metal roofing, extruded profiles and wall panels to HVAC equipment and general industrial components:

- Balance of beauty and protection
- Engineered to withstand the most demanding residential, commercial and industrial settings and environmental conditions

## Product Offering - Building Example



Cladding, Wall Panels

Windows, Facades, Door Frames

### Cladding Wall Panels

**Powder Durability:**

Excellent resistance to corrosion, UV radiation, chipping and scratching.

**Liquid Color Retention:**

Excellent UV resistance and long-lasting color.

**Coil Finish:**

Consistent quality and appearance across large surfaces, offering multiple performance levels and strong protection against fading, corrosion and chemical exposure.

### Windows, Facades, Door Frames

FGIA/AAMA and Qualicoat certified powder and liquid coatings.

**Additional protection:**

Preserves long-term aesthetic integrity with resilient color, gloss and finish.



# Liquid PVDF

STANDARD	SOLVENTBORNE OR WATERBORNE	COATING TYPE	PRODUCT NAME	PRODUCT IDENTIFIER	CHEMISTRY	KEY PRODUCT FEATURES	POTENTIAL UNIQUE BENEFIT	DURABILITY	UV CLASS	ALUMINUM	STEEL
FGIA/AAMA 2605-certified	Solventborne	Topcoat	Duramar®	IF	70% PVDF, Solid colors	<ul style="list-style-type: none"> <li>Outstanding UV durability (color and chalk resistance)</li> <li>Superior corrosion resistance</li> <li>High flexibility with a tough and hard finish</li> <li>Intermix capabilities</li> <li>Non-flammable</li> </ul>	<ul style="list-style-type: none"> <li>Maintains quality and aesthetics for a long time</li> <li>Reduces coatings failure and warranty claims</li> <li>Reduces damages during handling and installation</li> <li>Fast delivery/color availability</li> </ul>	★★★★★	RUV4	●	●
FGIA/AAMA 2605-certified	Solventborne	Topcoat	Duramar	IF Sunstorm®	70% PVDF, Special effect colors	<ul style="list-style-type: none"> <li>Mica formulations for pearlescent/metalescent finish</li> <li>Intermix capabilities</li> </ul>	<ul style="list-style-type: none"> <li>Eliminates cost of aluminum flakes or additional coats</li> <li>Fast delivery/color availability</li> </ul>	★★★★★	RUV4	●	●
FGIA/AAMA 2605-certified	Solventborne	Clearcoat	Duramar	IF XL/MXL	70% PVDF with PVDF clearcoat or mica-tinted PVDF clearcoat	<ul style="list-style-type: none"> <li>Additional corrosion protection when used over Duramar topcoats</li> <li>Good stain resistance</li> <li>Intermix capabilities</li> <li>Non-flammable</li> </ul>	<ul style="list-style-type: none"> <li>Protects and extends aesthetics of metallic colors</li> <li>Reduces maintenance time and costs</li> <li>Fast delivery/color availability</li> </ul>	★★★★★	RUV4	●	●

# Powder

STANDARD	COATING TYPE	PRODUCT NAME	PRODUCT IDENTIFIER	CHEMISTRY	KEY PRODUCT FEATURES	POTENTIAL UNIQUE BENEFIT	QUALITY	CORROSION	DURABILITY	MECHANICAL PROPERTIES	ALUMINUM	STEEL
FGIA/AAMA 2604-certified Qualicoat Class 2	Topcoats, Exterior	Envirocron®	PCS – P2 series	Polyester architectural superdurable matte, fine textured and gloss	<ul style="list-style-type: none"> <li>Very high level of exterior super-durability and color control</li> <li>Ample range of gloss finishes, including matte and fine textured</li> <li>Designed for architectural markets - Qualicoat Class 2 and GSB Master</li> </ul>	<ul style="list-style-type: none"> <li>Protects and retains product color and appearance</li> <li>Allows product differentiation</li> <li>Meets most stringent architectural standards</li> </ul>	Better	★★	★★★★★	★★★	●	●
FGIA/AAMA 2605-certified Qualicoat Class 3	Topcoat	Corafon® Platinum	PCN Series	FEVE fluoropolymer	<ul style="list-style-type: none"> <li>One-coat fluoropolymer coating</li> <li>Ultradurable quality</li> <li>For premium exterior use</li> <li>Available in a wide range of colors, glosses, micas and bonded metallics</li> <li>High transfer efficiency: &gt; 20% improvement over standard FEVE leading to significantly less waste</li> <li>Extended gloss range from 5-85. (vs. 25-70 for FEVE product)</li> <li>Anodized appearance is achievable with <i>Corafon</i> Platinum due to low gloss capability</li> <li>Non-flammable</li> </ul>	<ul style="list-style-type: none"> <li>Meets highest architectural standards                             <ul style="list-style-type: none"> <li>✓ 10 years of Florida exposure</li> <li>✓ FGIA/AAMA 2605-certified</li> </ul> </li> <li><i>Corafon</i> Platinum Powder Warranty*:                             <ul style="list-style-type: none"> <li>✓ 20-year film integrity</li> <li>✓ 20-year chalk resistance (max 8 rating)</li> <li>✓ 20-year color change (&lt; 5 DE)</li> </ul> </li> </ul>	Best	★★★★	★★★★★	★★★	●	●



# Coil

Tailorable system for all environments, applications and surface finishes

STANDARDS	SOLVENTBORNE OR WATERBORNE	COATING TYPE	PRODUCT NAME	PRODUCT IDENTIFIER	CHEMISTRY	KEY PRODUCT FEATURES	POTENTIAL UNIQUE BENEFIT	DURABILITY	ALUMINUM	STEEL
	Solventborne	Primer	Duraprime ZAM 515	Chrome NIA, white or gray	Polyester	<ul style="list-style-type: none"> <li>Multiple substrate (including Zinc Aluminum Magnesium) and chemistry compatibility</li> <li>Good flexibility and good corrosion protection</li> <li>Multipurpose - universal primer</li> </ul>	<ul style="list-style-type: none"> <li>Compatible with all types of polyester, PVDF, polyurethane backbone</li> <li>Prevents cracking during forming and increases durability</li> <li>Reduces inventory and process complexity</li> </ul>	RC5	●	●
	Solventborne	Primer	PPG Universal	Chrome, Yellow	Polyurethane	<ul style="list-style-type: none"> <li>Multiple substrates and chemestries compatability</li> <li>High flexibility</li> <li>Excellent corrosion protection</li> </ul>	<ul style="list-style-type: none"> <li>Variable film build capable</li> <li>High build capable up to 0.7-0.8 mils</li> <li>0.35-0.45 mils demonstrated in HVAC market</li> <li>Standard film build 0.15-0.25 mils</li> </ul>	RC5	●	●
	Solventborne	Backcoat	Duraback PR	White, gray, transparent	Polyester-Epoxy	<ul style="list-style-type: none"> <li>Premium backcoat in particular for hot temperature and humidity storage resistance</li> <li>Very good coverage</li> <li>Excellent adhesion to PUR, PIR insulation foams and glues</li> <li>Multipurpose - Universal backcoat</li> <li>Can be applied direct to substrate</li> <li>Cured on conventional air convection, induction, NIR and IR ovens</li> </ul>	<ul style="list-style-type: none"> <li>Reduces coil collapsing issue</li> <li>Provides good hiding power</li> <li>Better humidity resistance</li> <li>Reduces inventory and process complexity</li> <li>User friendly and versatile</li> <li>Can fit various line conditions</li> </ul>	RC2	●	●
Duramar standard: FGIA/AAMA 2605	Solventborne	Topcoat	Duramar	IF	70% PVDF, Solid Colors	<ul style="list-style-type: none"> <li>Outstanding UV durability (color and chalk resistance)</li> <li>Superior corrosion resistance</li> <li>High flexibility with a tough and hard finish</li> <li>Intermix capabilities</li> <li>Non-flammable</li> </ul>	<ul style="list-style-type: none"> <li>Maintains quality and aesthetics for a long time</li> <li>Reduces coatings failure and warranty claims</li> <li>Reduces damages during handling and installation</li> <li>Fast delivery/color availability</li> </ul>	RUV4	●	●
	Solventborne	Topcoat	Durastar®	BP (Building Products)	Polyester	<ul style="list-style-type: none"> <li>Good flexibility</li> <li>Cured on conventional air convection, induction, NIR and IR ovens</li> <li>Very good scratch and mar resistance</li> <li>Higher volume solids and enhanced flow</li> <li>Intermix capabilities</li> </ul>	<ul style="list-style-type: none"> <li>Prevents cracking during forming</li> <li>Can fit various line conditions</li> <li>Reduces damage during handling and installation</li> <li>Reduces applied cost and increases line speed</li> <li>Fast delivery/color availability</li> </ul>	RUV3	●	●
Conforms to AAMA 2603*/2604**	Solventborne	Topcoat	Durastar VHP/ HP10000 HR	BP (Building Products)	Polyester	<ul style="list-style-type: none"> <li>Good flexibility</li> <li>Cured on conventional air convection, induction, NIR and IR ovens</li> <li>Excellent outdoor durability</li> <li>Higher volume solids and enhanced flow</li> <li>Very good scratch and mar resistance</li> <li>Intermix capabilities</li> </ul>	<ul style="list-style-type: none"> <li>Prevents cracking during forming</li> <li>Can fit various line conditions</li> <li>Maintains quality and aesthetics for a long time</li> <li>Reduces applied cost and increases line speed</li> <li>Reduces damage during handling and installation</li> <li>Fast delivery/color availability</li> </ul>	RUV4	●	●
Conforms to AAMA 2603*/2604***	Solventborne	Topcoat	Durastar Writex	Wrinkle	Polyester	<ul style="list-style-type: none"> <li>Wrinkle finish with sparkle effect different textures fine and coarse available</li> <li>Very good flexibility with a tough and hard finish</li> <li>Higher volume solids with textured effect</li> <li>Intermix capabilities</li> </ul>	<ul style="list-style-type: none"> <li>Enhances texture of surrounding materials</li> <li>Reduces damage during handling and installation</li> <li>Increases hiding of substrate imperfections</li> <li>Fast delivery/color availability</li> </ul>	RUV4	●	●
Conforms to AAMA 2603*/2604***	Solventborne	Topcoat	Durastar Writex PU	Wrinkle	Polyurethane	<ul style="list-style-type: none"> <li>Wrinkle finish with sparkle effect different textures fine and coarse available</li> <li>High flexibility with a tough and hard finish</li> <li>Higher volume solids</li> <li>Intermix capabilities</li> </ul>	<ul style="list-style-type: none"> <li>Enhances texture of surrounding materials</li> <li>Reduces damage during handling and installation</li> <li>Increases hiding of substrate imperfections</li> <li>Fast delivery/color availability</li> </ul>	RUV4	●	●

\*Various colors can confirm to AAMA 2603 over aluminum and steel substrates

\*\*Specific colors can conform to AAMA 2604 applied as part of a chromate-free system on aluminum substrates

\*\*\*Various colours can conform to AAMA 2604 when applied using chromated primer layer on aluminum and steel substrates

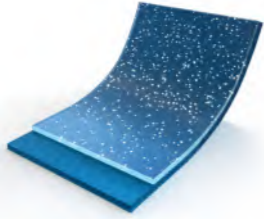


# Powder - layering

## Standard aluminum substrate internal or external use\*

### One layer

- P2 polyester
- Corafon Platinum



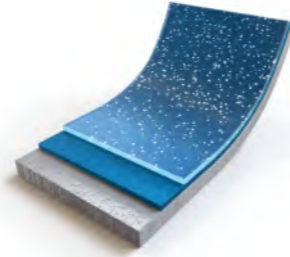
## Harsh environment aluminum substrate\*

### One layer

- Corafon Platinum

### Two Layers

- Primeron EDGE / P2 polyester



## Steel substrate interior applications

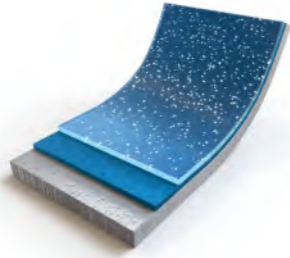
### Either one layer

(with appropriate surface preparation)

- P2 polyester
- Corafon Platinum

### or Two layers

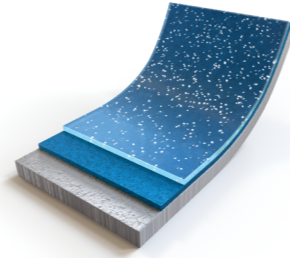
- Primeron Edge / P2 polyester
- Primeron Edge / Corafon Platinum



## Steel substrate exterior applications

### Two layers

- Primeron Pro / P2 polyester
- Primeron HTE / Corafon Platinum



\*Pretreatment used

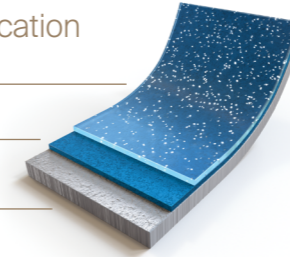
# Coil and Extrusion - layering

## Coil Standard 2604\*\* High Corrosion Application

Durastar VHP/  
HP10000 HR

PPG Universal Chromated/  
Duraprime 515

Duraback PR



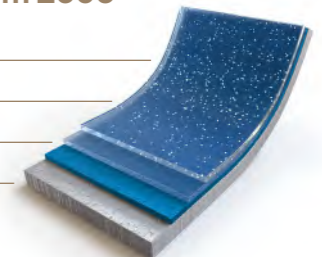
## Coil Optimum System 2605\*\*

Clear Duranar

Duranar

Duraprime 515

Duraback PR

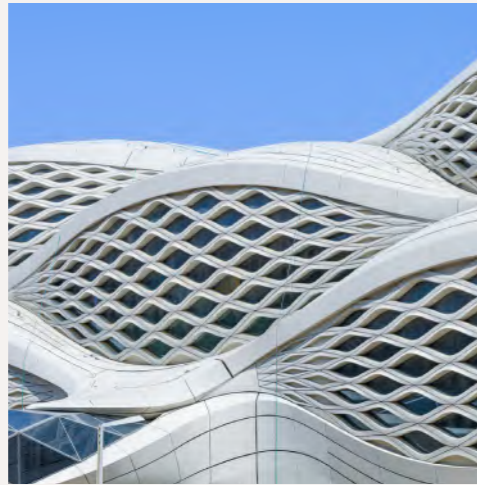


\*\*Applicable to both steel and aluminum substrate

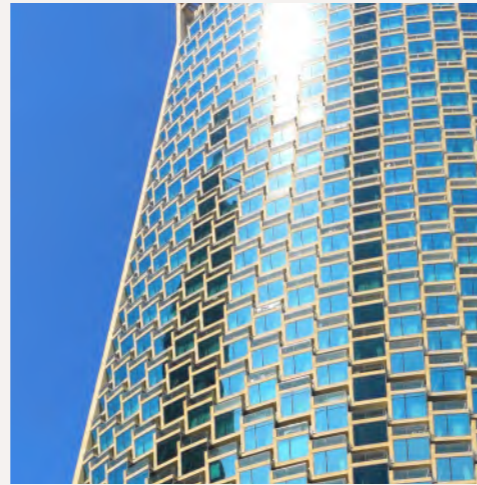
## Duranar® extrusion



Storefronts



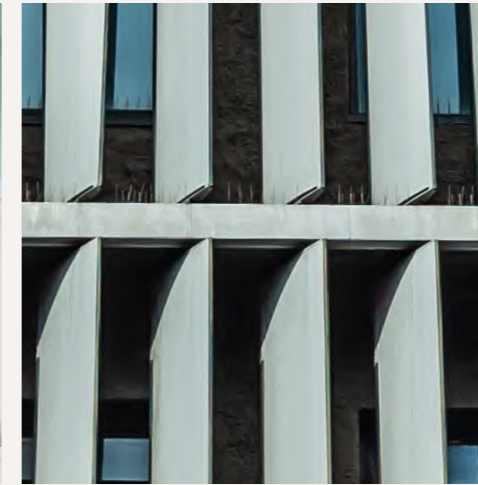
Monumental Applications



Curtain and Window Walls



Window and Door Systems



Louvres

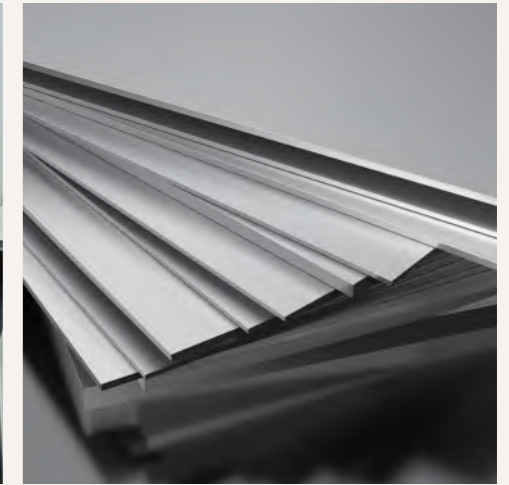


Plate Aluminum

## Why Duranar?

- Ultimate durability in harsh environments
- Nearly 60 years of proven performance
- Excellent resistance to chalk and color fade, preserving building aesthetics
- Non-flammable
- Multitude of design options for architects and designers
- Exceptional color stability and gloss retention
- Meets or exceeds FGIA/AAMA performance requirements
- One of the world's most specified metal coatings

## Why Corafon Platinum?

- Ultradurable quality
- For premium exterior use
- Available in a wide range of colors, glosses, micas and bonded metallics
- High transfer efficiency: > 20% improvement over standard FEVE leading to significantly less waste
- Extended gloss range from 5-85. (vs. 25-70 for FEVE product)
- Anodized appearance is achievable with Corafon Platinum due to low gloss capability
- Non-flammable

# Standards and Specifications

## PPG coatings for extrusion applications

Specifications and standards are essential in architecture, especially for coatings used in extrusion applications. They ensure the coatings meet required quality, durability and performance criteria, providing clear guidelines for application and compliance with industry regulations. This helps achieve consistent, long-lasting finishes that protect and enhance extruded materials, reducing errors and supporting cost-effective, reliable project outcomes. PPG has protection solutions that meet performance requirements for interior and exterior applications.



AAMA (American Architectural Manufacturers Association) is now part of FGIA, establishing standards for performance and quality benchmarks in architectural products, particularly in the fenestration industry, ensuring durability and reliability.



A quality label organization committed to maintaining a quality of powder coating on aluminum and its alloys for architectural applications.

## Durability: Florida Testing to assess the durability

- Florida climate combines strong UV attacks, high temperatures, high humidity.
- Florida testing consists in observing color variation gloss change in time.
- Florida natural exposure is a universal testing method.

Origin	Name	Type	Florida performance			
			1 year	3 years	5 years	10 years
Europe	QUALICOAT	Quality label Coaters and suppliers are approved	Class 1	Class 2	-	Class 3
USA	FGIA/AAMA	Voluntary standard	2603	-	2604	2605

## Liquid Coatings including Coil

Standard	Solventborne or Waterborne	Coating Type	Product Name	Product Identifier	Chemistry
FGIA/AAMA 2605-certified	Solventborne	Topcoat (PVDF liquid)	Duranar®	IF	70% PVDF, solid colors
FGIA/AAMA 2605-certified	Solventborne	Topcoat (Coil)	Duranar	IF Sunstorm®	70% PVDF
FGIA/AAMA 2605-certified	Solventborne	Topcoat (Coil)	Duranar	IF XL/MXL	70% PVDF with PVDF clearcoat or mica-tinted PVDF clearcoat

## Powder Coatings

Standard	Coating Type	Product Name	Product Identifier	Chemistry
Qualicoat Class 2, FGIA/AAMA 2604	Topcoats, Exterior	Envirocron	PCS - P2 series	Polyester architectural super durable matte, fine textured and gloss
FGIA/AAMA 2605	Topcoat	Corafalon Platinum	PCN Series	FEVE fluoropolymer

# Color: Unica Collection

PPG is more than a global leader in protective solutions. Our designers, stylists and chemists know that durability is only part of the equation. Color drives success. At PPG, we know what matters most to our partners: consistent color batch after batch, custom color development, precision color matching and industry-leading forecasting that keeps our partners ahead of the curve.

Color has the power to transform the mundane to the magnificent, infusing projects with unparalleled beauty, depth and brilliance. PPG is proud to unveil our newest architectural powder color collection that showcases eight complementary palettes, inspired by the splendor of the natural world.

The Unica Collection is a family of polyester resin-based thermo-setting powder coatings. Meeting QUALICOAT® Class 1 and Class 2 specifications, this collection offers excellent mechanical characteristics, resistance to corrosion and exterior exposure, as well as outstanding aesthetic appeal, making it ideal for a broad range of architectural metal applications.



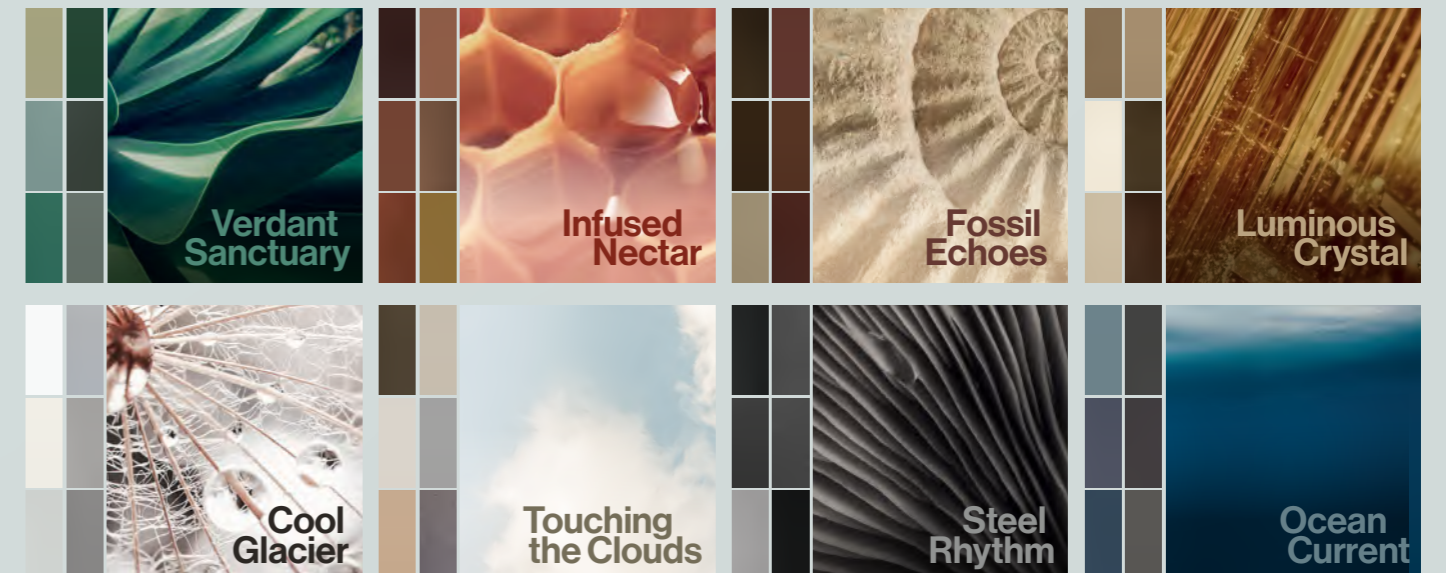
Scan for more information and the complete catalog.



In addition to our full range of RAL colors, the Unica Collection provides a unique color palette for architects and designers.

For custom color matches, please contact: your local PPG representative.

Click on the separate images to learn more about each palette.



# Industrial Coatings

To learn more about our specific areas of expertise, please scan the appropriate QR code below.

## Industrial Coatings



## Industrial Powder Coatings



## LinkedIn



## YouTube



To learn more, e-mail us  
**ICMarComm@ppg.com**



## PPG: We protect and beautify the world®



### A trusted global coatings leader

Operations in 70 countries



### Renowned color expertise

Trend-setting palettes for home, auto and industry paired with precision color matching



### Commitment to sustainability

Over 41% of annual sales from sustainably advantaged products and processes



### Dedication to innovation

Over R&D® 100 Awards received



## Industrial Coatings from PPG

- Offers world-class technical services and training
- Partners with customers to meet coatings-related environmental mandates
- Assists in setting up new equipment and streamlining finishing processes
- Solves production issues with troubleshooting expertise
- Accelerates integration of new formulations and colors with Secure Launch Excellence™

To learn more about PPG coatings, please visit us online at [ppg.com/industrialcoatings](http://ppg.com/industrialcoatings), or contact one of the international sales offices listed below.

## PPG Regional Headquarters

● PPG Global Headquarters / PPG North America  
Pittsburgh, PA USA  
ic-na@ppg.com

● PPG Europe, Middle East and Africa  
Rolle, Switzerland  
ic-emea@ppg.com

● PPG China HQ  
Shanghai, China  
ic-cn@ppg.com

● PPG Dubai  
Dubai, United Arab Emirates  
dl-dubaiall@ppg.com

The technical data presented in this document is based upon information believed by PPG to be currently accurate. However, no guarantees of accuracy, comprehensiveness or performance are given or implied. Continuous improvements in coatings technology may cause future technical data to vary from what is presented in this document. Contact your PPG representative for the most up-to-date information.

The PPG Logo, Duranar, Envirocron, Corafon, Durastar and Secure Launch Excellence and We protect and beautify the world are registered marks of PPG Industries Ohio, Inc. The IN Logo is a registered trademark of LinkedIn Corporation. © 2025 PPG Industries, Inc. All Rights Reserved. R&D is a registered trademark of Advance Business Media LLC.

PPG Industrial Coatings One • PPG Place, Pittsburgh, PA 15272 • IC173 • [ppg.com/industrialcoatings](http://ppg.com/industrialcoatings)

