



## PPG STREAM™ Clear Paint Film

# Product Removal Process

PPG STREAM clear paint films utilize pressure-sensitive adhesives to offer easy application, superior bond strength and simple removal for repair and refit. As a decorative paint system, a consistent regimen of upkeep and maintenance, such as cleaning, polishing and waxing, will help sustain the showroom-quality finish of PPG STREAM paint films.

## Overview

It may be necessary, at times, to strip PPG STREAM clear paint film for repair, refit or replacement of underlying body panels. The PPG STREAM film-based coating system allows for rapid removal and refit without the need for environmentally hazardous resprays. The system can be removed and replaced in minutes.

## Recommended Tools

- Steamer
- Plastic squeegee
- Protective gloves
- Micro-fiber towels
- Adhesive remover



**PPG STREAM Clear Paint Film**

[paintapplieddifferently.com/customization](http://paintapplieddifferently.com/customization)

### Step 1

## Start an edge and fold the film back onto itself

To begin stripping the film from the vehicle, using your fingers or a plastic squeegee, peel back an edge of the film. After an adequate amount of the film has been lifted, carefully stretch the material parallel to the surface of the panel to stretch-shear the material off of the panel. Once a small section of the film is free from the panel, fold the material back on itself. This will give the technician a thicker "handle" to pull the material.

Continue to remove the film via the stretch-shear process. Employing this best practice will help prevent tearing during removal.



## Step 2

### Steam surface of film

Steaming the surface of the vehicle will aid in the removal process. However, caution must be used. A steamer can generate an excessive amount of heat. This can damage aluminum, fiberglass and plastic panels/bumpers if the steamer wand is held in one place for a long period of time. Keep the handheld wand moving and do not exceed 130° F (55° C).

Heat an area 2 to 4 square feet (less than 1 square meter) at a time. Keep the steamer 3 to 8 inches (5 to 15 cm) from the surface of the car and do not heat a section for more than 30 seconds. Avoid over-wetting the surface as well, as this can cause the film to become difficult to grip.



## Step 3

### Pull material free from substrate

When removing film from the substrate, grip the material by the folded-over "handle" from the previous step. Then, the technician should pull the film as nearly to parallel to the substrate as possible. Using a steamer, flash heat the area where the adhesive meets the substrate to help deactivate the bond. As the adhesive breaks free, pull the film away from the surface of the vehicle. Continue this process until the film has been completely stripped free of the panel. Repeat this process for all body panels until the film is completely stripped from the vehicle.

## Step 4

### Broad adhesive removal

Once the film has been completely removed, the adhesive or glue must be removed. Use adhesive remover with a clean, dry micro-fiber towel to remove glue residue.

While removing residue, the micro-fiber towel can tend to "load-up" with the glue residue. If this occurs, the micro-fiber towel will become somewhat "sticky" to the touch. Simply reach for a new, clean micro-fiber towel and continue.



Film glue/adhesive residue



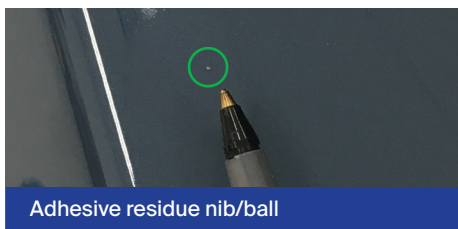
## Step 5

### Final inspection and cleanup

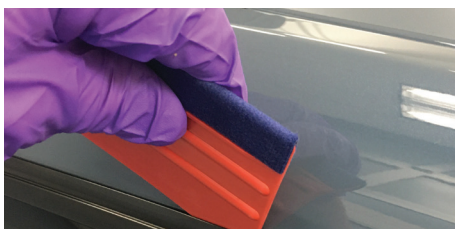
After the panel is dry, it may appear to be clean. However, tiny glue nibs/balls may still exist. These tiny bits of glue are difficult to see. They are easily detected by touch. Brush your hand lightly over the entire panel to find and remove the residue. Use a cleaner with a clean, dry micro-fiber towel to accomplish this task.

In addition, be sure to examine and inspect all areas where the panels and/or components meet (e.g., roof lines against rubber seals, bumpers meeting panels, grille inserts, door handles-mirrors). In close or tight areas, use a rubber squeegee to assist in the removal of the leftover residue.

 **It is CRITICAL that ALL residue is removed for the success of any film re-application.**  
Inspect areas where panels and/or components meet and remove residue with a squeegee



Adhesive residue nib/ball



This document contains general information only and should not be construed as creating any warranties, express or implied.

Please contact a PPG representative for additional information.

PPG Advanced Surface Technologies • 9360 Innovation Campus Way, Suite 100, New Albany, OH 43054

The PPG Logo and We protect and beautify the world are registered trademarks of PPG Industries Ohio, Inc. © 2025 PPG Industries, Inc. All Rights Reserved.



We protect and beautify the world®