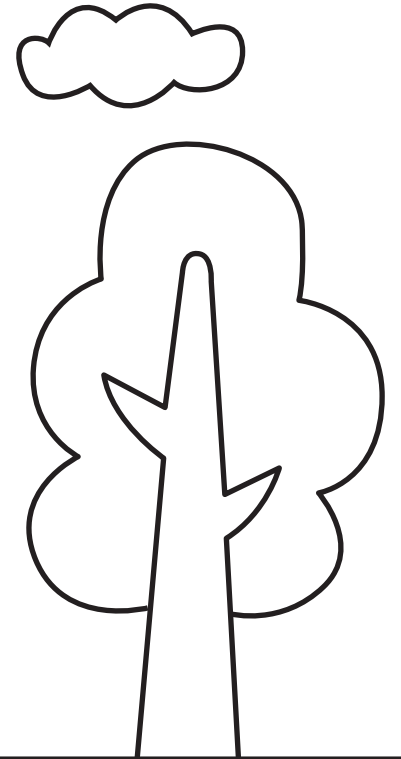
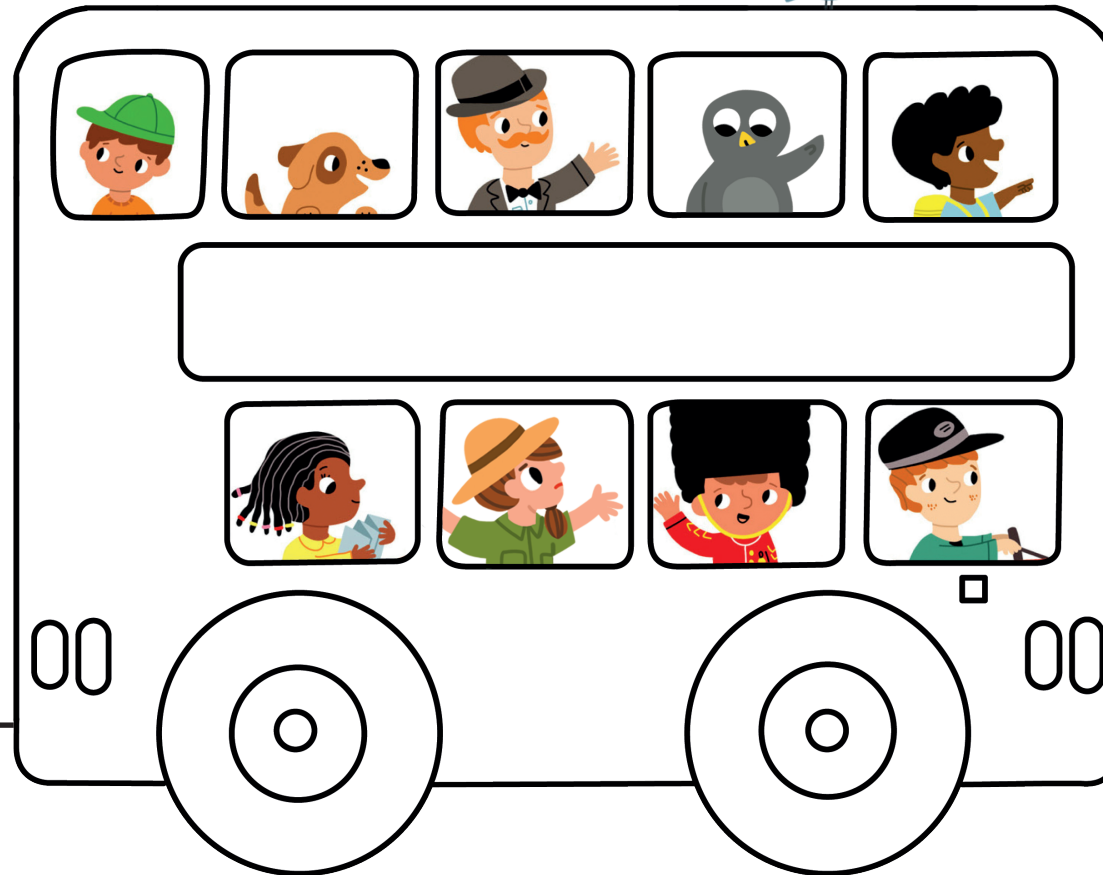
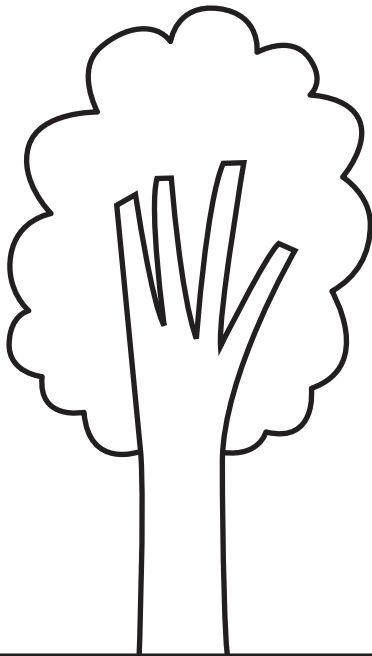


# Here comes the London Bus!

Colour in the picture. Can you spot the bus driver?

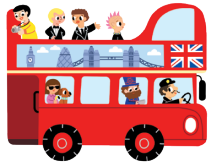


Adapted from **My First London Search and Find Sticker Book**

Text and design © Macmillan Publishers International Ltd 2020  
Illustrations © Marion Billet 2020

# Spot and say

Can you find these pictures in the busy scene?



a bus



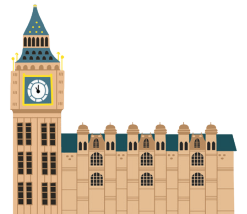
an ice-cream van



the London Eye



a black cab



Big Ben



The Queen



Adapted from **My First London Search and Find Sticker Book**

Text and design © Macmillan Publishers International Ltd 2020  
Illustrations © Marion Billet 2020

# Race to Tower Bridge

Beep-beep! The bus is racing around the city.  
Help it through the streets before Tower Bridge goes up.



**START**

Can you stop at  
three bus stops  
on the way?



**FINISH**



Adapted from **My First London  
Search and Find Sticker Book**

Text and design © Macmillan Publishers International Ltd 2020  
Illustrations © Marion Billet 2020

# Spot the odd one out

The Queen's guard protects Buckingham Palace.  
Find and circle the odd one out in each row.



Adapted from **My First London**  
**Search and Find Sticker Book**

Text and design © Macmillan Publishers International Ltd 2020  
Illustrations © Marion Billet 2020