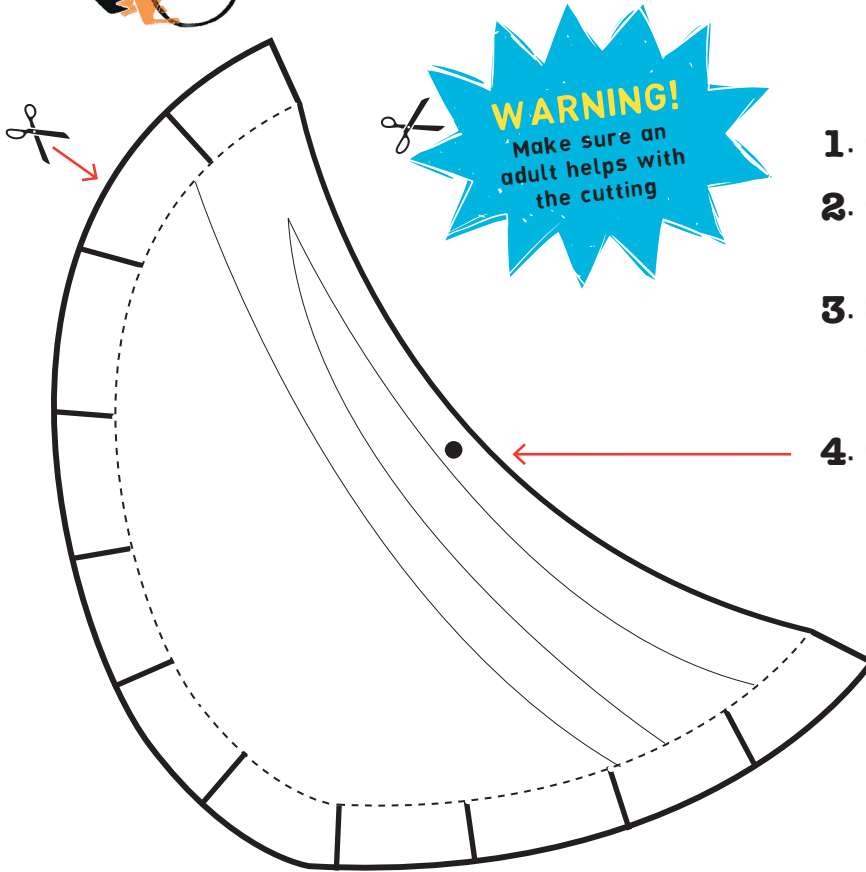


# Join the Steves!

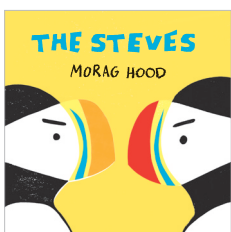
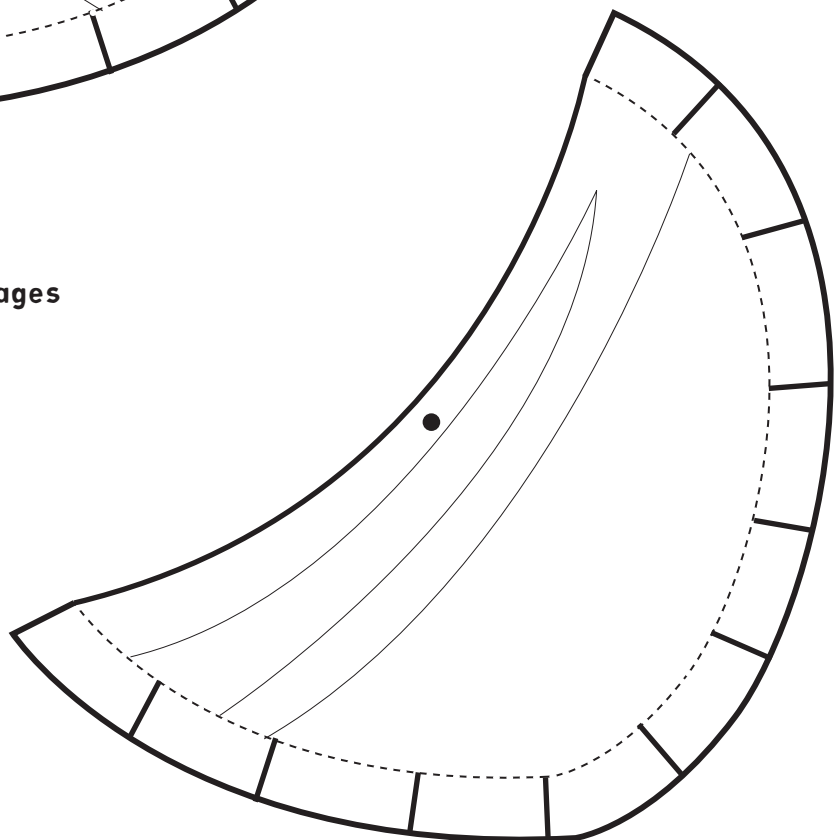


Dress up like Steve by creating your very own beak



1. Colour in your beak
2. Cut out the beak using the thick solid lines as a guide
3. Fold along the dotted lines, creating tabs to use to stick your beak together
4. Create a hole in the side of the beak

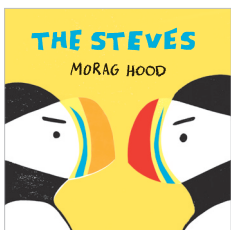
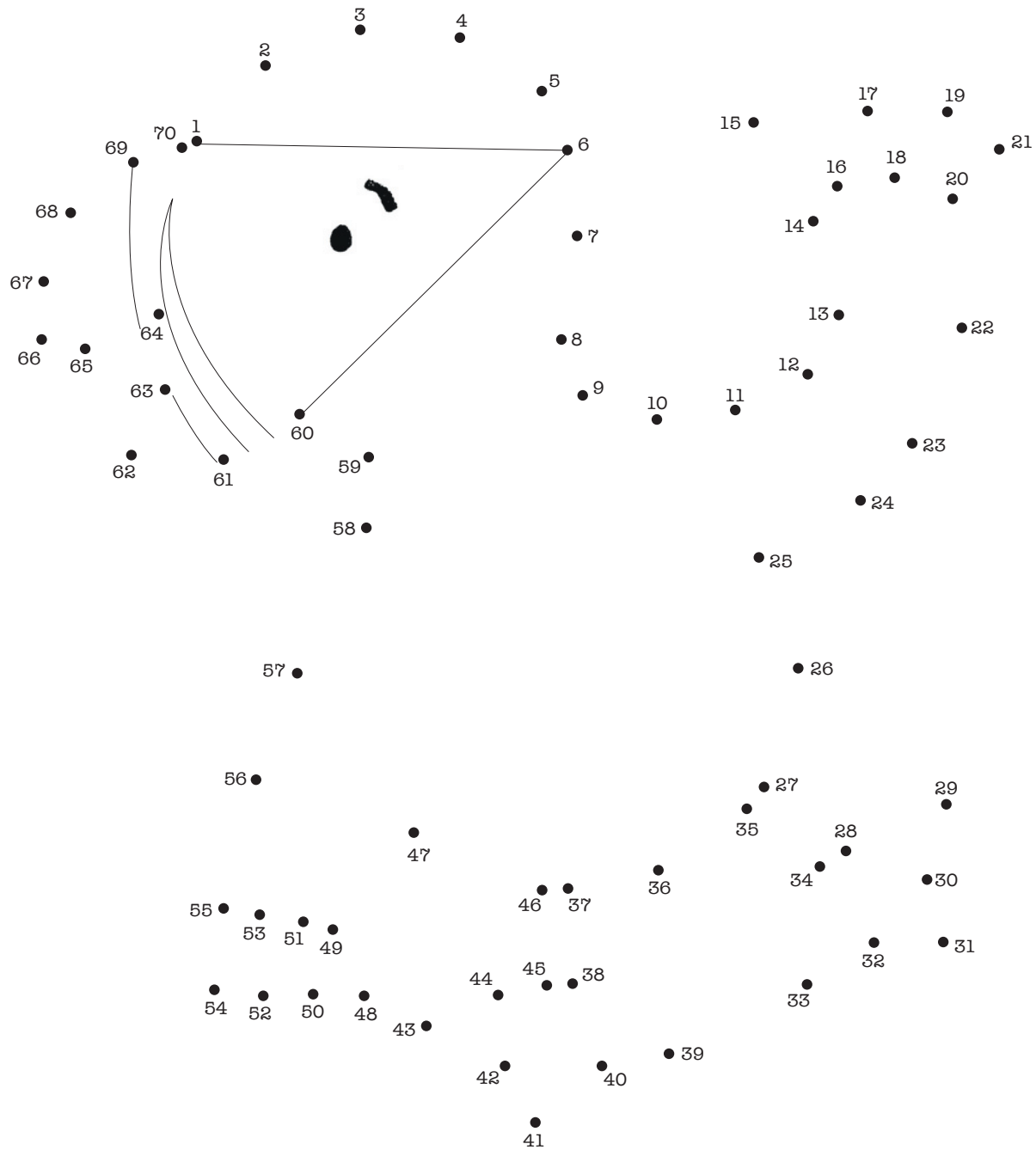
5. Place the backs of the beak images together and match up the tabs
6. Glue the tabs together
7. Tie a string of ribbon through the holes
8. Put your beak on and be one of the Steves!





# The Steves Dot-to-Dot

Join the dots below  
to reveal a Steve!





# The Steves Puffin Facts



Discover some fun puffin facts

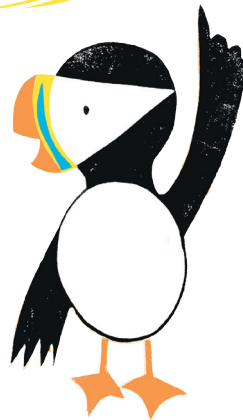


Baby puffins are called **pufflings**

A puffin weighs the same as a can of **cola**



Puffins live in a **hole** in the ground, called a **burrow**



Puffin beaks change **colour** throughout the year



When puffins are angry they **stomp** their feet

