

Make your own Petula the Pug Soft Toy



Now you can make your very own hypnotic Petula the Pug soft toy by following this pattern. Some bits are quite tricky so ask an adult to help you. You can do all the sewing by hand so don't need to use a sewing machine, but if you do use a sewing machine your toy will be stronger and last longer. You will be able to buy all of the equipment from any good haberdashery store.

You will need:

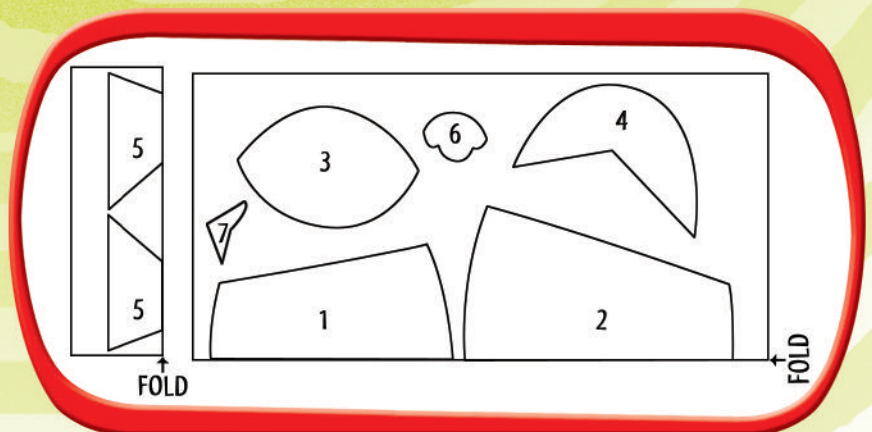
- ☉ The pattern sheet photocopied on to A3 – see 1 below
- ☉ 1m² blue felt
- ☉ 10cm² white felt
- ☉ Pins
- ☉ Fabric glue
- ☉ Fabric scissors
- ☉ Needle and blue thread
- ☉ 1 thick blue pipe cleaner
- ☉ 50cm length of red ribbon
- ☉ Gold button
- ☉ Black fabric painting pen
- ☉ 1 bag of toy stuffing
- ☉ 1 toy nose

Key to stitches:



Instructions:

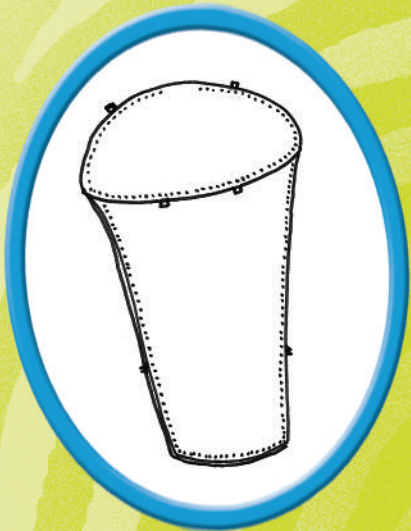
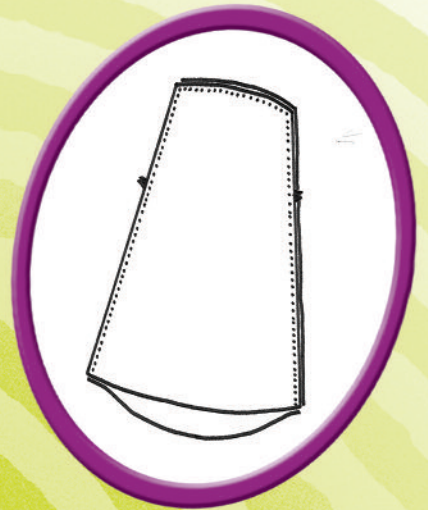
1. Photocopy both pattern sheets making them twice as big so they are on A3 paper.
2. Carefully cut out each pattern piece, making sure you cut around all the triangles.
3. Cut a strip of felt 20cm by 50cm, and fold in half (lengthwise). Lay both the 5 pieces on as shown here, making sure the blue lines are on the fold. Fold the remaining blue felt in half and lay the pattern pieces on the material as shown here, making sure you put the blue line of pieces 1 and 2 on the fold.



4. Pin all the paper pattern pieces on to the felt keeping the felt folded and pinning the two halves together.

5. With the help of an adult, carefully cut out each bit, making sure you also cut around all the little triangles on pieces 1, 2, 3 and 4 as they will act as markers to help you put the bits of material together.

6. Unpin the paper pattern from pieces 1 and 2 and unfold both bits of material. Place piece 1 on top of piece 2 and pin the edges of both pieces together matching the triangles marked 'A' together. Carefully stitch both sides and the top, either using a sewing machine or a small, neat running stitch and leaving a hem of about 5mm. Leave the bottom unstitched.

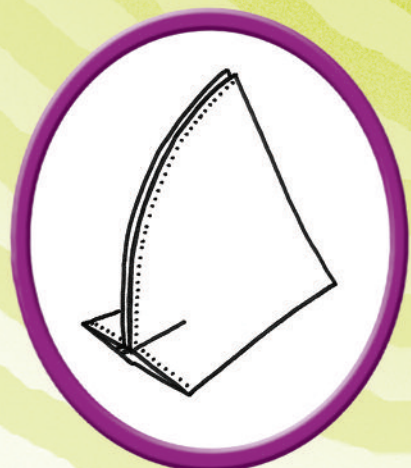


7. Unpin the paper pattern from piece 3 and attach one piece to the bottom of pieces 1 and 2, matching the triangles marked 'B' together on the front, and the triangles marked 'C' together on the back. Pin it into place and then carefully sew piece 3 to pieces 1 and 2, leaving a 10cm gap at the back (marked by the red line on the pattern).

8. Carefully turn the whole shape inside out so your stitches are on the inside – this will look much neater.

9. Now you can stuff the body using toy stuffing. Take a handful of stuffing and push it through the 10cm gap you left in the base. Push the stuffing right into the corners and mould the shape of Petula's body.

10. Take the blue pipe cleaner and curl the end so it looks like Petula's curly tail. Stick the uncurled end into the centre of the 10cm gap so only the curly end is sticking out of Petula's body. Pin it into place and sew up the gap using a small, neat oversewing stitch.



11. Now let's give Petula some legs! Unpin the paper pattern from piece 4 so you have two felt pie-like shapes – these will become Petula's back legs. Fold each piece in half so the two triangles marked 'D' touch and the two points touch. Stitch along the curved edge from the point until the triangles. Then pinch the remaining felt between the two triangles together and sew.



12. Turn both back legs inside out so the stitching is on the inside. Stuff both back legs and then pin them into position on the side seams of the body. Sew them in place using a small, neat oversewing stitch.



13. Unpin the paper pattern from both 5 pieces, keeping them folded. Sew along the side and bottom of each piece. Turn them both inside out so the stitches are on the inside, then stuff them both, making sure you push the stuffing right to the ends. Pin both front legs into position on the body, then sew them into place using a small, neat oversewing stitch.

14. Now you are ready to make Petula's face. First, lay some newspaper to protect your work surface. Cut two white circles (piece 8) out of white felt for Petula's eyes. Take your black fabric pen and draw a swirl pattern on each circle. When the fabric pen has dried, stick both eyes in position on the body using fabric glue.



15. Colour in the ear shapes (piece 7) with the black fabric pen and stick them in place.

16. Draw a mouth on the muzzle shape (piece 6) and stick the toy nose where the black dot is on the pattern piece.



17. Pin the muzzle into position on Petula's face and then sew in place using an oversewing stitch. Leave a 5cm space and push a little stuffing into the muzzle so it sticks out from Petula's face a little, then sew up the gap. Pugs have very wrinkly faces. Draw Petula's wrinkles with your black fabric pen.



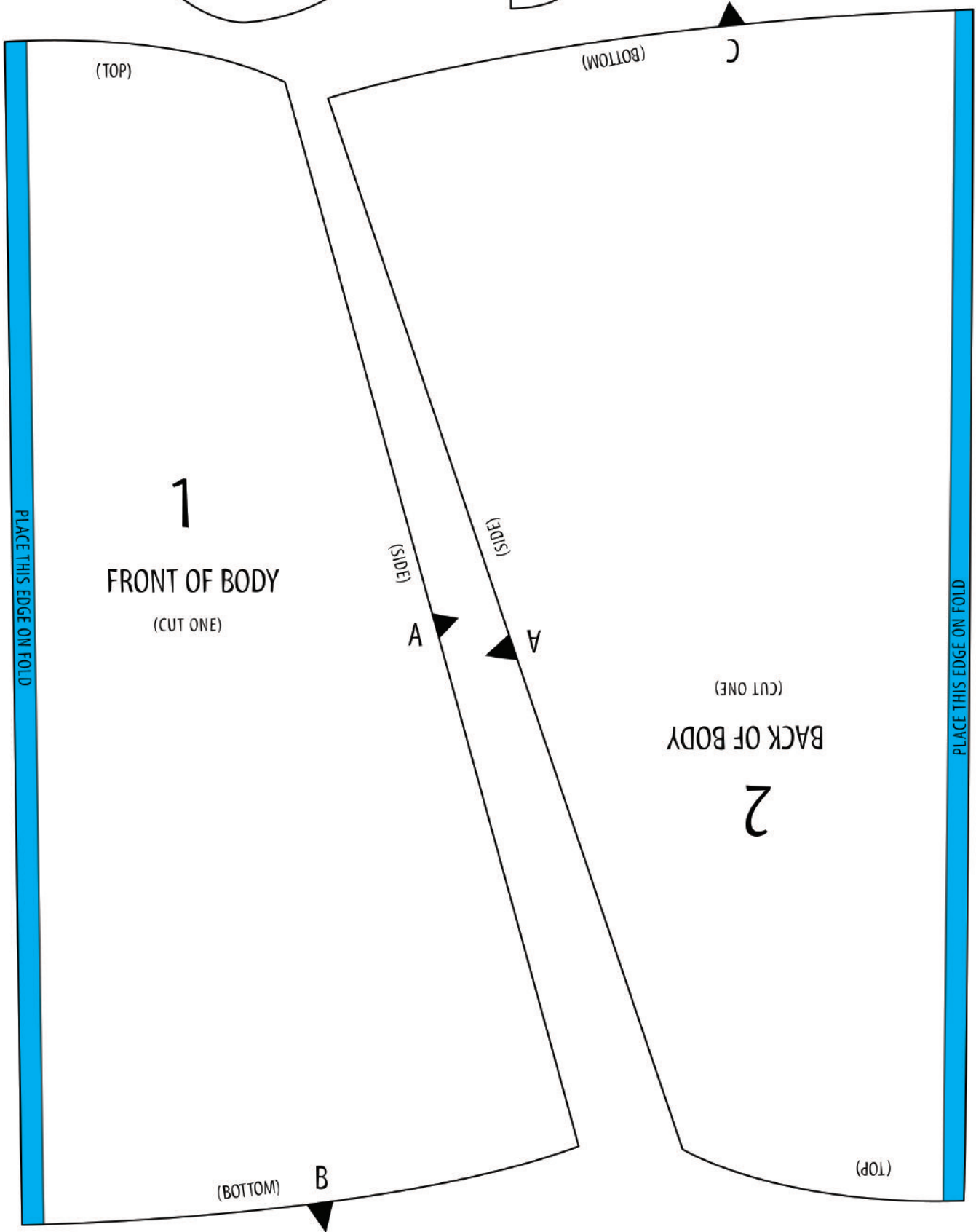
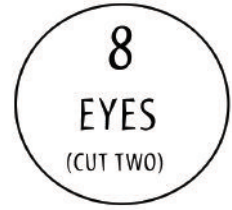
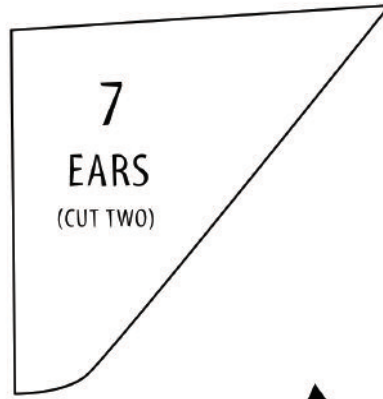
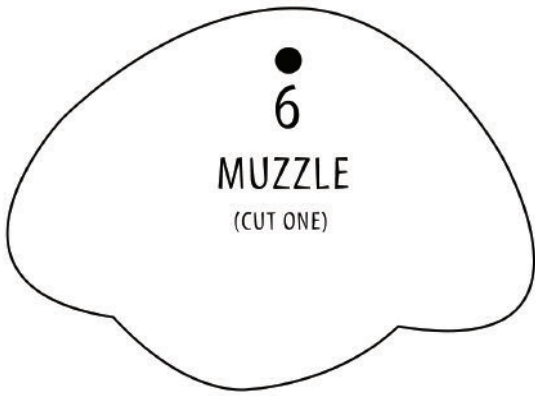
18. Finally, cut the red ribbon down to size so it goes around Petula's neck – not too tightly though! Sew a gold button right in the middle.



Watch a video of Georgia Byng making her own Petula the Pug toy on

www.MeetMollyMoon.co.uk

ENLARGE PATTERN SHEET TO A3 SIZE



ENLARGE PATTERN SHEET TO A3 SIZE

