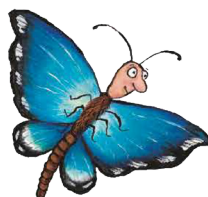
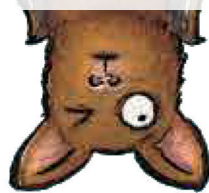


Can you sign some of the words  
in the Monkey Puzzle story?



### Animal

Two middle fingers  
close onto thumbs



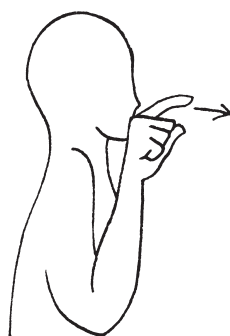
### Bat

Flutter fingers

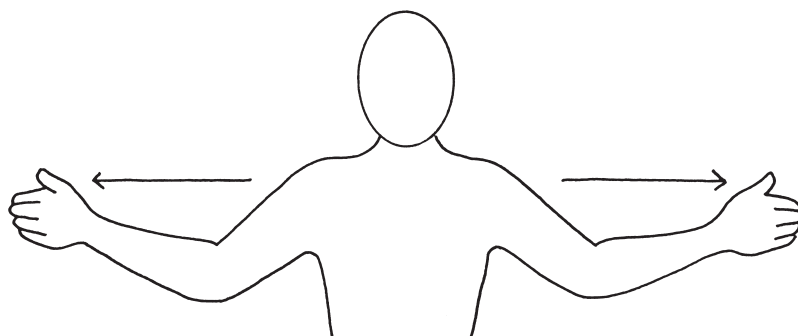


### Butterfly

Flutter hands and move  
them slightly upwards  
and forwards



### Beak



### Big

Begin sign with hands closer together  
like 'Small' then draw apart

THE GREATEST STORIES IN TOWN  
BY

JULIA DONALDSON AXEL SCHEFFLER



Find out more at  
[www.gruffalo.com/greateststories](http://www.gruffalo.com/greateststories)

