

WORD SEARCH

Can you crack the mystery and find all of the words?

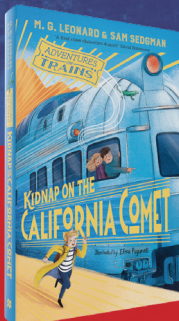
T	R	A	I	N	S	D	Y	T	W	A	C	H	Y	D
A	U	L	L	A	B	M	S	S	F	Y	T	P	A	T
E	G	S	U	S	P	E	C	T	G	B	J	A	H	C
N	S	C	G	Y	I	C	O	V	S	C	K	S	J	K
G	P	D	G	B	N	K	M	D	X	V	A	S	A	T
I	E	E	A	E	X	B	P	Y	E	B	R	E	S	L
N	I	T	G	A	Z	J	A	F	S	F	T	N	F	A
E	G	E	E	R	C	G	R	G	H	T	M	G	K	B
I	F	C	S	U	H	T	T	J	S	J	E	E	R	Y
K	K	T	K	D	I	A	M	O	N	D	N	R	O	L
X	D	I	A	M	D	U	E	N	G	A	T	S	Y	N
O	E	V	Y	G	D	I	N	P	S	D	V	R	A	P
V	Q	E	Q	D	E	Q	T	H	I	E	F	R	L	R
S	T	R	X	A	N	F	D	G	H	T	I	L	T	H
V	U	C	R	N	S	H	N	W	X	U	S	S	Y	D

Trains
Thief
Mystery

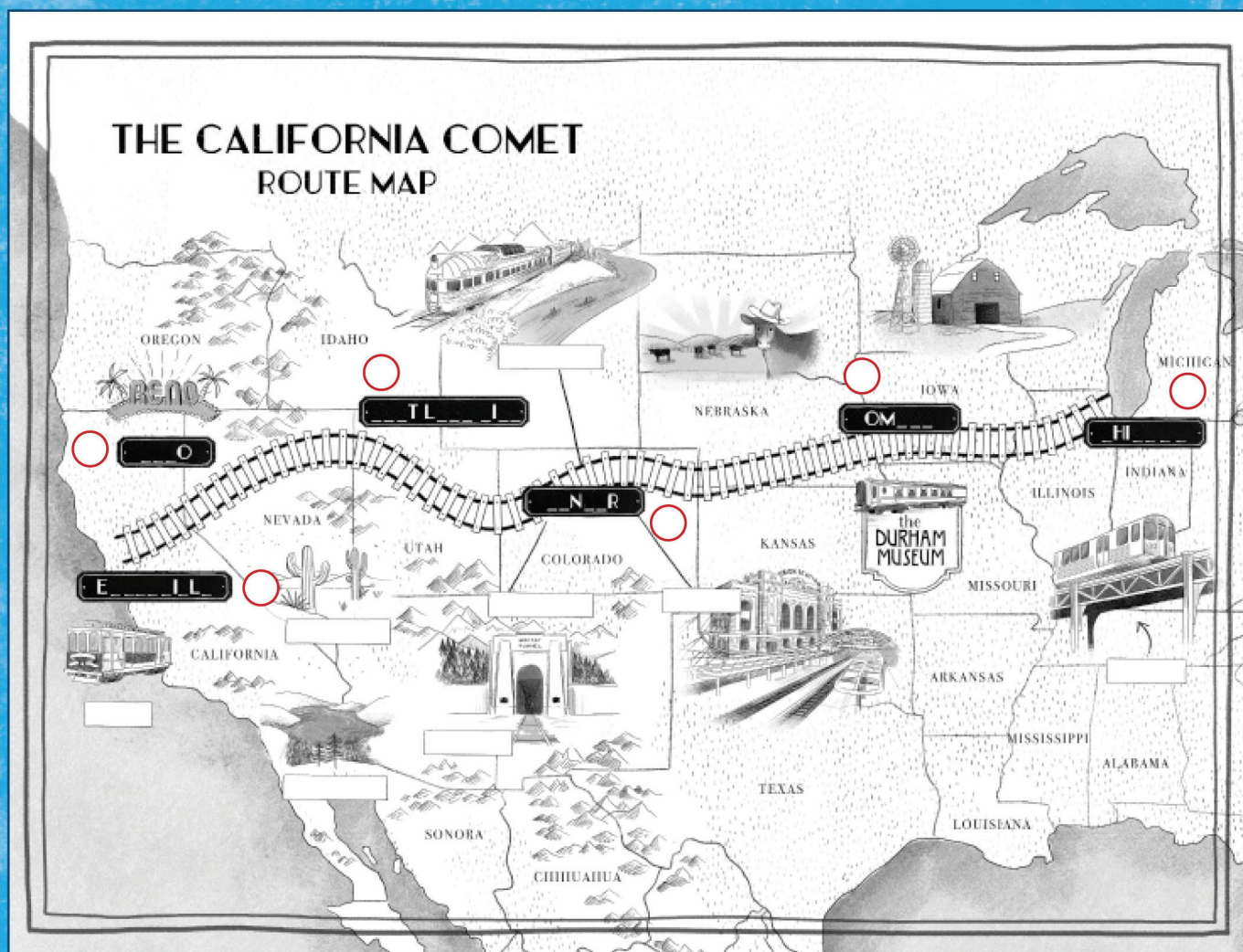
Detective
Royalty
Suspect

Compartment
Engine
Passengers

Luggage
Diamond
Hidden



Uh-oh you have boarded the train but vital information is missing from the map! Can you work out which word goes where before the train departs and help the driver find his way?

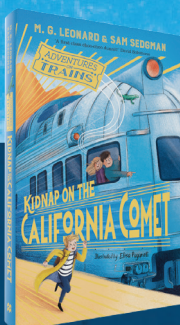


Write the number of the word in the red circle beside the station names.

- 1 CHICAGO
- 2 DENVER
- 3 OMAHA
- 4 SALT LAKE CITY
- 5 EMERYVILLE
- 6 RENO

Write the missing place name or location in the corresponding box above.

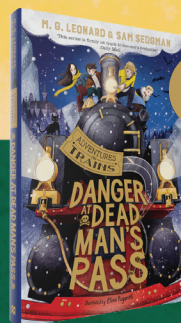
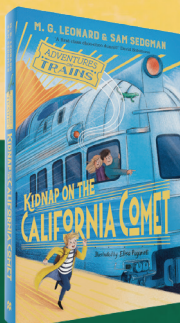
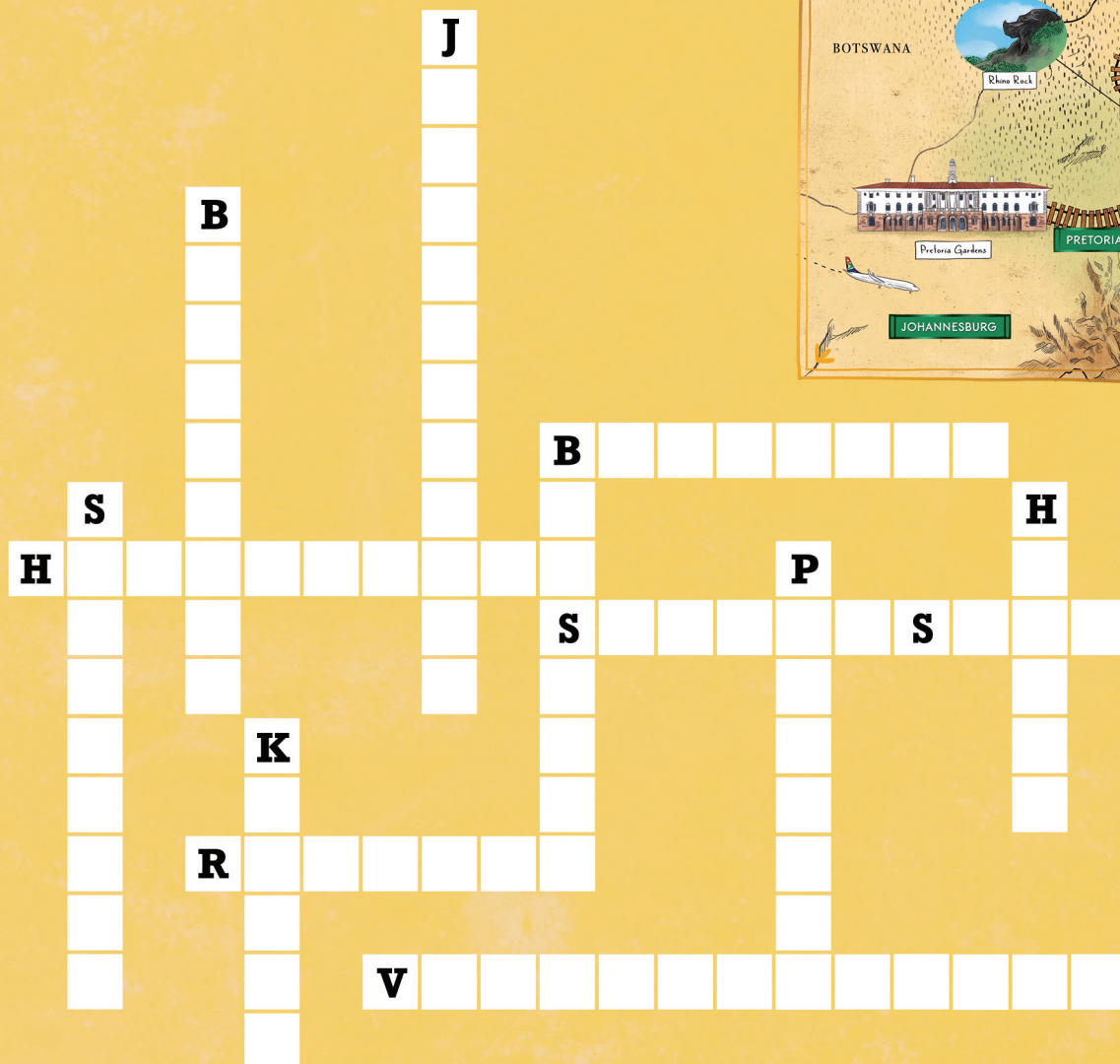
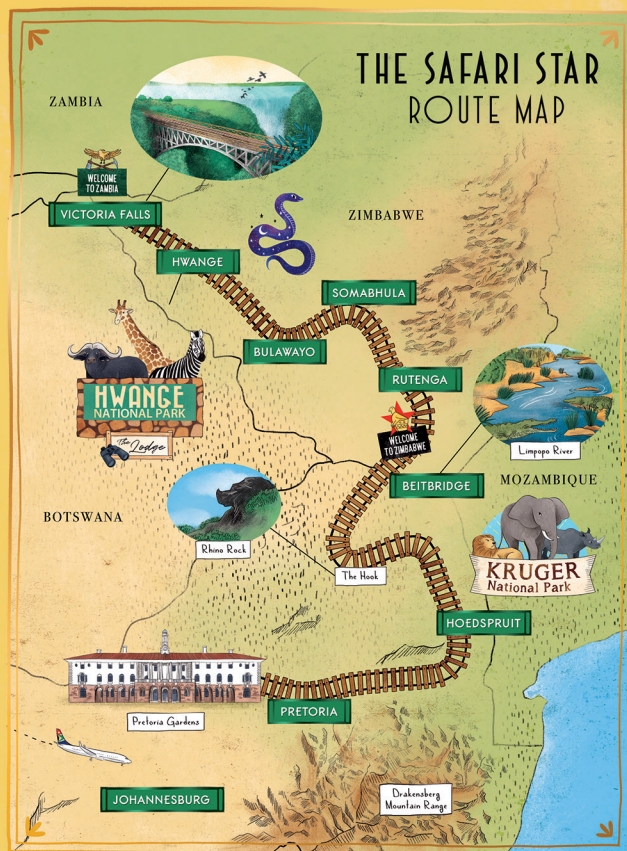
- | | |
|---------------|-----------------|
| THE L TRAM | MOFFAT TUNNEL |
| CABLE CAR | COLORADO RIVER |
| DONNER LAKE | NEVADA DESERT |
| UNION STATION | ROCKY MOUNTAINS |



CROSSWORD

Harrison is on board The Safari Star travelling across Africa.

With a mystery to solve, can you help him by finding the places mentioned on the map and fit them into the grid below – we've given you the first letter as a clue.



NEW

DANGER AT DEAD MAN'S PASS

M. G. LEONARD & SAM SEDGMAN

Illustrated by Elisa Paganelli

ALL ABOARD



CRACK THE CODE

Use the secret message decoder to uncover the answers to the following questions! You'll find out more about the journey to the German mountains taken by Hal and Uncle Nat in *Danger at Dead Man's Pass*.

A	B	C	D	E	F	G	H	I	J	K	L	M	N	O	P	Q	R	S	T	U	V	W	X	Y	Z
U	P	B	R	O	C	K	E	N	M	O ₂	U ₂	N ₂	T	A	I	N ₃	W	I ₂	T ₂	C ₂	H	E ₂	S	F	L

For example: E U U₂ spells Hal

Q1. True or False? The Eurostar is the longest tunnel underneath the sea in he world?

A1: T₂W C₂O N T₂N I₂ 3O N₂NU₂O I₂ U₂ATK

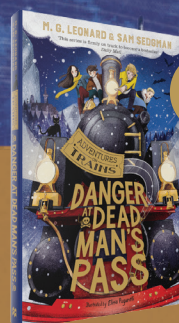
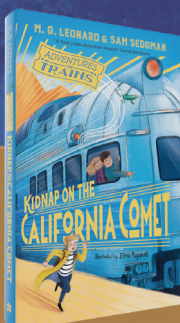
Q2. One of Uncle Nat's favourite German words is wanderlust, what does it mean?

A2: U R O I₂ N O T₂ A T₂ W U H O U₂

Q3. Which city visited by Hal and Uncle Nat on their journey contains the river Spree?

A3: P O W U₂ N T

Answers:
A1. True. It is 30 miles long
A2. A desire to travel
A3. Berlin



NEW