

In₂HOCKEY
TAKE IT TO THE NEXT LEVEL



National Schools & Clubs In2Hockey Finals

2025/26

Friday 15th & Saturday 16th May 2026

OLD LOUGHTONIANS HOCKEY CLUB

A FINAL WORTH REMEMBERING – GRAB YOUR OFFICIAL PRINTED PROGRAMME!

Out of all the teams across the country, you're one of the few who made it this far – so first things first, congratulations!

To mark the occasion, England Hockey provides a free digital programme for every final – available to download, keep, and print from:
www.englishockey.co.uk/competitions-and-events/programmes

BUT LET'S BE HONEST... SOME MOMENTS DESERVE MORE THAN A PDF.

That's why we've teamed up with passionate print partners to give you the chance to own a professionally printed, high-quality A5 colour souvenir programme – something special to keep in your memory box for years to come.

A little piece of history. Not just a programme.

ORDER YOUR HARD COPY PROGRAMME HERE:

[www.jmscreative.co.uk/
ehprogrammes](http://www.jmscreative.co.uk/ehprogrammes)

**16–28 pages: £9.99 • Over 28 pages: £14.99.
Add results for £5.00.**

This process will be managed by our programme partners
JMS Creative.



SPECIAL TEAM DEAL...BUY 10 GET 10 HALF PRICE!

PLUS...

- **FREE inputting of results** (optional)
- **FREE photo page - send us your chosen photos and we'll replace this page in your printed programme with a montage of memories from your Big Day!** (Optional. Page will be placed next to the match schedule for your age group).

TOP TIP - thinking of a team bulk buy? Share the cost between the parents in your squad to ensure that every player gets a unique keepsake of their Big Day!



WELCOME

FROM RICH BEER, ENGLAND HOCKEY

We are delighted to welcome participating teams to the In2Hockey finals.

We congratulate the schools and clubs here today on winning their Area competitions. We hope that players enjoy the experience of playing against their peers from around the country for the first time.

Our thanks go to all the team officials who have dedicated a lot of time to the development of each team. We know that their commitment is very much appreciated by the players and parents.

We are pleased that the tournaments will be umpired by young umpires, nominated by Area Officiating Committees, supported by a team of coaches, who, along with many of our senior international umpires, saw participation at this event as an important first step in their officiating career. This event is in place to give development opportunities for both players and coaches and we trust spectators will recognise this and support all who are taking part.

All team and tournament officials are part of the thousands of people in our sport who continue to help hockey move forwards. This tournament may well be the last event of the season for you and we hope you will get a well-deserved break before plans for next season start to take shape.

Today's event ends a busy couple of months of domestic hockey finals. After this our focus now turns to the international game and you will see our Pro League matches advertised elsewhere in the programme. It would be great to see young players from this tournament looking to aspire and learn from the England squads and enjoying our excellent international event experience.

We thank the team at Old Loughtonians Hockey Club for providing their hockey facilities, allowing us to host days such as today, bringing over 300 young people together to enjoy our fantastic sport. We hope it is a memorable day for you all.

TOURNAMENT OFFICIALS

TOURNAMENT DIRECTOR

Jo BARNES, Tom ROBERTS (Asst)

EVENT MANAGER

Jo THOMAS-ELLIS

COMPETITION MANAGER

Jane JELLEY

JUDGES

Andy BARNES, Lesley BAYNE,
Victoria BENEDIKZ, David COOPER,
Luke DAWKIN, Craig LANGTON,
Yvonne McCARTNEY, Pritpal SAGOO

UMPIRE SUPPORT

Tony ROLLINS, Annette HARVEY,
Mia DEWING, Max DAVIDSON,
Jess SMITH, Rhydian BURSTON

UMPIRE MANAGERS

Will DAVEY, Josh ROBINSON,
Harry RAFFAN

UMPIRES

Noah APPLEBY, Melanie BENEDIKZ,
Cooper CROOK, Abi DIXON,
Jake DRIVER, Muiris CAPON-TELFORD,
Torin HARINGTON-FULLER,
Adam HERBERT, Harvey HOLMAN,
George LAWSON, Rhys MACPHEE,
Samuel MEYER, Nina SHELLEY,
Daniel SIMPSON, Will RICHARDSON,
Keira WILLOTT, Sam WRIGHTSON

ANNOUNCER

Sydney DAVIES

U13 SCHOOLS POOLS

FRIDAY'S SCHEDULE

Girls
Open/Boys

GIRLS POOL A



Cheadle Hulme School

Norh West Qualifiers

Gresham's School

East Qualifiers

Kingston Grammar School

London Qualifiers

Millfield Preparatory School

West Qualifiers

GIRLS POOL B



Epsom College

South East Qualifiers

The Grammar School at Leeds

Yorkshire & NE Qualifiers

King Edward VI School, Southampton

South Central Qualifiers

Repton Preparatory School

Midlands Qualifiers

OPEN/BOYS POOL C



Caldway Grange Grammar School

North West Qualifiers

Framlingham College

East Qualifiers

St Neot's Preparatory School

South Central Qualifiers

Yarm School

Yorkshire & North East Qualifiers

OPEN/BOYS POOL D



Kingswood School

West Qualifiers

Reed's School

South East Qualifiers

Repton Preparatory School

Midlands Qualifiers

Whitgift School

London Qualifiers

			PITCH NO	
11.00	Gresham's	Kingston Grammar	1A	Pool A
	Cheadle Hulme	Millfield	1B	Pool A
	Framlingham	Caldway Grange	2A	Pool C
	St Neot's	Yarm	2B	Pool C
11.40	Repton	KES Southampton	1A	Pool B
	Epsom	GSAL	1B	Pool B
	Whitgift	Repton	2A	Pool D
	Reeds	Kingswood	2B	Pool D
12.20	Kingston Grammar	Cheadle Hulme	1A	Pool A
	Millfield	Gresham's	1B	Pool A
	Caldway Grange	St Neot's	2A	Pool C
	Yarm	Framlingham	2B	Pool C
13.00	KES Southampton	Epsom	1A	Pool B
	GSAL	Repton	1B	Pool B
	Repton	Reeds	2A	Pool D
	Kingswood	Whitgift	2B	Pool D
13.40	Cheadle Hulme	Gresham's	1A	Pool A
	Millfield	Kingston Grammar	1B	Pool A
	St Neot's	Framlingham	2A	Pool C
	Yarm	Caldway Grange	2B	Pool C
14.20	GSAL	KES Southampton	1A	Pool B
	Epsom	Repton	1B	Pool B
	Reeds	Whitgift	2A	Pool D
	Kingswood	Repton	2B	Pool D
15.30	3rd Pool A	3rd Pool B	1A	5/6
	4th Pool A	4th Pool B	1B	7/8
	3rd Pool C	3rd Pool D	2A	5/6
	4th Pool C	4th Pool D	2B	7/8
16.10	1st Pool A	1st Pool B	1A	Final
	2nd Pool A	2nd Pool B	1B	3/4
	1st Pool C	1st Pool D	2A	Final
	2nd Pool C	2nd Pool D	2A	3/4

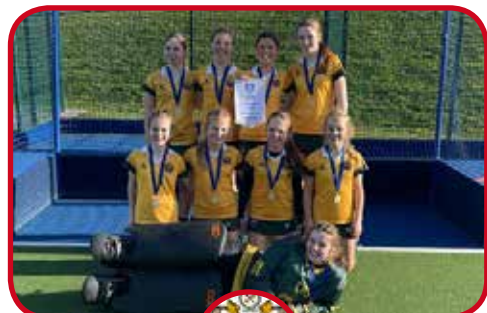
For live scores across all competitions see

<https://englandhockey.altiusrt.com/>

Matches 12 minutes each way, 2 minutes Half Time in 40 min windows

GIRLS POOL A

U13 SCHOOLS



CHEADLE HULME SCHOOL



GRESHAM'S SCHOOL



KINGSTON GRAMMAR SCHOOL



MILLFIELD SCHOOL

1	Lucy McGRATH (GK)
2	Phoebe ADAMS-MERCER
3	Sienna EVANS
4	Parker FERNYHOUGH
5	Leila HOLT
6	Pippa KINSELLA
7	Bella PRESTON (C)
8	Ella TEBBUTT
9	Anni WEST
10	Hollie WILLIAMSON

3	Mollie ALLEN
4	Beattie FOWLER (C)
6	Tallula CASWELL
9	Winnie BAILEY
10	Ottilie BEST
12	Darcey BRENNAN (GK)
13	Sophie MACK
17	Megan LENNON (C)
29	Olivia McMILLAN
67	Gabriella HILLIER

1	Emma MOULLIN (GK)
2	Olive McCARTHY (C)
3	Amelie MULLEAGUE
4	Maggie MERRY
5	Lucia DUGGAN
6	Martha LLOYD
7	Evie BRIMBLE
8	Matilda CAHALAN
9	Annie MARSH
10	Eliora ABDULAZIZOVA

1	Sofia LOVELL (GK)
3	Mia WHITTON
5	Lowri SINKINS-MOYSEY (C)
6	Sophia EDWARDS
7	Jess HILTON (C)
9	Tabby WOOD
10	Martha SMITH
12	Amelie HAWKINS

THE MANAGEMENT TEAM

COACH
Stefan **RAY-HILLS**

MANAGER
Sacha **HATELEY**

THE MANAGEMENT TEAM

COACH
Joe **COWAN**

MANAGERS
Thomas **LING**
Anna **HORSLEY**

THE MANAGEMENT TEAM

COACHES
Nathan **SINCLAIR**
Becky **MANTON**

MANAGER
Callum **MACKENZIE**

THE MANAGEMENT TEAM

COACHES
Denise **BODMAN**
Henry **SWAN**

MANAGER
Ben **HILTON**

GIRLS POOL B

U13 SCHOOLS



EPSOM COLLEGE



THE GRAMMAR SCHOOL AT LEEDS



KING EDWARD VI SCHOOL, SOUTHAMPTON



REPTON PREPARATORY SCHOOL

1	Harri WHEELER (GK)
2	India-Belle BRAITHWAITE (C)
3	Emilie BROWN
4	Lucie TURTLE
5	Lysia GARRARD
6	Melissa MARKU
7	Scarlett ALLIS
8	Cecily McDONALD
9	Brooke MARTIN
10	Eva DALE

1	Mia SMITH (GK)
3	Tilly O'BRIEN (C)
6	Athena COOPER
6	Melissa WARD
7	Anaisha KHAN
8	Hannah MacEACHERN
11	Samaira ANAND
12	Liv ROBSON
14	Lucia PEECOCK
15	Milla VILARRUBI

1	Lotta FARR (GK)
7	Ottile HENDERSON
11	Rosie GOULDEN
12	Rosie VINCENT (C)
13	Felicity KNIBB
18	Anna BALDOCK
22	Daisy SAVAGE
28	Eliza BERTRAM (C)
39	Annabelle POPE

1	Annie THOMPSON (GK)
2	Henny SHEPPARD
3	Simrit MANN
4	Emily PARKER
5	Emily EDWARDS (C)
6	Millie HODGES
7	Gabriella BOWN
8	Jenny WYATT-SHANNON
9	Lily AMIN
10	Maya OTSUKI

THE MANAGEMENT TEAM

COACH
Erica **SANDERS**

MANAGER
Brett **GARRARD**

THE MANAGEMENT TEAM

COACH
Lewis **BUTCHER**

MANAGER
Charlotte **DODDS**

THE MANAGEMENT TEAM

COACHES
Aimee **TIMMS**
Lucy **LISTER**

MANAGER
Dan **KENT**

THE MANAGEMENT TEAM

COACH
Sam **MANSFIELD**

MANAGERS
Milly **HYATT**
Russell **ANDERSON**

OPEN/BOYS POOL C

U13 SCHOOLS



CALDAY GRANGE
GRAMMAR SCHOOL



FRAMLINGHAM
COLLEGE



ST NEOT'S
PREPARATORY SCHOOL



YARM
SCHOOL

1	Leo COOKSON (GK)
2	Jack HOGAN
3	Thomas McKENZIE
4	Jamie RUSHTON (C)
5	James HOWELL
6	Theo BAKER
7	Milo MURPHY
8	Thomas DAVIES
9	Ali GIBSON
10	Jonny O'CONNELL

1	Josh PAPWORTH-HEIDEL (GK)
2	Arthur DICKINS
4	Charlie WILLIAMS-BECKETT
5	Harry RODWELL
6	Bay LYLES
7	Griff LAWLEY
9	Jacobus OLIVIER (C)
10	Finley MAY
11	Barney READER

1	Theodore SMITH (GK)
7	Oscar HARMER (C)
8	Felix FINCHAM
9	Joseph RANDALL
10	Hugo HARMER
11	Edward LEWIS
13	Jack STEEL
17	Luc SUMTER

1	Vihaan LALL (GK)
3	Lewis DARGUE
4	Ronav GOWDA
5	Ben WARD
6	Jenson CHEN
7	Phoenix EMADI
8	Max JOLLY
9	Miles PAGE
10	Rex WHITE (C)
11	Flynn NUNNERY

THE MANAGEMENT TEAM

COACH
Sean **KITCHEN**

MANAGER
James **CUNLIFFE**

THE MANAGEMENT TEAM

COACHES
Lisa **LETCHFORD**
Cameron **GREENHALL**

MANAGER
Andy **NORTHCOTE**

THE MANAGEMENT TEAM

COACH
Richard **EDWARDS**

MANAGERS
Rebecca **STEEL**
James **DINSDALE**

THE MANAGEMENT TEAM

COACH
Dave **SKIRVING**

MANAGER
Gary **FERGUSON**

OPEN/BOYS POOL D

U13 SCHOOLS



KINGSWOOD SCHOOL



REED'S SCHOOL



REPTON PREPARATORY SCHOOL



WHITGIFT SCHOOL

1	Elliot KHO (GK)
2	Louie ANDERSON (C)
3	James BRADFORD
4	Will BREEN
5	Freddie CALVERT-JONES
6	Pin FONG
7	Edward LLOYD
8	Luca MARIN
9	Jonny MORTIMER
10	Noah SARGANT

1	Joshua TULLEY (GK)
2	Landon DE GOEDE
3	Benji COX
4	Gabriel BAYNES
5	Deacon O'NEILL
6	Thomas GRAVES
7	Dylan BAREHAM (C)
8	Edward HODGES
9	George CONNOR
10	Ben SPRINGETT

1	Freddie JONES (GK)
2	Hugo BAILEY
3	Henry MILLER
4	Alvaro GORDILLO
5	Harry JOHNSTON (C)
7	Archie NAYLOR (C)
8	Teddy WILTON
9	Charlie GOODE
10	Alexander PARKINSON (C)
11	Joe OTSUKI

1	Rhys PATEL (GK)
2	Leo SAVILLE
3	Ned KEY
5	Tom BRAIN (C)
6	Asier BERNA
7	Nico BINES
8	Miles STURCH-HIBBITT
9	Nate THOMAS
10	Darwin VUONONVIRTA
11	Alex DEMPSEY

THE MANAGEMENT TEAM

COACH
James **HILLS**

MANAGER
John **JACKSON**

THE MANAGEMENT TEAM

COACHES
Mike **WILLIAMSON**
Charlie **NEAT**

MANAGER
Andy **WATTS**

THE MANAGEMENT TEAM

COACH
Sam **MANSFIELD**

MANAGERS
Milly **HYATT**
Sam **COSSEY**
Russell **ANDERSON**

THE MANAGEMENT TEAM

COACH
Karl **STAGNO**
Jonty **GRIFFITHS**

MANAGER
Stuart **LITCHFIELD**



Harrod Sport™

The original since 1954

**30%
DISCOUNT***
TO ENGLAND HOCKEY
AFFILIATED CLUBS
DISCOUNT CODE:
ENGLANDHOCKEY30



WE ARE SPORT, WE ARE HOCKEY

harrodsport.com

Proud suppliers to multiple Olympic Games and official goals and nets supplier to England Hockey.



@harrodsport

*discount eligible for England Hockey affiliated clubs.



**BE
THERE
LIVE**

SECURE YOUR TICKETS 13 - 28 JUNE



FIH HOCKEY PRO LEAGUE LONDON 2026

U12 CLUBS POOLS

SATURDAY'S SCHEDULE

Girls
Open/Boys

GIRLS POOL A



Cambridge City

East Qualifiers

Fylde

North West Qualifiers

Stourport

Midlands Qualifiers

Surbiton

London Qualifiers

GIRLS POOL B



Clifton Robinsons

West Qualifiers

Knole Park

South East Qualifiers

Oxford

South Central Qualifiers

Thirsk

Yorkshire & NE Qualifiers

OPEN/BOYS POOL C



Alderley Edge

North West Qualifiers

North Stafford

Midlands Qualifiers

Sevenoaks

South East Qualifiers

Spencer

London Qualifiers

OPEN/BOYS POOL D



City of York

Yorkshire & NE Qualifiers

Clifton Robinsons

West Qualifiers

Haslemere

South Central Qualifiers

Hertford

East Qualifiers

			PITCH NO	
11.00	Cambridge City	Surbiton	1A	Pool A
	Stourport	Fylde	1B	Pool A
	Spencer	North Stafford	2A	Pool C
	Alderley Edge	Sevenoaks	2B	Pool C
11.40	Oxford	Knole Park	1A	Pool B
	Clifton Robinsons	Thirsk	1B	Pool B
	Hertford	Haslemere	2A	Pool D
	Clifton Robinsons	City of York	2B	Pool D
12.20	Surbiton	Stourport	1A	Pool A
	Fylde	Cambridge City	1B	Pool A
	North Stafford	Alderley Edge	2A	Pool C
	Sevenoaks	Spencer	2B	Pool C
13.00	Knole Park	Clifton Robinsons	1A	Pool B
	Thirsk	Oxford	1B	Pool B
	Haslemere	Clifton Robinsons	2A	Pool D
	City of York	Hertford	2B	Pool D
13.40	Stourport	Cambridge City	1A	Pool A
	Fylde	Surbiton	1B	Pool A
	Alderley Edge	Spencer	2A	Pool C
	Sevenoaks	North Stafford	2B	Pool C
14.20	Clifton Robinsons	Oxford	1A	Pool B
	Thirsk	Knole Park	1B	Pool B
	Clifton Robinsons	Hertford	2A	Pool D
	City of York	Haslemere	2B	Pool D
15.30	3rd Pool A	3rd Pool B	1A	5/6
	4th Pool A	4th Pool B	1B	7/8
	3rd Pool C	3rd Pool D	2A	5/6
	4th Pool C	4th Pool D	2B	7/8
16.10	1st Pool A	1st Pool B	1A	Final
	2nd Pool A	2nd Pool B	1B	3/4
	1st Pool C	1st Pool D	2A	Final
	2nd Pool C	2nd Pool D	2A	3/4

For live scores across all competitions see
<https://englandhockey.altiusrt.com/>

Matches 12 minutes each way, 2 minutes Half Time in 40 min windows

GIRLS POOL A

U12 CLUBS



CAMBRIDGE CITY



FYLDE



STOURPORT



SURBITON

3	Lily ERU
4	Aoife McKINNEY
7	Saskia ADDIS
8	Eve GREEN
10	Arabella WALLACE (C)
11	Georgie UNDERWOOD
12	Naiara HAYES
13	Jessica PECKETT (GK)
15	Lois MacPHERSON

1	Olivia FORD (GK)
2	Millie O'MAHONEY
3	Philippa PEARSON
4	Alexa TAYLOR
5	Winnie VAN RIJN (C)
6	Techari TAYLOR
7	Marianne BARNES
8	Cerys TWOSE
9	Jessica WATTS
10	Iris JAMES

359	Jasmine ORGEE
368	Amelie DAVIS-BEARD
393	Emmeline ROUND
396	Lila WARWICK
399	Felicity SKIDMORE (GK)
402	Arabella MOSEY
410	Becky DUNNETT (C)
422	Molly Jean SIMPSON
427	Tilly PRIOR
560	Maia GOOLD

1	Lulu SHEPHERD (GK)
6	Darcy AYNSLEY
16	Cleo HARDING
17	Clodagh MARSH
18	Liberty Rose WATSON (C)
22	Elizabeth BROWN
24	Lyla WATERS
27	Lydia JESMAN
44	Amelia BROWN
344	Emily STACEY

THE MANAGEMENT TEAM

COACHES
Ann CORCORAN
Rob HAYES

MANAGER
Bryony UNDERWOOD

THE MANAGEMENT TEAM

COACH
Rebecca WORTHINGTON

MANAGER
Holly TWOSE

THE MANAGEMENT TEAM

COACH
James TERRY

MANAGERS
Ben DUNNETT
Hannah ORGEE

THE MANAGEMENT TEAM

COACH
Tarek ABDULLA

MANAGER
Ceci RODRIGUEZ-TURANO

GIRLS POOL B

U12 CLUBS



CLIFTON ROBINSONS



KNOLE PARK



OXFORD



THIRSK

- 31** Ingrid **COTEI-BRATESCU** (GK)
- 321** Hettie **GRINDAL** (C)
- 323** Immy **SIMMONDS**
- 324** Ella **McCORMACK**
- 325** Pearl **BAILEY**
- 326** Greta **GIOVARRUSCIO**
- 327** Poppy **PHILLIPS**
- 328** Lottie **FARR**
- 329** Lottie **BANKS**
- 330** Martha **WILSON**

- 76** Enise **PERERA**
- 101** Isabe **NEL** (GK)
- 102** Mollie **HARPER** (C)
- 105** Ciara **CRAIG** (C)
- 106** Charlotte **HAYES**
- 107** Anna **WOOD**
- 108** Iris **LINDSAY**
- 109** Alice **VARLEY**
- 112** Sophia **KEELAN**
- 115** Isabel **ELZINGA**

- 1** Grace **BOTSMAN** (GK)
- 3** Alba **BOCCI** (C)
- 4** Amelie **BROWN**
- 5** Grace **M**
- 7** Phoebe **WORRALL**
- 8** Charlotte **EASDALE**
- 11** Rosie **DOLLEYMORE**
- 24** Gwendolen **FEDDERSEN**
- 88** Kitty **MUMME-YOUNG**
- 99** Jemima **SAUNDERS**

- 1** Beatrice **COLCOMBE** (GK)
- 18** Aletta **KELMAN**
- 24** Poppy **LAWSON**
- 25** Venetia **BUTLER**
- 32** Lucinda **APPLEBY**
- 35** Georgina **PROCTOR** (C)
- 36** Vita **BOURNE-ARTON**
- 37** Jemima **MARSHALL**

THE MANAGEMENT TEAM

COACH
Louise **CATCHPOLE**

MANAGER
Hayley **JOSLING**

THE MANAGEMENT TEAM

COACH
Ruth **BINGHAM**

MANAGER
Pollyanna **HARPER**

THE MANAGEMENT TEAM

COACH
John **FEDDERSEN**

MANAGER
Katherine **FEDDERSEN**

THE MANAGEMENT TEAM

COACH
Nathan **BESWICK**
Paul **BARLOW**

MANAGER
Jo **GRAY**



ALDERLEY EDGE



NORTH STAFFORD



SEVENOAKS



SPENCER

100	Thomas RILEY
101	Freddie TILLING-JONES (GK)
102	Henry DENSEM
103	Max HEALEY
105	Oliver TE
106	Rory MURISON
108	Maks OPLINSKI
109	Max CLEMENTS
167	Charlie ELLIS (C)

1	Ramsay GLASS (GK)
2	Macsen DAVIES
3	Charlie ROSS
4	Joe BRIDGWOOD
5	Oscar BOURAS
6	Benjamin HERBERT
7	William KIRK
8	Roddy GLASS
9	Seb RATCLIFFE
10	Albert BASSETT (C)

1	Lewis SHEA (GK)
3	Rufus FLETCHER
190	Mats DUNNING
254	Austin RICHARDSON
349	Hugo MORRISON
351	Oliver KEMP
354	Charles SAVAGE
356	Joey SALMON
357	Benedict GOSSAGE
365	Jacob BAILEY

17	Rory BIRMINGHAM (GK)
23	Alex BAMBER (C)
25	Gabriel COLLIER
27	Olly CROWTHER
29	Asa COHEN
39	Lucas FALCI-STAELENS
41	Oliver FALCI-STAELENS
45	Josiah FLETCHER
65	Isaac PATEL
67	Leo PIPER

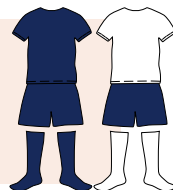
THE MANAGEMENT TEAM

COACHES
James **RILEY**
Ethan **TE**
MANAGERS
Gemma **OPLINKSI**
Robert **JONES**



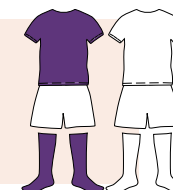
THE MANAGEMENT TEAM

COACHES
David **WASHINGTON**
Laurence **BASSETT**
MANAGER
Richard **KIRK**



THE MANAGEMENT TEAM

COACH
Rory **MYLROI**
MANAGER
Michelle **KEMP**



THE MANAGEMENT TEAM

COACHES
James **PIPER**
Nick **CROWTHER**
MANAGER
Pieter **STAELENS**





CITY OF YORK



CLIFTON ROBINSONS



HASLEMERE



HERTFORD

1	Hamish RAPSON (GK)
3	Jack BESSEY
9	Dylan LEE-BURNSALL
12	Normando NORZA
13	Sam CRAVEN
28	Tom BLOMFIELD
75	Oliver POOLE
77	Harris GAUNT-EDWARDS
87	Barnaby GILBERTSON (C)
96	Jonathan PHILIPOSE

2	Alex LINCOLN
3	Freddie SMITH
6	Barney THOMPSON
7	Bear POWER (C)
9	Fergus SALTER
10	Fergus ALLEN (C)
12	Louis LE TOCQ
13	Jackson JONES
14	Oscar LANSDOWN (GK)
16	Oliver WILLIAMS

96	Tommy TAYLOR
333	William KESSELL
334	Lucas BORWICK
405	Christopher SCHOLES
410	Cameron KIRK (C)
440	Robert BOARDMAN
443	Henry WAKEFIELD
454	Albie HOLT
459	Rupert MYERS
460	Leo VAN LEEWUEN (GK)

1	Roman McMILLAN (GK)
155	Xavier SAW
166	Greyson TOVEY-ARTIS (C)
168	William SHORT
179	Thomas RIPPON
187	Alexander LIVINGS
198	Alex ARMSTRONG
225	Theo CATT
228	Billy MARSDEN
239	Cameron McMILLAN

THE MANAGEMENT TEAM

COACHES
Ian **CRAVEN**
Hugo **McCULLOGH**

MANAGER
Stephen **GAUNT-EDWARDS**

THE MANAGEMENT TEAM

COACH
Ian **KING**
Jon **LANSDOWN**

MANAGER
Chris **THOMPSON**

THE MANAGEMENT TEAM

COACH
Ben **SMITH**

MANAGER
Sarah **SCHOLES**

THE MANAGEMENT TEAM

COACH
Adam **PRICE**
Alec **SHORT**

MANAGER
Dan **LIVINGS**

ROLL OF HONOUR

CLUBS		SCHOOLS		
U12 BOYS	U12 GIRLS	U13 BOYS	U13 GIRLS	
2024-25	Harleston Magpies	Surbiton	Whitgift	Surbiton High
2023-24	Woking	Surbiton	Warwick	Loughborough High
2022-23	Surbiton	Knole Park	Whitgift	Surbiton High
2021-22	Wimbledon	Knole Park	Reed's	Surbiton High
2019-21	Not Played	Not Played	Not Played	Not Played
2018-19	Cambridge City	Sevenoaks	Dean Close	Weald of Kent Grammar
2017-18	Canterbury/Surbiton	Surbiton	St Lawrence	St Teresa's
2016-17	Canterbury	Sevenoaks	St Lawrence/Dean Close	St Teresa's/Bedford Girls
2015-16	Canterbury	Surbiton	Dean Close/Whitgift	St George's/St Faith's
2014-15	Surbiton	Spencer	Dean Close	Danes Hill Prep
2013-14	Cheltenham/Haslemere	Surbiton	Dean Close/Whitgift	Danes Hill Prep
2012-13	Guildford	Worcester/Surbiton	Brandeston Hall	Eagle House
2011-12	Team Bath Buccs	Surbiton	Kingston G./Queens	Cranleigh Prep
2010-11	Wycombe	Surbiton	Whitgift	Kent
2009-10	Canterbury	City of York	Millfield	St George's

CLUBS & SCHOOLS COMBINED				
U13 BOYS	U13 GIRLS	U11 BOYS	U11 GIRLS	
2008-09	Old Loughtonians HC	Kingston Grammar	Canterbury HC	St George's College
2007-08	Ipswich School	Cheltenham Junior	Millfield School	Millfield School
2006-07	Clifton College	Felsted School	Belper	Felsted School
2005-06	Ipswich School	Belper HC	Forres Sandle Manor School	Belper HC
2004-05	Ipswich School	Belper HC	Belper HC	Orwell Park School
2003-04	Bowdon HC	Belper HC	Cannock HC	Wakefield School
2002-03	Kent College	Millfield School	Greshams School	Belper HC
2001-02	Alderley Edge HC	Felsted Prep School	Beeston	Belper HC
2000-01	Greshams School	Gosport Borough HC	St George's College	Millfield HC
1999-00	Greshams School	Clifton College	Cifton College	St George's College
1998-99	St George's College	Guildford HC	Greshams School	Millfield School
1997-98	Millfield Junior School	Bradford Grammar	Greshams School	Gosport Borough HC
1996-97	Canterbury HC	Portishead Firebrands HC	Kent College	Kirkham Grammar
1995-96	Millfield Junior School	John Taylor High School	St George's College	St Andrews School
1994-95	Monkton Combe School	Herne Bay HC	Woburn Hill School	St Andrews School
1993-94	St George's College	Dame Alice Harpur	Durlston Court School	Blackpool HC
1992-93	Perse School	Herne Bay HC	Woburn Hill School	Mowden School



OFFICIAL TEAM PHOTOS PRINTED ON-SITE

Official team photos available on-site
with pricing starting from just £20
(Pricing discounts available only on-site)

Printed instantly

Images are available on-site
& online at the following link:

takethatphotoimages.co.uk

Password: ehb26

takethatphoto
our photos, your story





MIZUNO HOCKEY

WORLD CLASS, HEAD TO TOE.