



US

UNIVERSITY
OF SUSSEX

Succeed in the world

INTERNATIONAL STUDY CENTRE
PROSPECTUS

www.sussex.ac.uk/isc

Contents

Welcome **3**

Experience a life-changing education **4**

Brighton, a city that excites **6**

Campus life that inspires **7**

Your International Study Centre **8**

Prepare for your future career **10**

International Foundation Year **12**

International Year One **16**

Pre-Masters **20**

English language courses **24**

Support that matters **25**

Accommodation that feels like home **26**

Welcome

Welcome to the University of Sussex.

With a curriculum that's been carefully designed to align with courses at the University, studying at the International Study Centre gives you the best opportunity to fulfil your ambition of becoming a student at the University of Sussex.

In choosing to study at Sussex, you will be joining an international community of staff and students from over 145 countries.

David Maguire
Interim Vice-Chancellor
University of Sussex

At the University of Sussex International Study Centre we help you to take that important next step towards academic success. You will have the complete UK student experience: classes with inspirational and creative tutors, support from our dedicated student experience team and opportunities to make lifelong friends from all over the world.

You'll find us 10 minutes from the sunny seaside resort of Brighton, surrounded by the South Downs National Park, and with easy access to London.

We look forward to welcoming you very soon!

Martin Torjussen
Centre Director
University of Sussex
International Study Centre

SUCCEED IN THE WORLD

Experience a life-changing education



RESEARCH THAT DELIVERS

Research is the pathway to progress at the University of Sussex. It is internationally recognised for drawing together leading academics from different disciplines – an approach that delivers the most powerful and meaningful results.

TEACHING THAT COUNTS

Teachers and professors deliver courses designed to inspire you, helping you to develop skills that make your education count, and giving you the confidence to make your mark in your chosen field. Teaching at Sussex is underpinned by original research, so you'll be at the forefront of knowledge in your subject.

LOCATIONS THAT INSPIRE

The Sussex campus has a unique combination of tranquillity and energy, surrounded by a National Park. You can explore the beautiful hills and woodlands of the South Downs whenever you want to.

Adversely, it is only nine minutes by train from Brighton – a vibrant seaside city famous for its pier, beach, shops and thriving art and music scenes.

COMMUNITY THAT WELCOMES

Each year, Sussex gains almost 6,000 new international students from more than a hundred countries, including China, India and Nigeria.

The result is a genuinely multicultural campus that helps you see the world, and your future, in a new way.

**21st
in the UK**

*The Times Higher Education
World University Rankings 2022*

**151st
in the world**

*The Times Higher Education
World University Rankings 2022*

**1st
in the world for
Development Studies**

QS World University Rankings by Subject 2021

**75%
of the University
research is considered
“world leading”**

Research Excellence Framework 2014

Brighton, a city that excites

CREATIVE AND VIBRANT

University of Sussex is a short train ride from Brighton, one of the UK's most vibrant cities. The city is famous for its beautiful seafront, unique shops and markets, and thriving music and art scenes. Brighton also has more than 400 restaurants and cafés, serving cuisine from around the world with food festivals taking over the city's streets throughout the year. Each year, millions of inquisitive tourists visit this inspirational city to experience its friendly and creative atmosphere.

SEASIDE ESCAPE

Brighton's pebble beach is perfect for meeting up with friends for fish and chips, or simply enjoying fresh air and sunshine. You can go for a walk along the promenade or have a go at water sports, such as stand-up paddle boarding. The city's Palace Pier, dating back to 1823, is full of charm with its colourful fairground rides, games arcades and food stalls.

BEAUTIFUL COUNTRYSIDE

Brighton is surrounded by the South Downs National Park. This means that you'll have the opportunity to enjoy stunning views and go for peaceful walks. If you're feeling adventurous, you can also try hiking, mountain biking or even paragliding.





Campus life that inspires

PERFECT LOCATION

The Sussex campus is in a unique location – surrounded by beautiful and peaceful countryside, but also only a short distance from the lively city of Brighton. If you want to explore the rest of the UK, central London is within an hour of Brighton and Gatwick Airport is just 30 minutes away by train.

EVERYTHING YOU NEED

If you are keen to stay closer to campus, at Sussex, you can. You'll find everything you need to live and study comfortably here, from modern classrooms and labs to cosy coffee shops, bars and restaurants. There's also a supermarket, launderette, post office, dentist, pharmacy, health centre and a whole range of sports and fitness facilities.

RELAX AND SOCIALISE

The University of Sussex Students' Union arranges fun student events and activities throughout the year. Choose from comedy and quizzes to gigs, live music and student-led DJ nights.

9
minutes
from the campus
to Brighton
by train

30
minutes
from Brighton
to Gatwick Airport
by train

1
hour
from Brighton
to central London
by train



More information
www.isc.sussex.ac.uk/why-sussex/campus-life

YOUR INTERNATIONAL STUDY CENTRE

Your International Study Centre



The University of Sussex International Study Centre will help you develop your confidence, boost your English language skills and give you the academic knowledge you need to succeed at Sussex, and beyond.

TAKE THE FIRST STEP

Courses at the International Study Centre will prepare you for studying an undergraduate or postgraduate degree at the University at Sussex.

Choose from:

- International Foundation Year: prepares you to start the first year of an undergraduate degree
- International Year One: prepares you to join the second year of an undergraduate degree
- Pre-Masters: prepares you to start a postgraduate degree

SETTLE IN

We are committed to helping you have an unforgettable experience at Sussex. Our friendly staff at the International Study Centre will be on hand to provide support and advice, and we'll organise a range of exciting activities to help you get used to living in the UK. You will also have full access to university facilities, so you can get involved with campus life from day one.

STAY ON TRACK

Our tutors are experts in teaching ambitious international students like you. We will review your progress on an ongoing basis to ensure that you are developing to the best of your ability. We will tailor our support to match your individual needs, encourage you to reach your goals and help you make your future.

BUILD YOUR CONFIDENCE

You will learn in a supportive environment that offers small class sizes and individual tutor attention. We will develop your confidence and introduce you to university style assessment and teaching, so that you know exactly what to expect when you start your degree. You will take part in seminars, tutorials and lectures, learn how to give effective presentations and take part in classroom discussions.

FOCUS ON YOUR CAREER

We know that you may already be thinking about your future career, which is why we have integrated a new careers service into our academic courses at the International Study Centre. We will guide you towards making the right choices and give you the tools you need to stand out in the competitive graduate job market.

93%
of students who completed
their ISC course progressed
to a degree course at the
University of Sussex
in 2021



More information
www.sussex.ac.uk/isc

Prepare for your future career



At the International Study Centre, we care about your academic success - as well as your career once you graduate. With your future career in mind, we have integrated a variety of employability activities into our academic courses at the International Study Centre. These employability activities are designed to give you a head start in today's competitive graduate employment market by helping you become a confident, highly - skilled and employable graduate.

All activities are tailored to your level of study, whether you are preparing for undergraduate or postgraduate study. With our support you will identify your strengths, develop your skills for success and focus on areas for improvement, enabling you to maximise your chances of success at the University of Sussex and achieve your future goals.



“I feel more confident and comfortable with my future career because I’ve developed the skills that will help me progress.”

Alison from Peru

Studied International Foundation Year
Life Sciences and Psychology





“The benefit of studying at the International Study Centre is they prepare you for university. So when you start your course you have an idea on how to take notes, and writing and reading.”

Rehab from Saudi Arabia

Studied International Foundation Year in Life Sciences & Psychology
Progressed to BSc (Hons) Biomedical Science

International Foundation Year

GENERAL ENTRY REQUIREMENTS

ACADEMIC

Good high school graduation
grades or equivalent

ENGLISH LANGUAGE

Two semester course:

Academic IELTS for UKVI 5.0
overall (minimum 5.0 in writing)
or equivalent

Three semester course:

Academic IELTS for UKVI 4.5
overall (minimum 4.0 in all skills)
or equivalent

AGE

17 years of age, or older

COURSE FACTS

ENTRY DATES

Two semester:

September or January

Three semester:

June or September

LENGTH

Two or three semesters

STRUCTURE

You will study a variety of
academic modules plus
Academic English Skills.

The three semester International Foundation
Year is subject to validation

COURSE BENEFITS

- Option to change your pathway
and/or progression degree
- Access to a wide range
of progression degrees
- Teaching style mirrors that
of the University, preparing
you for undergraduate study
- Ability to further improve your
level of English through the
three semester course option

CHOOSE YOUR SUBJECT ROUTE

Business, Media and Social Sciences

Offering pathways in:

- Business, Management
and Economics
- Film and Media
- Social Sciences, Global Studies
and Law

Science and Engineering

Offering pathways in:

- Life Sciences
- Psychology
- Computing
- Engineering

YOUR ASSESSMENT

We will assess your progress
regularly to ensure you are on
track to complete your course
successfully, so that you can go
on to study your chosen degree at
Sussex. You'll be assessed through
many different activities, which
may include exams, seminar
discussions, group projects,
presentations, essays, practical
reports and software exercises,
depending on your subject route.



More information

[www.isc.sussex.ac.uk/our-courses/
international-foundation-year](http://www.isc.sussex.ac.uk/our-courses/international-foundation-year)

BUSINESS, MEDIA AND SOCIAL SCIENCES

If you have an interest in studying an undergraduate degree in Business, Media or Social Sciences, this course can take you there. Through this subject route you can gain access to a wide range of dynamic, enterprising degrees that will open up a variety of career options.

CORE ACADEMIC MODULES

At the start of your programme, you will choose one of the following pathways to study:

- Business, Management and Economics
- Film and Media
- Social Sciences, Global Studies and Law

During the programme, you can continue on your chosen pathway, or you can choose to change your pathway and/or final progression degree from any of the routes within the course



PATHWAY MODULES

In your final semester of study, you will be asked to select three academic modules from 13 available. Your options will depend on the pathway you have chosen, whether you choose to continue with your subject from the previous semester or make a change.

Business, Management and Economics

- Accounting and Finance
- Core Mathematics
- Economics
- Management
- Marketing

Social Sciences, Global Studies and Law

- English Legal System
- International Development
- International Relations
- Sociology: Crime and Deviance

Film and Media

- Creative Media Technologies: Digital Video
- Creative Media Technologies: Photography
- Global Cinemas
- Media and Communications

You will also study Academic English Skills and CareerAhead during the programme.

PROGRESSION DEGREES

BSc (Hons) Accounting and Finance

BSc (Hons) Business and Management Studies

BA (Hons) International Development

LLB Law

BA (Hons) Media and Communications



More information

For the full range of International Foundation Year progression degrees and module descriptions, please visit www.isc.sussex.ac.uk/our-courses/international-foundation-year

13th
in the UK
for Business and Economics
*Times Higher Education World University
Rankings by Subject 2022*

SCIENCE AND ENGINEERING

If studying an undergraduate degree in a Science or Engineering field is your goal, you may be suited to this course. Get the opportunity to study one of many technically insightful degrees by studying this subject route, and take the first step to further your career aspirations.

At the beginning of your programme, you will choose one of the following pathways:

- Computing
- Engineering
- Life Sciences
- Psychology

CORE ACADEMIC MODULES

You will learn about the fundamental concepts and skills relating to your chosen pathway, as well as two core modules, which are:

- Introduction to Science
- Mathematics

During the programme, you can continue on your chosen pathway, or you can choose to change your pathway and/or final progression degree providing you meet the entry requirements.

PATHWAY MODULES

In your final semester, you will study four focused modules from the pathway of your choice. These are as follows:

Computing

- Computing Project
- Database Design and Development
- Object Oriented Programming with Java
- Website Design and Development

Engineering

- Exploring Physics
- Mechanics on the Go
- Mechanics on the Move
- Physics at Work

Life Sciences

- Biochemistry and Physiology
- Genetics and Evolution
- Organic and Redox Chemistry
- Physical Chemistry

Psychology

- Investigating Psychology
- Key Studies in Psychology
- Psychology in the Real World
- Research Methods in Psychology

You will also study Academic English Skills and CareerAhead during the programme.



PROGRESSION DEGREES

Progression from Sciences and Engineering

BEng (Hons) Automotive Engineering

BSc (Hons) Computer Science and Artificial Intelligence

BEng (Hons) Electrical and Electronic Engineering

BEng (Hons) Mechanical Engineering

BSc (Hons) Psychology



More information

For the full range of International Foundation Year progression degrees and module descriptions, please visit www.isc.sussex.ac.uk/our-courses/international-foundation-year

Joint 12th
in the UK
for Mechanical Engineering

The Guardian University
Guide 2022



“By virtue of being a Sussex student, and also as an International Study Centre student, you end up understanding that there’s so many opportunities that are presented to you. By having these opportunities, then you can take advantage of them; you’re programmed to be well-rounded.

By being well-rounded, you want to do as much in every different field as possible, so that you can enrich your CV.”

Elmi from Kenya

Studied International Foundation Year in Life Sciences & Psychology
Progressed to BSc (Hons) Biomedical Science

International Year One

GENERAL ENTRY REQUIREMENTS

ACADEMIC

Good high school graduation grades or equivalent, plus one year of further study

ENGLISH LANGUAGE

Academic IELTS for UKVI 5.5 overall (minimum 5.5 in writing) or equivalent

AGE

17 years of age, or older

COURSE FACTS

ENTRY DATES

September or January

LENGTH

Two semesters

STRUCTURE

Three subject modules per semester, plus Academic English Skills and CareerAhead

COURSE BENEFITS

This course is equivalent to the first year of an undergraduate degree. Its aim is to fully prepare you for joining the second year of your chosen undergraduate degree, so that you can go on to achieve success at Sussex, in your career and in the world.

CHOOSE YOUR SUBJECT ROUTE

The International Year One is offered in the following range of subject routes:

- Business and Management
- Computing
- Engineering
- Film and Media
- Finance and Accounting
- International Relations and International Development

WHAT YOU WILL LEARN

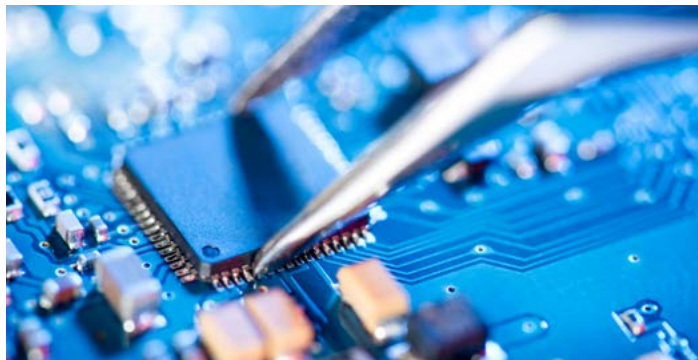
You will study a combination of core and subject-specific modules that focus on teaching you the English language, study skills, employability and academic areas most relevant to your chosen degree at Sussex.

YOUR ASSESSMENT

We will assess your progress regularly to ensure you are on track to complete your course successfully, so that you can go on to study your chosen degree at Sussex. You'll participate in exams, seminar discussions, group projects, presentations and essays, for example, as part of your overall assessment.



More information
[www.isc.sussex.ac.uk/our-courses/
international-year-one](http://www.isc.sussex.ac.uk/our-courses/international-year-one)



BUSINESS AND MANAGEMENT

Studying an undergraduate degree in Business and Management is often a very beneficial career choice. Increase your employability and prepare yourself for a career in business with this subject route.

MODULES

- Academic English Skills
- Digital Data and Decision-Making Skill
- Intrapreneurship and Entrepreneurship
- Introduction to Accounting
- Introduction to Business Management
- Introduction to Economics
- Introduction to Marketing
- Organisational Behaviour

PROGRESSION DEGREES

BSc (Hons) Business and Management Studies
BSc (Hons) International Business
BSc (Hons) Marketing and Management

COMPUTING

Computing is an industry of the future - with an increasing number of businesses seeing the long-term value of computing specialists, there has never been a better time to choose it as your degree specialisation. This subject route will help you get there.

MODULES

- Academic English Skills
- Data Structures and Algorithms
- Further Programming
- Introduction to Computer Systems
- Introduction to Multimedia
- Introduction to Programming
- Mathematical Concepts
- Programming Concepts

PROGRESSION DEGREES

BSc (Hons) Computer Science
BSc (Hons) Computer Science and Artificial Intelligence
BSc (Hons) Computing for Business and Management
BSc (Hons) Games and Multimedia Environments (GAME)
MComp Computer Science

ENGINEERING

Technical, practical and offering a variety of well-paid career options, engineering is a rewarding subject to study at university. To study an undergraduate degree in the field of engineering, look no further than this subject route.

MODULES

Semester 1 and 2

- Academic English Skills
- Global Design Challenge

Semester 1

- Engineering Maths A
- Electrical Circuits and Devices
- Materials and Manufacturing Processes

Semester 2

- Electromagnetism and Introduction to Electrical Machines
- Electromechanics
- Electronic Devices and Circuit Prototyping
- Engineering Maths B
- Engineering Mechanics
- Engineering Thermodynamics
- Programming for Electronic Engineering
- Programming, Technical Drawing and CAD

PROGRESSION DEGREES

BEng (Hons) Automotive Engineering
BEng (Hons) Electrical and Electronic Engineering
BEng (Hons) Mechanical Engineering
BEng (Hons) Mechanical Engineering with Robotics

More information

For up-to-date lists of all International Year One progression degrees, and module descriptions, please visit www.isc.sussex.ac.uk/our-courses/international-year-one



FILM AND MEDIA

From television to radio, photography to journalism, there are many exciting career options in the film and media industry. If you dream of working in this area, this subject route can help you on your way to studying an undergraduate degree in the discipline you love.

MODULES

- Academic English Skills
- Analysing Media Texts
- Approaches to Film and Media Studies
- Connecting Film: Influences and Authorship
- Media Industries: Critical Debates
- Media Production: Digital Video and Sound
- Media Production: Photography and Design
- Studying Film

PROGRESSION DEGREES

BA (Hons) Film Studies

BA (Hons) Media and Communications

BA (Hons) Media Production

FINANCE AND ACCOUNTING

Graduates from finance and accounting degrees are in high demand, and are often offered a range of fast-paced job opportunities in every kind of industry. To boost your employability by studying a finance-based degree, choose this subject route.

MODULES

- Academic English Skills
- Business Management and Economics
- Financial Institutions and Market
- Introduction to Financial Accounting
- Introduction to Management Accounting
- Introduction to Mathematics for Finance and Accounting (IMFA)
- Introduction to Statistics for Finance and Accounting (IFSA)
- Principles of Finance

PROGRESSION DEGREES

BSc (Hons) Accounting and Finance

BSc (Hons) Banking and Digital Finance

BSc (Hons) Finance and Business

INTERNATIONAL RELATIONS AND INTERNATIONAL DEVELOPMENT

International relations and development careers centre around highly important areas of work and require well-rounded, educated graduates. For access to an exciting range of undergraduate degrees, this subject route will help you get where you want to be.

MODULES

- Academic English Skills
- Colonialism and its Legacy
- Development Issues
- Development of the Modern International System
- Enhanced Reading for International Relations and International Development
- Global Affairs
- Introduction to International Relations
- Key Thinkers in Development

PROGRESSION DEGREES

BA (Hons) International Development

BA (Hons) International Relations

BA (Hons) International Relations and Development



More information

For up-to-date lists of all International Year One progression degrees and module descriptions, please visit www.isc.sussex.ac.uk/our-courses/international-year-one



“The experience of the International Study Centre is unique, because you meet a lot of different nationalities there, which provides you with an understanding of diversity and multiculturalism. The teachers are very international and professional.”

Yolanda from China

Studied International Year One in International Relations and International Development
Progressed to BA (Hons) International Relations and Development

Pre-Masters

GENERAL ENTRY REQUIREMENTS

ACADEMIC

Recognised degree in related field or honours degree in any subject

ENGLISH LANGUAGE

One semester course:

Academic IELTS for UKVI 6.0 overall (minimum 6.0 in writing and 5.5 in all other bands) or equivalent

Two semester course:

Academic IELTS for UKVI 5.5 overall (minimum 5.5 in all other bands) or equivalent

Two and a half semester course:

Academic IELTS for UKVI 5.5 overall (minimum 5.0 in all skills) or equivalent

Three semester course:

Academic IELTS for UKVI 5.0 overall (minimum 5.0 in all skill) or equivalent

AGE

21 years of age, or older

COURSE FACTS

ENTRY DATES

One semester:

January or May

Two semester:

September or January

Two and a half semester:

August or November

Three semester:

June or September

LENGTH

One, two, two and a half or three semesters

STRUCTURE

A range of academic modules per semester, plus Critical Reading, Academic English Skills, CareerAhead and either Research Project or Research Skills

The two and a half and three semester Pre-Masters are subject to validation

WHY PRE-MASTERS

This advanced course aims to fully prepare you for studying a postgraduate degree, so that you can go on to achieve success at Sussex, in your professional career and in the world. During the programme you will choose which academic modules you will study. This gives you the flexibility to deepen your knowledge based on your career aims and study interests. During the Pre-Masters programme you also have the option to change your progression degree.

CHOOSE YOUR SUBJECT ROUTE

Business, Media and Social Sciences

Offering pathways in:

- Business, Management and Finance
- Film and Media
- Fintech
- Law, International Relations and Social Sciences

Science and Engineering

Offering pathways in:

- Computing and Engineering
- Life Sciences

WHAT YOU WILL LEARN

You will study a combination of core and subject-specific modules that focus on teaching you the English language, study skills, employability and academic areas most relevant to your chosen degree at Sussex.

YOUR ASSESSMENT

We will assess your progress regularly to ensure you are on track to complete your course successfully, so that you can go on to study your chosen degree at Sussex. You'll be assessed through many different activities, which may include exams, seminar discussions, group projects, presentations, essays, practical reports and software exercises, depending on your subject route.



More information
www.isc.sussex.ac.uk/our-courses/pre-masters

BUSINESS, MEDIA AND SOCIAL SCIENCES

Gain an insight into the core principles in Business, Management and Finance; Law, International Relations and Social Sciences; Film and Media; or Fintech. Throughout the course you will explore key concepts, develop research skills and learn to apply theory to each subject, to prepare you for Masters-level study at Sussex.

You can choose one of four pathways based on your intended progression degree:

- Business, Management and Finance
- Film and Media
- Fintech
- Law, International Relations and Social Sciences

Whichever pathway you choose, you'll study a combination of general and specialist modules to improve your knowledge and skills and prepare you for postgraduate study. You'll have the option to change your final progression degree but not your pathway.

CORE MODULES

- Academic English Skills
- CareerAhead
- Critical Reading
- Research Skills

ACADEMIC PATHWAY MODULES

Business, Management and Finance

- Business Environment
- Finance and Investment
- Management and Leadership
- Marketing and Human Resources Management

Film and Media

- Approaches to Film and Media
- Media and Critical Practice

Fintech*

- Data Analysis and Modelling
- Finance and Investment
- Mathematical and Statistical Methods

*Two, two and a half and three semesters only

Law, International Relations and Social Sciences

- Global Issues
- International Relations and International Development
- Key Concepts in Law and Criminology
- Key Concepts in Law and Politics



PROGRESSION DEGREES

MSc Banking and Finance
MA Digital Media
MA Education
MA Film Studies
MSc Fintech, Risk and Investment Analysis
MSc Human Resource Management
MSc International Management
MSc Management
MSc Management and Finance
MSc Marketing and Consumer Psychology



More information

For the full range of Pre-Masters progression degrees and module descriptions, please visit
www.isc.sussex.ac.uk/our-courses/pre-masters

SCIENCE AND ENGINEERING

Throughout the course you will explore key concepts and theory and learn how research skills can be applied in scientific enquiry, in order to prepare you for Masters-level study at Sussex. You will develop an understanding of the core principles underpinning either Computing and Engineering, or Life Sciences, alongside learning how to confidently use a wide range of tools, including mathematical and statistical techniques and to develop academic skills and conceptual knowledge relevant to your pathway.

You can choose one of two pathways based on the progression degree of your choice:

- Computing and Engineering
- Life Sciences



CORE MODULES

- Academic English Skills
- CareerAhead
- Critical Reading
- Research Skills

ACADEMIC MODULES

Computing and Engineering

- Applications in the Global Context
- Data Analysis and Modelling
- Design and Prototyping
- Mathematics for Computing and Engineering
- Programming and Systems Control

Life Sciences

- Life Sciences: The Cutting Edge
- Mathematical and Statistical Methods
- Raising Questions in Life Sciences
- Research Methods in Life Sciences
- The Scientific Practitioner

PROGRESSION DEGREES

MSc 5G Mobile Communications and Intelligent Embedded Systems
MSc Advanced Computer Science
MSc Advanced Electronic and Electrical Engineering
MSc Advanced Mechanical Engineering
MSc Artificial Intelligence and Adaptive Systems
MSc Cancer Cell Biology
MSc Computing with Digital Media
MRes Conservation Biology
MSc Engineering Business Management
MSc Genetic Manipulation and Molecular Cell Biology



More information

For the full range of Pre-Masters progression degrees and module descriptions, please visit www.isc.sussex.ac.uk/our-courses/pre-masters



“The International Study Centre enables me to study with many different nationalities, which is very interesting. If I had to describe the teaching here compared to my country, I would say that here it is more interactive and varied.”

Muzi from South Africa

Studied Pre-Masters in Business, Management and Finance

English language courses

IMPROVE YOUR ENGLISH

If you do not meet the English language requirements to study the International Foundation Year, International Year One, or Pre-Masters, you can improve your level of English by studying an English language course taught at the International Study Centre.

ENGLISH LANGUAGE PREPARATION

This one or two-semester course is designed for students who want to study the International Foundation Year or the International Year One course. The English Language Preparation course is taken before you start your academic studies at the International Study Centre.

ENTRY REQUIREMENTS

International Foundation Year

If you have IELTS 4.5 (with 4.0 in all skills) or equivalent, you need to study one semester of English Language Preparation. If you have IELTS 4.0 (with 3.5 in all skills) or equivalent, you need to study two semesters.

International Year One

If you have IELTS 5.0 or equivalent you need to study one semester. If you have IELTS 4.5 or equivalent, you need to study two semesters of English Language Preparation.

ENGLISH FOR PRE-MASTERS

This one or two-semester course is designed for students who want to study a Pre-Masters course. This course is taken before you start your academic studies at the International Study Centre.

ENTRY REQUIREMENTS

If you have IELTS 5.0 (with 5.0 in all skills) or equivalent, you need to study one semester of English for Pre-Masters. If you have IELTS 4.5 (with 4.5 in all skills) or equivalent, you need to study two semesters of English for Pre-Masters.

LANGUAGE LIFT

This six-week course is designed for students who need to raise the level of their written English. This course starts at the same time as your academic course, and runs concurrently with your studies.

ENTRY REQUIREMENTS

International Foundation Year

Academic IELTS for UKVI 5.0 overall (minimum 4.5 in writing).

International Year One

Academic IELTS for UKVI 5.5 overall (minimum 5.0 in writing) or equivalent.

Pre-Masters (one semester course)

Academic IELTS for UKVI 6.0 overall (minimum 5.5 in writing) or equivalent.



More information
www.sussex.ac.uk/isc

Support that matters

HERE TO HELP

We know that living and studying away from home can be challenging at times, which is why our student support staff at the International Study Centre are here to help. Whether you need advice about your course or you simply need to talk, we'll be there to support you so that you can enjoy your Sussex student experience to the full.

SUPPORT NETWORK

The University of Sussex has excellent support services, such as the Student Life Centre where you can get advice and guidance on issues such as accommodation, fees, disabilities, mental health and learning needs. Friendly and experienced support staff also run groups and workshops to help you with university life.

HEALTH SERVICES

There's a dentist, pharmacy and a health centre on campus, in case you ever feel unwell or need help with a health issue. You'll also have access to a drop-in centre in central Brighton where you can get medical treatment.

PLACES OF WORSHIP

Sussex supports students from a range of different cultures and backgrounds. The Meeting House is the on-campus chaplaincy that hosts services for a range of faiths and religions, including the Jewish community. There's also a Muslim Student Centre and Muslim prayer facility.



STUDENT INSURANCE

While studying in the UK you will need to have personal insurance. StudyCare Insurance Plus is an insurance policy that covers you for loss of personal possessions. It also gives you health and medical insurance for the duration of your studies at the International Study Centre.

DISABLED ACCESS

Sussex welcomes students of all abilities. The University has dedicated services and specialist staff who can provide information on a range of disabilities. Most of the academic buildings are accessible by wheelchair and you'll find disabled parking, tactile paving and handrails around the campus.



More information
www.sussex.ac.uk/studentlifecentre
www.sussex.ac.uk/equalities

Accommodation that feels like home

WELCOME HOME

Living in student accommodation is the best way to experience student life at Sussex. You'll make friends from around the world, have fun and learn to live independently within a supportive student community.

GET COMFORTABLE

We know that living away from home is a big step and that at first everything will seem new. Sussex provides accommodation for more than 5,000 students, so we know the best ways to help you get used to your surroundings. When you arrive you'll be able to take part in many activities that will help you settle in and meet other students.



ON CAMPUS ACCOMMODATION

You'll find a range of accommodation options that meet your needs and preferences, including self-contained flats, single-person units, five-bedroom houses and single study bedrooms with shared facilities.

On-campus accommodation benefits from:

- A great location; you'll live just a 10-minute walk away from the International Study Centre, academic buildings and campus facilities such as shops and restaurants
- Modern rooms furnished with a bed, desk and chair, bookshelf and a wardrobe; all rooms also have access to a shower, telephone and broadband access
- Fully equipped, shared kitchens where you can cook your own food; cooking is a great way to learn new skills and make new friends
- Surrounded by beautiful countryside and walking distance away from campus restaurants, shops and cafés.

All university accommodation is allocated based on availability. For up-to-date information on your options, please visit the International Study Centre website.

PRIVATE ACCOMMODATION

Brighton is a friendly city with a range of private accommodation available. If you want to rent privately, visit the International Study Centre website to help you research your options.



More information
www.sussex.ac.uk/isc/accommodation





34675_02.22

Join us on social media

 facebook.com/iscsussex

 [@sussexisc](https://www.instagram.com/sussexisc)

 youtube.com/user/ISCSussex

#MySussexStory



Apply

If you would like to apply to study at University of Sussex International Study Centre, you will need to complete an application form and submit the relevant documentation.

You can apply through your local education agent. Alternatively you can apply directly via our website and one of our dedicated Student Enrolment Advisors will be happy to provide support through every step of the application process.

Full information on how to apply, fees, entry requirements and more, visit isc.sussex.ac.uk/how-to-apply

Disclaimer

This guide is intended as a general guide for students considering entry to University of Sussex International Study Centre from 2022. University of Sussex International Study Centre is operated, and its courses offered, by Study Group Limited ("Study Group"). This guide forms no part of any contract between you and Study Group except as provided below. The guide is prepared in advance of the academic year to which it relates and Study Group makes every effort to ensure that the information contained here is accurate. Although reasonable steps are taken by Study Group to provide the courses and services described, Study Group cannot guarantee the provision of any course. Any course may be altered or withdrawn owing to circumstances beyond Study Group's reasonable control. Such circumstances include (but are not limited to) industrial action, lack of demand, departure of key personnel, change in government policy, withdrawal or reduction of funding, change of law or changes necessitated by the Corona virus pandemic. Study Group will take such steps as are available to it to minimise the effect of any alteration or withdrawal of a course and we will notify you of such alteration or withdrawal as soon as possible. Such steps may include the offer of a place on an alternative course. Please note that University of Sussex International Study Centre's website is the most up to date source of information regarding courses and facilities and we strongly recommend that you always visit the website before making any commitments. University of Sussex and its logo are registered Trade Marks of University of Sussex, Study Group and the Study Group logo are registered Trade Marks of Study Group. Unless otherwise stated, all material in this publication is copyright of Study Group. No part of this publication may be reproduced, stored in a retrieval system or transmitted in any form, or by any means, electronic, mechanical, photocopying, recording or otherwise, without the permission of Study Group.

Delivered by

