

# Self-Propelled Telescopic Booms

S<sup>®</sup>-60 XC<sup>™</sup>, S-65 XC, S-60 TraX<sup>™</sup> & S-65 TraX

## Specifications

Models	S-60 XC & S-60 TraX		S-65 XC & S-65 TraX	
Measurements	US	Metric	US	Metric
Working height maximum*	66 ft	20.29 m	71 ft	21.81 m
Platform height maximum	60 ft	18.29 m	65 ft	19.81 m
Horizontal reach maximum	48 ft 7 in	14.80 m	54 ft 2 in	16.51 m
Below ground reach	5 ft 5 in	1.65 m	8 ft 8 in	2.65 m
<b>A</b> Platform length - 8 ft model	3 ft	0.91 m	3 ft	0.91 m
Platform length - 6ft model	2 ft 6 in	0.76 m	2 ft 6 in	0.76 m
<b>B</b> Platform width - 8 ft model	8 ft	2.44 m	8 ft	2.44 m
Platform width - 6ft model	6 ft	1.83 m	6 ft	1.83 m
<b>C</b> Height - stowed (tires)	9 ft 2 in	2.80 m	9 ft 3 in	2.81 m
- stowed (TraX)	9 ft 2 in	2.80 m	9 ft 3 in	2.81 m
<b>D</b> Length - stowed (tires)	28 ft 7 in	8.71 m	32 ft	9.76 m
- stowed (TraX)	28 ft 7 in	8.71 m	32 ft	9.76 m
- stowed (jib tucked under)	-	-	25 ft 7 in	7.80 m
<b>E</b> Width (tires)	8 ft 2 in	2.49 m	8 ft 2 in	2.49 m
(TraX)	8 ft 5-11/16 in	2.58 m	8 ft 5-11/16 in	2.58 m
<b>F</b> Wheelbase	8 ft 2 in	2.49 m	8 ft 2 in	2.49 m
<b>G</b> Ground clearance - center (tires)	16.3 in	0.41 m	16.3 in	0.41 m
- center (TraX)	16.3 in	0.41 m	16.3 in	0.41 m

## Productivity

Maximum lift capacity - unrestricted	660 lb	300 kg	660 lb	300 kg
- restricted	1,000 lb	454 kg	1,000 lb	454 kg
Platform rotation	160°	160°	160°	160°
Vertical jib rotation - up/down	-	-	133° (+ 79° / -54°)	
Turntable rotation	360° continuous		360° continuous	
Turntable tailswing	4 ft 7.5 in	1.41 m	4 ft 7.5 in	1.41 m
Drive speed - stowed (tires)	3.0 mph	4.8 km/h	3.0 mph	4.8 km/h
- stowed (TraX)	2.3 mph	3.7 km/h	2.3 mph	3.7 km/h
- raised/extended (tires)	1 ft/s	0.3 m/s	1 ft/s	0.3 m/s
- raised/extended (TraX)	0.7 ft/s	0.2 m/s	0.7 ft/s	0.2 m/s
Gradeability - stowed**	45%		45%	
Turning radius - inside (tires)	7 ft 9 in	2.40 m	7 ft 9 in	2.40 m
- inside (TraX)	11 ft 5 in	3.48 m	11 ft 5 in	3.48 m
Turning radius - outside (tires)	18 ft 2 in	5.50 m	18 ft 2 in	5.50 m
- outside (TraX)	21 ft 4 in	6.50 m	21 ft 4 in	6.50 m
Controls	12 V DC proportional	12 V DC proportional		
Tires - RT foam filled	355/55D 625		355/55D 625	
TraX - Track system	Vermeer Track System		Vermeer Track System	
Ground pressure - tires	90 psi	620 kPa	90 psi	620 kPa
Ground pressure - TraX	23 psi	158 kPa	23 psi	158 kPa

## Power

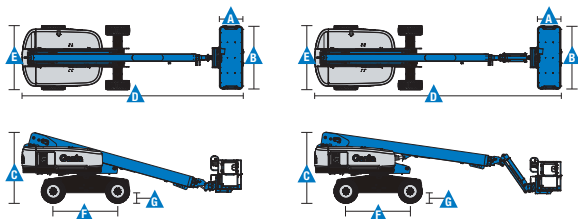
Power source (tires)	48 hp (35.79 kW) Deutz diesel T4f D2.9L4		48 hp (35.79 kW) Deutz diesel T4i D2011L03i	
	49 hp (36.54 kW) Perkins turbo diesel T4f 404F-E22T		51 hp (38kW) Perkins Diesel 404D-22	
	74 hp (55.18 kW) Deutz turbo diesel T4i D2011L04i		74 hp, Deutz Turbo Diesel T4f TD2.9L4	
	60 hp (44.74 kW) Ford gas/LPG MSG425			
Auxiliary power unit	12 V DC		12 V DC	
Hydraulic tank capacity	40 gal	151 L	40 gal	151 L
Fuel tank capacity - diesel	35 gal	132 L	35 gal	132 L
- gas	30 gal	114 L	30 gal	114 L

## Weight\*\*\*

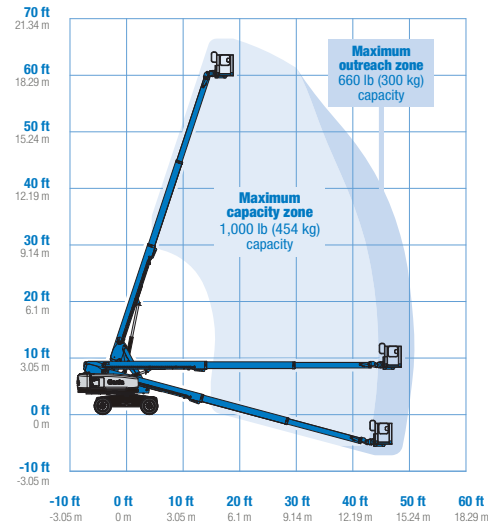
Tires	22,930 lb	10,401 kg	25,160 lb	11,412 kg
Trax	26,840 lb	12,174 kg	29,000 lb	13,154 kg

## Standards Compliance

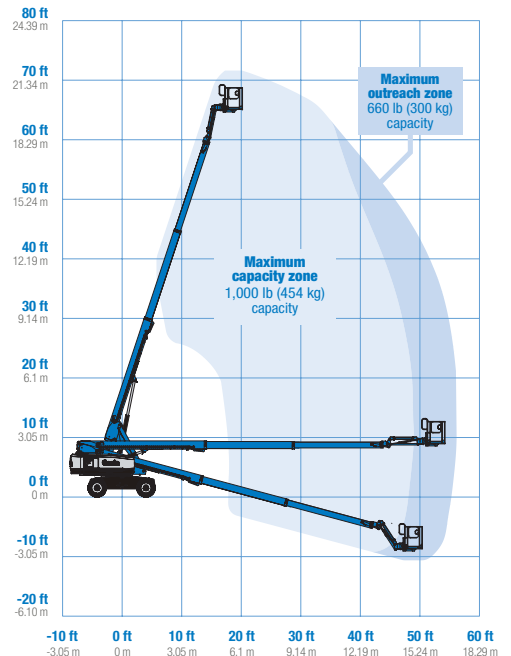
ANSI/SAIA A92.20, CSA B354.7, GB 25849, EN 280, AS/NZS 1418.10



## Range Of Motion S-60 XC & S-60 TraX



## Range Of Motion S-65 XC & S-65 TraX



\* The metric equivalent of working height adds 2 m to platform height. U.S. adds 6 ft to platform height.

\*\* Gradeability applies to driving on slopes, see operator's manual for details regarding slope ratings.

\*\*\* Weight will vary depending on slope, see operator's manual for details regarding slope ratings.

### Features

#### Standard Features

##### Measurements

##### S-60 XC & S-60 TraX

- 66 ft (20.29 m) working height
- 48 ft 7 in (14.80 m) horizontal reach
- 660 lb (300 kg) unrestricted and 1,000 lb (454 kg) restricted lift capacity

##### S-65 XC & S-65 TraX

- 71 ft (21.81 m) working height
- 54 ft 2 in (16.51 m) horizontal reach
- 660 lb (300 kg) unrestricted and 1,000 lb (454 kg) restricted lift capacity

##### Productivity

- Self-leveling platform
- 160° hydraulic platform rotation
- Proportional joystick controls
- Fuel select switch on platform and ground control panels (Gas/LPG models)
- Active oscillation
- Flashing beacon and travel alarm
- Drive enable
- AC power cord to platform
- Horn
- Hour meter
- Tilt alarm
- Descent alarm
- 360° continuous turntable rotation
- Positive traction drive
- Two speed wheel motors
- Platform Load sense system
- Entry Toeboard
- Hydraulic oil cooler
- Alarm package
- Work tray
- Lift Guard<sup>™</sup> Contact Alarm

##### Power

- 12 V DC auxiliary power
- Anti-restart engine protection
- Auto engine fault shutdown
- Swing out engine tray
- Engine gauge package

##### Drive Options

- 4WD
- Intake air heater (Deutz engine)

#### Easily Configured To Meet Your Needs

##### Platform Options

- Steel 8 ft (2.44 m) tri entry with side swing gate (standard)
- Steel 6 ft (1.83 m) dual entry with side swing gate

##### Jib Options

- Non-jib (S-60 only)
- 5 ft (1.52 m) jib boom (S-65 only)

##### Engine Options

- 48 hp (35.79 kW) Deutz diesel T4f D2.9L4
- 48 hp (35.79 kW) Deutz diesel T4i D2011L03i
- 49 hp (36.54 kW) Perkins turbo diesel T4f 404F-E22T
- 51 hp (38kW) Perkins Diesel 404D-22
- 74 hp (55.18 kW) Deutz turbo diesel T4i D2011L04i
- 74 hp, Deutz Turbo Diesel T4f TD2.9L4
- 60 hp (44.74 kW) Ford gas/LPG MSG425

##### Tire Options

- Rough terrain foam-filled (standard)
- Rough terrain non-marking foam-filled
- Trax (Vermeer track system)



#### Options & Accessories

##### Productivity Options

- Lift Guard Platform Mesh - Half
- Lift Guard Platform Mesh - Full
- Lift Guard Platform Mesh - Screen (8ft platform only)
- Platform top auxiliary rail
- Lift Power<sup>™</sup>
  - 3 kW AC Generator
  - 12 kW 240 V / 60 Hz Welder Ready package
  - 7kw Welder Ready package
  - 12 kW Welder Equipped, Select Lincoln or Miller (12 kW options include a fire extinguisher and fireproof sleeves)
- Air line to platform
- Specialty hydraulic oil (cold weather, fire resistant, or biodegradable)
- Hostile environment kit
- Deluxe hostile environment kit
- Aircraft protection package (6 ft platform)
- Thumb rocker steer
- Panel cradle package
- Lockable platform control box covers
- Second battery
- Tow package
- Work lights package (2 on chassis, 2 on platform)
- Operator Protective Structure<sup>\*\*\*\*\*</sup>
- Fall Arrest Bar

##### Power Options

- Engine gauge package<sup>\*\*\*</sup>
- Cold Weather Packages
- Diesel scrubber/muffler (catalytic muffler)<sup>\*\*\*\*</sup>
- LPG tank 33.5 lb (15.19 kg) capacity
- Intake air pre-cleaner<sup>\*\*\*</sup>
- Positive air shutoff system (Deutz engine only)

\* Also available as Tier 4i in limited regions  
 \*\* Available only with Track system option  
 \*\*\* Available only with Ford engine  
 \*\*\*\* Available only with Tier 4i diesel engines  
 \*\*\*\*\* Available through aftermarket parts only

#### Genie United States

6464 185th Ave. NE  
 Redmond, WA 98052  
 Telephone +1 (425) 881-1800  
 Toll Free in USA/Canada +1 (800)-536-1800  
 Fax +1 (425) 883-3475

#### Distributed By: