

# IMPACT

---

## FAQs



Updated May 2025

## SECTION 1: GENERAL FAQs ABOUT IMPACT

IMPACT, Sucafina's responsible sourcing program, was launched in 2022 to create fairer, more resilient coffee supply chains. IMPACT helps our partners to achieve their sustainability goals while working together to drive sustainable growth for farmers and roasters.

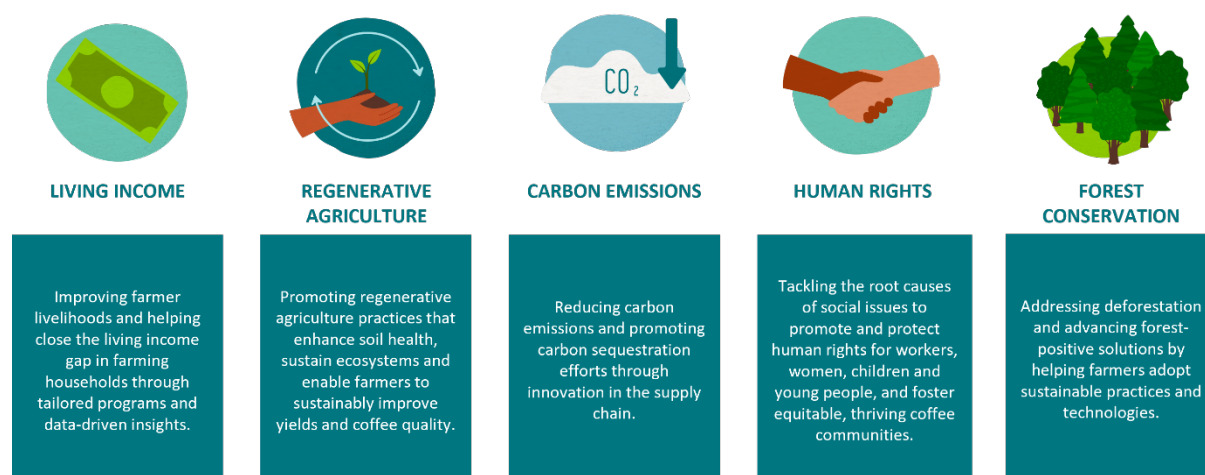
### 1. What is IMPACT?

IMPACT is Sucafina's responsible sourcing program and one of the most important tools in delivering Sucafina's long-term purpose of creating opportunities to improve lives across the coffee supply chain.

IMPACT supports farmers in their efforts to achieve wellbeing and profitability for their families and communities. This includes helping farmers to face oncoming challenges such as climate change, lack of access to resources and training and continued access to markets for their coffees.

For roasters, IMPACT means assurance that coffees you buy are reliable, traceable and compliant with regulatory requirements. IMPACT purchases create the foundations for partnerships that will engender sustainable, equitable and durable supply chains.

#### IMPACT is built around 5 Goals:



### 2. What is the difference between IMPACT Verified and IMPACT Beyond? What benefits come with each path?

**IMPACT Verified** coffees are responsibly sourced, traceable coffees that meet regulatory requirements and offer third-party assurance of compliance and transparency through a set of social, environmental and economic sustainability standards developed in alignment with the Global Coffee Platform.

#### IMPACT Verified:

- Offers reliable, traceable coffees that can be claimed as responsibly sourced.
- Meets regulatory compliance, including EUDR.
- Mitigates supply chain risks.
- Provides third-party assurance and transparency.
- Comes with an IMPACT Transaction Certificate for every sale (on request) and an IMPACT Verified & Improvement Report.

Building on a foundation of responsible sourcing, **IMPACT Beyond** coffees go further by identifying opportunities for measurable, long-term change across the 5 IMPACT Goal areas: living income, regenerative agriculture, carbon emissions, human rights and forest conservation. As a result, these coffees can be described as ‘sustainably sourced’.

**IMPACT Beyond ensures:**

- Opportunities for transformative supply chain partnerships
- Data-driven insights to guide investment.
- Co-creation and implementation of transformative projects.
- Case studies, reports to showcase progress and assistance with marketing materials.

Roaster involvement means that farmers can begin to implement sustainable practices on their farms with the assurance that the effort is acknowledged and valued by their supply chain partners.



### 3. Has IMPACT received any external verification or assurance?

IMPACT Verified is based on the [Coffee Sustainability Reference Code](#) (Coffee SR Code) and has been recognized by the [Global Coffee Platform](#) as Coffee SR Code equivalent, 2nd party assurance. This recognition provides confidence that IMPACT Verified coffee is produced and processed in accordance with global environmental, social and economic sustainability standards.

To obtain IMPACT Verified status, farms and facilities are assessed based on compliance with a set of supply chain practices, or indicators, aligned with the Global Coffee Platform. IMPACT Verified groups of producers undergo external independent third-party audits every three years.

#### **4. What is the difference between IMPACT and other green coffee sustainability initiatives and certifications?**

Many existing certifications focus on compliance alone: they guarantee minimum standards of social, environmental and economic sustainability. IMPACT goes further.

Sucafina's IMPACT Program is built around and prioritizes continuous improvement in farming practices connected to the 5 IMPACT Goals. The program is data-driven: Sucafina collects and uses data to tailor projects at farm level, channel investment and transparently report on progress to downstream partners.

The aim of IMPACT is not to displace existing standards but to serve our partners' needs in the face of growing demand for responsibly sourced coffee.

#### **5. What benefits do coffee producing communities see because of participating in IMPACT?**

The benefits of IMPACT verification for coffee farming communities are significant and may vary depending on location and partnership arrangements. In most cases they will include:

- Improved global access to markets for responsibly and sustainably sourced coffee.
- Training and support in achieving sustainability objectives based on priority improvement areas (determined through data collection and community consultation).
- Opportunities to develop long-term supply chain partnerships with roasters.
- Opportunities to benefit from investments in transformative projects beyond compliance and responsible sourcing.

#### **6. Will farmers receive a premium?**

Farmers will benefit from being part of IMPACT-verified supply chains. Because IMPACT promises to continuously improve work on improving the 5 key areas of sustainability, and because each origin is different and has different needs, we think it makes sense for local supply chain managers to determine, in partnership with farmers, how premiums are invested.

Premiums can be paid either in-kind or cash; this is up to the discretion of the local supply chain managers.

## SECTION 2: WHAT IMPACT PRODUCTS ARE AVAILABLE (AND WHAT DO I GET WHEN I BUY THEM)?

### 7. How does IMPACT help me comply with EUDR or other compliance-based programs?

All IMPACT-verified coffees are compliant with the European Union Deforestation Regulation (EUDR) requirements. Purchases can help you meet the minimum EUDR requirements for your EU imports.

### 8. What is the pricing structure? How much does it cost?

The premium paid for IMPACT Verified coffee is used by Sucafina to guarantee the integrity, structure and independence of the program. The premium also supports Sucafina in delivering support and trainings to farmers on an annual basis to maintain adherence to the critical performance indicators and to demonstrate progress on the improvement indicators.

Premiums will vary depending on the origin, with an eye towards remaining competitive with existing certifications to help our clients to scale up and systematize the adoption of responsible procurement practices in their businesses long-term.

Please enquire with your usual contact at Sucafina to learn more about pricing.

### 9. Can I use the IMPACT logo on packaging? Can I use the IMPACT logo on media channels or other digital formats?

Because of GCP requirements and our commitment to ensuring that all sustainability claims are verifiable and upheld, Sucafina does not permit the 3<sup>rd</sup> party use of the IMPACT logo on packaging of any sort, nor do we allow digital format use. Roasters are allowed to use the claim of 'responsibly sourced' coffee when purchasing IMPACT Verified.

We would be delighted to help you market your participation in other ways. Please [get in touch!](#)

### 10. Which origins currently supply IMPACT Verified coffees? How do I source IMPACT Verified coffee or partner for Beyond?

IMPACT-verified coffees are now available from 16 origins, and more are on the way. Roasters who are interested in purchasing IMPACT-verified coffee should contact their trader to learn more.

