

DONOR TYPING QUALITY

BENEFIT

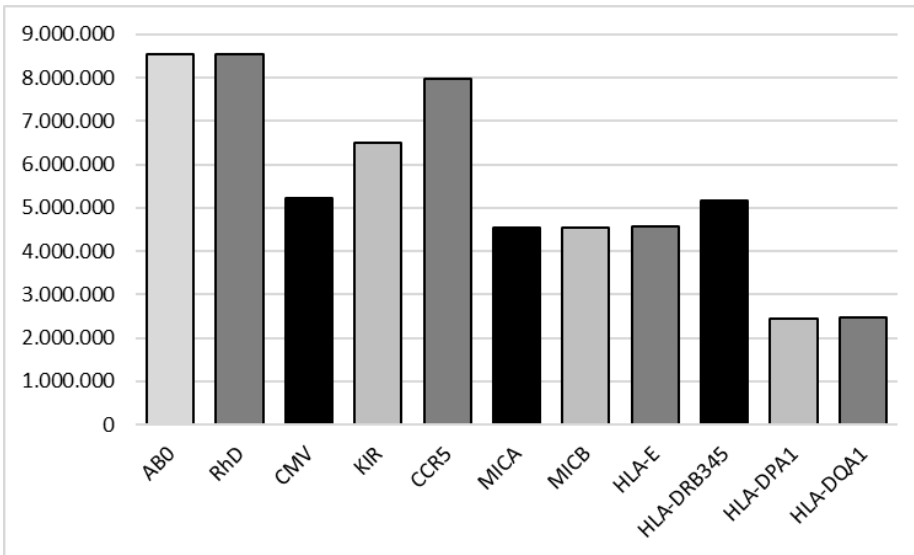
Quickly identifying a matching donor saves time

FEATURES

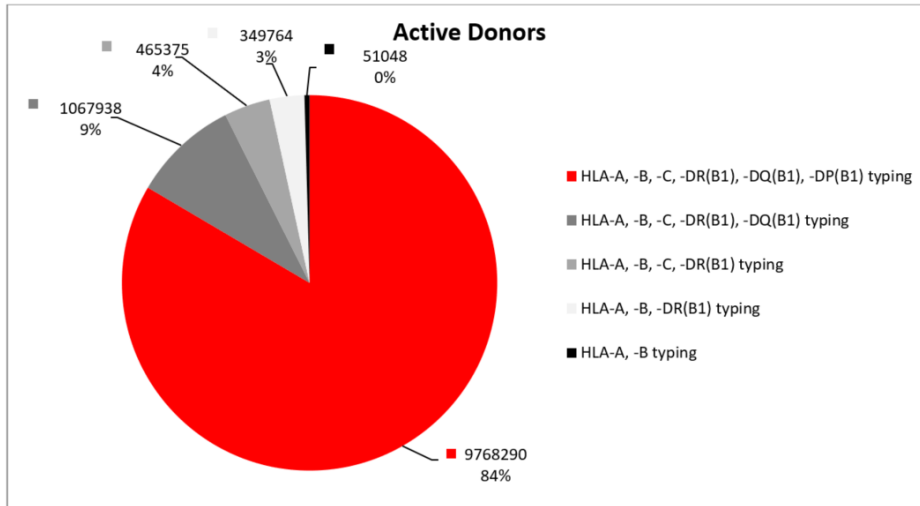
DKMS strives to maintain a high standard of quality in HLA data. All newly registered donors are typed in HLA-A, -B, -C, -DRB1, -DQB1, -DPB1, -DRB 3/4/5, -DPA1, -DQA1, CCR5, ABO, RhD, CMV, and are analysed for CMV status.

RESULTS

Additional markers DKMS Donors*



Data quality - DKMS global*



DKMS
Transplant Center Services
Kressbach 1
72072 Tübingen

T +49 70 71 94 3-0
tcs@dkms.de

*as of January 2nd 2023
basis: 11.7m active donors