

DONOR TYPING QUALITY

BENEFIT

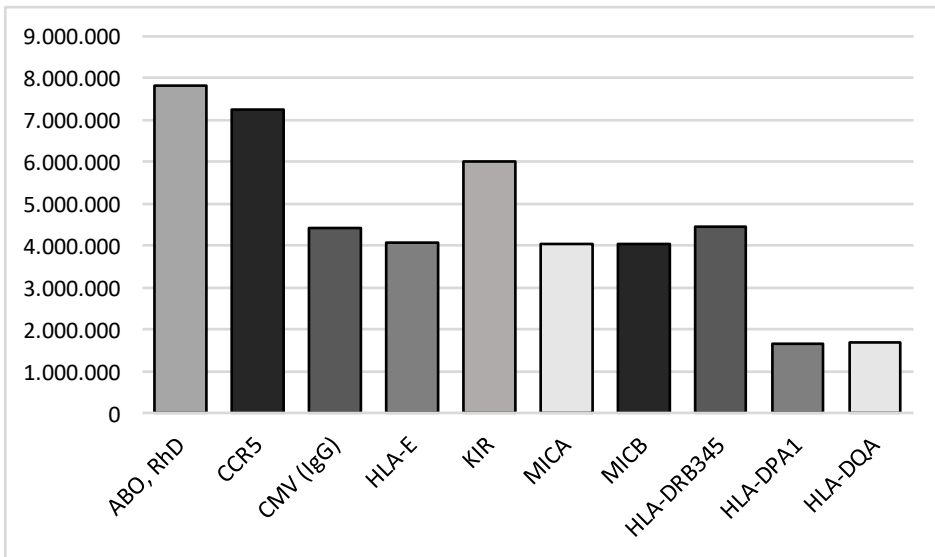
Quickly identifying a matching donor saves time

FEATURES

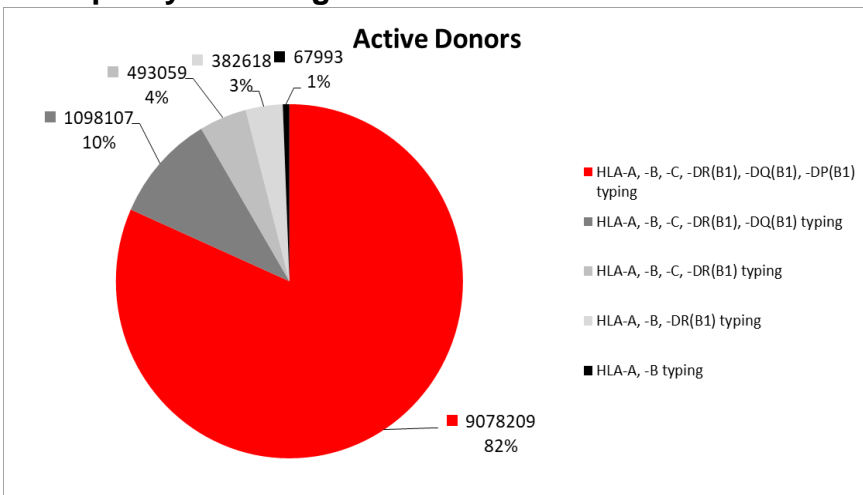
DKMS strives to maintain a high standard of quality in HLA data. All newly registered donors are typed in HLA-A, -B,-C, -DRB1, -DQB1, -DPB1, -E, -DRB 3/4/5, -DPA1, -DQA1, KIR, CCR5, ABO, Rh D, CMV, MIC-A and MIC-B.

RESULTS

Additional markers DKMS Donors*



Data quality - DKMS global*



*as of October 19th, 2021

DKMS
Transplant Center Services
Kressbach 1
72072 Tübingen

T +49 70 71 94 3-0
tcs@dkms.de