



BASF Antwerp

Demineralised and process water for the largest chemical plant in Belgium

Client

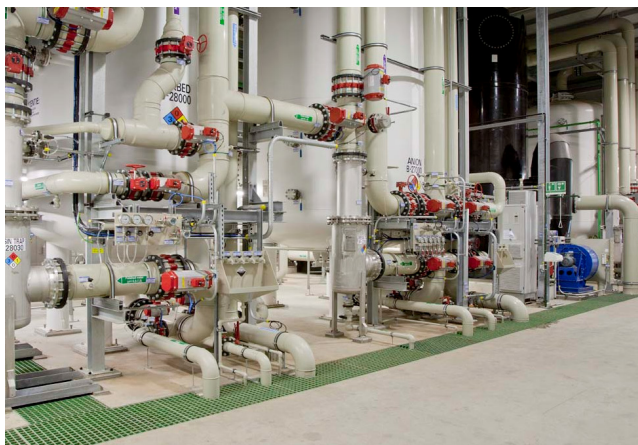


BASF is a world leader in the chemical industry, combining economic success with environmental protection and social responsibility. The site of BASF in Antwerp is located in the most northern part of the port of Antwerp. It is the largest chemical production centre in Belgium and the second most important production site of the BASF group worldwide. The site contains fifty production facilities. The BASF Antwerp product range comprises base and speciality chemicals, synthetics and primary products, refining products and inorganic chemicals.



Case

The BASF Antwerp is a 'Verbund' site which, by interlinking the production plants, energy flows and infrastructure, reduces raw materials, energy consumption, and emissions, while exploiting synergies. As part of its efficient use of resources, BASF started an initiative to optimize the water footprint. As well as expanding of the demin water production, BASF wanted to minimize the consumption of groundwater. In a global tendering process, Evides Industriewater was the successful bidder best able to meet the high standards for the demin water production, while reducing the consumption of groundwater.



Solution

Over a period of nearly 50 years, Evides Industriewater has developed the competences and knowhow in the treatment of surface water for the production of industrial water. Applying this knowledge, Evides Industriewater has been able to replace nearly all groundwater by surface water as input for the production of process water.

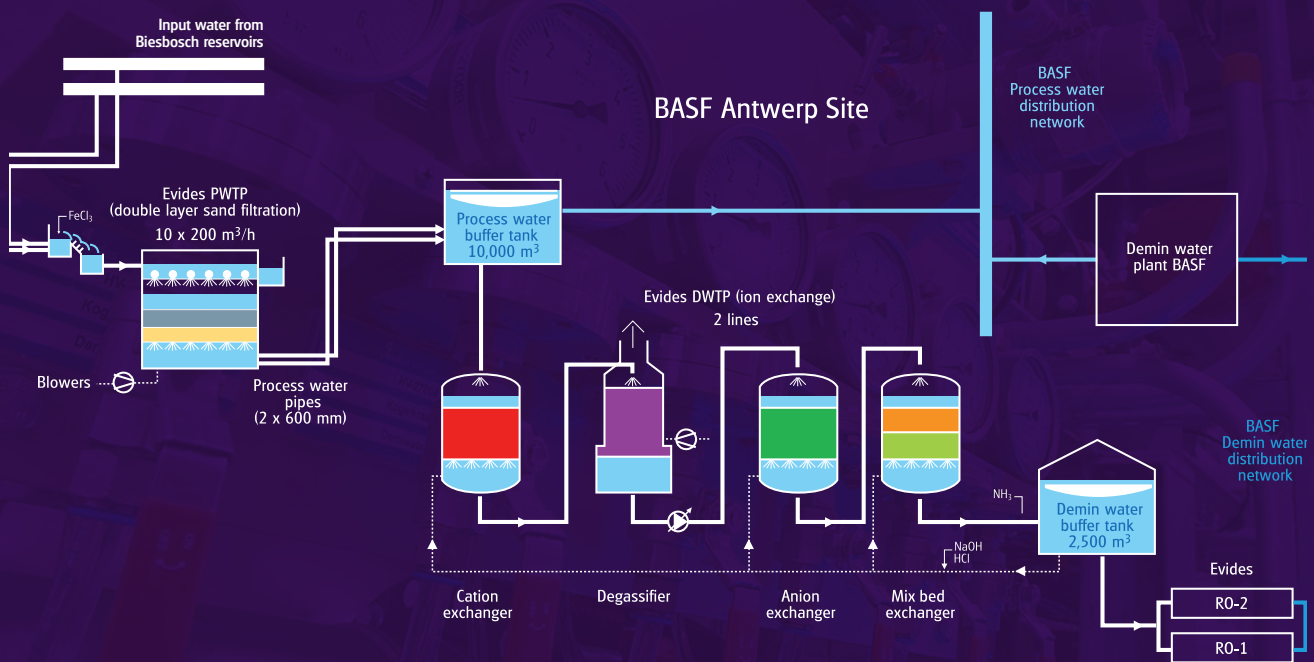
Under a long term DBFO contract, Evides Industriewater is the partner of choice by:

- financing the investment;
- designing and building a state of the art water plant for process (2,000 m³/h), demin (550 m³/h), and ultra-pure (600 m³/h) water;
- handling the day-to-day operation and maintenance.

Features

Start of operation	2011
Products	Process and (polished) demin water
Source	Pre treated surface water
Max. capacity	Process water plant 2,000 m ³ /h Demin water plant 550 m ³ /h Ultrapure water (RO) 600 m ³ /h
Technology	MMF – IX - RO
Redundancy	N-2
Conductivity	< 0,1 µS/cm
Total Organic Carbon	< 50 ppb

Process flow diagram of BASF Antwerp



Your innovative water partner

As part of Evides, the Dutch drinking water company, Evides Industriewater has been a reliable and inventive water partner for the industrial sector for nearly 50 years. Evides Industriewater supplies nearly 150 million m³ of process water each year (of which 20 million m³ via re-use solutions) and treats a similar quantity of waste water.

These services are provided via almost 90 facilities, which are built, owned and operated by Evides Industriewater throughout Northwestern Europe.