



Meadow View




A small collection of 2 & 3 bedroom homes


Homes in the heart of Hampshire

Located just North of Romsey, Meadow View is a new development of stylish homes set next to Abbotswood Nature Reserve.

Living in Romsey sets you up for the perfect balance between country and city living, both being easily reached in just a few minutes.



-  **The Hillier**
-  **The Abbey**
-  **Parking spaces**

 **Meadow View**
Treviglio Close,
Romsey,
Hampshire,
SO51 7AG

North





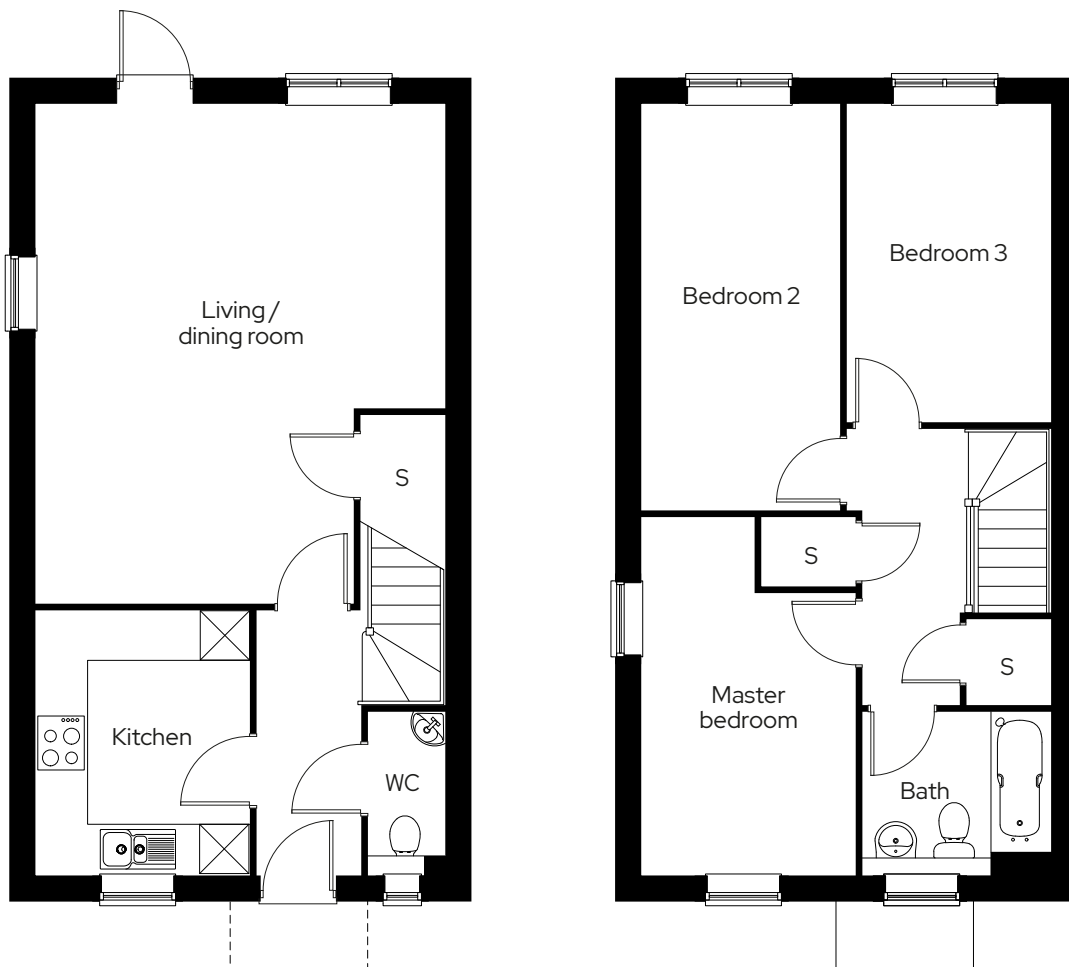
The Hillier

3 bedroom semi detached
Plot 12, 17, 18*, 19

3  1  2 

Room

Kitchen	3.2m x 4.9m
Living/dining room	6.0m x 4.9m
Master bedroom	3.4m x 2.6m
Bedroom 2	4.9m x 2.6m
Bedroom 3	3.8m x 2.3m



* Mirrored plot S Storage

We operate a policy of continuous product development and individual features such as windows and elevational treatments may vary. Consequently, particulars contained within this document should be treated as general guidance only. They do not constitute a contract, part of a contract or a warranty. Computer generated images and photographs are for illustration purposes only and may not accurately depict individual plots. Dimensions provided are for general guidance and are not intended to be used for carpet sizes, appliances, spaces or items of furniture.

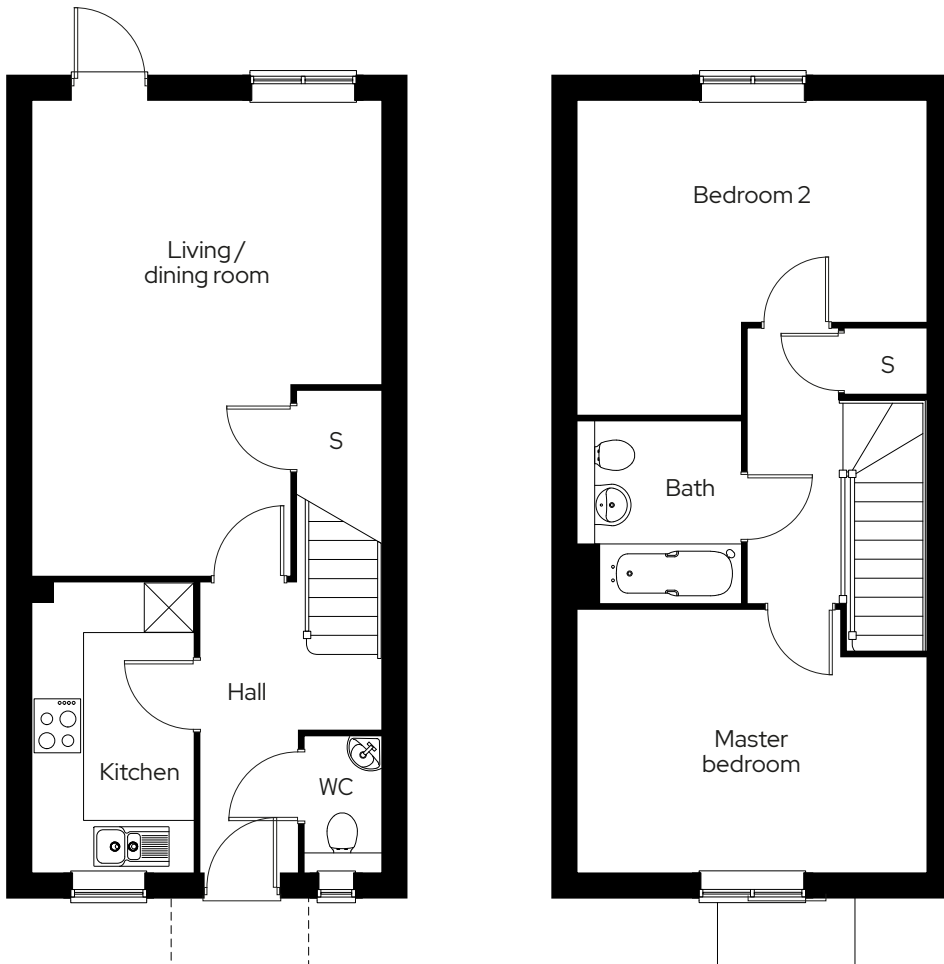
The Abbey

2 bedroom terraced
Plot 10,11*, 20, 21, 22*

2  1  2 

Room

Kitchen	3.5m x 1.9m
Living/dining room	5.7m x 4.2m
Master bedroom	4.2m x 3.2m
Bedroom 2	4.2m x 3.8m



* Mirrored plot S Storage

We operate a policy of continuous product development and individual features such as windows and elevational treatments may vary. Consequently, particulars contained within this document should be treated as general guidance only. They do not constitute a contract, part of a contract or a warranty. Computer generated images and photographs are for illustration purposes only and may not accurately depict individual plots. Dimensions provided are for general guidance and are not intended to be used for carpet sizes, appliances, spaces or items of furniture.

Sovereign has an established reputation as one of the south's leading shared ownership and market rent providers and has already helped to find new homes for over 4,000 people.

With 20 years' experience of developing home ownership solutions, Sovereign is dedicated to providing, quality, affordable housing in neighbourhoods where people want to live.

Get in touch

0300 330 0718

To find out more about shared ownership and the homes we offer, get in touch today.

→ sovereignliving.org.uk

Head office

Sovereign House
Basing View
Basingstoke
RG21 4FA