



Reed Gardens

A collection of new 2 bedroom homes

An exciting new development

A collection of 2 bedroom semi-detached homes available with shared ownership in the desirable location of Woolhampton, Berkshire.

These stylish homes each come complete with a downstairs cloakroom, modern fitted kitchen with built-in oven, hob and extractor, and an open plan living/dining room. Also benefiting from a stylish bathroom suite with a bath, private enclosed rear garden laid to lawn and 2 allocated parking spaces.

Located in the heart of Berkshire, this charming village benefits from beautiful surroundings, local amenities and excellent transport links with its own railway station nearby.



 **Reed Gardens,**
Woolhampton,
Reading,
Berkshire,
RG7 5FT

North



-  **The Basildon**
-  **Parking spaces**





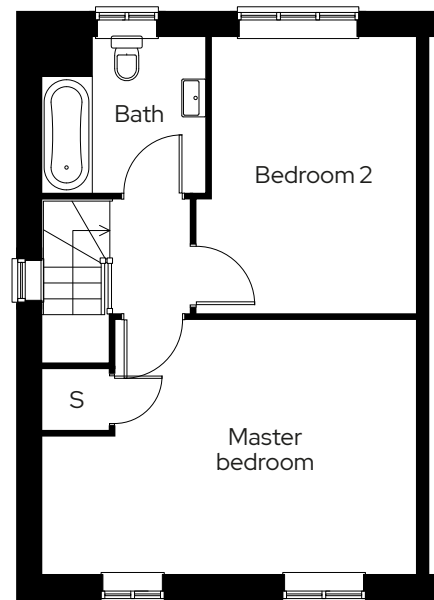
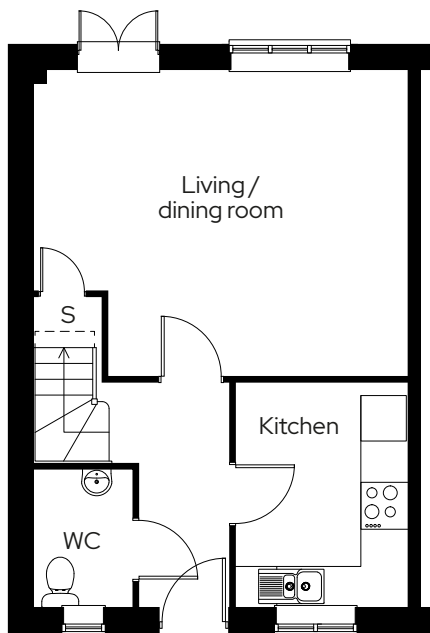
The Basildon

2 bedroom semi-detached
Plots 7, 8*

2  1  2 

Room

| | |
|--------------------|-------------|
| Living/dining room | 5.4m x 4.4m |
| Kitchen | 2.5m x 3.3m |
| Master bedroom | 5.4m x 3.7m |
| Bedroom 2 | 2.9m x 4.0m |



* Mirrored plot S Storage

We operate a policy of continuous product development and individual features such as windows and elevational treatments may vary. Consequently, particulars contained within this document should be treated as general guidance only. They do not constitute a contract, part of a contract or a warranty. Computer generated images and photographs are for illustration purposes only and may not accurately depict individual plots. Dimensions provided are for general guidance and are not intended to be used for carpet sizes, appliances, spaces or items of furniture.



As one of the UK's leading shared ownership providers, Sovereign is passionate about giving everyone the opportunity to own their own home.

Our highly dedicated sales team has already helped thousands of people step onto the property ladder and our profit with a purpose principle means we can continue to help thousands more. Established, experienced, and affordable, we are proud to help more people live where they love.

Get in touch

0300 330 0718

To find out more about shared ownership and the homes we offer, get in touch today.

→ sovereignliving.org.uk

Head office

Sovereign House
Basing View
Basingstoke
RG21 4FA