



Modern family homes available in a sought after village location



## Shalfleet Meadows

The Shalfleet

Burt Close, Shalfleet,  
Isle of Wight PO30 4DW



Image shows Plots 8 & 9, other Plots may vary.

Call **0300 330 0718**  
Visit **[sovereignliving.org.uk](https://sovereignliving.org.uk)**

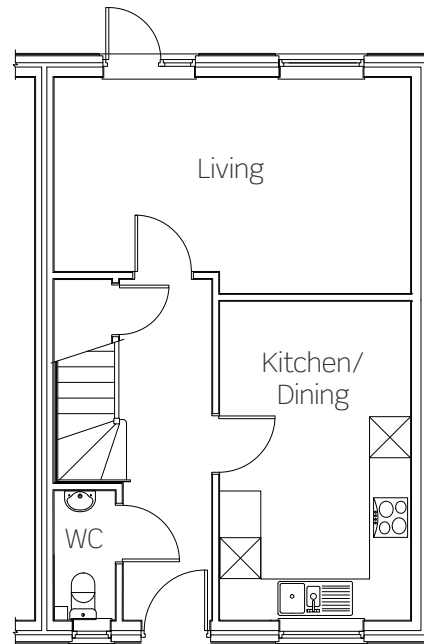
## Shalfleet Meadows The Shalfleet

Placed in a picturesque village setting, Shalfleet Meadows is ideally situated in a beautiful rural location. You'll also be close by to Yarmouth with its ferry links to the mainland, and Newport with a vibrant choice of amenities.

### Plots 8, 9, 12, 13 & 14

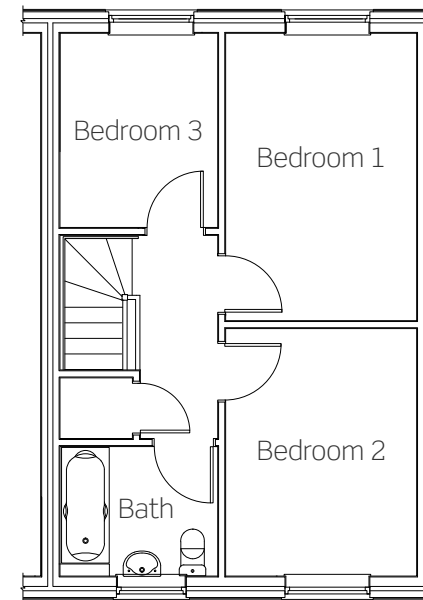
These new homes benefit from:

- Modern kitchen/diner layout
- Spacious lounge with access leading out onto private enclosed garden
- Ground floor cloakroom/WC
- Stylish bathroom suite
- Driveway parking



#### Ground floor

Kitchen/Dining	2832mm x 4710mm
Living	5270mm x 3200mm



#### First floor

Bedroom one	2832 x 4247mm
Bedroom two	2832 x 3662mm
Bedroom three	2347 x 3421mm

Plots 8 & 13 have a mirrored layout.  
All dimensions are maximum.



A rare opportunity to purchase a two bedroom bungalow with shared ownership



# Shalfleet Meadows

The Caul

Burt Close, Shalfleet,  
Isle of Wight PO30 4DW



Call **0300 330 0718**  
Visit **[sovereignliving.org.uk](https://sovereignliving.org.uk)**

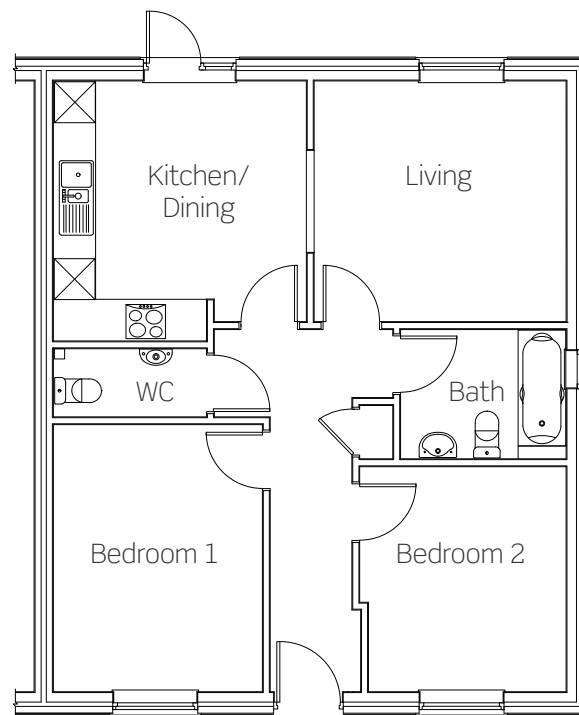
## Shalfleet Meadows The Caul

Placed in a picturesque village setting, Shalfleet Meadows is ideally situated in a beautiful rural location. You'll also be close by to Yarmouth with its ferry links to the mainland, and Newport with a vibrant choice of amenities.

### Plots 22, 23 & 24

These new homes benefit from:

- Spacious kitchen/diner with access leading out onto private enclosed garden
- Two double bedrooms
- Modern fitted bathroom along with separate cloakroom/WC
- Driveway parking



### Dimensions

Kitchen/Dining	4628mm x 3563mm
Living	4628mm x 3846mm
Bedroom one	3099mm x 3950mm
Bedroom two	2929mm x 3333mm




Plot 23 has a mirrored layout.  
All dimensions are maximum.



# Shalfleet Meadows

Burt Close, Shalfleet,  
Isle of Wight  
PO30 4DW

Call **0300 330 0718**  
Visit **[sovereignliving.org.uk](https://sovereignliving.org.uk)**

-  Plots 3, 4 & 5  
The Warland  
2 bedroom house
-  Plots 8, 9, 12, 13 & 14  
The Shalfleet  
3 bedroom house
-  Plots 22, 23 & 24  
The Caul  
2 bedroom bungalow



## Price list & availability

Plot	Property details	Price	40% share	Monthly rent	Monthly service charge	Availability
14	3 Bedroom Semi- Detached House	£220,000	£88,000	£275.00	£29.35	December 2020
24	2 Bedroom Bungalow	£215,000	£86,000	£268.75	£29.35	December 2020

Shalfleet Meadows,  
Shalfleet

0300 330 0718  
newbuildso@sovereign.org.uk