



Contemporary three bedroom homes situated in the charming town of Shaftesbury, Dorset



# Blackmore Down

The Shaftesbury

Border Close,  
Shaftesbury SP7 8TS



Image shows from right to left Plots 26-29,  
other Plots and external finishes may vary.

Call **0300 330 0718**  
Visit **[sovereignliving.org.uk](https://sovereignliving.org.uk)**

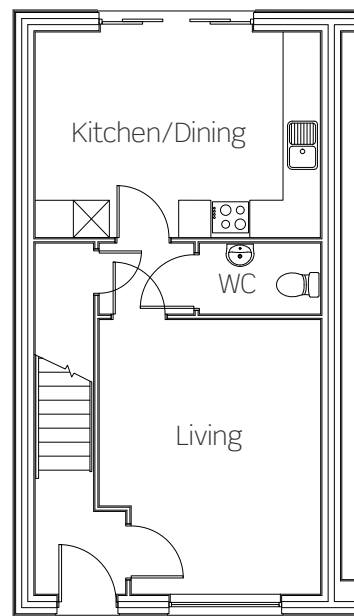
## Blackmore Down The Shaftesbury

Set on the edge of the pretty town of Shaftesbury in Dorset, midway between Salisbury and Yeovil, Blackmore Down has so much to offer, including good quality schools, excellent shopping and fantastic shops all within easy reach.

### Plots 10, 12, 13, 26, 28 & 29

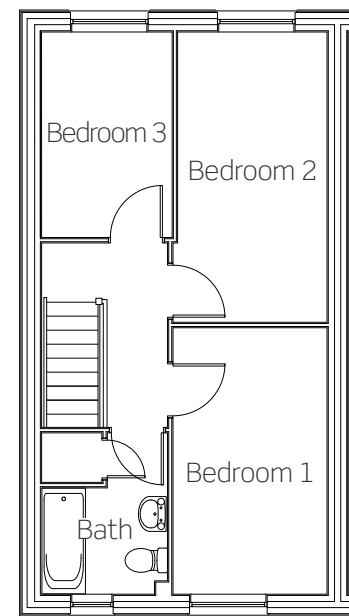
These new homes benefit from:

- Modern open-plan kitchen/ diner layout
- Carpets & flooring provided throughout
- Ground floor cloakroom
- Stylish bathroom suite
- Private enclosed garden laid to lawn
- Allocated parking



#### Ground floor

Kitchen/Dining	4580mm x 3300mm
Living	4410mm x 3560mm



#### First floor

Bedroom one	2470mm x 4280mm
Bedroom two	2400mm x 4660mm
Bedroom three	2100mm x 3300mm

Plots 10 & 26 have a mirrored layout.  
All dimensions are maximum.



Contemporary three bedroom homes situated in the charming town of Shaftesbury, Dorset



## Blackmore Down

The Gillingham

Border Close,  
Shaftesbury SP7 8TS



Image shows from right to left Plots 26-29,  
other Plots and external finishes may vary.

Call **0300 330 0718**  
Visit **[sovereignliving.org.uk](https://sovereignliving.org.uk)**



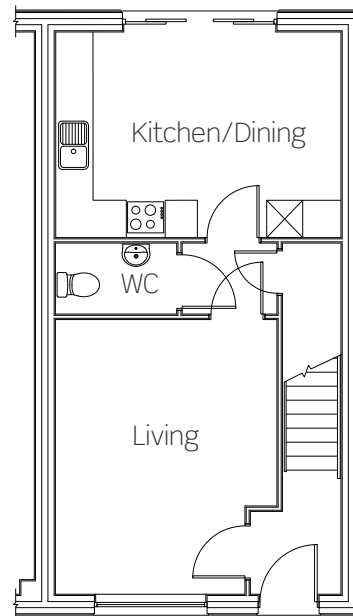
## Blackmore Down The Gillingham

Set on the edge of the pretty town of Shaftesbury in Dorset, midway between Salisbury and Yeovil, Blackmore Down has so much to offer, including good quality schools, excellent shopping and fantastic shops all within easy reach.

### Plots 11 & 27

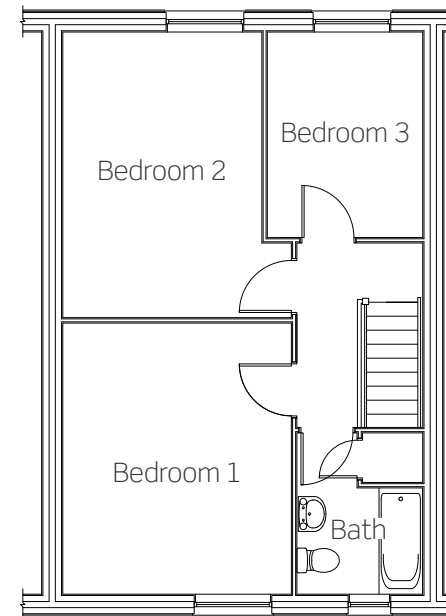
These new homes benefit from:

- Modern open-plan kitchen/ diner layout
- Carpets & flooring provided throughout
- Ground floor cloakroom
- Stylish bathroom suite
- Private enclosed garden laid to lawn
- Allocated parking



#### Ground floor

Kitchen/Dining 4580mm x 3300mm  
Living 4410mm x 3560mm



#### First floor

Bedroom one 3670mm x 4330mm  
Bedroom two 3190mm x 4610mm  
Bedroom three 2500mm x 3300mm

All dimensions are maximum.



Contemporary two bedroom homes situated in the charming town of Shaftesbury, Dorset



## Blackmore Down

The Wincombe

Border Close,  
Shaftesbury SP7 8TS



Image shows from right to left Plots 23-25,  
other Plots and external finishes may vary.

Call **0300 330 0718**  
Visit **[sovereignliving.org.uk](https://sovereignliving.org.uk)**

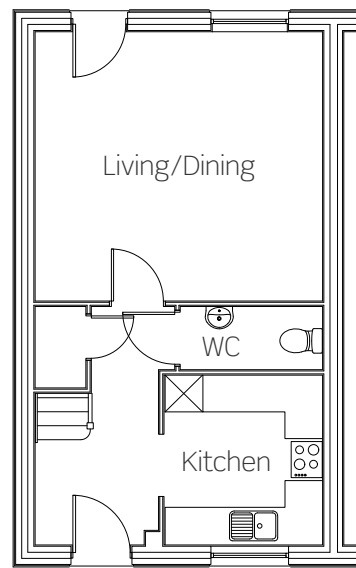
## Blackmore Down The Wincombe

Set on the edge of the pretty town of Shaftesbury in Dorset, midway between Salisbury and Yeovil, Blackmore Down has so much to offer, including good quality schools, excellent shopping and fantastic shops all within easy reach.

### Plots 14, 15, 23 & 25

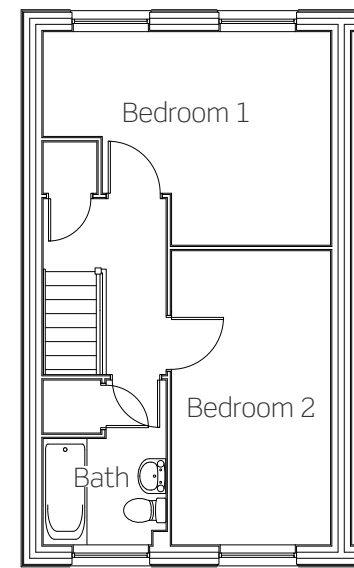
These new homes benefit from:

- Spacious open-plan ground floor living space
- Carpets & flooring provided throughout
- Ground floor cloakroom
- Two double bedrooms
- Stylish bathroom suite
- Private enclosed garden laid to lawn
- Allocated parking



#### Ground floor

Kitchen	2730mm x 2550mm
Living/Dining	4610mm x 4330mm



#### First floor

Bedroom one	4610mm x 3430mm
Bedroom two	2550mm x 4730mm

Plots 14 & 23 have a mirrored layout.  
All dimensions are maximum.





Contemporary three bedroom home situated in the charming town of Shaftesbury, Dorset



# Blackmore Down

The Motcombe

Border Close,  
Shaftesbury SP7 8TS



Plot 24 is shown in the centre.

Call **0300 330 0718**  
Visit **[sovereignliving.org.uk](https://sovereignliving.org.uk)**

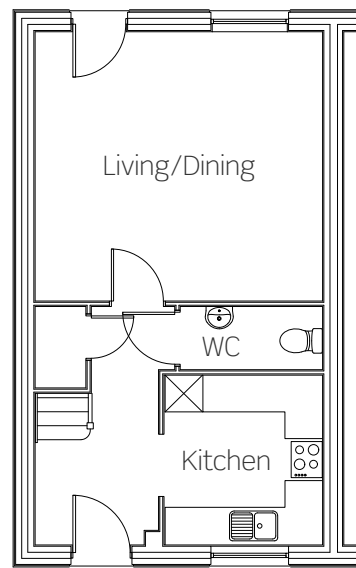
## Blackmore Down The Motcombe

Set on the edge of the pretty town of Shaftesbury in Dorset, midway between Salisbury and Yeovil, Blackmore Down has so much to offer, including good quality schools, excellent shopping and fantastic shops all within easy reach.

### Plot 24

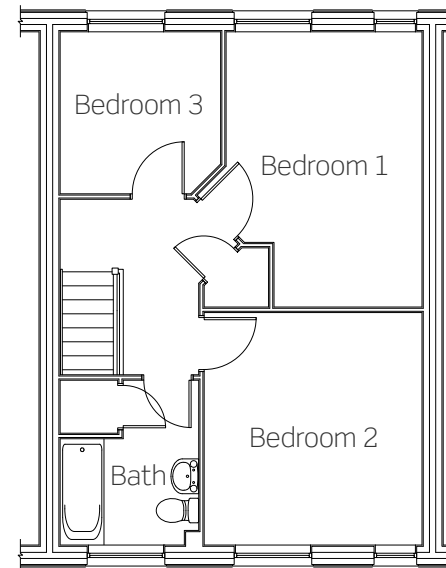
This new home benefits from:

- Spacious open-plan ground floor living space
- Carpets & flooring provided throughout
- Ground floor cloakroom
- Two double bedrooms
- Stylish bathroom suite
- Private enclosed garden laid to lawn
- Allocated parking



#### Ground floor

Kitchen	2730mm x 2550mm
Living/Dining	4610mm x 4330mm



#### First floor

Bedroom one	3150mm x 4420mm
Bedroom two	3500mm x 3730mm
Bedroom three	2500mm x 2600mm





All dimensions are maximum.



# Blackmore Down

Border Close,  
Shaftesbury SP7 8TS

Call **0300 330 0718**  
Visit **[sovereignliving.org.uk](https://sovereignliving.org.uk)**

-  Plots 10, 12, 13, 26, 28 & 29  
The Shaftesbury  
3 bedroom house
-  Plots 11 & 27  
The Gillingham  
3 bedroom house
-  Plots 14, 15, 23 & 25  
The Wincombe  
2 bedroom house
-  Plot 24  
The Motcombe  
3 bedroom house



## Price list & availability

Plot	Property details	Price	40% share	Monthly rent	Estimated monthly service charge	Availability
10	3 bed end terrace house	£240,000	£96,000	£300.00	tbc	Autumn 2020
11	3 bed mid terrace house	£245,000	£98,000	£306.25	tbc	Autumn 2020
12	3 bed mid terrace house	£240,000	£96,000	£300.00	tbc	Autumn 2020
13	3 bed end terrace house	£240,000	£96,000	£300.00	tbc	Autumn 2020
14	2 bed semi detached house	£205,000	£82,000	£256.25	tbc	Autumn 2020
15	2 bed semi detached house	£205,000	£82,000	£256.25	tbc	Autumn 2020
23	2 bed end terrace house	£205,000	£82,000	£256.25	tbc	Autumn 2020
24	3 bed mid terrace house	£240,000	£96,000	£300.00	tbc	Autumn 2020

**Blackmore Down  
Shaftesbury**

**0300 330 0718**

## Price list & availability

Plot	Property details	Price	40% share	Monthly rent	Estimated monthly service charge	Availability
25	2 bed end terrace house	£205,000	£82,000	£256.25	tbc	Autumn 2020
26	3 bed end terrace house	£240,000	£96,000	£300.00	tbc	Autumn 2020
27	3 bed mid terrace house	£245,000	£98,000	£306.25	tbc	Autumn 2020
28	3 bed mid terrace house	£240,000	£96,000	£300.00	tbc	Autumn 2020
29	3 bed end terrace house	£240,000	£96,000	£300.00	tbc	Autumn 2020

**Blackmore Down  
Shaftesbury**

**0300 330 0718**