



Blackberry Park

A stylish collection of 1 & 2 bed apartments

Perfect for first-time buyers


A small collection of 1 & 2 bed apartments available with shared ownership at the Blackberry Park development.

Located in Coalpit Heath, these new homes each include a modern fitted kitchen with a built-in oven, hob and extractor and stylish open-plan kitchen/living/dining. Also benefitting from a stylish bathroom suite with bath and one allocated parking space.

Blackberry Park is surrounded by picturesque views and green open spaces in the nearby countryside, as well as a range of local amenities, play areas and excellent links to the bustling Bristol city centre.



- Apartment block**
- Parking spaces**
- Visitor parking**
- B Bin store**
- C Cycle store**




 **Blackberry Park,**
Rowdell Avenue,
Coalpit Heath,
Bristol,
South Gloucestershire,
BS36 2TP





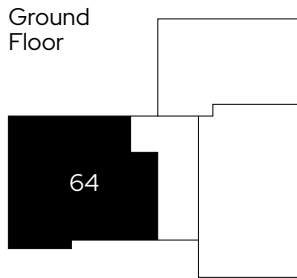
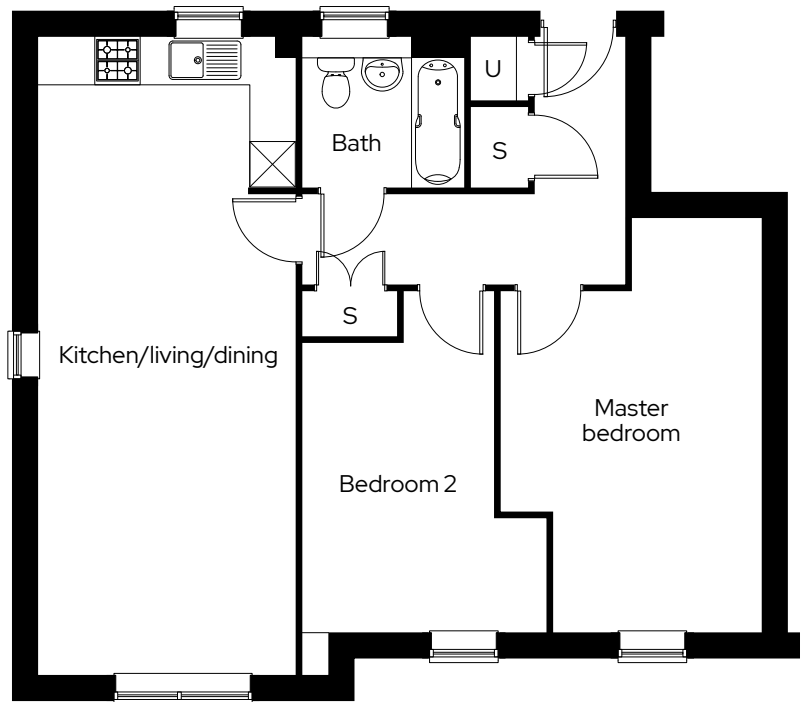
The Coleford

2 bedroom ground floor apartment
Plot 64

2  1  1 

Room

Kitchen/living/dining	3.4m x 8.5m
Master bedroom	3.5m x 5.5m
Bedroom 2	2.5m x 4.5m






S Storage U Utility

We operate a policy of continuous product development and individual features such as windows and elevational treatments may vary. Consequently, particulars contained within this document should be treated as general guidance only. They do not constitute a contract, part of a contract or a warranty. Computer generated images and photographs are for illustration purposes only and may not accurately depict individual plots. Dimensions provided are for general guidance and are not intended to be used for carpet sizes, appliances, spaces or items of furniture. All dimensions are maximum.

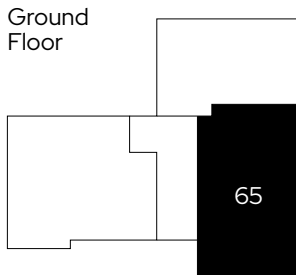
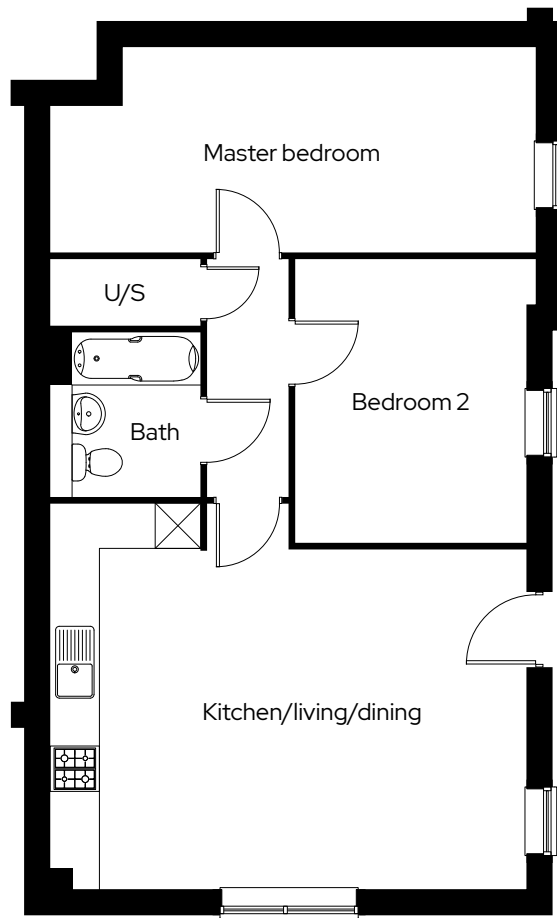
The Hornsea

2 bedroom ground floor apartment
Plot 65

2  1  1 

Room

Kitchen/living/dining	6.4m x 5.2m
Master bedroom	6.4m x 2.7m
Bedroom 2	3.1m x 3.8m






U/S Utility/storage

We operate a policy of continuous product development and individual features such as windows and elevational treatments may vary. Consequently, particulars contained within this document should be treated as general guidance only. They do not constitute a contract, part of a contract or a warranty. Computer generated images and photographs are for illustration purposes only and may not accurately depict individual plots. Dimensions provided are for general guidance and are not intended to be used for carpet sizes, appliances, spaces or items of furniture. All dimensions are maximum.

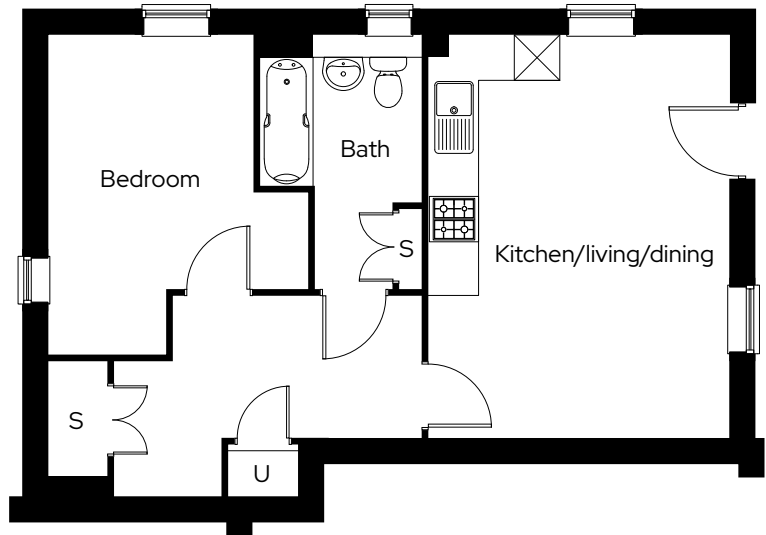
The Loughton

1 bedroom ground floor apartment
Plot 66

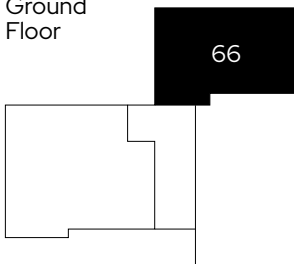
1  1  1 

Room

Kitchen/living/dining	4.0m x 5.4m
Bedroom	2.8m x 4.2m



Ground Floor



S Storage U Utility

Get in touch

0300 330 0718

To find out more about shared ownership and the homes we offer, get in touch today.

→ sovereignliving.org.uk

Head office

Sovereign House
Basing View
Basingstoke
RG21 4FA

As one of the UK's leading shared ownership providers, Sovereign is passionate about giving everyone the opportunity to own their own home.

Our highly dedicated sales team has already helped thousands of people step onto the property ladder and our profit with a purpose principle means we can continue to help thousands more. Established, experienced, and affordable, we are proud to help more people live where they love.