



Vyne Park

A collection of new 1 & 2 bedroom homes



Perfect for modern living

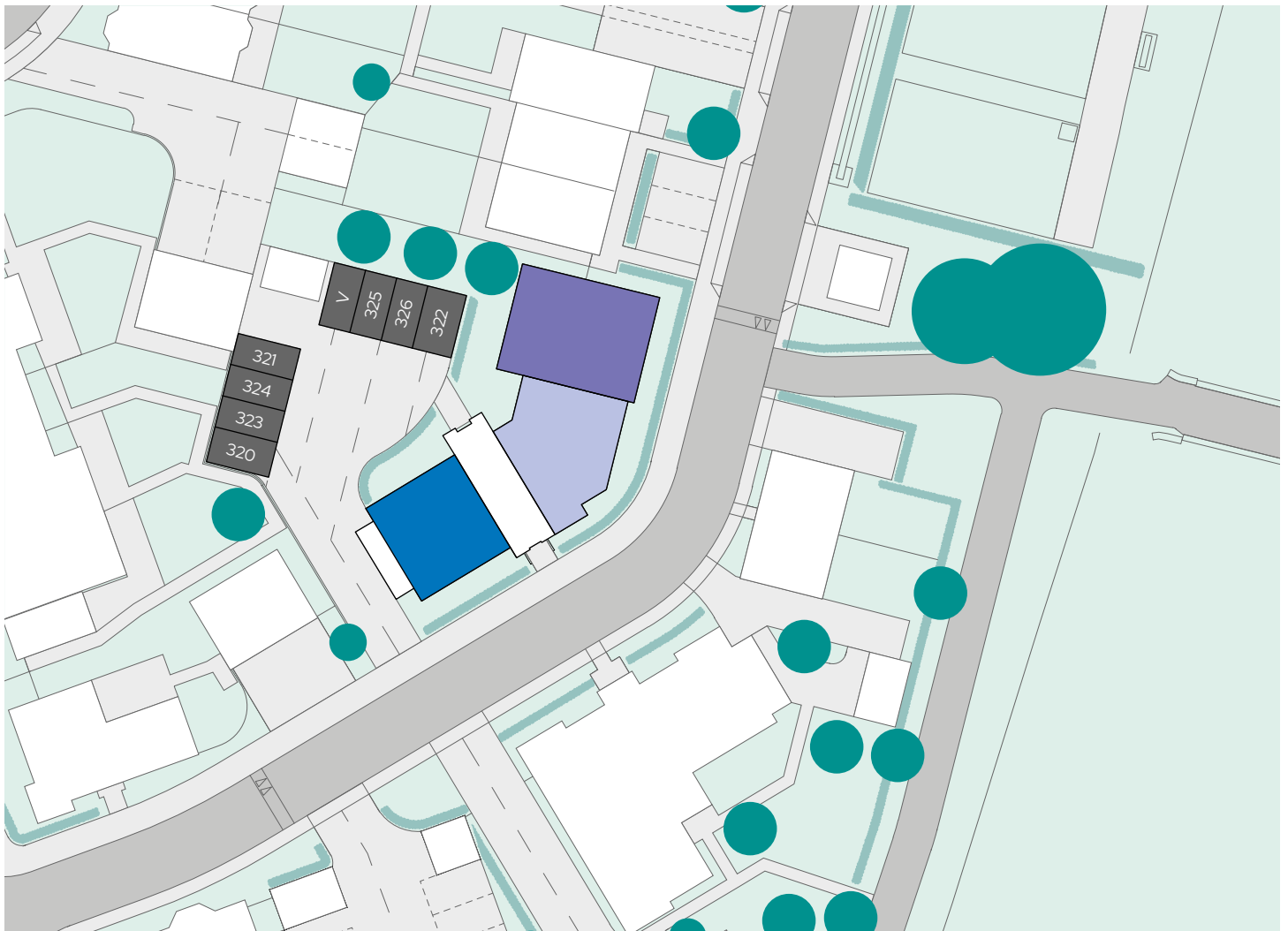
Vyne Park offers excellent transport links and a range of schools, making it a perfect place for families and commuters to call home.

The apartments come complete with carpets and flooring throughout, open-plan living area, modern fitted kitchen with a built-in oven, hob, extractor, fridge/freezer and washer/dryer. Also benefiting from a stylish bathroom suite with bath, excellent storage space and allocated parking. Specific apartments also have the added benefit of a Juliet balcony from the open-plan living area.



-  **The Meadow & The Manydown**
-  **The Burberry, The Wellington & The Sapphire**
-  **The Amphitheatre & The Willis**

Vyne Park
Mansard Crescent,
Chineham,
Basingstoke,
Hampshire
RG24 8BN



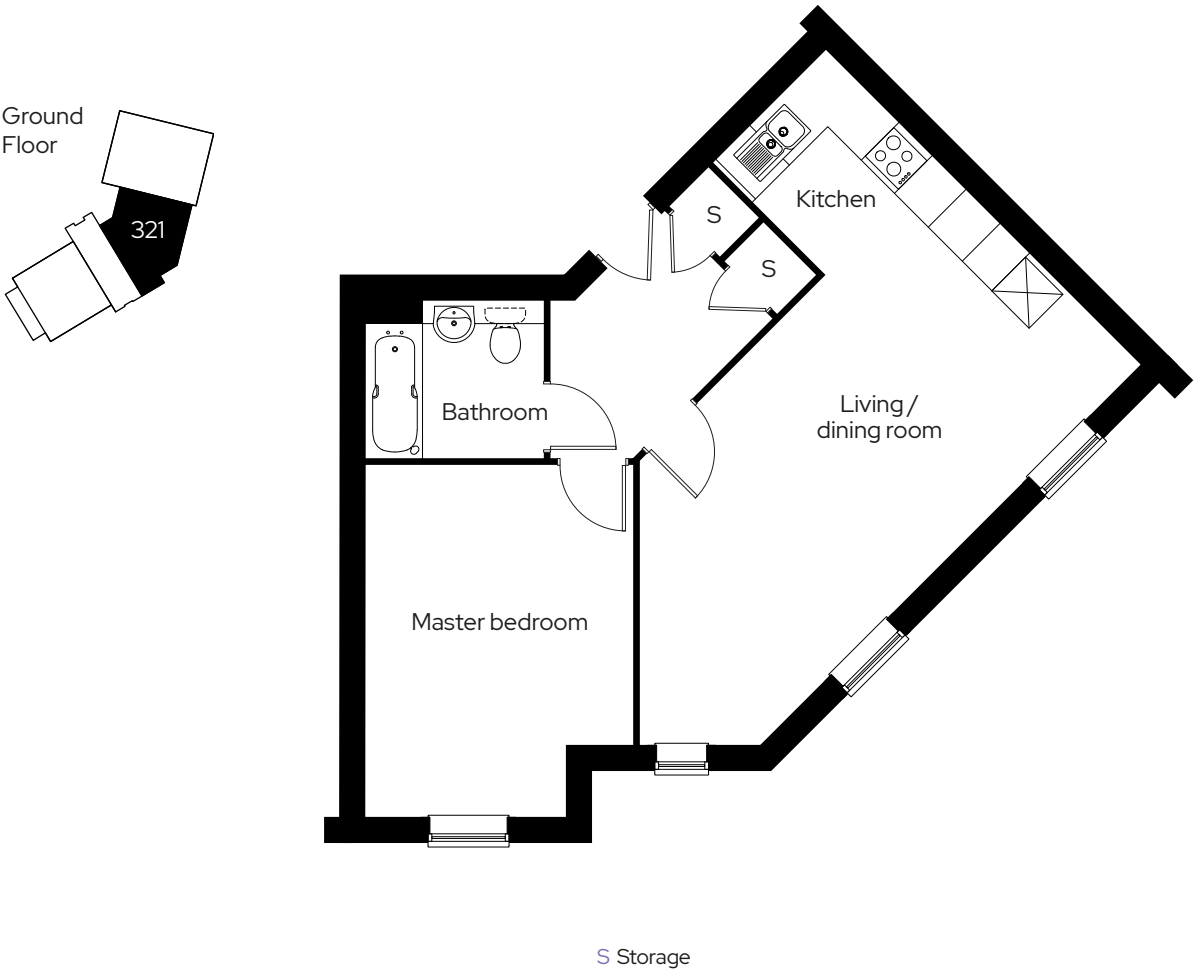


The Burberry

1 bed ground floor apartment
Plot 321

1  1  1 

Room	
Kitchen/living/dining	6.8m x 5.6m
Master bedroom	3.4m x 4.4m






We operate a policy of continuous product development and individual features such as windows and elevational treatments may vary. Consequently, particulars contained within this document should be treated as general guidance only. They do not constitute a contract, part of a contract or a warranty. Computer generated images and photographs are for illustration purposes only and may not accurately depict individual plots. Dimensions provided are for general guidance and are not intended to be used for carpet sizes, appliances, spaces or items of furniture.



The Manydown

2 bed first floor apartment
Plot 325

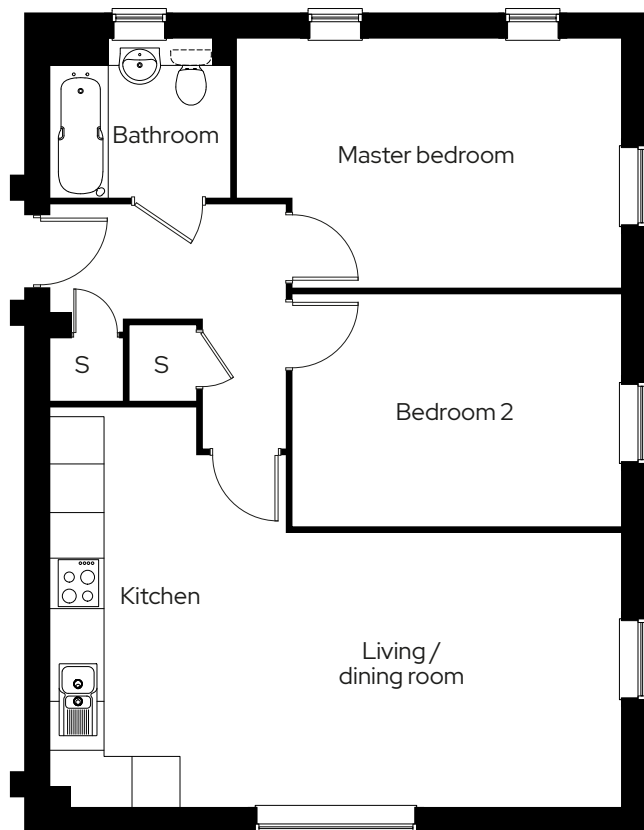
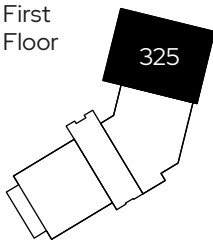
2  1  1 

Room

Kitchen/living/dining	7.2m x 3.4m
Master bedroom	4.1m x 3.1m
Bedroom 2	4.1m x 2.9m



First
Floor



S Storage

We operate a policy of continuous product development and individual features such as windows and elevational treatments may vary. Consequently, particulars contained within this document should be treated as general guidance only. They do not constitute a contract, part of a contract or a warranty. Computer generated images and photographs are for illustration purposes only and may not accurately depict individual plots. Dimensions provided are for general guidance and are not intended to be used for carpet sizes, appliances, spaces or items of furniture.

As one of the UK's leading shared ownership providers, Sovereign is passionate about giving everyone the opportunity to own their own home.

Our highly dedicated sales team has already helped thousands of people step onto the property ladder and our profit with a purpose principle means we can continue to help thousands more. Established, experienced, and affordable, we are proud to help more people live where they love.

Get in touch

0300 330 0718

To find out more about shared ownership and the homes we offer, get in touch today.

→ sovereignliving.org.uk

Head office

Sovereign House
Basing View
Basingstoke
RG21 4FA