



Crownbrook Place

A collection of modern 2 bedroom maisonettes


Perfect for modern living

A collection of modern 2 bedroom maisonettes available with shared ownership at the brand new Crownbrook Place development, Thatcham.

These new homes come complete with a modern fitted kitchen in an open-plan living space, spacious bedrooms, stylish bathroom suite, own private entrance and allocated parking. From the living area, the ground floor maisonettes feature double doors to a private garden and the first floor maisonettes benefit from a Juliet balcony.



-  **Maisonettes**
-  **B Bin store**
-  **Parking spaces**
-  **C Cycle store**




 **Crownbrook Place,**
Langford Way,
Thatcham,
Berkshire,
RG14 4AW





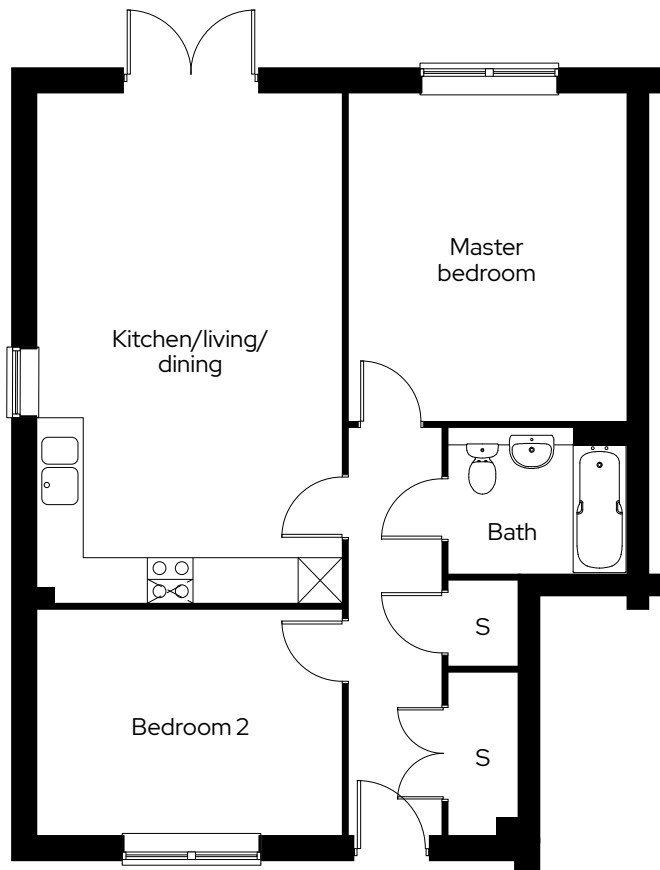
Type 1

2 bedroom ground floor
maisonette with garden
Plot 17

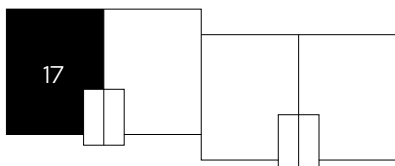
2  1  2 

Room

Kitchen/living/dining	4.0m x 6.8m
Master bedroom	3.7m x 4.4m
Bedroom 2	4.0m x 3.0m






Ground Floor



S Storage

Type 2

2 bed first floor maisonette
with Juliet balcony
Plot 18

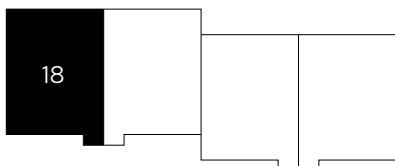
2  1  1 

Room

Kitchen/living/dining	4.0m x 6.8m
Master bedroom	3.7m x 4.7m
Bedroom 2	4.0m x 3.0m



First Floor






† Ground floor entrance S Storage

We operate a policy of continuous product development and individual features such as windows and elevational treatments may vary. Consequently, particulars contained within this document should be treated as general guidance only. They do not constitute a contract, part of a contract or a warranty. Computer generated images and photographs are for illustration purposes only and may not accurately depict individual plots. Dimensions provided are for general guidance and are not intended to be used for carpet sizes, appliances, spaces or items of furniture. All dimensions are maximum.

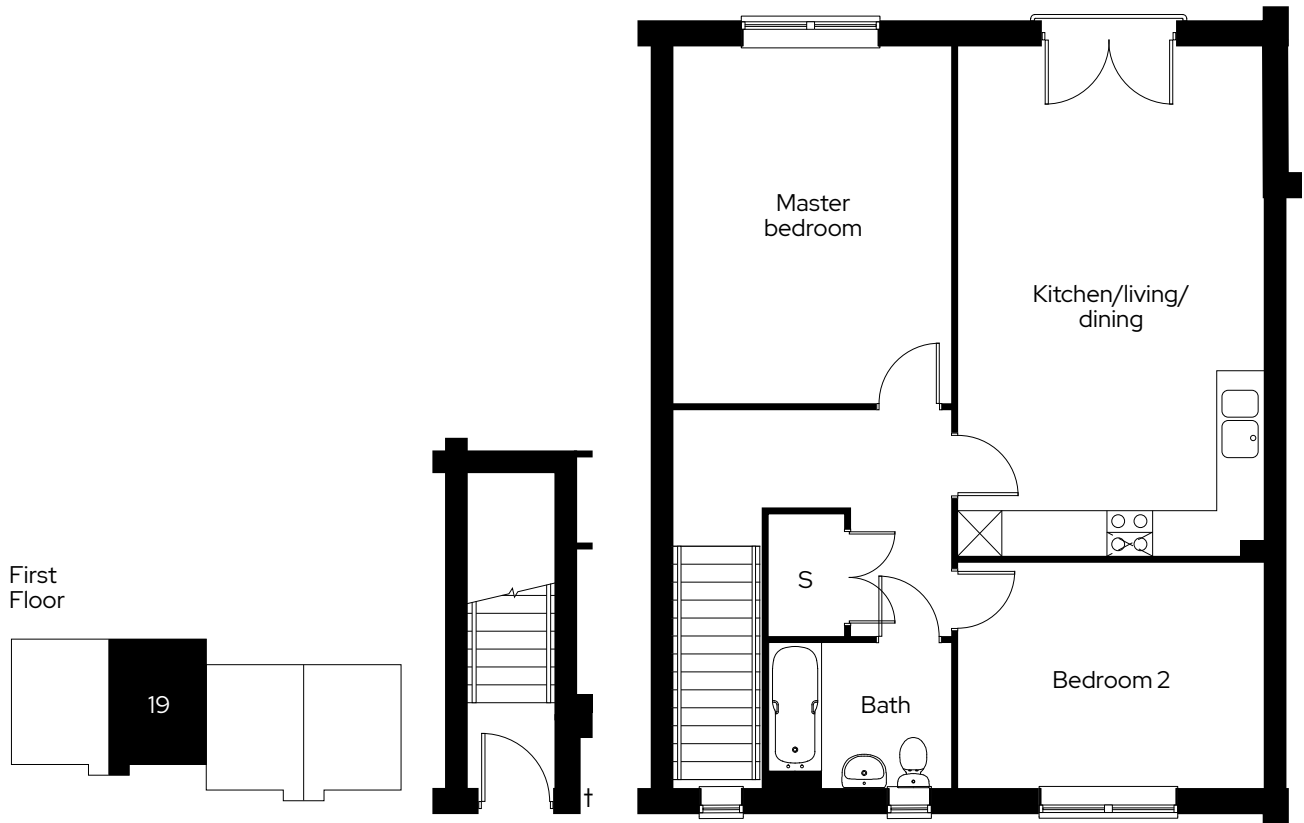
Type 3

2 bed first floor maisonette
with Juliet balcony
Plot 19

2  1  1 

Room

Kitchen/living/dining	4.0m x 6.8m
Master bedroom	3.7m x 4.7m
Bedroom 2	4.0m x 3.0m






† Ground floor entrance S Storage

We operate a policy of continuous product development and individual features such as windows and elevational treatments may vary. Consequently, particulars contained within this document should be treated as general guidance only. They do not constitute a contract, part of a contract or a warranty. Computer generated images and photographs are for illustration purposes only and may not accurately depict individual plots. Dimensions provided are for general guidance and are not intended to be used for carpet sizes, appliances, spaces or items of furniture. All dimensions are maximum.

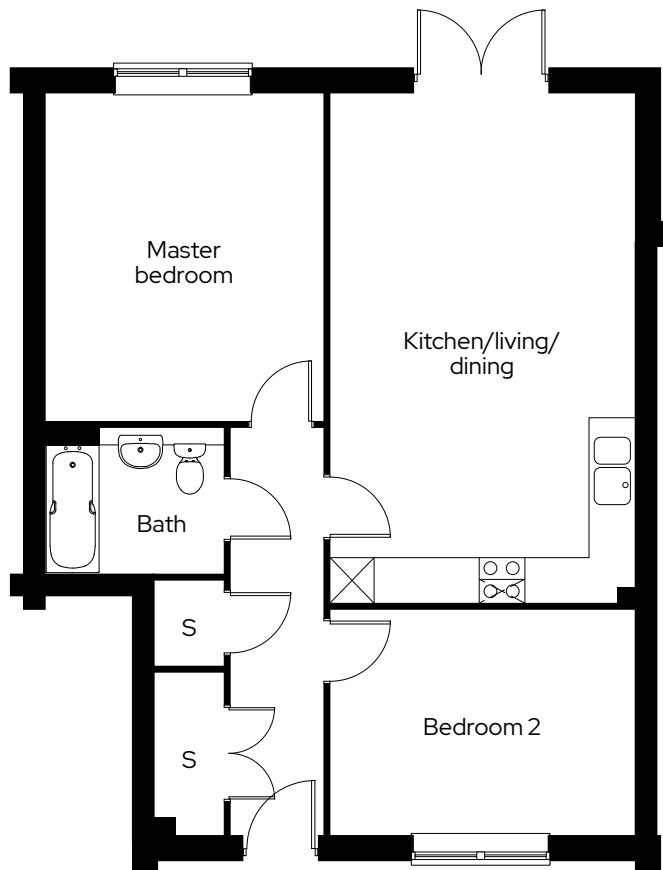
Type 4

2 bedroom ground floor
maisonette with garden
Plot 20

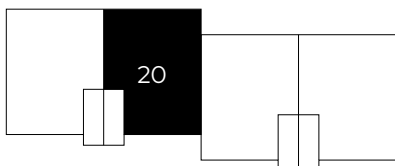
2  1  2 

Room

Kitchen/living/dining	4.0m x 6.8m
Master bedroom	3.7m x 4.4m
Bedroom 2	4.0m x 3.0m



Ground Floor






S Storage

We operate a policy of continuous product development and individual features such as windows and elevational treatments may vary. Consequently, particulars contained within this document should be treated as general guidance only. They do not constitute a contract, part of a contract or a warranty. Computer generated images and photographs are for illustration purposes only and may not accurately depict individual plots. Dimensions provided are for general guidance and are not intended to be used for carpet sizes, appliances, spaces or items of furniture. All dimensions are maximum.

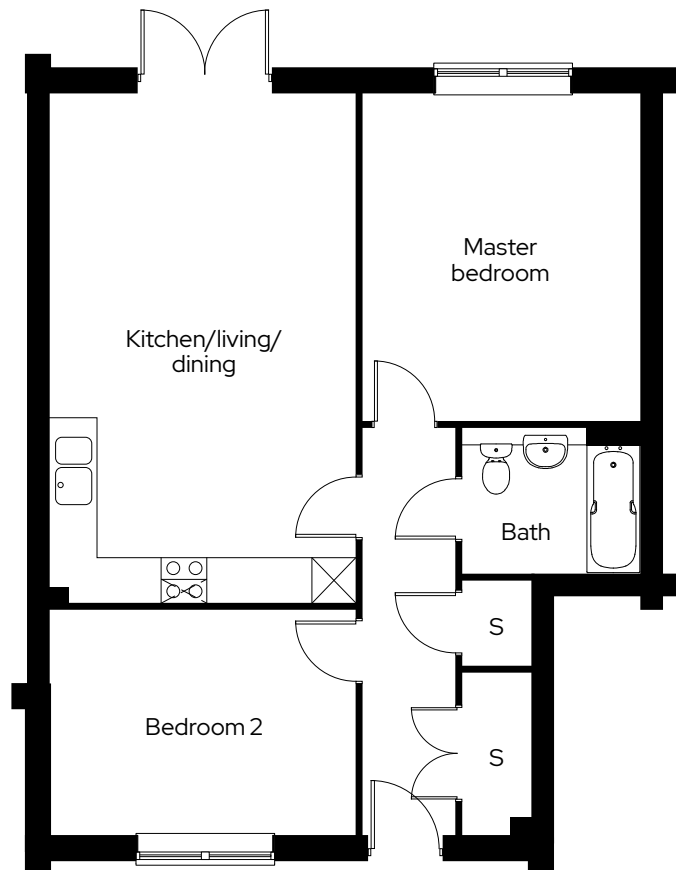
Type 5

2 bedroom ground floor
maisonette with garden
Plot 21

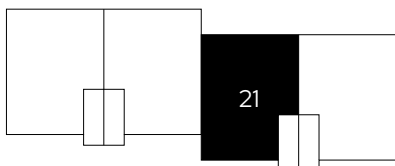
2  1  2 

Room

Kitchen/living/dining	4.0m x 6.8m
Master bedroom	3.7m x 4.4m
Bedroom 2	4.0m x 3.0m






Ground Floor



S Storage

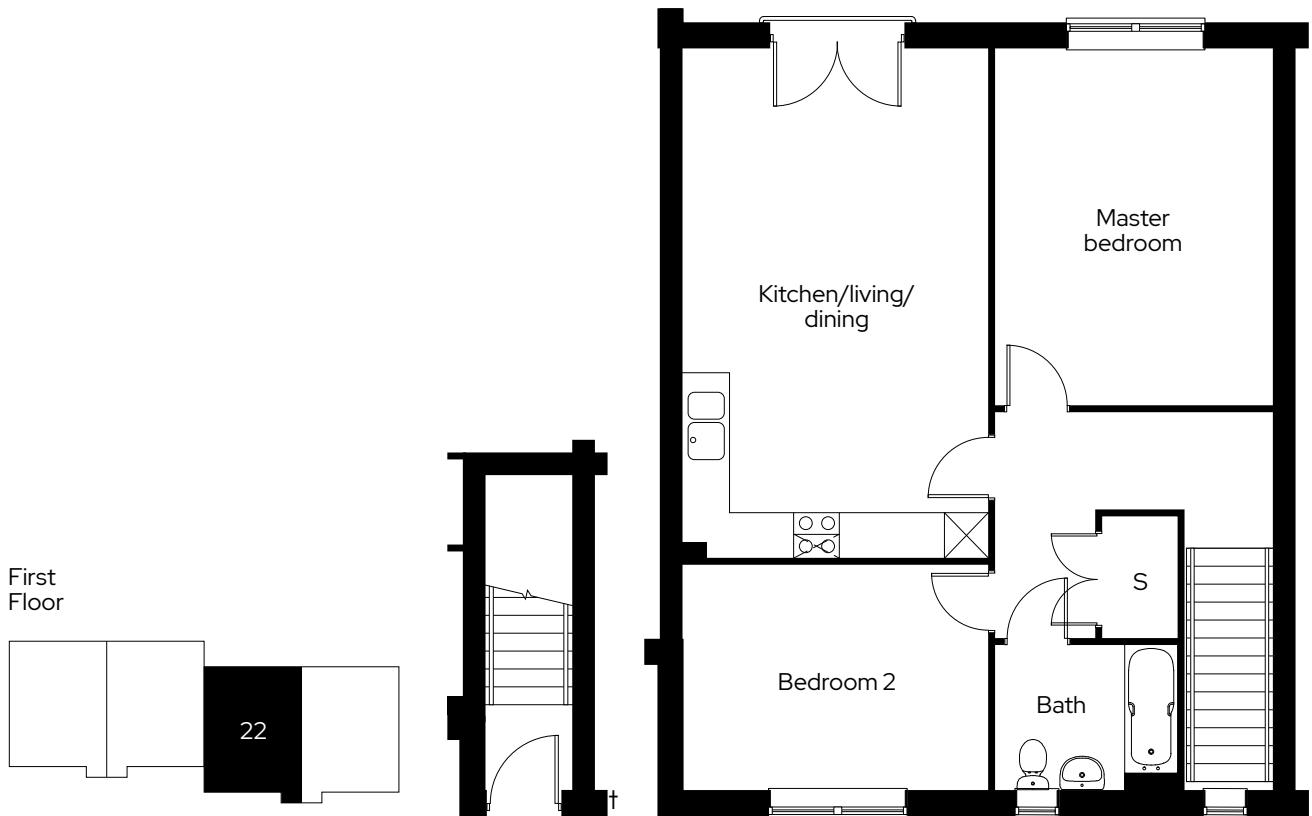
Type 6

2 bed first floor maisonette
with Juliet balcony
Plot 22

2  1  1 

Room

Kitchen/living/dining	4.0m x 6.8m
Master bedroom	3.7m x 4.7m
Bedroom 2	4.0m x 3.0m






† Ground floor entrance S Storage

We operate a policy of continuous product development and individual features such as windows and elevational treatments may vary. Consequently, particulars contained within this document should be treated as general guidance only. They do not constitute a contract, part of a contract or a warranty. Computer generated images and photographs are for illustration purposes only and may not accurately depict individual plots. Dimensions provided are for general guidance and are not intended to be used for carpet sizes, appliances, spaces or items of furniture. All dimensions are maximum.

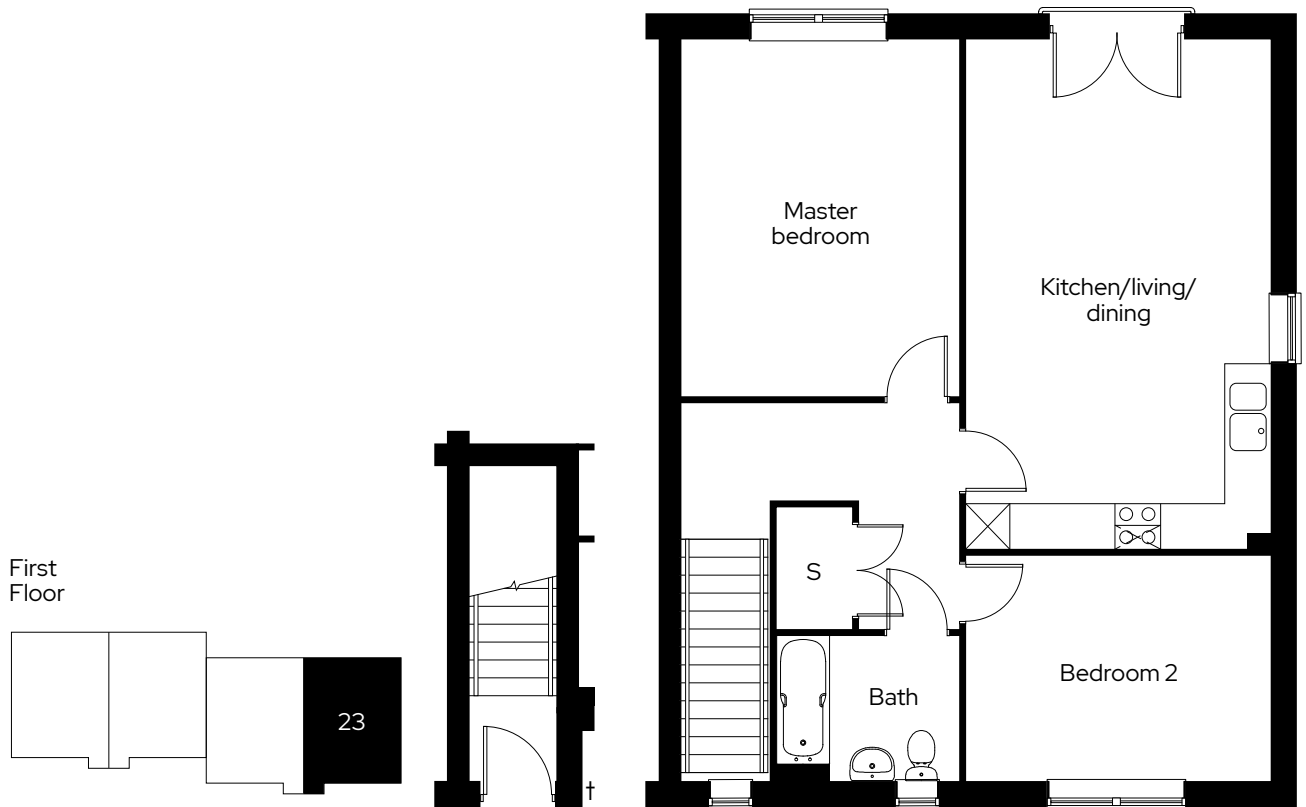
Type 7

2 bed first floor maisonette
with Juliet balcony
Plot 23

2  1  1 

Room

Kitchen/living/dining	4.0m x 6.8m
Master bedroom	3.7m x 4.7m
Bedroom 2	4.0m x 3.0m






† Ground floor entrance S Storage

We operate a policy of continuous product development and individual features such as windows and elevational treatments may vary. Consequently, particulars contained within this document should be treated as general guidance only. They do not constitute a contract, part of a contract or a warranty. Computer generated images and photographs are for illustration purposes only and may not accurately depict individual plots. Dimensions provided are for general guidance and are not intended to be used for carpet sizes, appliances, spaces or items of furniture. All dimensions are maximum.

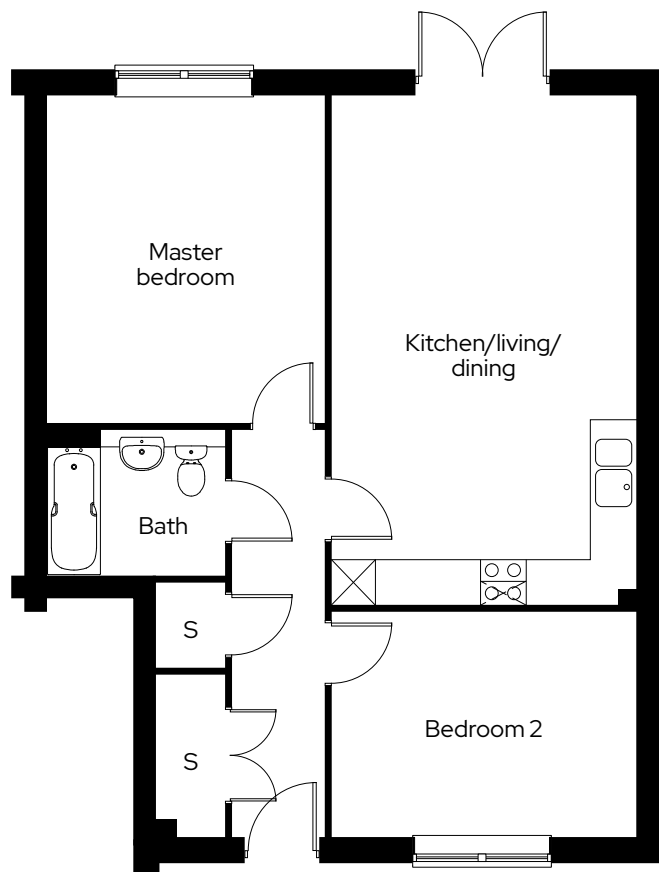
Type 8

2 bedroom ground floor
maisonette with garden
Plot 24

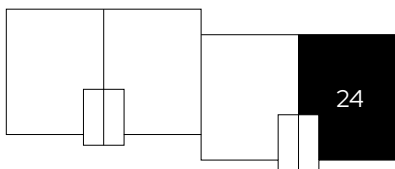
2  1  2 

Room

Kitchen/living/dining	4.0m x 6.8m
Master bedroom	3.7m x 4.4m
Bedroom 2	4.0m x 3.0m



Ground Floor



S Storage

Get in touch

0300 330 0718

To find out more about shared ownership and the homes we offer, get in touch today.

→ sovereignliving.org.uk

Head office

Sovereign House
Basing View
Basingstoke
RG21 4FA

As one of the UK's leading shared ownership providers, Sovereign is passionate about giving everyone the opportunity to own their own home.

Our highly dedicated sales team has already helped thousands of people step onto the property ladder and our profit with a purpose principle means we can continue to help thousands more. Established, experienced, and affordable, we are proud to help more people live where they love.