



Longacre



A stylish two bedroom home in Basingstoke


Enjoy the best of both worlds

Longacre is an established development situated just a few miles from the centre of Basingstoke, the perfect location for families, working professionals and first-time buyers.

Living in Longacre you will be well located for a quick trip into town, or a speedy train ride into London, with the option of taking a stroll through the nearby countryside. This stylish new home will benefit from a modern fitted kitchen, stylish bathroom suite and allocated parking.



-  **The Austen**
-  **Parking spaces**

 **Longacre,**
Piers Lane,
Basingstoke,
Hampshire
RG23 7FJ

North





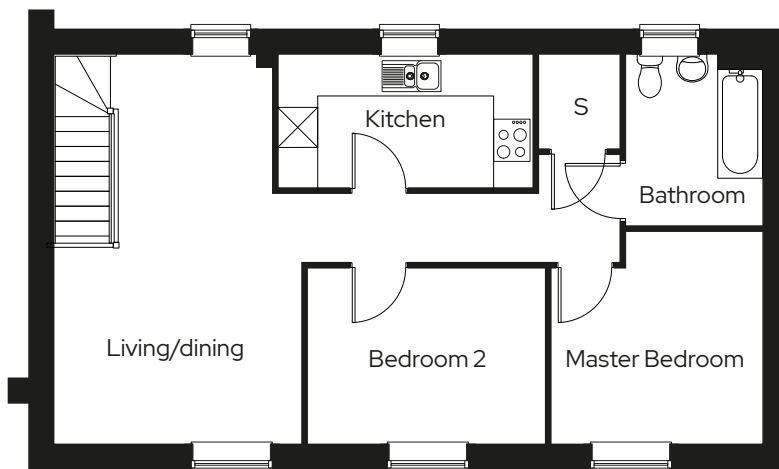
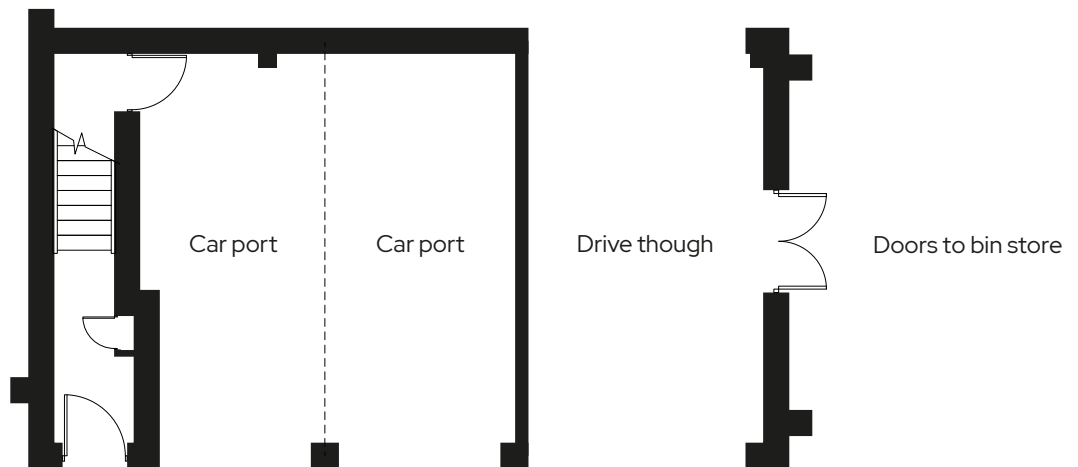

The Austen

2 bedroom coach house
Plot 235

2 1 2

Room

Living/dining room	3.9m x 6.1m
Kitchen	4.0m x 2.1m
Master bedroom	3.3m x 3.3m
Bedroom 2	3.7m x 2.8m



S Storage

We operate a policy of continuous product development and individual features such as windows and elevational treatments may vary. Consequently, particulars contained within this document should be treated as general guidance only. They do not constitute a contract, part of a contract or a warranty. Computer generated images and photographs are for illustration purposes only and may not accurately depict individual plots. Dimensions provided are for general guidance and are not intended to be used for carpet sizes, appliances, spaces or items of furniture. All dimensions are maximum.

Sovereign has an established reputation as one of the south's leading shared ownership and market rent providers and has already helped to find new homes for over 4,000 people.

With 20 years' experience of developing home ownership solutions, Sovereign is dedicated to providing, quality, affordable housing in neighbourhoods where people want to live.

Get in touch

0300 330 0718

To find out more about shared ownership and the homes we offer, get in touch today.

→ sovereignliving.org.uk

Head office

Sovereign House
Basing View
Basingstoke
RG21 4FA