



# Morton Meadows

A small collection of 3 bed homes




# Everything in easy reach


A small collection of 3 bed homes is coming soon to the Morton Meadows development located in Thornbury, South Gloucestershire.

Each home features a modern fitted kitchen with a built-in oven, hob and extractor, open-plan kitchen/diner, spacious living area and a downstairs cloakroom. Also benefitting from a stylish bathroom suite, private enclosed garden laid to lawn and two allocated parking spaces.

At Morton Meadows you will find everything in easy reach. Enjoy the local bustling town of Thornbury on your doorstep whilst being just a short drive from Bristol and Gloucester's city centre.



-  The Whitcliff
-  The Berkeley
-  Parking spaces




 Morton Meadows,  
Bramley Road,  
Thornbury,  
Bristol,  
BS35 1EY





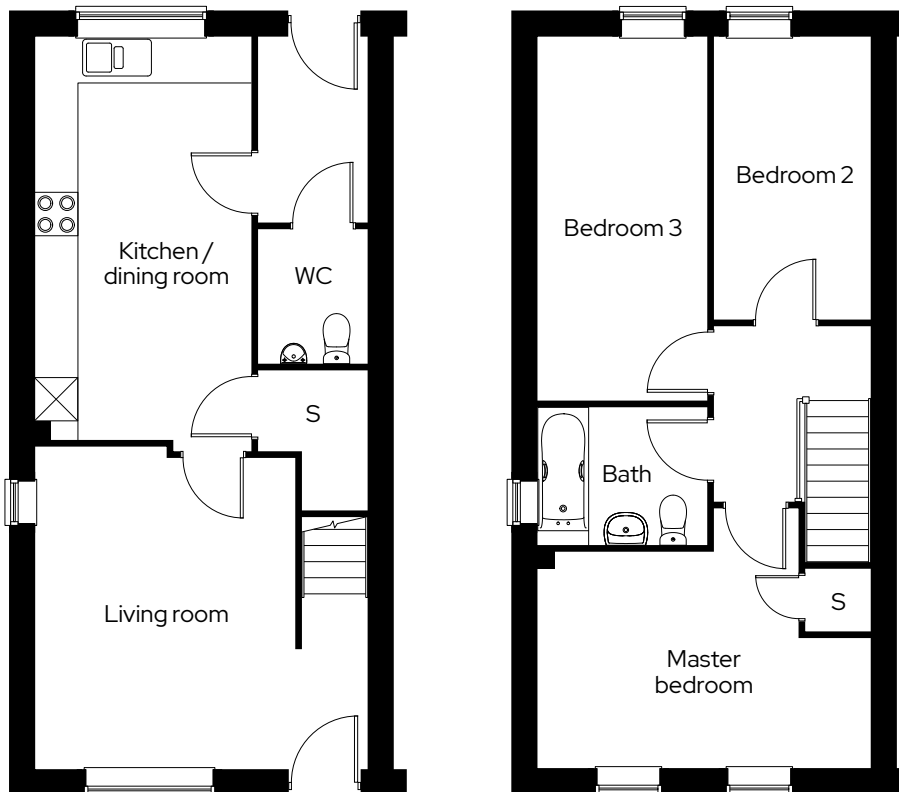
# The Whitcliff

3 bedroom end terraced  
Plot 21\*, 23

3  1  2 

## Room


|                     |             |
|---------------------|-------------|
| Kitchen/dining room | 3.0m x 5.6m |
| Living room         | 3.6m x 4.5m |
| Master bedroom      | 4.7m x 3.6m |
| Bedroom 2           | 2.2m x 3.9m |
| Bedroom 3           | 2.4m x 5.1m |



\* Mirrored plot S Storage

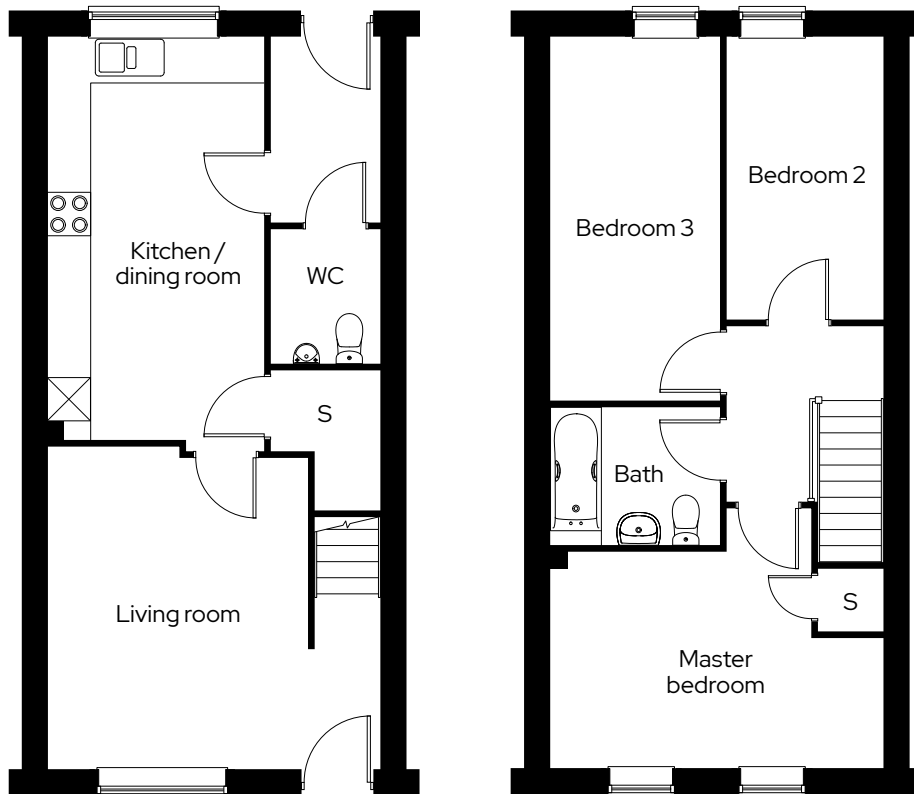
# The Berkeley

3 bedroom mid terraced  
Plot 22

3  1  2 

**Room**

|                     |             |
|---------------------|-------------|
| Kitchen/dining room | 3.0m x 5.6m |
| Living room         | 4.7m x 4.5m |
| Master bedroom      | 4.7m x 3.6m |
| Bedroom 2           | 2.2m x 3.9m |
| Bedroom 3           | 2.4m x 5.1m |



S Storage

We operate a policy of continuous product development and individual features such as windows and elevational treatments may vary. Consequently, particulars contained within this document should be treated as general guidance only. They do not constitute a contract, part of a contract or a warranty. Computer generated images and photographs are for illustration purposes only and may not accurately depict individual plots. Dimensions provided are for general guidance and are not intended to be used for carpet sizes, appliances, spaces or items of furniture. All dimensions are maximum.

## Get in touch

### 0300 330 0718

To find out more about shared ownership and the homes we offer, get in touch today.

→ [sovereignliving.org.uk](https://sovereignliving.org.uk)

### Head office

Sovereign House  
Basing View  
Basingstoke  
RG21 4FA

As one of the UK's leading shared ownership providers, Sovereign is passionate about giving everyone the opportunity to own their own home.

Our highly dedicated sales team has already helped thousands of people step onto the property ladder and our profit with a purpose principle means we can continue to help thousands more. Established, experienced, and affordable, we are proud to help more people live where they love.