



# Brizen Park

A collection of beautiful 2 & 3 bedroom homes




# Everything in easy reach


A collection of 2 & 3 bedroom homes at the popular development of Brizen Park.

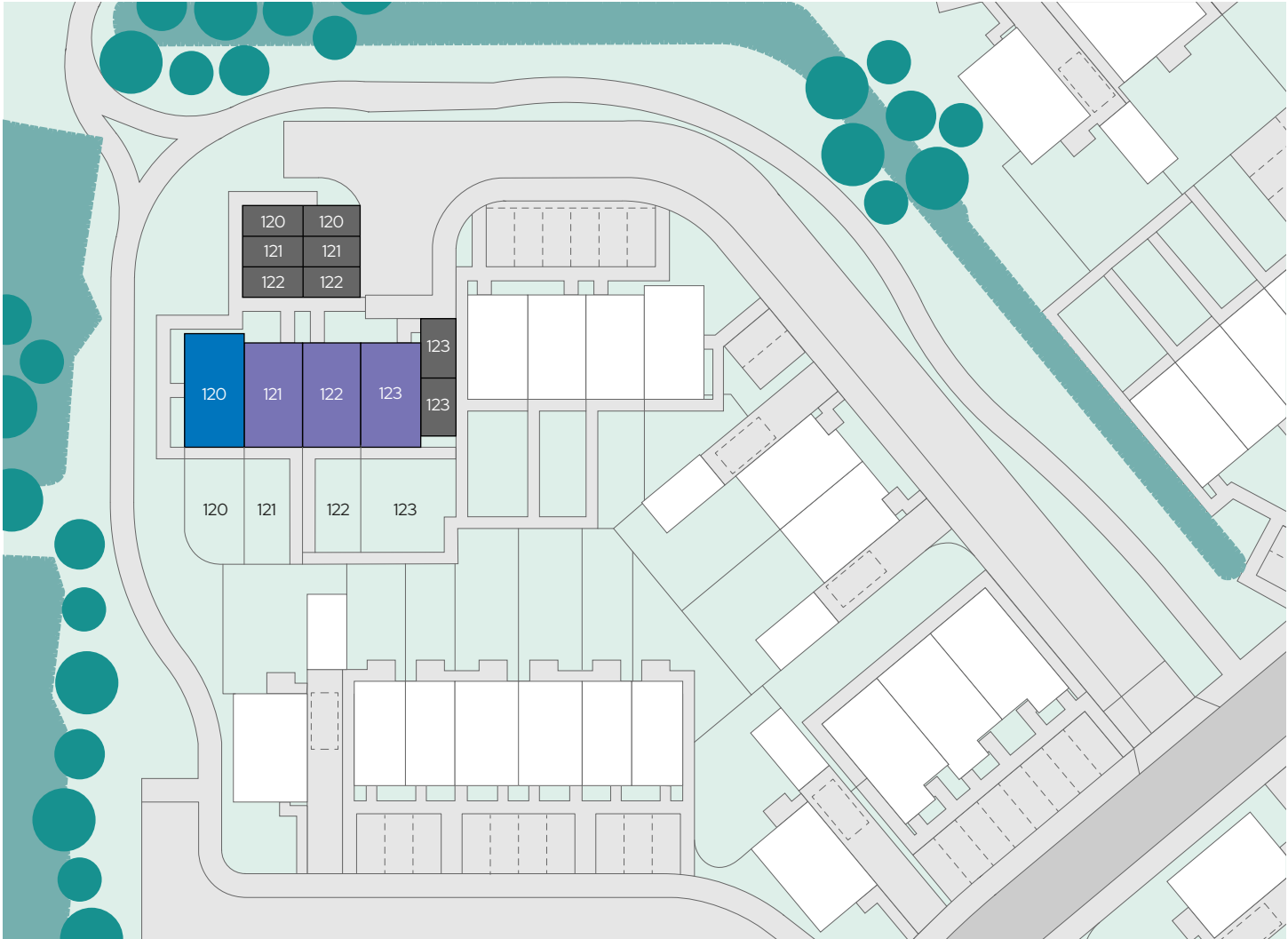
Situated in the village of Shurdington, living here you'll be just 3 miles south of Cheltenham with easy access to the M5 and an array of local amenities. The Cotswolds is also just a stone's throw away where there are plenty of scenic walking and cycling trails, cosy pubs and picturesque towns and villages to explore.

These homes feature a modern fitted kitchen, private enclosed garden, stylish bathroom, downstairs cloakroom and allocated parking.



-  **The Dart**
-  **The Tavy**
-  **Parking spaces**

 **Harbell Close,**  
Shurdington,  
Leckampton,  
Cheltenham,  
Gloucestershire,  
GL53 0FH



Computer generated images and photographs are for illustration purposes only and may not accurately depict individual plots. For exact plot specification, details of external and internal finishes, speak to a Sales Consultant.





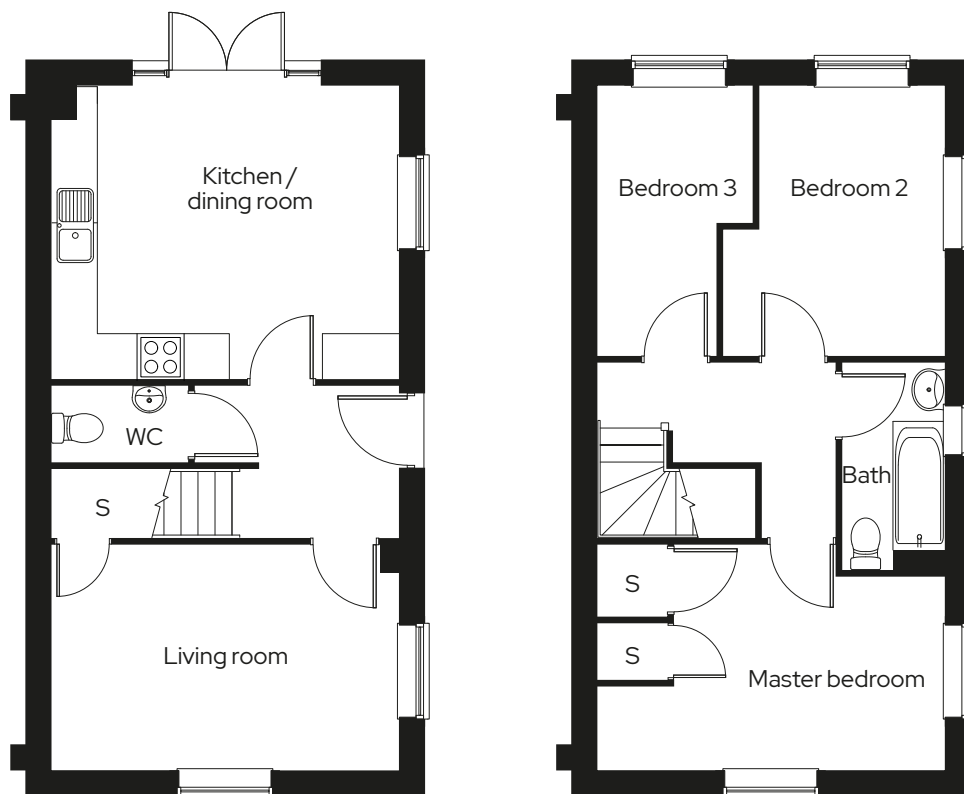
# The Dart

3 bedroom end terraced  
Plot 120

3  1  2 

## Room

Kitchen/dining room	4.6m x 3.3m
Living room	3.6m x 4.4m
Master bedroom	2.5m x 4.3m
Bedroom 2	2.4m x 4.7m
Bedroom 3	2.1m x 3.3m






S Storage

We operate a policy of continuous product development and individual features such as windows and elevational treatments may vary. Consequently, particulars contained within this document should be treated as general guidance only. They do not constitute a contract, part of a contract or a warranty. Computer generated images and photographs are for illustration purposes only and may not accurately depict individual plots. Dimensions provided are for general guidance and are not intended to be used for carpet sizes, appliances, spaces or items of furniture. All dimensions are maximum.

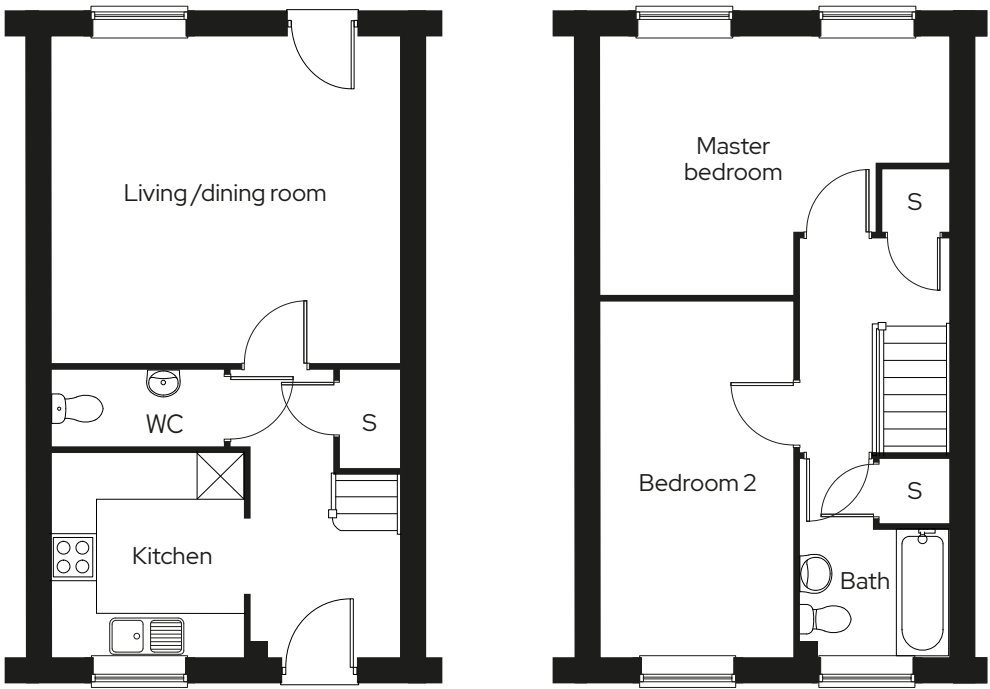


# The Tavy

2 bed mid terraced  
Plot 121,\* 122

2  1  2 

Room	
Living/dining room	4.7m x 4.3m
Kitchen	2.6m x 2.7m
Master bedroom	4.7m x 3.4m
Bedroom 2	2.6m x 4.7m





\* Mirrored plot S Storage

We operate a policy of continuous product development and individual features such as windows and elevational treatments may vary. Consequently, particulars contained within this document should be treated as general guidance only. They do not constitute a contract, part of a contract or a warranty. Computer generated images and photographs are for illustration purposes only and may not accurately depict individual plots. Dimensions provided are for general guidance and are not intended to be used for carpet sizes, appliances, spaces or items of furniture. All dimensions are maximum.

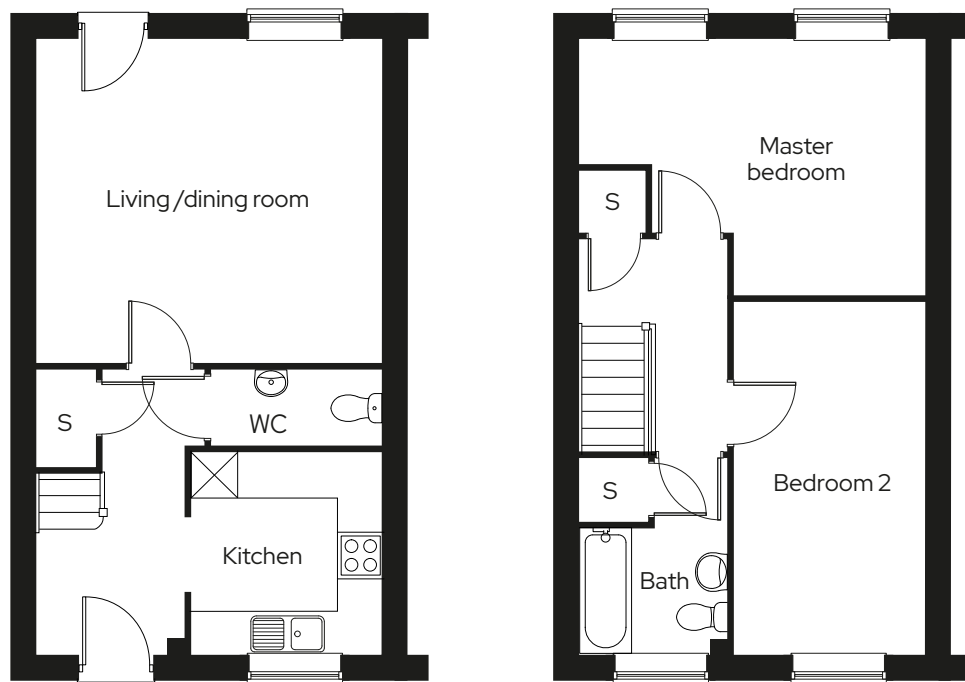
# The Tavy

2 bed end terraced  
Plot 123

2  1  2 

## Room

Living/dining room	4.7m x 4.3m
Kitchen	2.6m x 2.7m
Master bedroom	4.7m x 3.4m
Bedroom 2	2.6m x 4.7m



S Storage

We operate a policy of continuous product development and individual features such as windows and elevational treatments may vary. Consequently, particulars contained within this document should be treated as general guidance only. They do not constitute a contract, part of a contract or a warranty. Computer generated images and photographs are for illustration purposes only and may not accurately depict individual plots. Dimensions provided are for general guidance and are not intended to be used for carpet sizes, appliances, spaces or items of furniture. All dimensions are maximum.

## Get in touch

### 0300 330 0718

To find out more about shared ownership and the homes we offer, get in touch today.

→ [sovereignliving.org.uk](https://sovereignliving.org.uk)

### Head office

Sovereign House  
Basing View  
Basingstoke  
RG21 4FA

As one of the UK's leading shared ownership providers, Sovereign is passionate about giving everyone the opportunity to own their own home.

Our highly dedicated sales team has already helped thousands of people step onto the property ladder and our profit with a purpose principle means we can continue to help thousands more. Established, experienced, and affordable, we are proud to help more people live where they love.