



Priory Green

A small selection of 2 & 3 bedroom homes




A location spoilt for choice

A collection of 2 & 3 bedroom homes coming soon to the Priory Green development in the village of Chilton Polden, Somerset.

These new homes offer modern living with an open-plan kitchen/dining room, separate living room and downstairs cloakroom. Upstairs you will find the family bathroom and bedrooms. Each home has a private garden and 3 allocated parking spaces.

Located in Chilton Polden, a small village with a good selection of shops and services set on the hillsides above the Somerset Levels, it's the perfect place to call home with beautiful countryside close at hand.



-  The Cranleigh
-  The Cannington
-  Parking spaces




 **Priory Green,**
White Meadow,
Chilton Polden,
Bridgwater,
Somerset,
TA7 9EZ





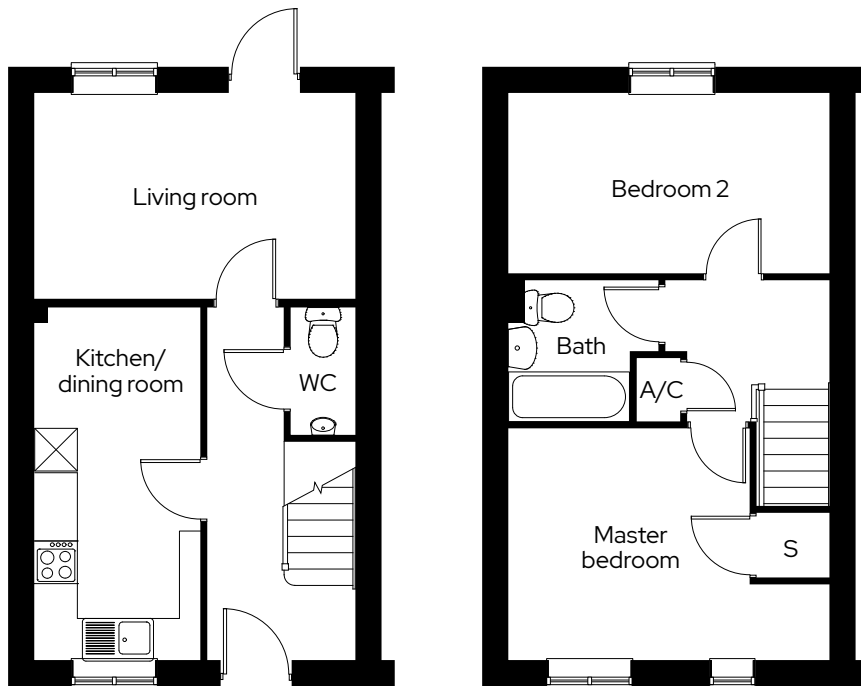
The Cranleigh

2 bedroom semi-detached
Plot 13, 14*

2  1  3 

Room

Kitchen/dining room	2.4m x 5.0m
Living room	4.6m x 3.0m
Master bedroom	4.6m x 3.3m
Bedroom 2	4.6m x 2.6m



* Mirrored plot A/C Airing cupboard S Storage

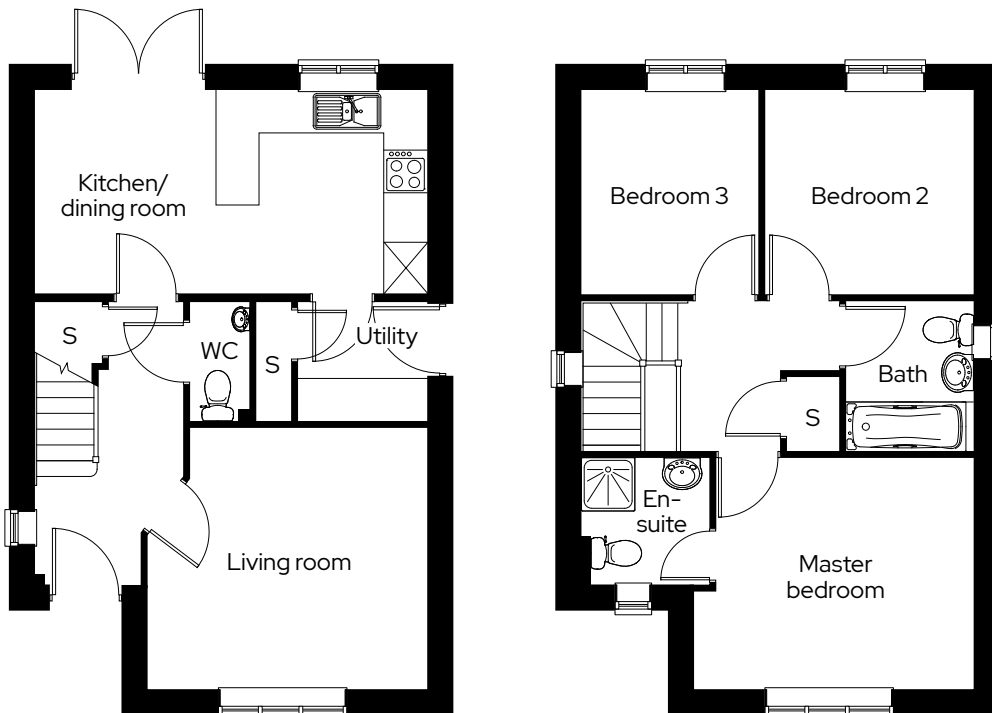
The Cannington

3 bedroom detached
Plot 15

3  2  3 

Room

Kitchen/dining room	5.6m x 2.9m
Living room	4.0m x 3.7m
Master bedroom	4.0m x 3.3m
Bedroom 2	3.0m x 3.0m
Bedroom 3	2.5m x 3.0m



S Storage

We operate a policy of continuous product development and individual features such as windows and elevational treatments may vary. Consequently, particulars contained within this document should be treated as general guidance only. They do not constitute a contract, part of a contract or a warranty. Computer generated images and photographs are for illustration purposes only and may not accurately depict individual plots. Dimensions provided are for general guidance and are not intended to be used for carpet sizes, appliances, spaces or items of furniture. All dimensions are maximum.

Get in touch

0300 330 0718

To find out more about shared ownership and the homes we offer, get in touch today.

→ sovereignliving.org.uk

Head office

Sovereign House
Basing View
Basingstoke
RG21 4FA

As one of the UK's leading shared ownership providers, Sovereign is passionate about giving everyone the opportunity to own their own home.

Our highly dedicated sales team has already helped thousands of people step onto the property ladder and our profit with a purpose principle means we can continue to help thousands more. Established, experienced, and affordable, we are proud to help more people live where they love.