



Crownbrook Place

A selection of beautiful 2 & 3 bedroom houses


Everything in easy reach

A selection of 2 & 3 bedroom houses available with shared ownership at the brand new Crownbrook Place development, Thatcham.

These homes benefit from a modern fitted kitchen, French doors from the living area leading to a private enclosed garden, downstairs cloakroom, stylish bathroom suite and two allocated parking spaces.



- | | | | |
|---|---------------------|---|-----------------------|
|  | The Maple |  | The Holly |
|  | The Yew |  | The Aspen |
|  | The Willow |  | Parking spaces |
|  | The Pine |  | Bin store |
|  | The Hawthorn |  | Cycle store |

 **Crownbrook Place,**
Langford Way,
Thatcham,
Berkshire,
RG14 4AW





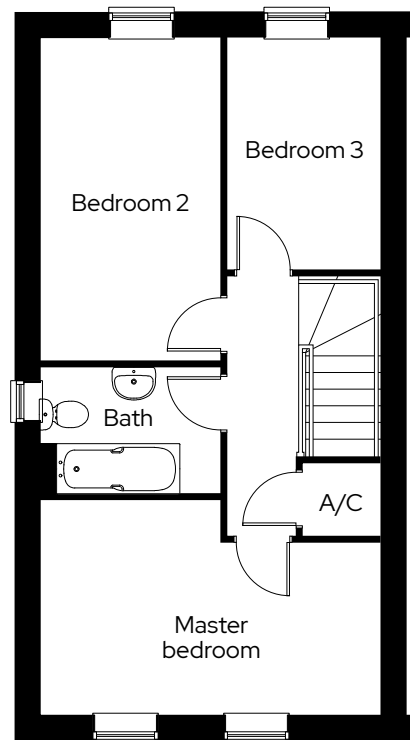
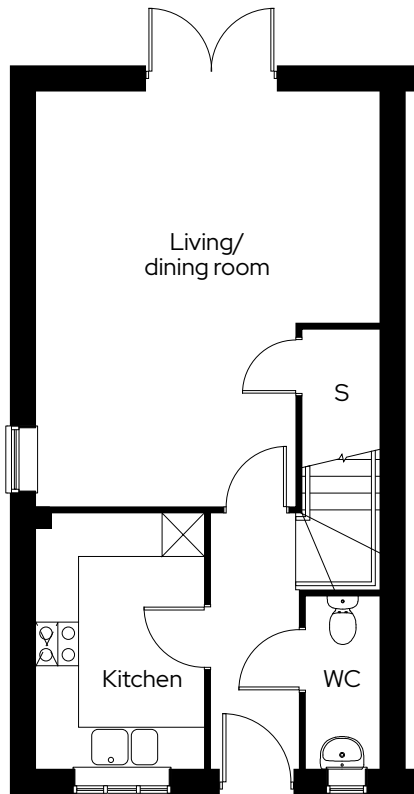
The Maple

3 bedroom end terraced
Plot 25

3  1  2 

Room



Kitchen	2.3m x 3.6m
Living/dining room	4.8m x 5.7m
Master bedroom	4.8m x 3.0m
Bedroom 2	2.5m x 4.5m
Bedroom 3	2.2m x 3.2m



S Storage A/C Airing cupboard

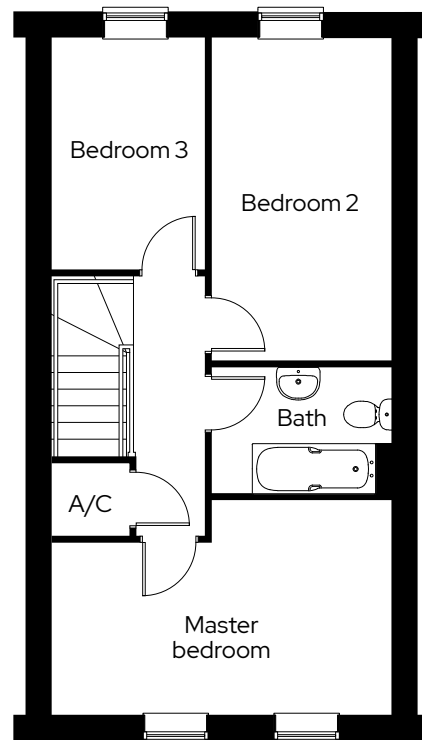
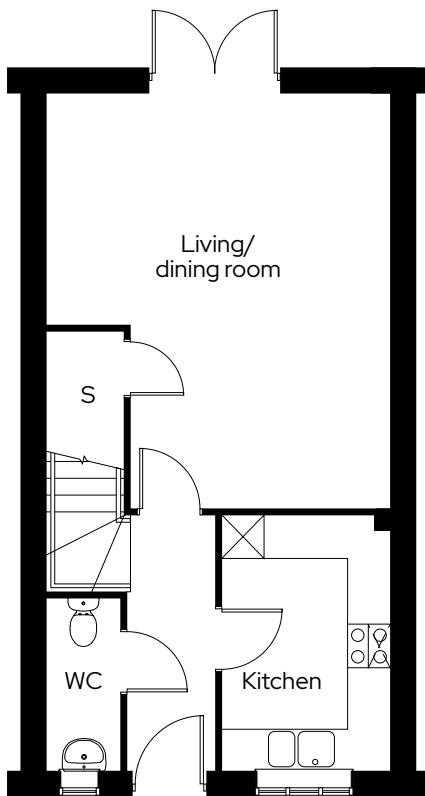
The Yew

3 bedroom mid terraced
Plot 26

3  1  2 

Room

Kitchen	2.3m x 3.6m
Living/dining room	4.8m x 5.7m
Master bedroom	4.8m x 3.0m
Bedroom 2	2.5m x 4.5m
Bedroom 3	2.2m x 3.2m



S Storage A/C Airing cupboard

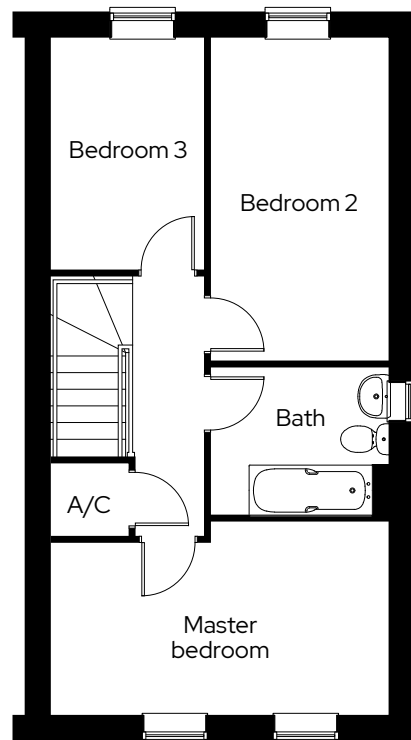
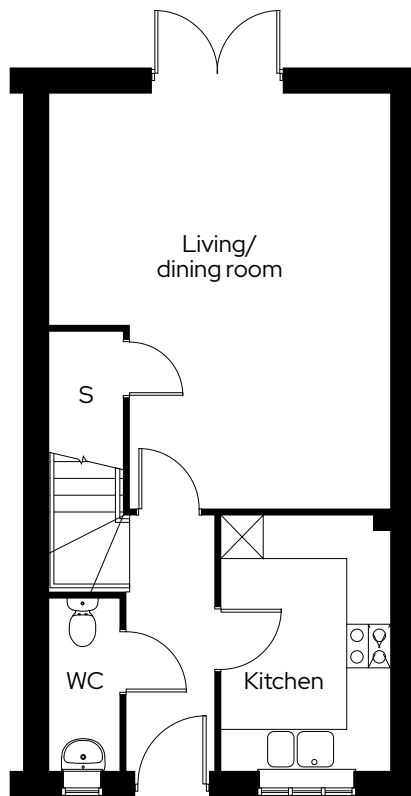
The Willow

3 bedroom end terraced
Plot 27

3  1  2 

Room

Kitchen	2.3m x 3.6m
Living/dining room	4.8m x 5.7m
Master bedroom	4.8m x 3.0m
Bedroom 2	2.5m x 4.5m
Bedroom 3	2.2m x 3.2m





S Storage A/C Airing cupboard

We operate a policy of continuous product development and individual features such as windows and elevational treatments may vary. Consequently, particulars contained within this document should be treated as general guidance only. They do not constitute a contract, part of a contract or a warranty. Computer generated images and photographs are for illustration purposes only and may not accurately depict individual plots. Dimensions provided are for general guidance and are not intended to be used for carpet sizes, appliances, spaces or items of furniture. All dimensions are maximum.

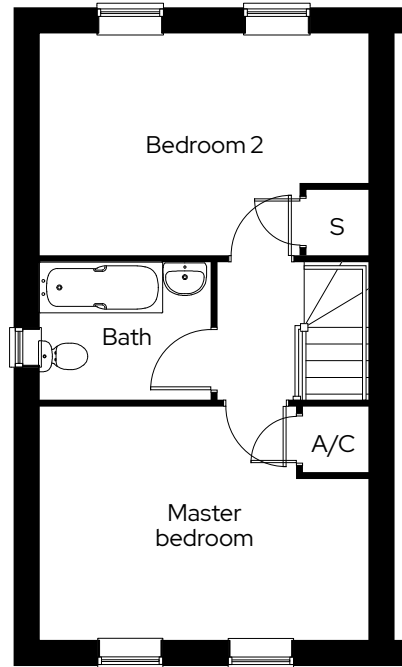
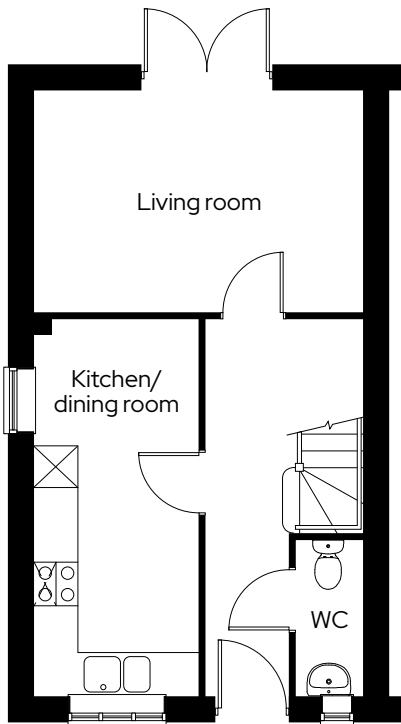
The Pine

2 bedroom end terraced
Plot 30

2  1  2 

Room

Kitchen/dining room	2.3m x 5.2m
Living room	4.6m x 3.1m
Master bedroom	4.6m x 3.2m
Bedroom 2	4.6m x 3.1m






S Storage A/C Airing cupboard

We operate a policy of continuous product development and individual features such as windows and elevational treatments may vary. Consequently, particulars contained within this document should be treated as general guidance only. They do not constitute a contract, part of a contract or a warranty. Computer generated images and photographs are for illustration purposes only and may not accurately depict individual plots. Dimensions provided are for general guidance and are not intended to be used for carpet sizes, appliances, spaces or items of furniture. All dimensions are maximum.

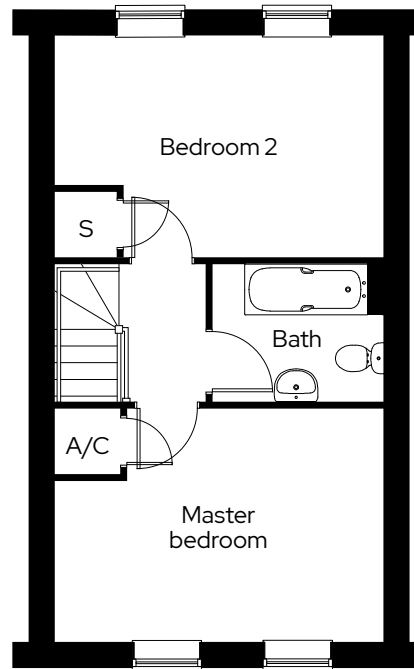
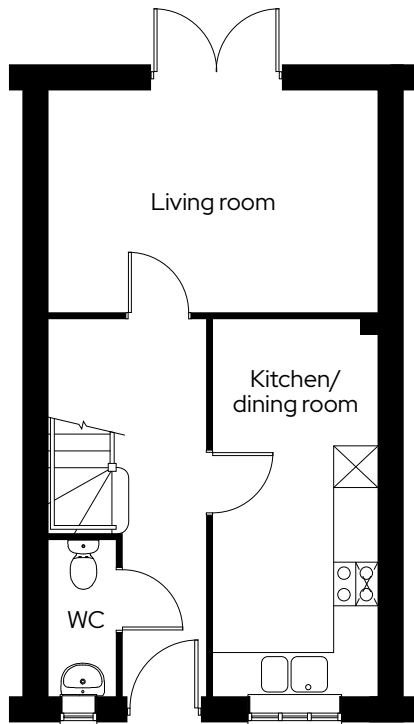
The Hawthorn

2 bedroom mid terraced
Plot 31

2  1  2 

Room

Kitchen/dining room	2.3m x 5.2m
Living room	4.6m x 3.1m
Master bedroom	4.6m x 3.2m
Bedroom 2	4.6m x 3.1m



S Storage A/C Airing cupboard

We operate a policy of continuous product development and individual features such as windows and elevational treatments may vary. Consequently, particulars contained within this document should be treated as general guidance only. They do not constitute a contract, part of a contract or a warranty. Computer generated images and photographs are for illustration purposes only and may not accurately depict individual plots. Dimensions provided are for general guidance and are not intended to be used for carpet sizes, appliances, spaces or items of furniture. All dimensions are maximum.

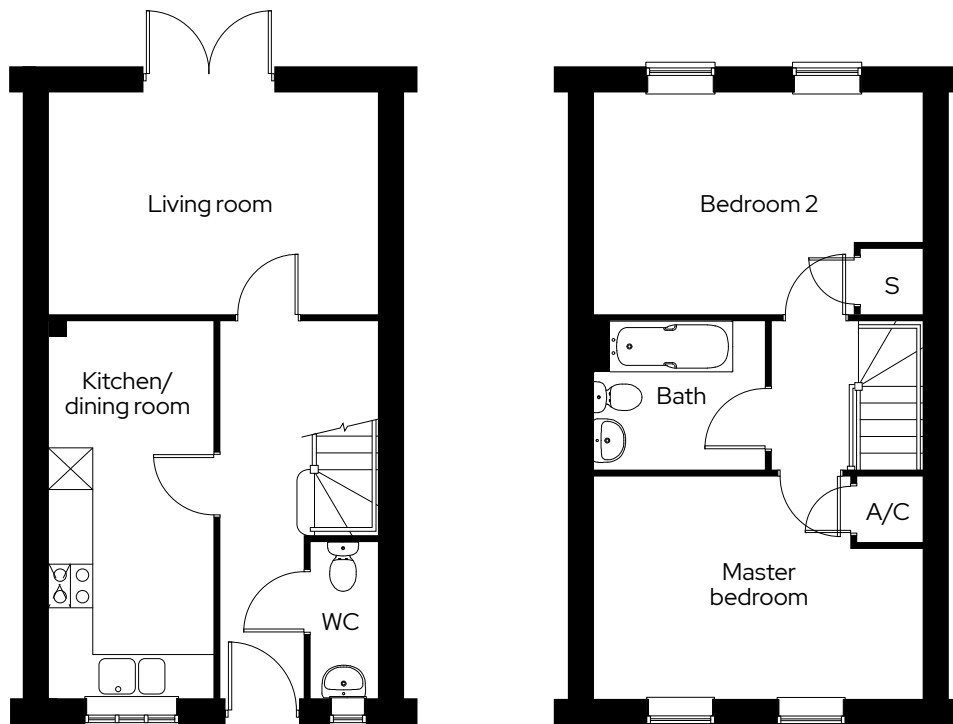
The Holly

2 bedroom mid terraced
Plot 32

2  1  2 

Room

Kitchen/dining room	2.3m x 5.2m
Living room	4.6m x 3.1m
Master bedroom	4.6m x 3.1m
Bedroom 2	4.6m x 3.1m



S Storage A/C Airing cupboard

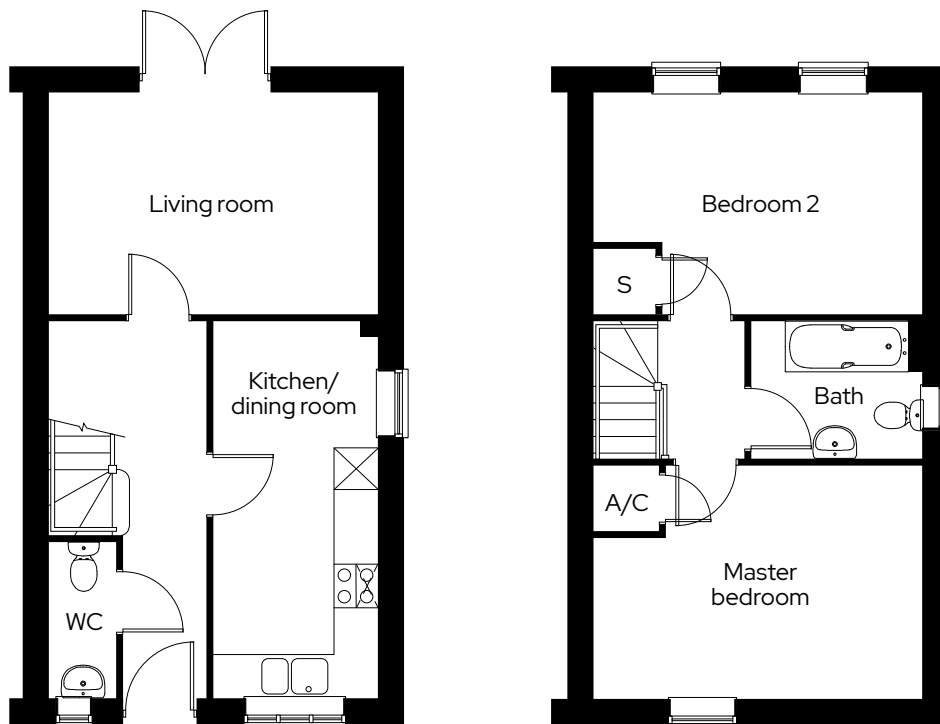
The Aspen

2 bedroom end terraced
Plot 33

2  1  2 

Room

Kitchen/dining room	2.3m x 5.2m
Living room	4.6m x 3.1m
Master bedroom	4.6m x 3.2m
Bedroom 2	4.6m x 3.1m



S Storage A/C Airing cupboard

We operate a policy of continuous product development and individual features such as windows and elevational treatments may vary. Consequently, particulars contained within this document should be treated as general guidance only. They do not constitute a contract, part of a contract or a warranty. Computer generated images and photographs are for illustration purposes only and may not accurately depict individual plots. Dimensions provided are for general guidance and are not intended to be used for carpet sizes, appliances, spaces or items of furniture. All dimensions are maximum.

Get in touch

0300 330 0718

To find out more about shared ownership and the homes we offer, get in touch today.

→ sovereignliving.org.uk

Head office

Sovereign House
Basing View
Basingstoke
RG21 4FA

As one of the UK's leading shared ownership providers, Sovereign is passionate about giving everyone the opportunity to own their own home.

Our highly dedicated sales team has already helped thousands of people step onto the property ladder and our profit with a purpose principle means we can continue to help thousands more. Established, experienced, and affordable, we are proud to help more people live where they love.