



Blackmore Down



Three beautifully designed 2 bedroom homes


An ideal location spoilt for choice

Three 2 bedroom terraced homes situated at the Blackmore Down development in Shaftesbury, Dorset.

These stylish properties will come complete with a modern fitted kitchen with a built-in oven, hob and extractor, open plan lounge/dining room and a downstairs cloakroom. Upstairs you will find two good sized bedrooms along with a stylish family bathroom suite. Carpet is provided throughout and each property also comes with two allocated parking spaces.



-  **The Wincombe (Plots 55, 56 & 57)**
-  **Parking spaces**

 **Vale View**
Shaftesbury,
Dorset,
SP7 8TJ





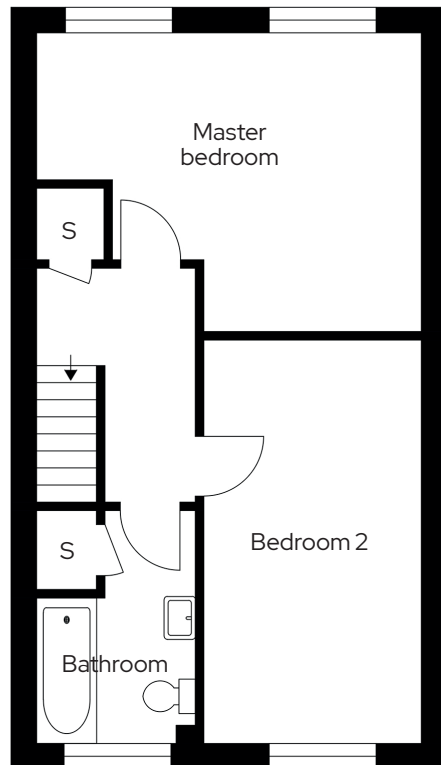
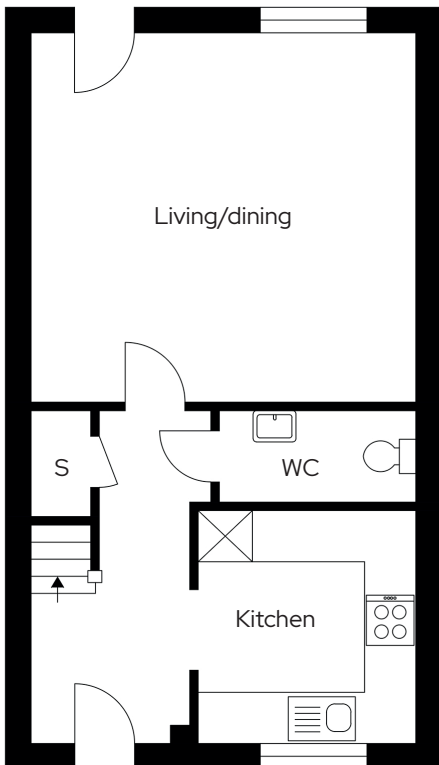
The Wincombe

2 bedroom
Plot 55*, 56, 57

2 1 2

Room

Kitchen	2.73m x 2.55m
Living / dining	4.61m x 4.33m
Master bedroom	4.61m x 3.43m
Bedroom 2	4.73m x 2.55m



* Mirrored plot S Storage

We operate a policy of continuous product development and individual features such as windows and elevational treatments may vary. Consequently, particulars contained within this document should be treated as general guidance only. They do not constitute a contract, part of a contract or a warranty. Computer generated images and photographs are for illustration purposes only and may not accurately depict individual plots. Dimensions provided are for general guidance and are not intended to be used for carpet sizes, appliances, spaces or items of furniture. All dimensions are maximum.

Get in touch

0300 330 0718

To find out more about shared ownership and the homes we offer, get in touch today.

→ sovereignliving.org.uk

Head office

Sovereign House
Basing View
Basingstoke
RG21 4FA

As one of the UK's leading shared ownership providers, Sovereign is passionate about giving everyone the opportunity to own their own home.

Our highly dedicated sales team has already helped thousands of people step onto the property ladder and our profit with a purpose principle means we can continue to help thousands more. Established, experienced, and affordable, we are proud to help more people live where they love.