

Stylish three bedroom homes situated in Leckhampton. Available with shared ownership.



Brizen Park

Honeysuckle Avenue,
Leckhampton, Cheltenham,
Gloucestershire GL53 0AT



Image shows from right to left Plots 1-4.

Call **0300 330 0718**
Visit **[sovereignliving.org.uk](https://www.sovereignliving.org.uk)**

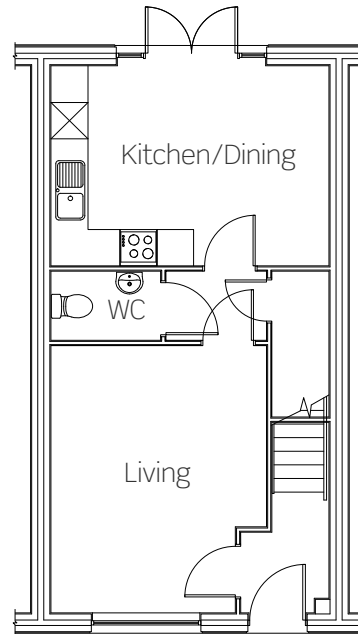
Brizen Park

Located just south of Cheltenham with easy access to the M5, this is the ideal location for families and commuters to call home.

Plots 2-4

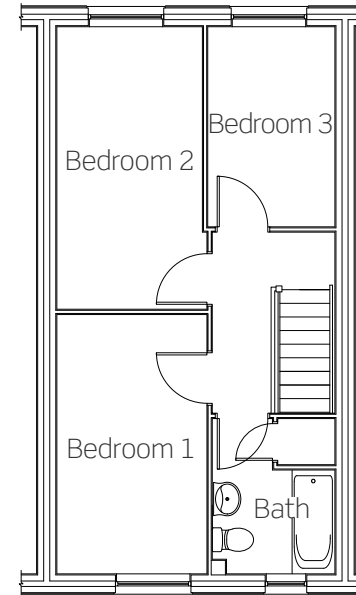
These new homes benefit from:

- Modern fitted kitchen with a built-in oven, hob and extractor
- Open-plan kitchen/dining with double doors to garden
- Downstairs cloakroom
- Stylish bathroom suite
- Private enclosed garden laid to lawn
- Two allocated parking spaces



Ground floor

Kitchen/Dining 4631mm x 3325mm
Living 3581mm x 4435mm



First floor

Bedroom one 2498mm x 4304mm
Bedroom two 2423mm x 4687mm
Bedroom three 2120mm x 3325mm

Plot 2 has a mirrored layout.
Plots 2 & 3 mid-terrace.
Plot 4 end-terrace.
All dimensions are maximum.

Brizen Park
 Honeysuckle Avenue,
 Leckhampton,
 Cheltenham,
 Glos GL53 0AT

Call **0300 330 0718**
 Visit sovereignliving.org.uk

- Plot 1
4 bedroom house
- Plots 2-4
3 bedroom house



We operate a policy of continuous product development and individual features such as windows and elevational treatments may vary. Consequently, particulars contained within this document should be treated as general guidance only. They do not constitute a contract, part of a contract or a warranty. Computer generated images and photographs are for illustration purposes only and may not accurately depict individual plots. Dimensions provided are for general guidance and are not intended to be used for carpet sizes, appliances, spaces or items of furniture. Sovereign Living is a non-charitable subsidiary of Sovereign Housing Association Limited, a charitable association.