



Three bedroom homes exclusively built for shared ownership in Totton, Southampton



Calder Close

The Bartley

Southampton SO40 9NF



Image shows Plots 1-5, other Plots may vary.

Call **0300 330 0718**
Visit **[sovereignliving.org.uk](https://www.sovereignliving.org.uk)**

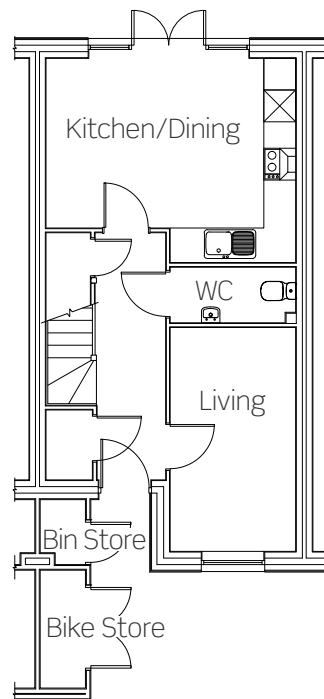
Calder Close The Bartley

The area of Totton & Eling is an idyllic place to choose to live, with good amenities, schools and transport links. And with the vibrant city of Southampton just a short drive away, you will be living in a very well-connected part of the country.

Plots 1-10

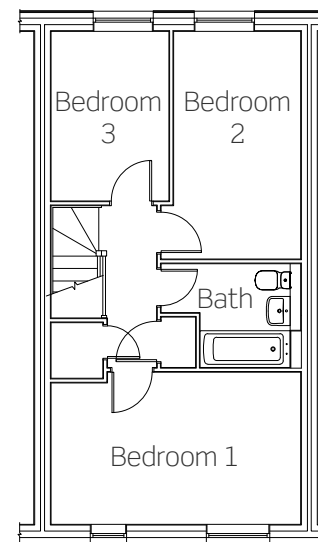
These new homes benefit from:

- Modern open-plan kitchen/diner with French doors leading out onto private enclosed garden laid to lawn
- Convenient ground floor storage
- Ground floor cloakroom
- Stylish bathroom suite
- Two allocated parking spaces



Ground floor

Kitchen/Dining 4765mm x 3895mm
Living 2408mm x 4314mm



First floor

Bedroom one 4765mm x 2915mm
Bedroom two 2440mm x 4340mm
Bedroom three 2262mm x 3245mm

Typical floor plan. Plots 1, 3, 6 & 8 have a mirrored layout. All dimensions are maximum.

Calder Close
Southampton
SO40 9NF

Call **0300 330 0718**
Visit **sovereignliving.org.uk**

 Plots 1-10
The Bartley
3 bedroom house



Price list & availability

Plot	Property details	Price	40% share	Monthly rent	Monthly service charge	Availability
1	3 bedroom end-terraced house	£315,000	£126,000	£393.75	TBC	Autumn 2020
2	3 bedroom middle-terraced house	£310,000	£124,000	£387.50	TBC	Autumn 2020
3	3 bedroom middle-terraced house	£310,000	£124,000	£387.50	TBC	Autumn 2020
4	3 bedroom middle-terraced house	£310,000	£124,000	£387.50	TBC	Autumn 2020
5	3 bedroom end-terraced house	£315,000	£126,000	£393.75	TBC	Autumn 2020
6	3 bedroom end-terraced house	£315,000	£126,000	£393.75	TBC	Autumn 2020
7	3 bedroom middle-terraced house	£310,000	£124,000	£387.50	TBC	Autumn 2020

Calder Close

Totton

0300 330 0718

living@sovereign.org.uk

Price list & availability

Plot	Property details	Price	40% share	Monthly rent	Monthly service charge	Availability
8	3 bedroom middle-terraced house	£310,000	£124,000	£387.50	TBC	Autumn 2020
9	3 bedroom middle-terraced house	£310,000	£124,000	£387.50	TBC	Autumn 2020
10	3 bedroom end-terraced house	£315,000	£126,000	£393.75	TBC	Autumn 2020

Calder Close

Totton

0300 330 0718
living@sovereign.org.uk