



# Perrybrook

A stylish collection of 3 bed homes

# An abundance of green space

Built by award winning developer Linden Homes, these beautiful 3 bedroom homes benefit from a modern fitted kitchen with a built-in oven, hob and extractor, stylish bathroom suite with bath, downstairs cloakroom, private enclosed garden laid to lawn and two allocated parking spaces.

With an abundance of open countryside on your doorstep, fantastic village amenities, and Gloucester and Cheltenham in easy reach, Perrybrook is the perfect place for families and commuters to call home.



-  **The Witcombe**
-  **The Cooper**

**Perrybrook**  
Saxon Drive,  
Brockworth,  
Gloucester  
GL3 4XY

North







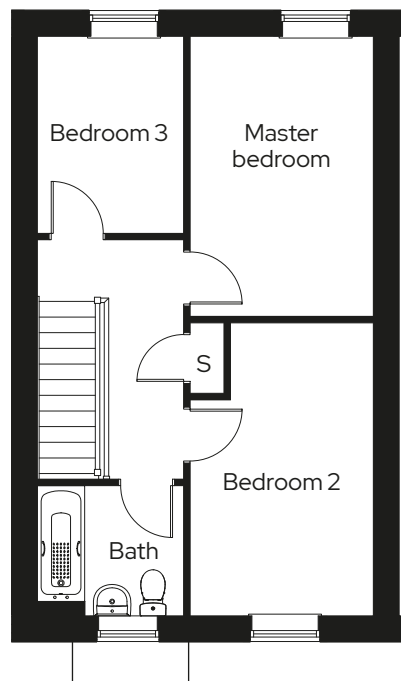
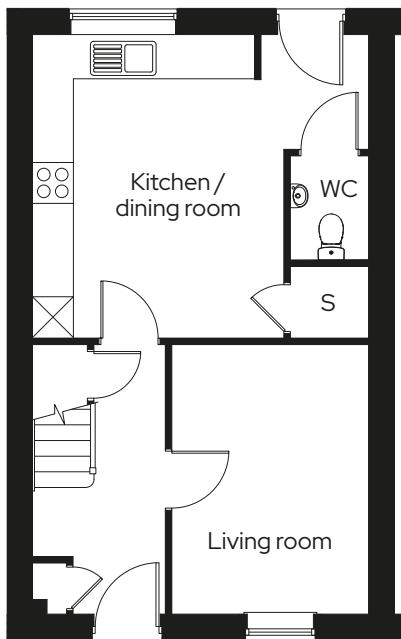
# The Witcombe

3 Bedroom terraced  
Plot 36\*, 37

3  1  2 

## Room

Kitchen/dining room	5.0m x 4.5m
Living room	2.9m x 4.0m
Master bedroom	2.7m x 4.2m
Bedroom 2	2.7m x 4.3m
Bedroom 3	2.2m x 2.9m



\* Mirrored plot S Storage

We operate a policy of continuous product development and individual features such as windows and elevational treatments may vary. Consequently, particulars contained within this document should be treated as general guidance only. They do not constitute a contract, part of a contract or a warranty. Computer generated images and photographs are for illustration purposes only and may not accurately depict individual plots. Dimensions provided are for general guidance and are not intended to be used for carpet sizes, appliances, spaces or items of furniture.



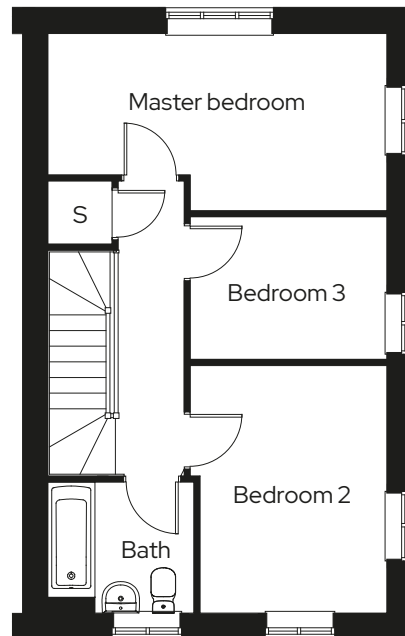
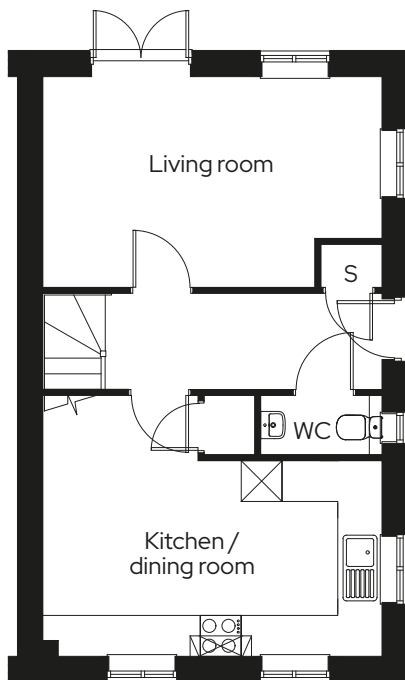
# The Cooper

3 Bedroom end terraced  
Plot 38

3  1  2 

**Room**

Kitchen/dining room	5.0m x 3.9m
Living room	5.0m x 3.1m
Master bedroom	5.0m x 2.6m
Bedroom 2	2.8m x 3.7m
Bedroom 3	2.8m x 2.1m



\* Mirrored plot S Storage

We operate a policy of continuous product development and individual features such as windows and elevational treatments may vary. Consequently, particulars contained within this document should be treated as general guidance only. They do not constitute a contract, part of a contract or a warranty. Computer generated images and photographs are for illustration purposes only and may not accurately depict individual plots. Dimensions provided are for general guidance and are not intended to be used for carpet sizes, appliances, spaces or items of furniture.

As one of the UK's leading shared ownership providers, Sovereign is passionate about giving everyone the opportunity to own their own home.

Our highly dedicated sales team has already helped thousands of people step onto the property ladder and our profit with a purpose principle means we can continue to help thousands more. Established, experienced, and affordable, we are proud to help more people live where they love.

## Get in touch

### 0300 330 0718

To find out more about shared ownership and the homes we offer, get in touch today.

→ [sovereignliving.org.uk](https://sovereignliving.org.uk)

### Head office

Sovereign House  
Basing View  
Basingstoke  
RG21 4FA