



Hayne Farm

A collection of 2 bedroom apartments

Enjoy beautiful countryside on your doorstep

A selection of 2 bedroom homes situated at the Hayne Farm development in Gittisham close to the town of Honiton, Devon.

These stylish properties come complete with a modern fitted kitchen with a built-in oven, hob and extractor and an open-plan kitchen/living/dining area along with a stylish family bathroom suite. Each property also comes with allocated parking.



-  **Apartment block**
-  **B Bin store**
-  **Parking spaces**
-  **C Cycle store**

 **Hayne Farm,**
Longlands Way,
Gittisham,
Honiton,
EX14 3FX



Please note, pets are not allowed in the apartments.





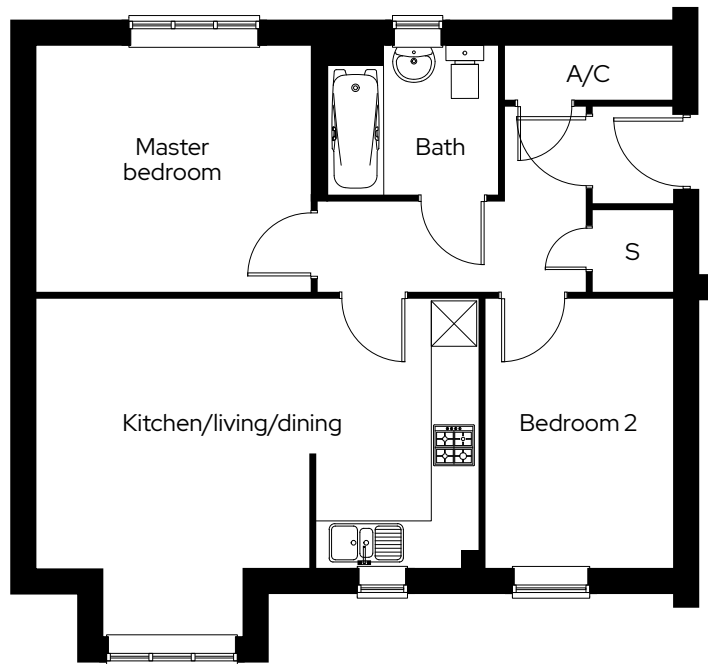
The Yew

2 bedroom apartment
Plot 153, 155*, 156, 158*

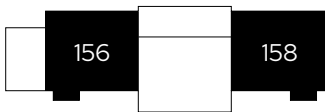
2 1 1

Room

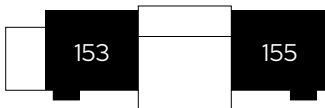
Kitchen/living/dining	5.9m x 4.5m
Master bedroom	3.7m x 3.2m
Bedroom 2	2.5m x 3.6m



First Floor



Ground Floor



* Mirrored plot A/C Airing cupboard S Storage

We operate a policy of continuous product development and individual features such as windows and elevational treatments may vary. Consequently, particulars contained within this document should be treated as general guidance only. They do not constitute a contract, part of a contract or a warranty. Computer generated images and photographs are for illustration purposes only and may not accurately depict individual plots. Dimensions provided are for general guidance and are not intended to be used for carpet sizes, appliances, spaces or items of furniture. All dimensions are maximum.

The Oak

2 bedroom ground floor apartment
Plot 154

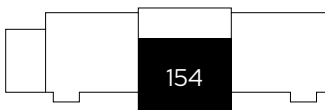
2 1 1

Room

Kitchen/living/dining	3.1m x 6.6m
Master bedroom	2.8m x 4.3m
Bedroom 2	2.3m x 3.4m



Ground Floor





A/C Airing cupboard B Boiler S Storage

We operate a policy of continuous product development and individual features such as windows and elevational treatments may vary. Consequently, particulars contained within this document should be treated as general guidance only. They do not constitute a contract, part of a contract or a warranty. Computer generated images and photographs are for illustration purposes only and may not accurately depict individual plots. Dimensions provided are for general guidance and are not intended to be used for carpet sizes, appliances, spaces or items of furniture. All dimensions are maximum.

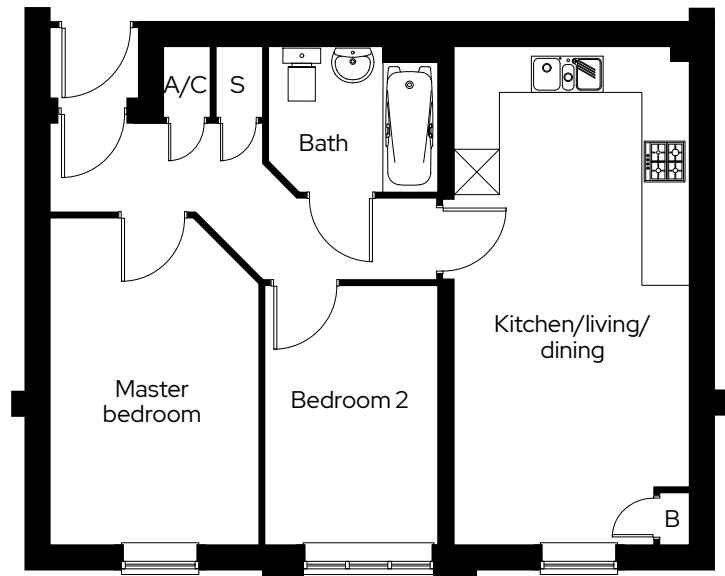
The Cypress

2 bedroom first floor apartment
Plot 157

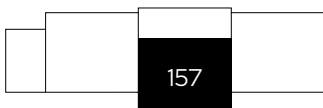
2  1  1 

Room

Kitchen/living/dining	3.1m x 6.6m
Master bedroom	2.8m x 4.3m
Bedroom 2	2.3m x 3.4m



First Floor



A/C Airing cupboard B Boiler S Storage

We operate a policy of continuous product development and individual features such as windows and elevational treatments may vary. Consequently, particulars contained within this document should be treated as general guidance only. They do not constitute a contract, part of a contract or a warranty. Computer generated images and photographs are for illustration purposes only and may not accurately depict individual plots. Dimensions provided are for general guidance and are not intended to be used for carpet sizes, appliances, spaces or items of furniture. All dimensions are maximum.

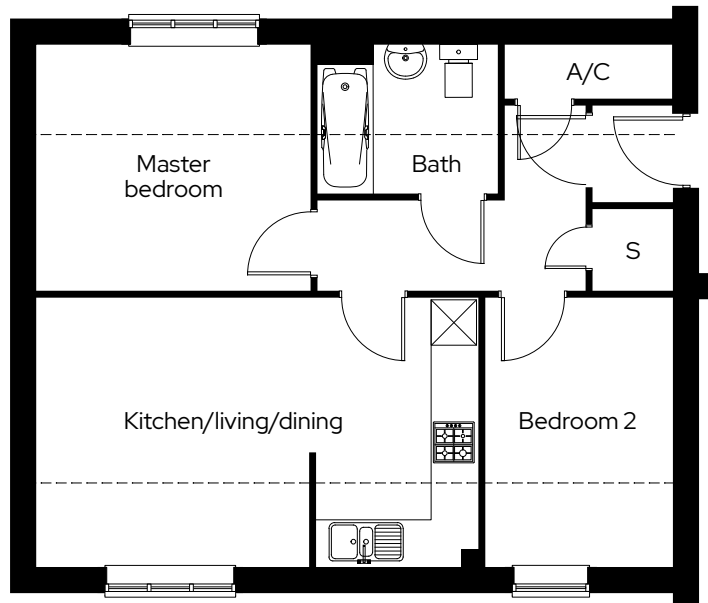
The Elm

2 bedroom second floor apartment
Plot 159, 161*

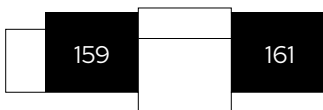
2 1 1

Room

Kitchen/living/dining	5.9m x 3.6m
Master bedroom	3.7m x 3.2m
Bedroom 2	2.5m x 3.6m



Second Floor






* Mirrored plot A/C Airing cupboard --- Sloping ceiling S Storage

We operate a policy of continuous product development and individual features such as windows and elevational treatments may vary. Consequently, particulars contained within this document should be treated as general guidance only. They do not constitute a contract, part of a contract or a warranty. Computer generated images and photographs are for illustration purposes only and may not accurately depict individual plots. Dimensions provided are for general guidance and are not intended to be used for carpet sizes, appliances, spaces or items of furniture. All dimensions are maximum.

The Chestnut

2 bedroom second floor apartment
Plot 160

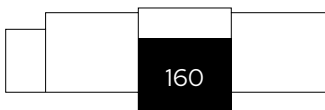
2  1  2 

Room

Kitchen/living/dining	3.2m x 6.6m
Master bedroom	2.8m x 4.3m
Bedroom 2	2.3m x 3.4m



Second Floor



A/C Airing cupboard B Boiler S Storage

We operate a policy of continuous product development and individual features such as windows and elevational treatments may vary. Consequently, particulars contained within this document should be treated as general guidance only. They do not constitute a contract, part of a contract or a warranty. Computer generated images and photographs are for illustration purposes only and may not accurately depict individual plots. Dimensions provided are for general guidance and are not intended to be used for carpet sizes, appliances, spaces or items of furniture. All dimensions are maximum.

Get in touch

0300 330 0718

To find out more about shared ownership and the homes we offer, get in touch today.

→ sovereignliving.org.uk

Head office

Sovereign House
Basing View
Basingstoke
RG21 4FA

As one of the UK's leading shared ownership providers, Sovereign is passionate about giving everyone the opportunity to own their own home.

Our highly dedicated sales team has already helped thousands of people step onto the property ladder and our profit with a purpose principle means we can continue to help thousands more. Established, experienced, and affordable, we are proud to help more people live where they love.