



Blackberry Park



A stylish collection of 2 bed homes


Balance without compromise

A small collection of stylish 2 bedroom homes available with shared ownership are coming soon to the Blackberry Park development.

Located in the village of Coalpit Heath, these new homes each come complete with a modern fitted kitchen with a built-in oven, hob and extractor, stylish open plan kitchen/living/dining and a downstairs cloakroom. Also benefitting from two spacious bedrooms, bathroom suite with bath, private enclosed garden laid to lawn and two allocated parking spaces.



-  **The Heather**
-  **Parking spaces**




 **Blackberry Park,**
Cow Leaze,
Coalpit Heath, Bristol,
South Gloucestershire,
BS36 2WB





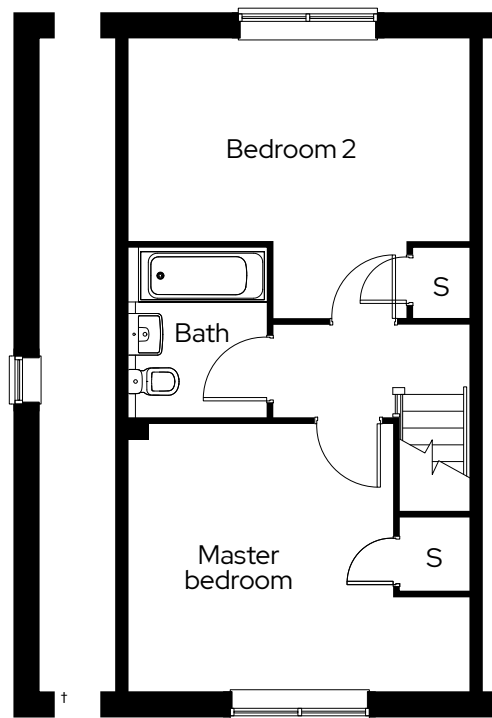
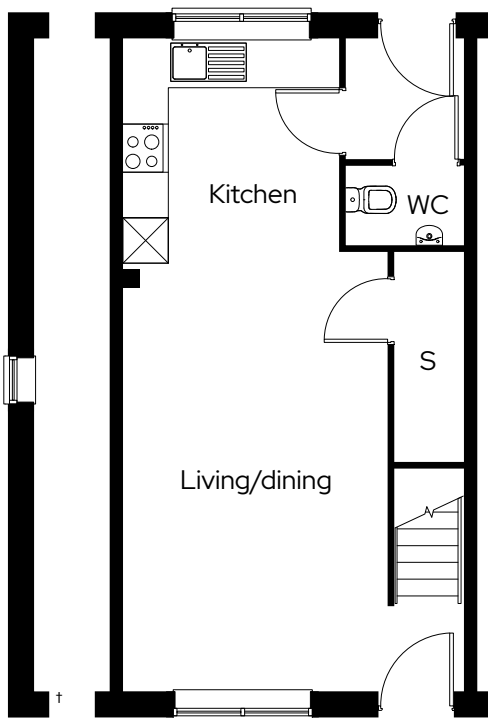
The Heather

2 bed mid and end terraced
Plot 57, 58, 59*

2  1  2 

Room

Kitchen/living/dining	4.5m x 8.7m
Master bedroom	4.5m x 3.6m
Bedroom 2	4.5m x 2.7m



† Side of plot 59 * Mirrored plot S Storage

Get in touch

0300 330 0718

To find out more about shared ownership and the homes we offer, get in touch today.

→ sovereignliving.org.uk

Head office

Sovereign House
Basing View
Basingstoke
RG21 4FA

As one of the UK's leading shared ownership providers, Sovereign is passionate about giving everyone the opportunity to own their own home.

Our highly dedicated sales team has already helped thousands of people step onto the property ladder and our profit with a purpose principle means we can continue to help thousands more. Established, experienced, and affordable, we are proud to help more people live where they love.