



The Carriageworks

A stunning collection of 1 & 2 bedroom apartments


Say hello to city living

An exciting new development located in the vibrant neighbourhood of Stokes Croft, Bristol.

These stylish apartments feature a modern fitted kitchen with a built-in oven, hob, extractor and fridge/freezer. Also benefitting from carpets and flooring throughout, open-plan living, a stylish bathroom suite and communal bike store. All plots benefit from a washing machine and select plots also benefit from an en-suite and dishwasher.



 Apartment block

 **The Carriageworks,**
Bradley House,
Carmen Beckford Street,
Bristol,
BS13FG

North





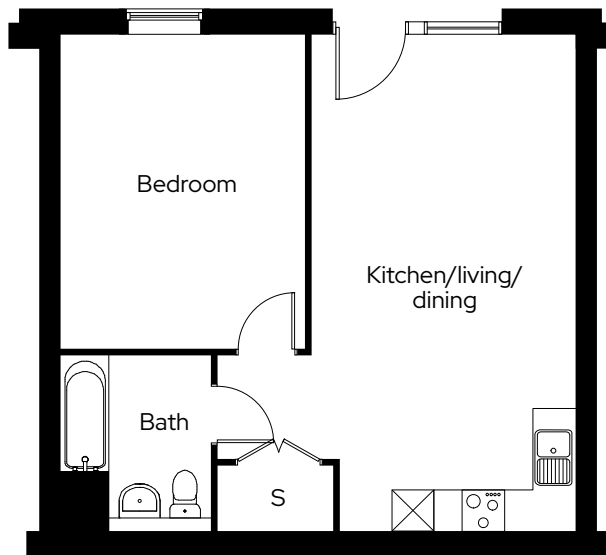
Type 1

1 bedroom ground floor apartment
Plot D0-01

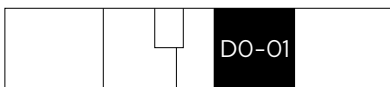
1  1 

Room

Kitchen/living/dining	3.9m x 7.3m
Bedroom	3.6m x 4.6m





Ground Floor



S Storage

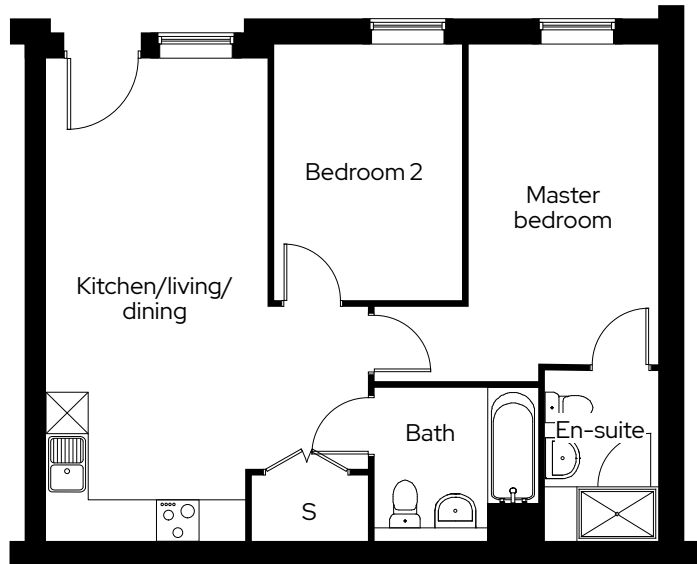
Type 2

2 bedroom ground floor apartment
Plot D0-02

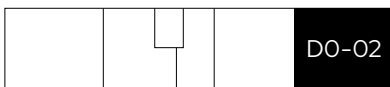
2  2 

Room

Kitchen/living/dining	3.3m x 7.2m
Master bedroom	2.7m x 4.7m
Bedroom 2	2.9m x 3.7m





Ground Floor



S Storage

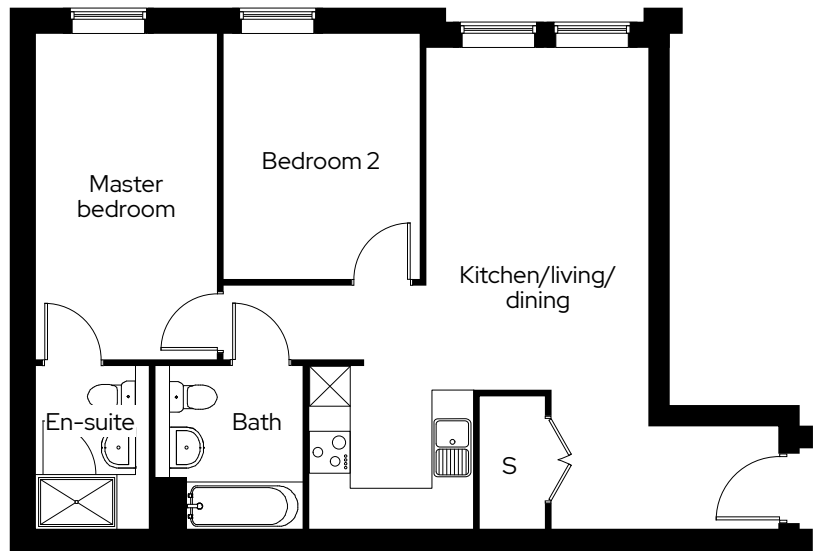
Type 3

2 bedroom first floor apartment
Plot D1-01

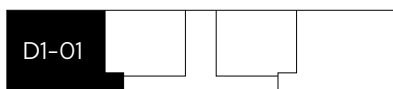
2  2 

Room

Kitchen area	2.4m x 2.4m
Living/dining area	3.2m x 3.5m
Master bedroom	2.7m x 4.8m
Bedroom 2	3.0m x 3.6m



First Floor



S Storage

We operate a policy of continuous product development and individual features such as windows and elevational treatments may vary. Consequently, particulars contained within this document should be treated as general guidance only. They do not constitute a contract, part of a contract or a warranty. Computer generated images and photographs are for illustration purposes only and may not accurately depict individual plots. Dimensions provided are for general guidance and are not intended to be used for carpet sizes, appliances, spaces or items of furniture. All dimensions are maximum.

Type 4

1 bedroom first and second floor apartment
Plot D1-02, D2-02

1  1 

Room

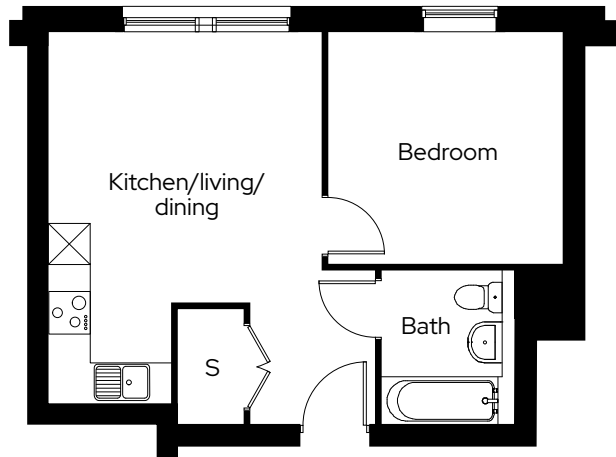
Kitchen/living/dining	4.0m x 5.0m
Bedroom	3.4m x 3.4m



Second Floor



First Floor



S Storage

Type 5

1 bedroom first and second floor apartment
Plot D1-03, D2-03

1  1 

Room

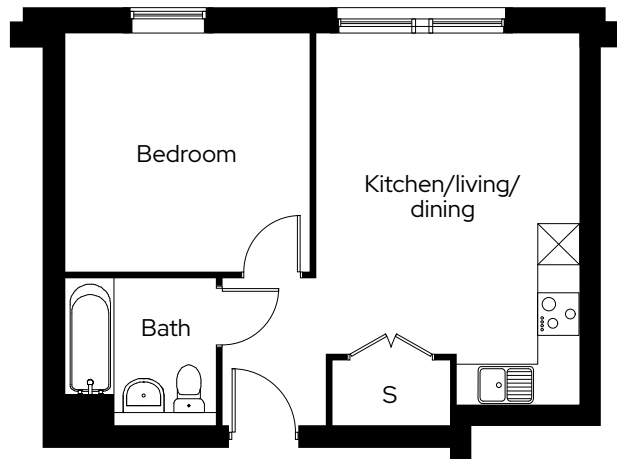
Kitchen/living/dining	3.9m x 5.6m
Bedroom	3.6m x 3.5m



Second Floor





First Floor



S Storage

Type 6

2 bedroom first and second floor apartment
Plot D1-04, D2-04

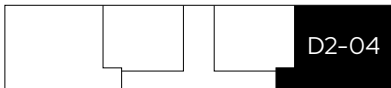
2  2 

Room

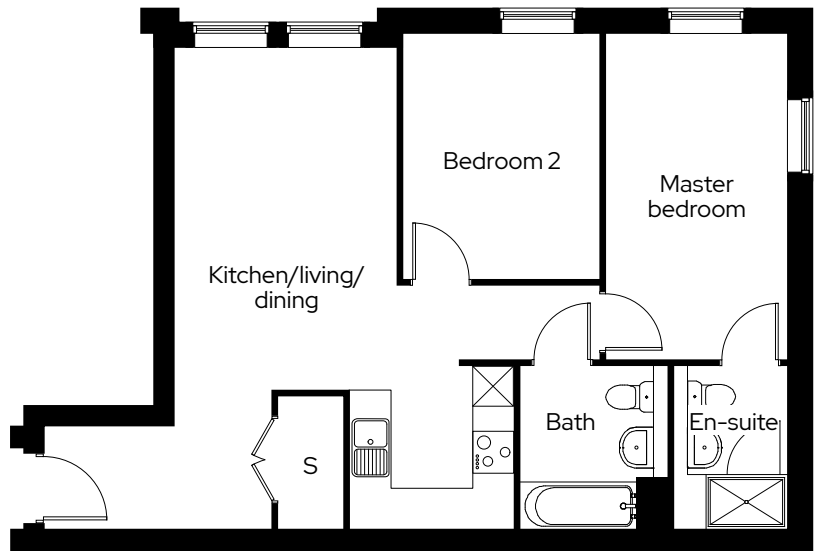
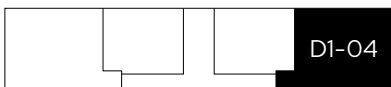
Kitchen area	2.4m x 2.4m
Living/dining area	3.2m x 3.7m
Master bedroom	2.7m x 4.8m
Bedroom 2	3.0m x 3.6m



Second Floor





First Floor



S Storage

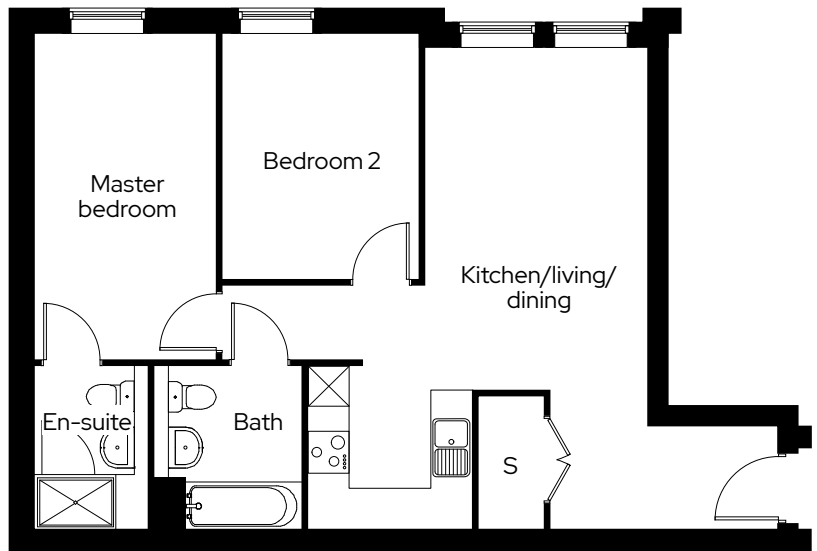
Type 7

2 bedroom second floor apartment
Plot D2-01

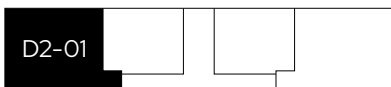
2  2 

Room

Kitchen area	2.4m x 2.4m
Living/dining area	3.2m x 3.7m
Master bedroom	2.7m x 4.8m
Bedroom 2	3.0m x 3.6m



Second Floor



S Storage

Get in touch

0300 330 0718

To find out more about shared ownership and the homes we offer, get in touch today.

→ sovereignliving.org.uk

Head office

Sovereign House
Basing View
Basingstoke
RG21 4FA

As one of the UK's leading shared ownership providers, Sovereign is passionate about giving everyone the opportunity to own their own home.

Our highly dedicated sales team has already helped thousands of people step onto the property ladder and our profit with a purpose principle means we can continue to help thousands more. Established, experienced, and affordable, we are proud to help more people live where they love.